

Old Highway 14 & I-90 Exit 10 Safety Improvements

Understanding the Reduced Conflict Intersection (RCI)

Project Overview

SDDOT is planning safety improvements at Old Highway 14 and North Avenue, near I-90 Exit 10. A 2024 traffic study identified safety concerns related to turning movements and closely spaced intersections.

Based on the study, a **Reduced Conflict Intersection (RCI)** was selected to improve safety.

Study Area

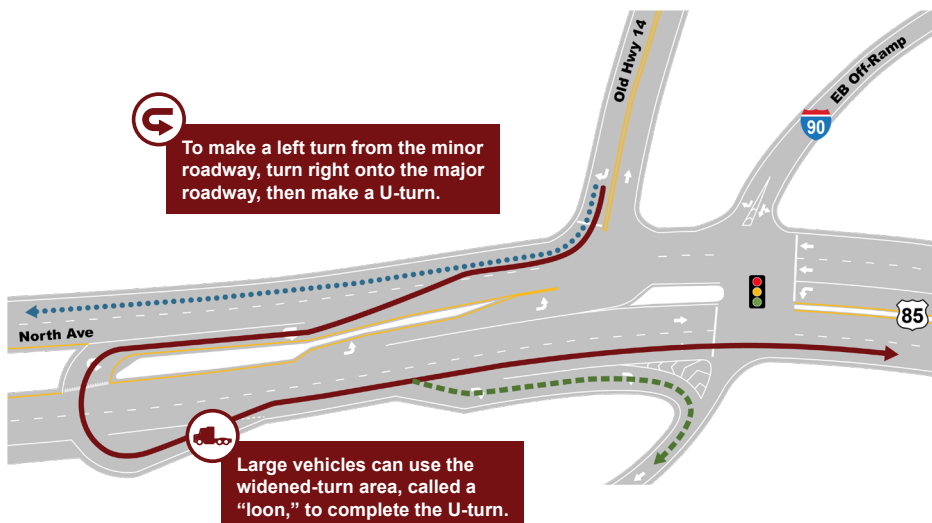


What Is a Reduced Conflict Intersection (RCI)?

A Reduced Conflict Intersection, or RCI, is an intersection design that improves safety by **reducing the number of places where vehicles cross paths.**

RCIs:

- Reduce the most serious crash types
- Limit the need to cross multiple lanes at once
- Allow left turns to be completed in safer, simpler steps
- Are used successfully in many states

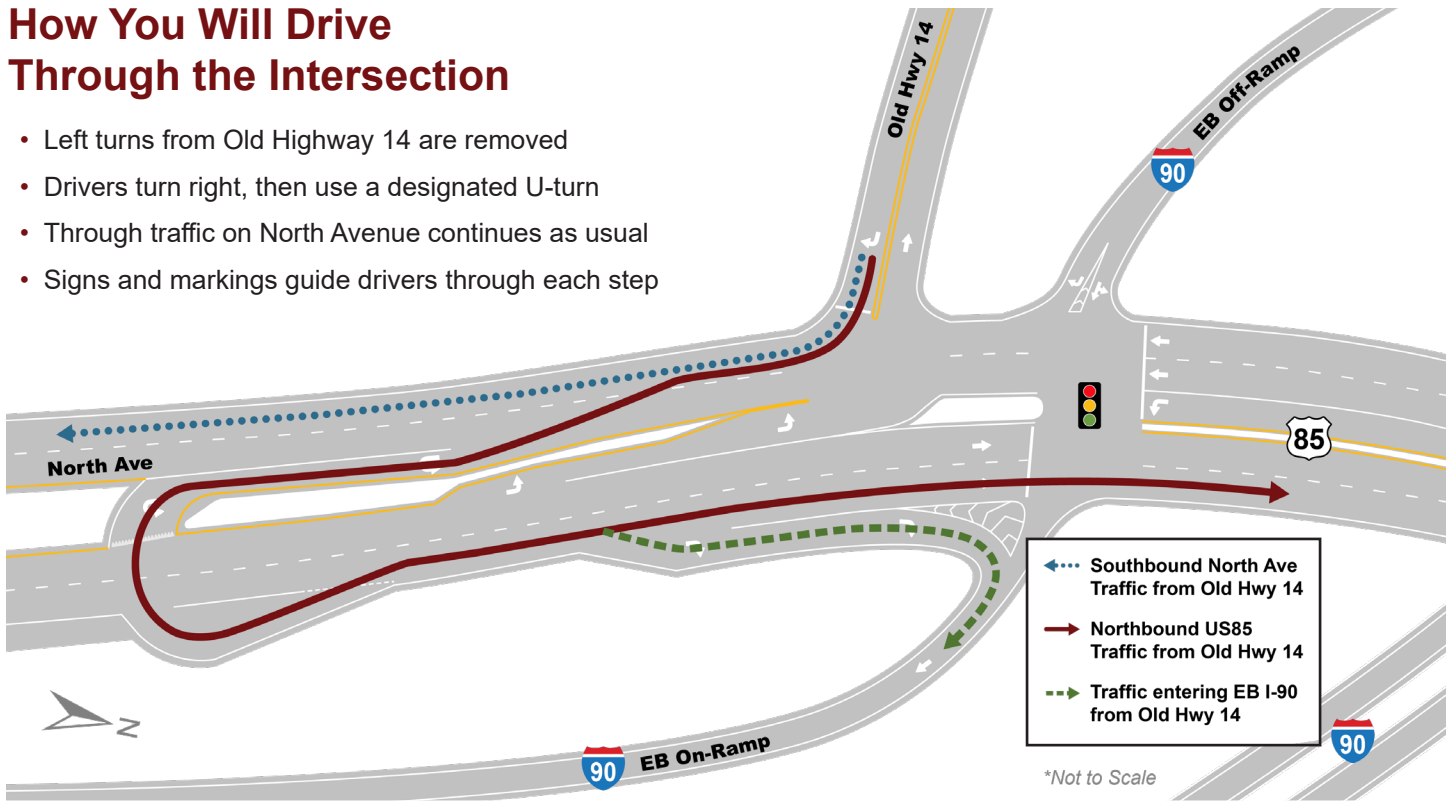


Why Improvements Are Needed

- Crashes often involved turning movements
- Close spacing near I-90 creates driver challenges
- Certain movements have higher crash risk

How You Will Drive Through the Intersection

- Left turns from Old Highway 14 are removed
- Drivers turn right, then use a designated U-turn
- Through traffic on North Avenue continues as usual
- Signs and markings guide drivers through each step



The recommended solution also includes:

- Signalizing the I-90 eastbound on- and off-ramp intersection
- Adding a northbound right-turn lane

Benefits of the RCI

- ⊕ Fewer places for serious crashes
- ⊕ Safer, clearer turning movements
- ⊕ Easier for drivers to know where to look
- ⊕ More predictable traffic flow
- ⊕ Simplify decision-making
- ⊕ Manages peak travel time congestion
- ⊕ Performs better over time

Construction & Traffic

- Construction will occur in stages
- Traffic will be maintained with lane shifts
- Left turns from Old Highway 14 will be restricted during construction
- All I-90 eastbound ramp movements will remain available
- Advance notice will be provided

Project Contact

Mike Carlson
 Rapid City Area Engineer
 (605) 394-2244 | Mike.Carlson@state.sd.us



Visit the project website at:
<https://dot.sd.gov/i-90exit10>

