

PUBLIC MEETING

Project Location: S.D. Highway 19 from the east S.D. Highway 42 Junction to the west S.D. Highway 38 Junction
Project Number: P-PH 0019(48)65 PCN 069K
Date: Tuesday, May 13, 2025, 5:30 p.m.
Cary Cleland
Road Design Engineering Supervisor

1

MISSION

To efficiently provide a safe and effective public transportation system.

<https://dot.sd.gov/>

2

PURPOSE OF THE MEETING

Involve the public in the planning and design process


Provide a project overview

Gather input and comments

✓ Background information
✓ Proposed project
✓ Project schedule

3

PROJECT LIMITS



4

BACKGROUND INFORMATION

Grading in 1952

Resurfaced in 1975, 1987 & 2010

Asphalt Concrete Patch Work for Maintenance

5

TRAFFIC

2024 Average Daily Traffic (ADT): 929

2049 Projected ADT: 1567

18.4% Average Truck Traffic

6

CRASH HISTORY

16 Reported crashes

(Five-year period from 2019-2023)

- Eleven (11) animal hit
- Three (2) fixed object off road
- One (1) overturn
- One (2) other
- Zero (0) fatalities

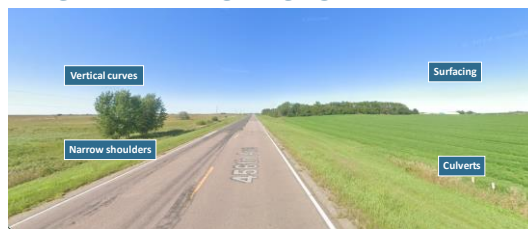
Rural principal arterial

- Reported crash rate = 1.66
- Statewide weighted crash rate = 1.56 (crashes per million vehicle miles of travel)

SD DOT

7

HIGHWAY DEFICIENCIES



SD DOT

8

PROPOSED IMPROVEMENTS

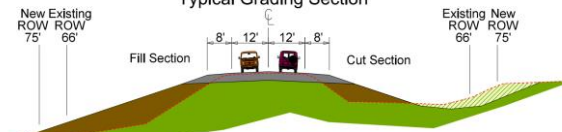


SD DOT

9

PROPOSED TYPICAL SECTION

South Dakota Highway 19 Typical Grading Section



SD DOT

10

ACCESS MANAGEMENT

Provide safe, efficient access to streets and highways by limiting the number of direct accesses to major roadways.

✓ See handout

SD DOT

11

RIGHT OF WAY (ROW)

Existing width = 132 feet

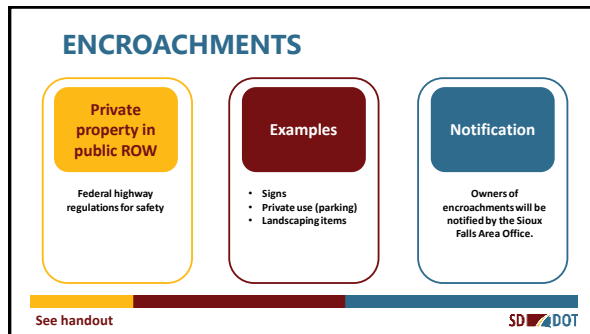
Purchase additional ROW for 9' each side of roadway (18' Total)

Temporary easements as needed

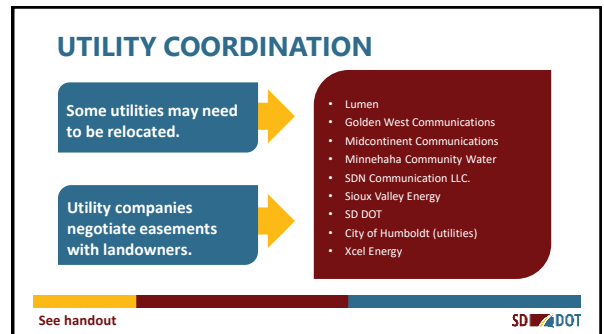
See handout

SD DOT

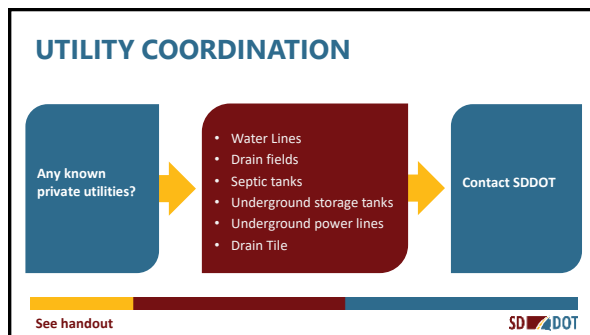
12



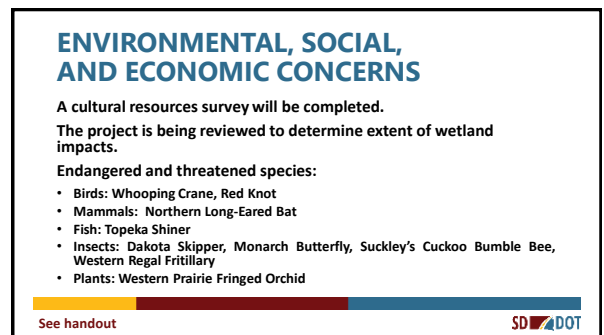
13



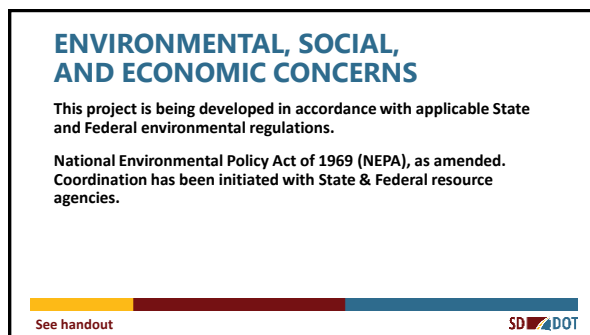
14



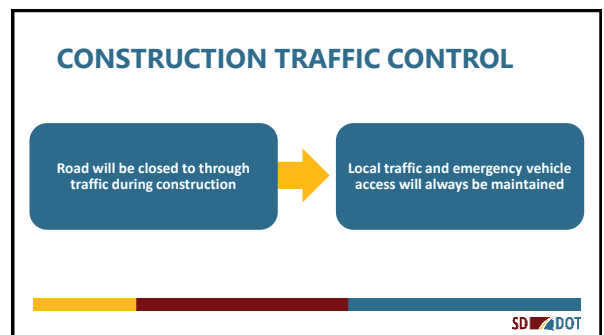
15



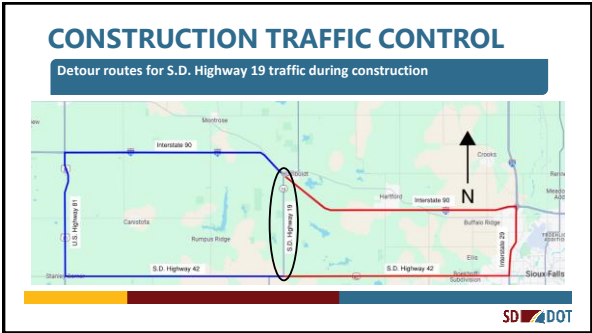
16



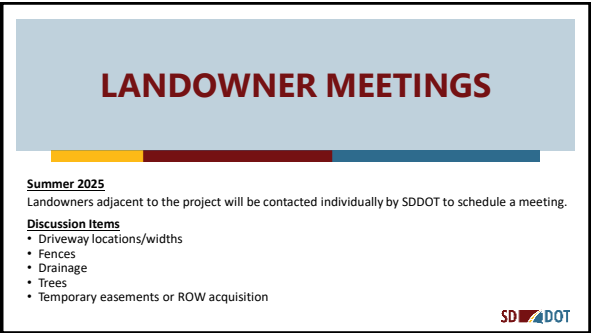
17



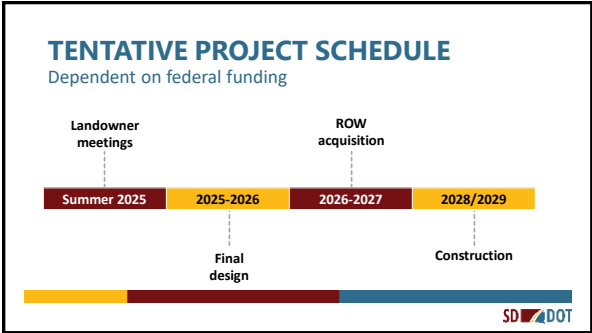
18



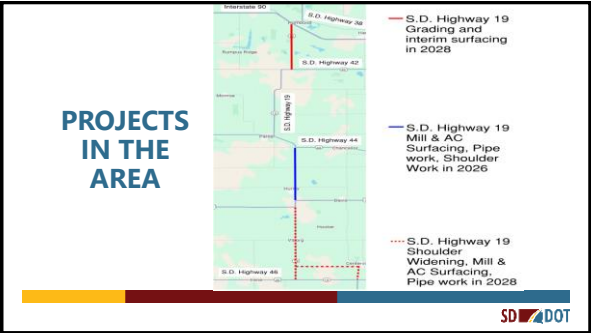
19



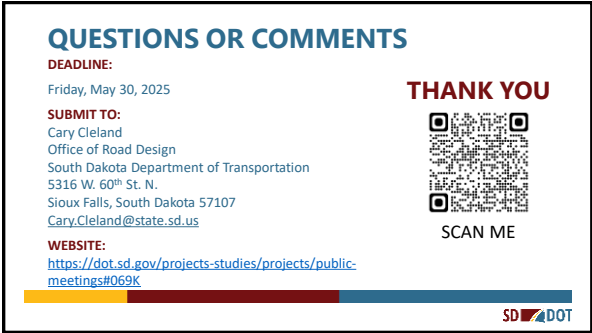
20



21



22



23