



DEPARTMENT OF  
TRANSPORTATION

# PUBLIC MEETING

**Project Location:** U.S. Highway 85 from Lead to Pluma

**Project Number:** NH 0085(107)25, PCN 0786

**Date:** Thursday, April 24, 2025, 5:30 p.m.

Mark Malone

Road Design Engineering Manager

# MISSION

To efficiently provide a safe and effective public transportation system.

<https://dot.sd.gov/>

# PURPOSE OF THE MEETING

Involve the public in the planning and design process

Provide a project overview

Gather input and comments

- ✓ Background information
- ✓ Proposed project
- ✓ Project schedule

# PROJECT LIMITS



# BACKGROUND INFORMATION

Reconstructed Through the Narrow Gulch in 1929

Reconstructed West of the Narrow Gulch in 2000

Reconstructed East of the Narrow Gulch in 2002

Last Surface Improvements in 2013

# TRAFFIC

**2023 Average daily traffic (ADT): 4,074**

**2048 Projected ADT: 6,359**

**1.7% Average truck traffic**

# CRASH HISTORY

## 13 Reported crashes

(Five-year period from 2019-2023)

- One (1) intersection crash
- Five (5) fixed object off road crashes
- One (1) overturn on road crash
- One (1) overturn off road crash
- Two (2) angle-no intersection crashes
- One (1) animal crash
- Two (2) other crashes
- Zero (0) fatalities

## Urban principal arterial

- Reported crash rate = 3.27
- Statewide weighted crash rate = 1.99 (crashes per million vehicle miles of travel)



# WHY WE ARE RECONSTRUCTING

Pavement condition

Lack of pedestrian facilities

Improve safety

Drainage





# PROPOSED IMPROVEMENTS

New concrete surfacing

Sidewalk along curb & gutter

New drainage pipes

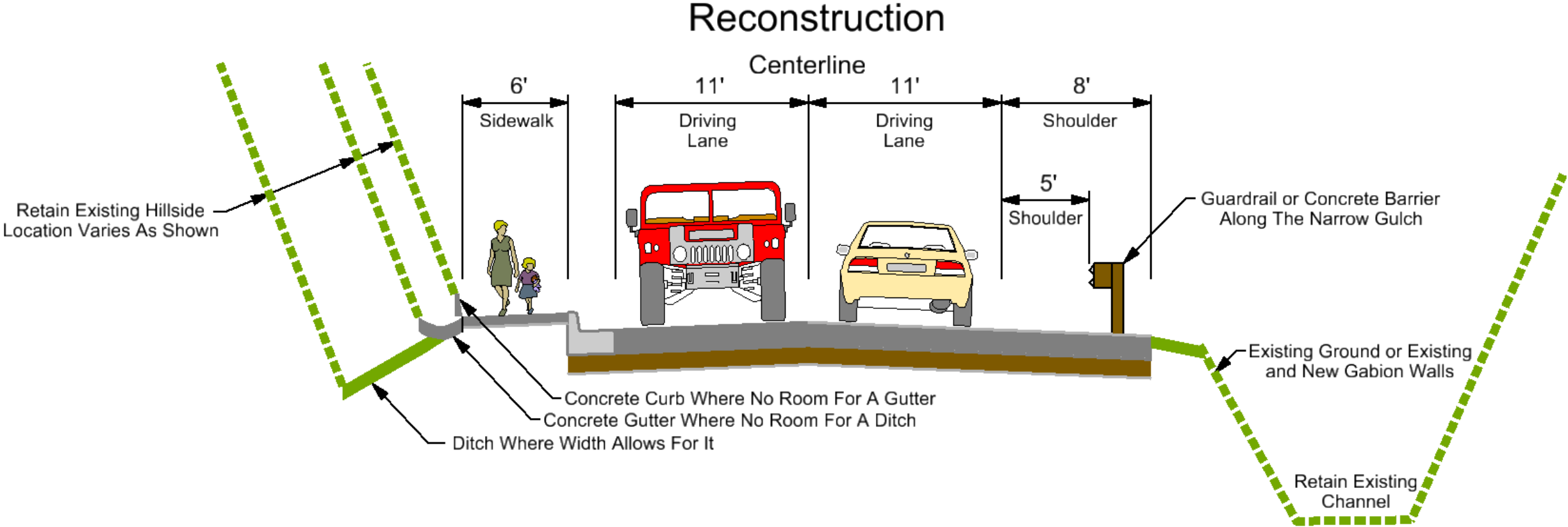
Repair Channel Walls

Roadway lighting

Avoid Hillside and Channel

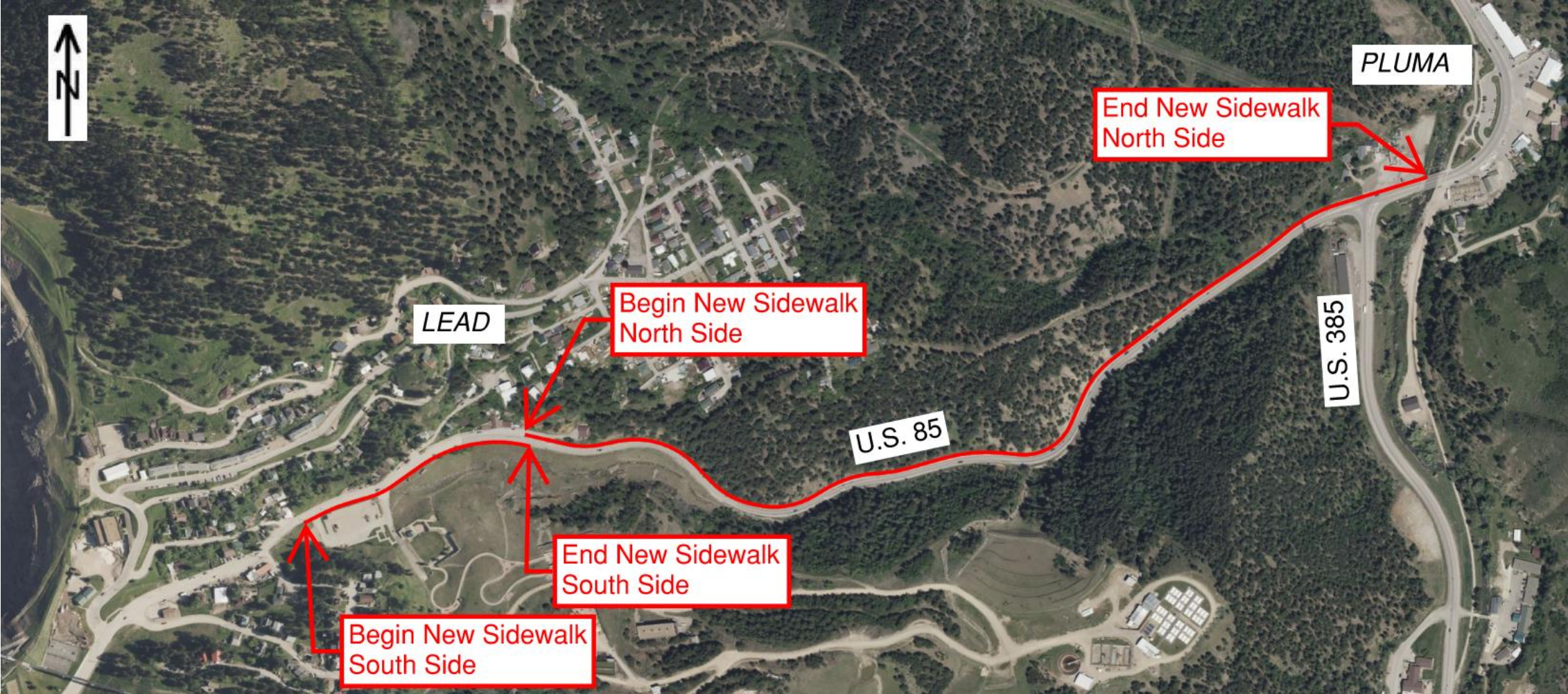


# PROPOSED TYPICAL SECTION





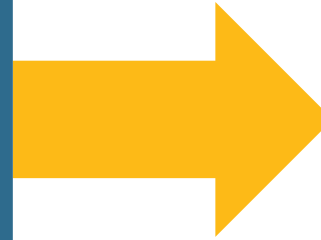
# PROPOSED PEDESTRIAN FACILITIES





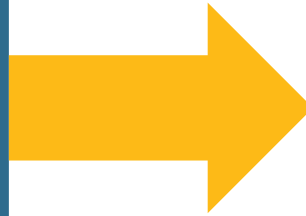
# DRAINAGE PIPES

Replace Pipes  
and  
Box Culvert



# RETAINING WALLS

- Add New Walls
- Replace, Extend & Repair Existing Walls

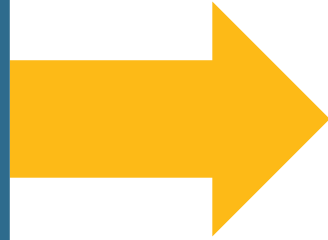




# ROADWAY LIGHTING

Replace  
existing  
lighting:

- LED



# ACCESS MANAGEMENT

**Manage location and number of access points.**  
Provide safe, efficient access to streets and highways by relocating, combining, and eliminating access points.

✓ **See handout**

# RIGHT OF WAY (ROW)

Existing Width varies 35-480 feet

Purchase additional ROW as needed

Temporary easements as needed

# ENCROACHMENTS

## Private property in public ROW

Federal highway regulations for safety

## Examples

- Signs
- Private use (parking)
- Landscaping

## Notification

Owners of encroachments will be notified by the Rapid City Area Office.

# UTILITY COORDINATION

Some utilities may need to be relocated.

Utility companies negotiate easements with landowners.

- Lead-Deadwood Sanitary District
- City of Lead
- City of Deadwood
- Black Hills Energy
- Blue Peak Communications
- Lumen Technologies
- Midcontinent Communications
- Montana-Dakota Utilities
- SDN Communications (Future)



# UTILITY COORDINATION

Any known  
private utilities?

- Water Lines
- Drain fields
- Septic tanks
- Underground storage tanks
- Underground power lines

Contact SDDOT

See handout

# ENVIRONMENTAL, SOCIAL, AND ECONOMIC CONCERNS

**This project is being developed in accordance with applicable State and Federal environmental regulations.**

- **National Environmental Policy Act of 1969 (NEPA), as amended.**
- **Section 106 of the National Historic Preservation Act requires Federal actions to take into account the effects of project undertakings on historic properties.**

Public is invited to provide information on any culturally or archaeologically known site(s).

# ENVIRONMENTAL, SOCIAL, AND ECONOMIC CONCERNS

- **Section 404 of the Clean Water Act**

Wetlands: Federal regulations require that unavoidable wetland impacts caused by highway construction be mitigated. If you are interested in creating or restoring wetlands on your property, please complete the Wetland Mitigation Registry Form in the handouts.

- **Section 4(f) of the USDOT Transportation Act of 1966**

Project action will include all possible planning to avoid and minimize harm to publicly owned parks, recreational areas, wildlife & waterfowl refuges, or public & private historical sites. An evaluation of possible project effects on Lead Historic District is being done with the project.

# ENVIRONMENTAL, SOCIAL, AND ECONOMIC CONCERNS

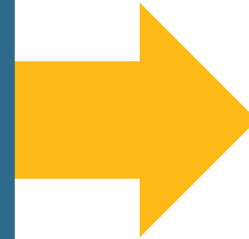
- **Section 7 of the Endangered Species Act**

Efforts are proceeding to ensure this project will not adversely affect listed species in Lawrence County:

- Birds: Rufa Red Knot
- Mammals: Northern Long-Eared Bat, Tricolored Bat
- Insects: Monarch Butterfly, Western Regal Fritillary

# CONSTRUCTION TRAFFIC CONTROL

**Closed to traffic**



**One Construction Season**

Early Spring until the Sturgis Rally



# CONSTRUCTION TRAFFIC CONTROL

Detour route for  
U.S. Highway 85  
traffic during  
construction



# LANDOWNER MEETINGS

## Summer 2025

Landowners adjacent to the project will be contacted individually by SDDOT to schedule a meeting.

## Discussion Items

- Driveway locations/widths
- Sidewalk and curb ramps
- Fences
- Drainage
- Trees
- Temporary easements or ROW acquisition

**See handout**

# TENTATIVE PROJECT SCHEDULE

Dependent on federal funding

Estimated cost: \$5.9 million



# QUESTIONS OR COMMENTS

## DEADLINE:

Monday, May 12, 2025

## SUBMIT TO:

Mark Malone

Office of Road Design

South Dakota Department of Transportation

700 E. Broadway Ave.

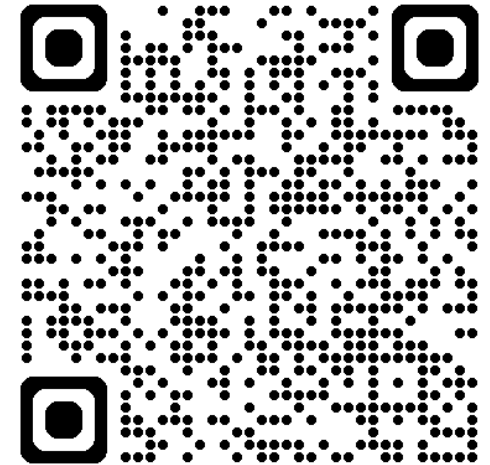
Pierre, South Dakota 57501

[Mark.Malone@state.sd.us](mailto:Mark.Malone@state.sd.us)

## WEBSITE:

[https://dot.sd.gov/projects-studies/projects/public-meetings#listItemLink\\_2080](https://dot.sd.gov/projects-studies/projects/public-meetings#listItemLink_2080)

# THANK YOU



SCAN ME