



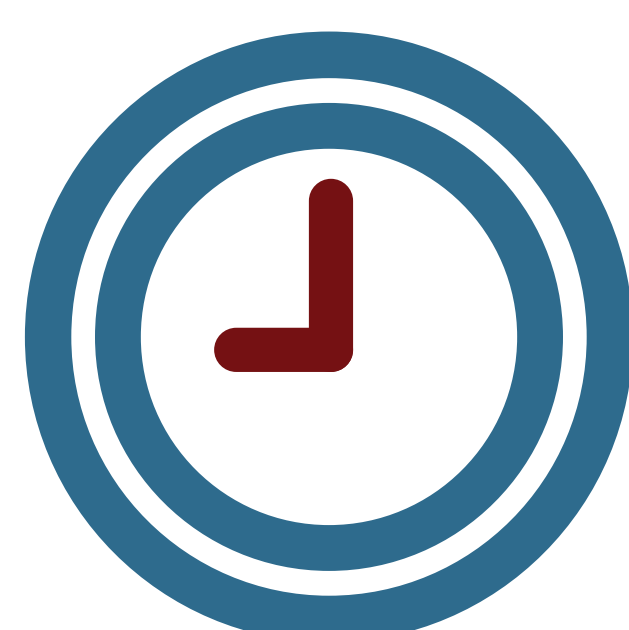
WELCOME!

We are pleased you are here to learn more about and provide feedback on the SDDOT U.S. Highway 81 proposed reconstruction project from S.D. Highway 34 to north of NW 9th Street in Madison.

How to Get the Most Out of This Meeting:



Review each display and talk with project team members to learn more and share your ideas.



Spend as much or as little time with us as you like.



Complete a comment form and drop it in the box.

Project Overview

The U.S. Highway 81 Corridor:

- Serves as a key north-south route through Madison
- Carries over 3,000 vehicles per day
- Provides access to homes, businesses, and schools

The proposed project will:

- Replace aging pavement
- Enhance safety
- Add pedestrian facilities
- Address drainage and utility needs

Construction is anticipated to begin in 2029.



What challenges does this corridor face today?

- Deteriorating pavement that causes rough rides and frequent maintenance
- Missing sidewalks that limit safe pedestrian travel
- Multiple driveways and no center turn lane that cause turning conflicts
- Crash patterns that show turning-related safety concerns



The pavement along the corridor is worn and continuing to deteriorate.



The current two-lane highway does not accommodate safe turning movements and lacks pedestrian accommodations.

Existing Vs. Proposed Layout



Two-Lane to Three-Lane Configuration with Sidewalks



Existing (2-Lane Undivided)

- One travel lane in each direction
- No dedicated turn lane for vehicles turning left
- Limited or missing sidewalks along the corridor
- Open drainage with limited storm sewer



Proposed (3-Lane with Center Turn Lane and Sidewalks)

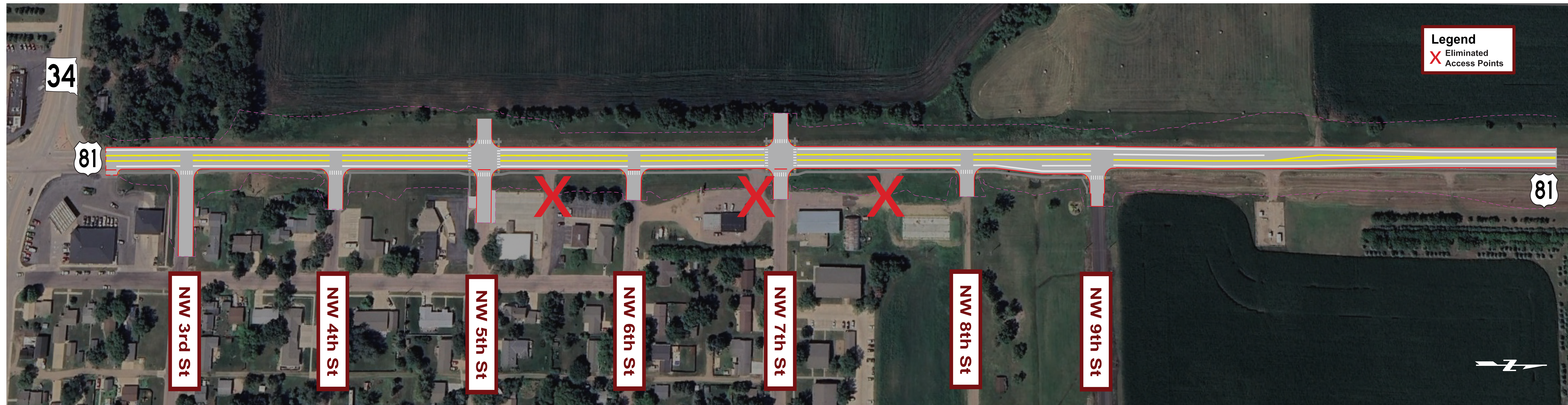
- Two travel lanes with continuous center turn lane to improve safety and traffic flow
- Sidewalks on the east side of the roadway for pedestrian safety and connectivity
- Curb and gutter with storm sewer for improved drainage
- Supports current and future traffic needs while enhancing safety for all users

Corridor Wide Improvements

The new U.S. Highway 81 Corridor was designed to meet the needs of a growing community.

The project will also:

- Rebuild U.S. Highway 81 with three lanes and a center turn lane for safer turns and smoother traffic flow
- Add sidewalks on the east side for pedestrians
- Upgrade storm sewer for better drainage
- Install LED lighting for visibility and safety
- Adjust driveways to improve safety while maintaining access
- Replace water and sewer lines in coordination with the City of Madison

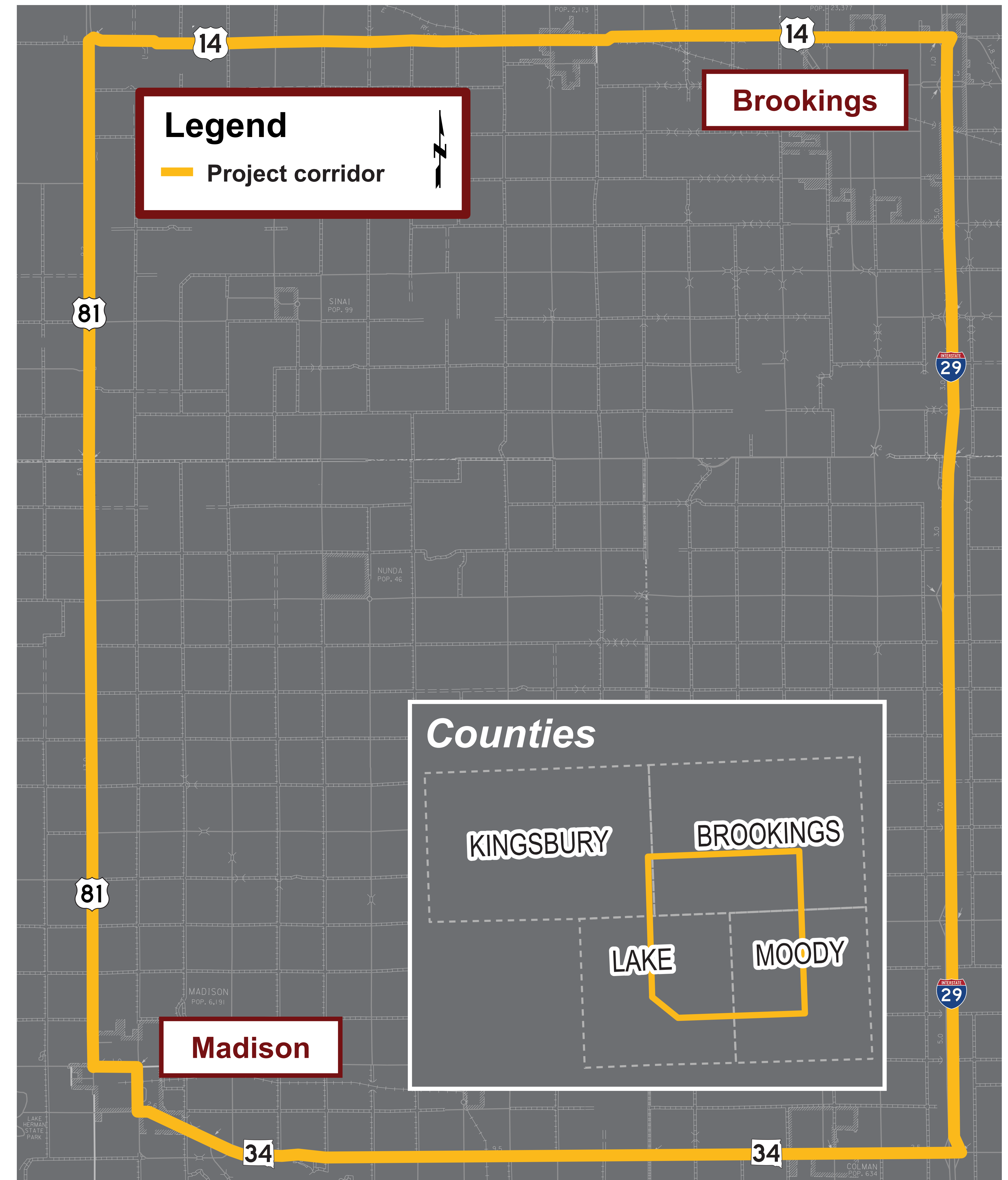


Traffic During Construction

Reconstructing U.S. Highway 81 will take time and will require changes to how people travel through Madison during construction.

During construction:

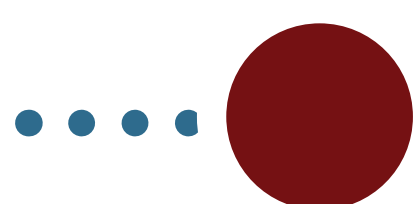
- Through traffic on U.S. Highway 81 will be detoured around the construction zone
- Local access will be maintained to homes and businesses as much as possible
- Truck traffic will be rerouted around Madison to keep heavy vehicles off local streets
- Construction will occur in phases to help limit disruption for residents and businesses
- Advance notice and updates will be provided to help travelers plan ahead



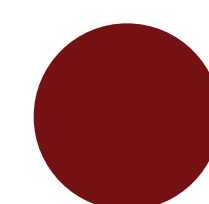
Schedule and Next Steps



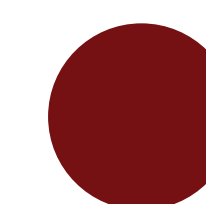
The U.S. Highway 81 proposed reconstruction project is in the *design* phase, with planning and coordination underway.



Fall 2025
Landowner
meetings to discuss
driveways and
property needs



2026 - 2028
Final design
and right-of-way
activities



2029
Construction is
anticipated to begin