



**South Dakota Department  
of Transportation**

# **S.D. Highway 25 Public Meeting**

Project Location: S.D. Highway 25 from S.D. Highway 38  
to the Hanson/Miner County Line

Project Number: P 0025(93)61 PCN 077D

Date: Tuesday, Oct. 28, 2025, 5:30 p.m. to 6:30 p.m.

Brandon Riss, PE

Road Design Engineering  
Supervisor

# Mission Statement

**We provide a safe and efficient public transportation system.**

<https://dot.sd.gov/>

# Purpose of the Meeting

Involve the public in the  
planning and design  
process

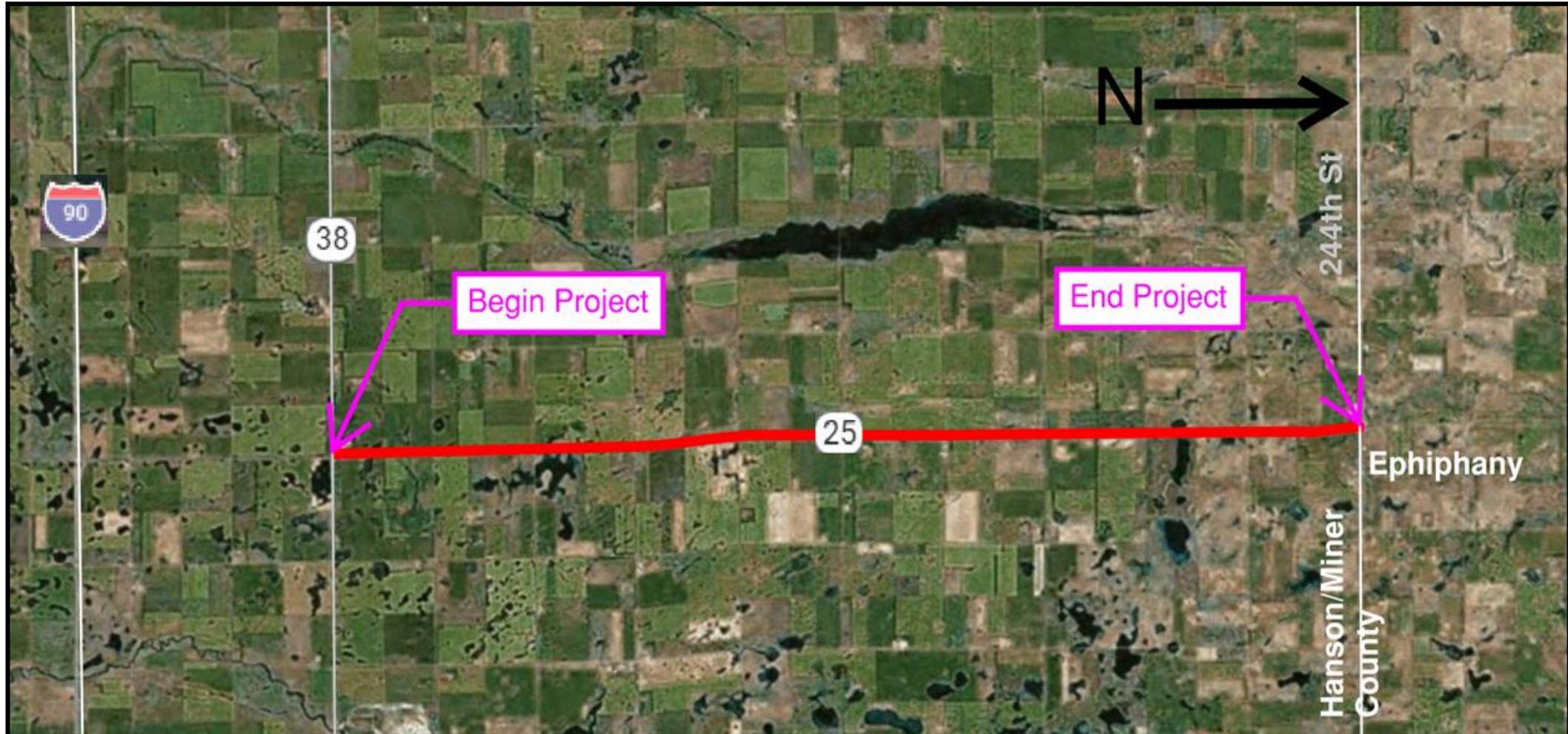
Provide a project  
overview

Gather input and  
comments



- ✓ Background information
- ✓ Proposed project
- ✓ Project schedule

# Project Limits



# Background Information

**Grading in 1967 and 1969**



**Resurfaced in 2014**



**Pipe Work in 2014**

# Traffic Data and Information

**2024 Average daily traffic (ADT): 848**



**2049 Projected ADT: 950**

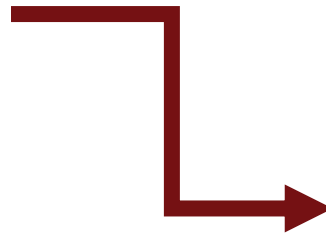


**10.5% Average truck traffic**

# Crash History

**32 Reported crashes**  
(Five-year period from 2020-2024)

- Fifteen (15) animal hit
- Six (6) fixed object off road
- Two (2) overturn
- Four (4) other
- One (1) fatalities
- Four (4) injury



## **Rural principal arterial**

- Reported crash rate = 3.98
- Statewide weighted crash rate = 1.69  
(crashes per million vehicle miles of travel)



# Why This Project is Needed



Drainage

Narrow Shoulders



# Proposed Improvements



Improve Vertical Curves  
and Drainage

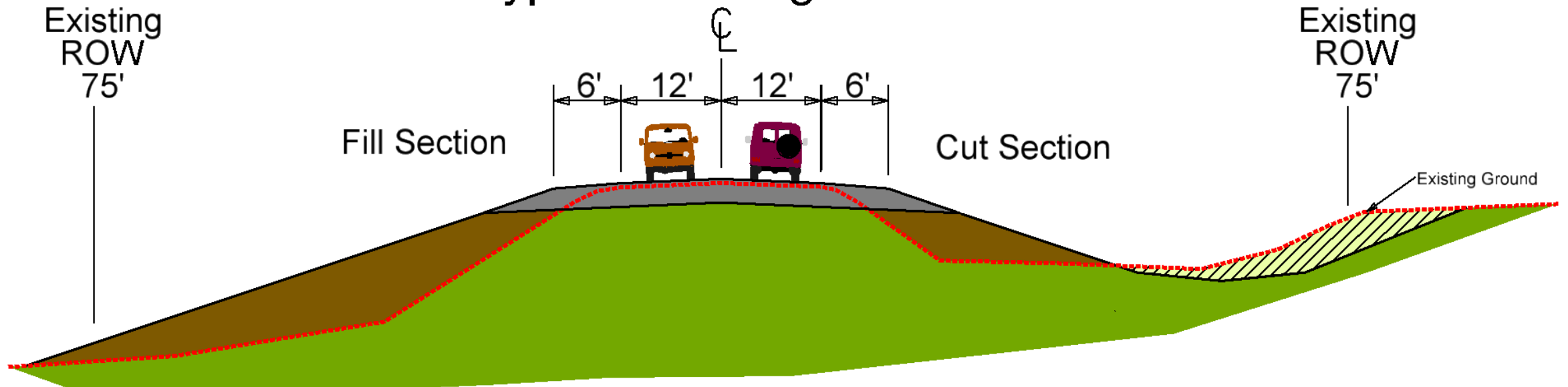
Replace fence and  
culverts

Widen roadway: six-foot  
shoulders

Surfacing

# Proposed Typical Section

## South Dakota Highway 25 Typical Grading Section



# Access Management

**Manage location and number of access points.**

Provide safe, efficient access to streets and highways by relocating, combining, and eliminating access points.



✓ **See handout**

# Right of Way (ROW)

**Existing Width is 150 feet**



**Purchase additional ROW if needed**



**Temporary easements if needed**

**See handout**

# Encroachments

## Private property in public ROW

Federal highway regulations for safety

## Examples

- Signs
- Private use (parking)
- Landscaping

## Notification

Owners of encroachments will be notified by the Mitchell Area Office.

See handout



# Utility Coordination

Some utilities may need to be relocated.



Utility companies negotiate easements with landowners.



- Triotel Communication Inc.
- Midcontinent Communications
- Hanson Rural Water
- Central Electric Cooperative, Inc.
- Northern Natural Gas \*HP\*
- South Bow Corporation

See handout

# Environmental, Social, and Economic Concerns

**This project is being developed in accordance with applicable State and Federal environmental regulations.**

- **National Environmental Policy Act of 1969 (NEPA), as amended.**
- **Section 106 of the National Historic Preservation Act**

Section 106 of the National Historic Preservation Act requires Federal actions to take into account the effects of project undertakings on historic properties. The public is invited to provide information on any known historic properties (archaeological sites, historic buildings, historic bridges, etc.).

# Environmental, Social, and Economic Concerns (Slide 2)

- **Section 404 of the Clean Water Act**

Federal regulations require that unavoidable wetland impacts caused by highway construction be avoided, minimized, or mitigated. If you are interested in creating or restoring wetlands on your property, please complete the Wetland Mitigation Registry Form in the handouts.

- **Section 4(f) of the USDOT Transportation Act of 1966**

Project development will include all possible planning to avoid and minimize harm to publicly owned parks, recreational areas, wildlife & waterfowl refuges, or public & private historical sites. The public is invited to review and comment on the possible effects on the activities, features, and attributes to: the Boggs Waterfowl Production Area and Lutz Lake.

# Environmental, Social, and Economic Concerns (Slide 3)

- **Section 7 of the Endangered Species Act**

The project will be coordinated with the U.S. Fish and Wildlife Service to determine effects to the following species that are known to occur in Hanson County:

- Birds: Rufa Red Knot
- Fish: Topeka Shiner
- Insects: Monarch Butterfly, Suckley's Cuckoo Bumble Bee, and Western Regal Fritillary
- Plants: Western Prairie Fringed Orchid

Efforts are proceeding to ensure this undertaking will not adversely affect listed species in Hanson County.

# Construction Traffic Control

Road will be closed to  
through traffic during  
construction

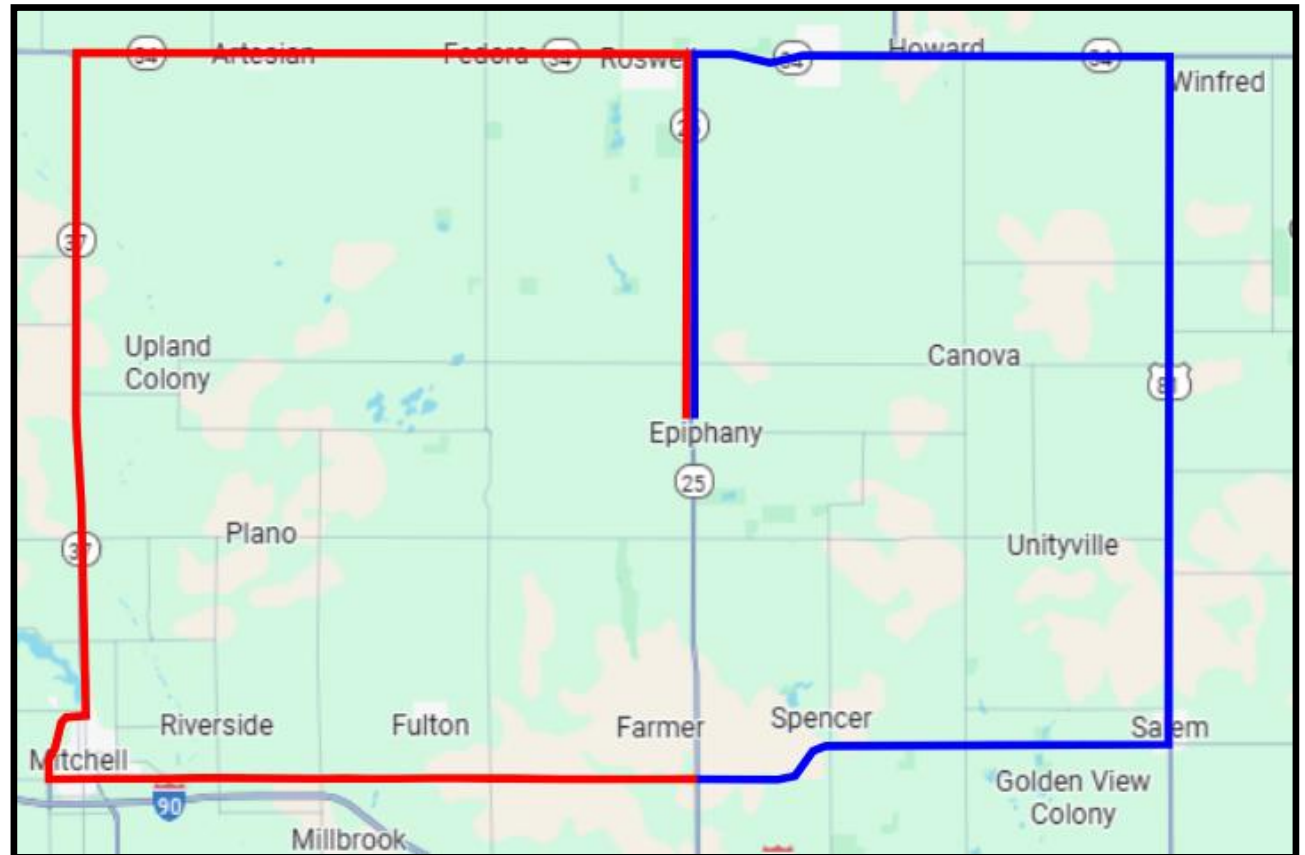


Local traffic and  
emergency vehicle  
access will always be  
maintained



# Construction Traffic Control (Slide 2)

Detour routes for  
S.D. Highway 25  
traffic during  
construction



# Landowner Meetings

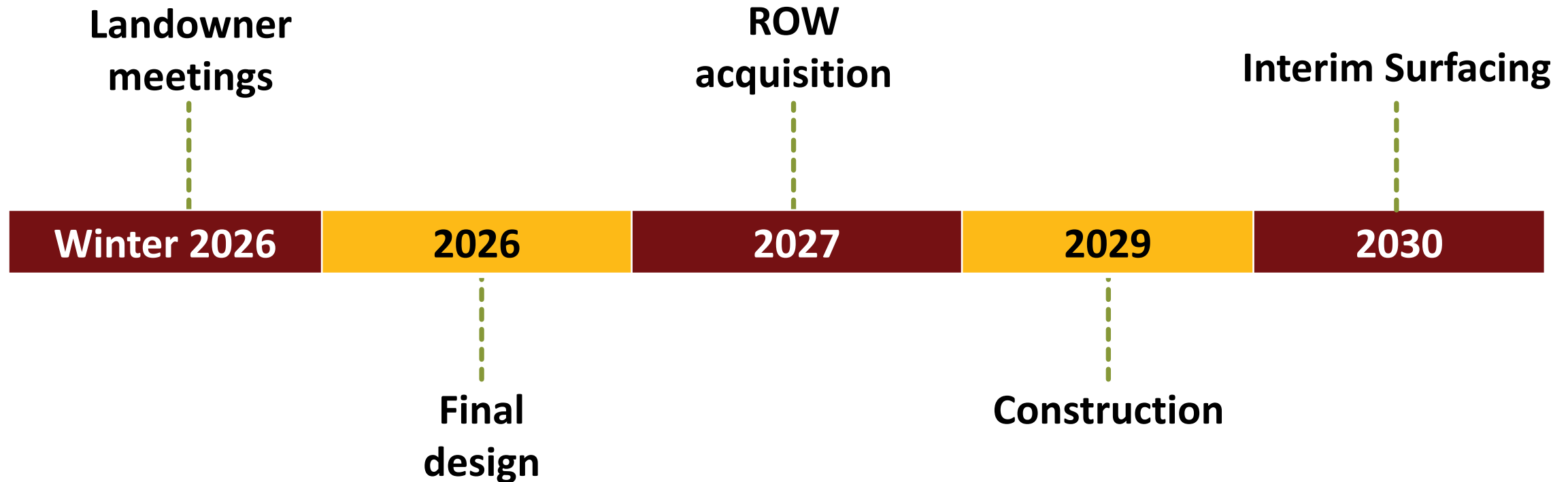
## Discussion Items

- Driveway locations/widths
- Fences
- Drainage
- Trees
- Temporary easements or ROW acquisition

# Tentative Project Schedule

Dependent on federal funding

Estimated cost: \$17 Million



# Questions or Comments

- Deadline: Friday, Nov.14, 2025
- Submit To:
  - Brandon Riss
  - South Dakota Department of Transportation
  - 5316 W. 60<sup>th</sup> St. N., Sioux Falls, S.D. 57107
  - Brandon.Riss@state.sd.us
- Website
  - <https://dot.sd.gov/projects-studies/projects/public-meetings/#Hans077D>

