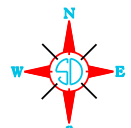
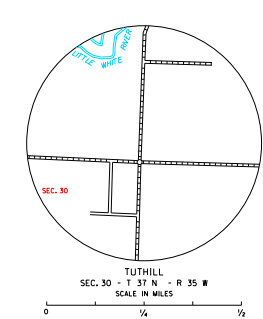
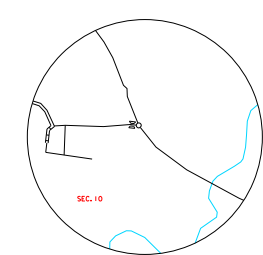
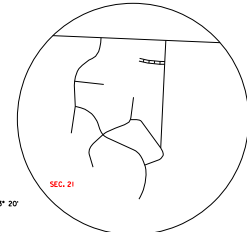


**LEGEND**

- |  |  |   |  |
|--|--|---|--|
| INTERSTATE HIGHWAY FULL CONTROL OF ACCESS                                    |  | NARROW STREAM   |  |
| U.S. NUMBERED HIGHWAY  |  | WIDE STREAM (INTERNATIONAL NAVIGATION)                          |  |
| STATE NUMBERED HIGHWAY   |  | DRAINAGE DITCH (MAIN)   |  |
| FEDERAL AID HIGHWAY SYSTEM   |  | IRIGATION DITCH   |  |
| FEDERAL AID SECONDARY HIGHWAY SYSTEM   |  | FA  |  |
| END OF FEDERAL AID DESIGNATED ROUTE  |  | RESERVOIR, POND OR LAKE   |  |
|  |  | RESERVOIR, WITH DAM   |  |
|  |  | DAM   |  |
|  |  | WASH OR STAMP LAKE  |  |
| PRIMITIVE ROAD   |  | DOCK, PIER, OR LANDING  |  |
| GRAVEL AND DRAGGED ROAD  |  | HIGHWAY BRIDGE (OVER 20 FT. IN LENGTH)                          |  |
| HARD SURFACED ROAD   |  | HIGHWAY BRIDGES CLOSELY SPACED                                  |  |
| DIVIDED HIGHWAY (LEFT/RIGHT SIDE)  |  | STEEL TRUSS BRIDGE LARGE  |  |
| INTERCHANGE  |  | CANTILEVER BRIDGE   |  |
| HIGHWAY GRADE SEPARATION   |  | FORD - ROAD ESTABLISHED   |  |
| POINTS BETWEEN WHICH DISTANCES ARE MEASURED INDICATED THIS                   |  | CAUSEWAY  |  |
| RAILROAD   |  | CATTLE GUARD  |  |
| RAILROADS IN JUNCTION  |  | PROMINENT ELEVATION   |  |
| TWO OR MORE TRACKS OF SEPARATELY OPERATED COMPANIES OR SEPARATE RIGHT-OF-WAY |  | STATE LINE  |  |
| RAILROAD CROSSINGS   |  | COUNTY LINE   |  |
| GRADE CROSSINGS  |  | SECTION LINE  |  |
| RAILROAD ABOVE   |  | FEDERAL AND STATE RESERVATION BOUNDARY LINE                     |  |
| RAILROAD BELOW   |  | WARRANTY (SMALL)  |  |
|  |  | WARRANTY (LARGE)  |  |
|  |  | OTHER CITIES AND VILLAGES                                       |  |
|  |  | UNINCORPORATED VILLAGE OR AREA OF CONCRETE CULTURE              |  |
| MILITARY FIELD   |  | INCORPORATED CITY OR VILLAGE (FIGURES INDICATE 1990 POPULATION) |  |
| AIRPORT, COMPLETE FACILITIES (COMMERCIAL OR MUNICIPAL)                       |  |   |  |
| AIRFIELD, LIMITED FACILITIES   |  |   |  |
| LANDING AREA OR STRIP INCLUDING PRIVATE AIR FIELDS                           |  |   |  |
| AIRWAY LIGHT BEACON (GENERAL)  |  |   |  |

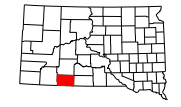


GENERAL HIGHWAY MAP  
**BENNETT COUNTY**  
 SOUTH DAKOTA

prepared by the  
 SOUTH DAKOTA DEPARTMENT OF TRANSPORTATION  
 in cooperation with the  
 U.S. DEPARTMENT OF TRANSPORTATION  
 FEDERAL HIGHWAY ADMINISTRATION

SCALE  
 0 1 2 3 4 5 MILES

2021



UNIVERSAL TRANSVERSE MERCATOR PROJECTION

CADD PRODUCED BY CARTOGRAPHIC SECTION SOUTH DAKOTA DEPARTMENT OF TRANSPORTATION

RESTRICTION OF LIABILITY: The South Dakota Department of Transportation makes no guarantee, warranty, or representation as to the accuracy, completeness, or reliability of the data and proprietary information contained herein and assumes no liability for any errors, omissions, or inaccuracies in the data or for any consequences arising from the use of this information. The user of this information shall be responsible for its own interpretation and use. This map is provided for informational purposes only and is not intended for any other purpose. It is given without warranty to the user.

COPIES OF THIS MAP ARE AVAILABLE FOR PUBLIC USE AT A NOMINAL COST  
 S.D. Department of Transportation  
 Map Sales -- Ph: 605/773-3299  
 Permit: South Dakota 2021