



**DEPARTMENT OF
TRANSPORTATION**

Public Meeting Open House

Project Location: Interstate 90 from Interstate 29 (Exit 396) to Cliff Avenue (Exit 399) and east of Interstate 229 (Exit 400)Project

Number: IM 0909(107)397 PCN 0A00; IM 0909(96)397 PCN 079C;
IM 0909(99)397 PCN 091F; IM 0909(100)397 PCN 091G

Date: June 24, 2026

Presenter Name: Jennifer Balk, P.E.

Presenter Job Title: Deputy Project Manager
(SEH)

Mission Statement

We provide a safe and efficient public transportation system.

<https://dot.sd.gov/>

Purpose of the Meeting

Involve the public in the planning and design process

Provide a project overview

Gather input and comments

- ✓ **Background information**
- ✓ **Proposed project**
- ✓ **Project schedule**

OVERALL PROJECT LAYOUT

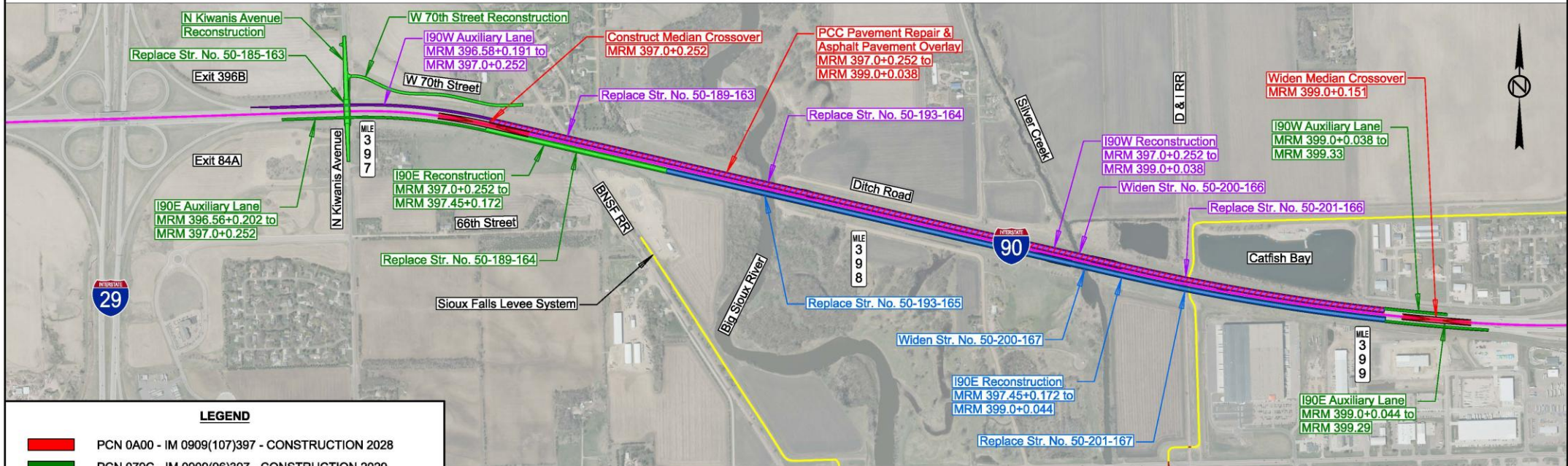
SCALE: 1"=1000'



PROJECT
IM 0909(1)397, IM 0909(96)397
IM 0909(99)397, IM 0909(100)397

SHEET	TOTAL SHEETS

Plotting Date: 5/11/2025



LEGEND

- █ PCN 0A00 - IM 0909(107)397 - CONSTRUCTION 2028
- █ PCN 079C - IM 0909(96)397 - CONSTRUCTION 2029
- █ PCN 091F - IM 0909(99)397 - CONSTRUCTION 2030
- █ PCN 091G - IM 0909(100)397 - CONSTRUCTION 2031-2032



Background Information I-90

Structures: I-90 in 1992 & 1993
Kiwanis Ave. in 1961



Last Surface Improvements:
Westbound 2007 Eastbound 2008.



Reconstruction Cliff Ave. Interchange 2013



**Shoulder resurfacing and guardrail
construction 2025**

Traffic Data and Information

2025 Average Daily Traffic (ADT): 13,750



2045 Projected ADT: 21,725



12.7% Average Truck Traffic

Crash History

119 Reported Crashes

(Five-year period from 2021-2025)

- One Hundred Nineteen (119) Total
- Seventeen (17) Rear End
- Thirty (30) Fixed Object
- Three (3) Overturn
- Sixteen (16) Side Swipes
- Thirty-five (35) Animal
- Thirteen (13) Other
- Twenty-one (21) Injuries
- Zero (0) Fatalities

Interstate - City

- Reported crash rate = 2.04
- Statewide weighted crash rate = 1.13 (crashes per million vehicle miles of travel)

Why This Project is Needed

Pavement Condition



Photo of Existing Pavement Showing Repairs and Spalling

Freeway Capacity



Photo of Kiwanis Bridge Deck Showing Approach Repairs

Improve Safety

Access Management

Manage location and number of access points

Provide safe, efficient access to streets and highways by relocating, combining, and eliminating access points.



✓ See handout

Right of Way (ROW)

Existing width varies 350 - 480 feet



Right-of-way (ROW) acquisition as needed



Temporary easements as needed

See handout

Encroachments

Private property in public ROW

Federal highway regulations for safety

Examples

- Signs
- Private use (parking)
- Landscaping

Notification

Owners of encroachments will be notified by the Mitchell Area Office.

See handout

Utility Coordination

Some utilities may need to be relocated.

Utility companies negotiate easements with landowners.

- Xcel Energy
- SDDOT
- Swiftel Communications
- MidAmerican Energy
- SDN
- Summit Utility
- Magellan
- Century Link
- Lumen
- Sioux Falls Utilities
- Vast Broadband
- Midco
- Renner Sanitary
- Minnehaha Community Water

See handout

Environmental, Social, and Economic Concerns

This project is being developed in accordance with applicable State and Federal environmental regulations.

- **National Environmental Policy Act of 1969 (NEPA), as amended.**
- **Section 106 of the National Historic Preservation Act**

Section 106 of the National Historic Preservation Act requires Federal actions to take into account the effects of project undertakings on historic properties. The public is invited to provide information on any known historic properties (archaeological sites, historic buildings, historic bridges, etc.). SDDOT coordinate with the Minnehaha County and Sioux Falls Boards of Preservation to solicit comment on effect to historic districts.

Environmental, Social, and Economic Concerns

- **Section 404 of the Clean Water Act**

Federal regulations require that unavoidable wetland impacts caused by highway construction be avoided, minimized, or mitigated. If you are interested in creating or restoring wetlands on your property, please complete the Wetland Mitigation Registry Form in the handouts.

- **Section 4(f) of the USDOT Transportation Act of 1966**

Project development will include all possible planning to avoid and minimize harm to publicly owned parks, recreational areas, wildlife & waterfowl refuges, or public & private historical sites.

Environmental, Social, and Economic Concerns

- **Section 7 of the Endangered Species Act**

The project will be coordinated with the U.S. Fish and Wildlife Service to determine effects to the following species that are known to occur in Minnehaha County:

- Birds: Rufa Red Knot
- Fishes: Topeka Shiner
- Insects: Monarch Butterfly, Suckley's Cuckoo Bumble Bee, Western Regal Fritillary
- Plants: Wester Prairie Fringed Orchid

Efforts are proceeding to ensure this undertaking will not adversely affect listed species in Minnehaha County.

Environmental, Social, and Economic Concerns

- **Floodplains**

This project occurs within floodplains and is being developed to minimize impacts to the base flood plains and avoid longitudinal and significant encroachment to the extent practical. The public is invited to comment on floodplain encroachments associated with the project.

- **Section 408 of the Clean Water Act**

The project occurs within the boundaries of the Sioux Falls Diversion Channel. SDDOT is coordinating with the City of Sioux Falls and the USACE to receive permission for any modifications in accordance with Section 408 of the CWA.

Environmental, Social, and Economic Concerns

I90 Corridor - Floodplain Info

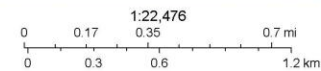


5/19/2026, 11:13:19 AM

 FEMA 100Yr Floodplain

 FEMA Floodway

 Rivers



Minnehaha County GIS, City Of Sioux Falls, Esri Canada, Esri, HERE, Garmin, INCREMENT P, USGS, METI/NASA, EPA, USDA

Construction Traffic Control

Five-Year plan

Year One (1): Crossovers and Patching

Year Two (2): Kiwanis Avenue and EBL BNSF Bridges & Pavement East of I-229

Year Three (3): EBL Big Sioux River to Cliff Avenue Interchange

Year Four and Five (4-5): WBL Cliff Avenue Interchange to I-29 Interchange



**I-90 open to Traffic during
Phased Construction**

Landowner Meetings

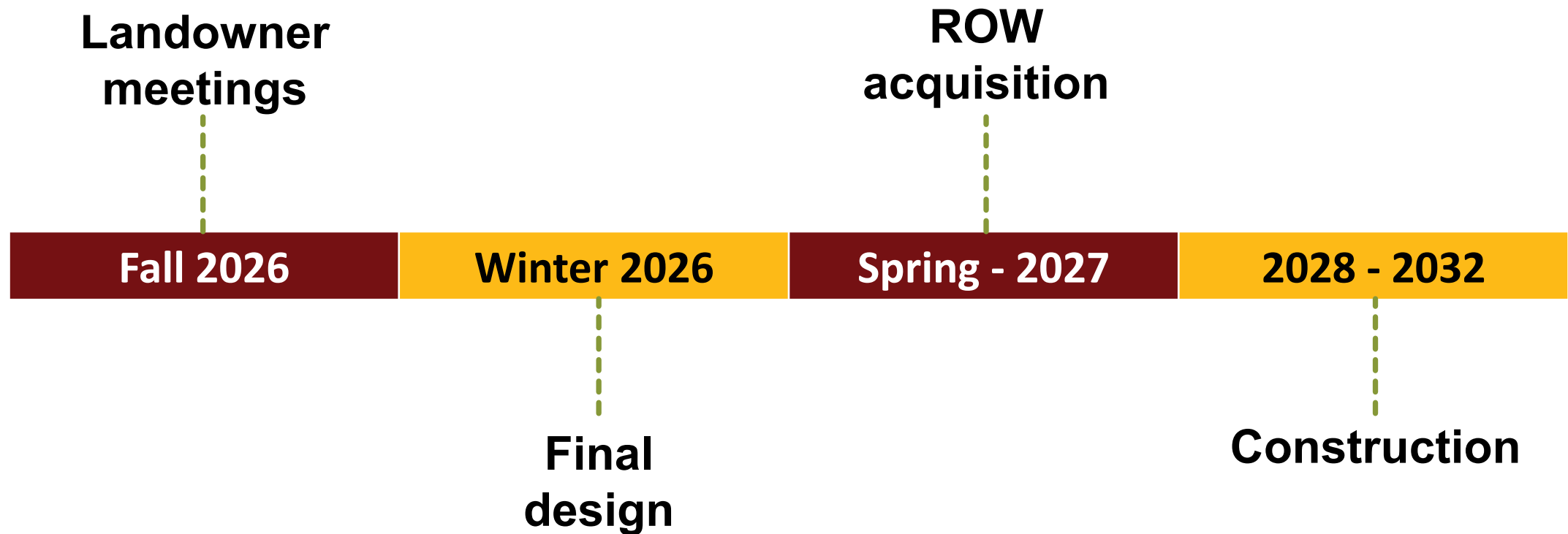
Discussion Items

- Temporary easements or Right-of-way (ROW) acquisition
- Fences
- Drainage
- Trees

Tentative Project Schedule

Dependent on federal funding

Estimated Project cost: \$101 million



Questions or Comments?

- Written Comment Deadline:
Friday, July 10, 2026
- Submit to:
David Burwitz, P.E.
South Dakota Department of Transportation
5316 W. 60th Street N., Sioux Falls, SD 57107
David.Burwitz@state.sd.us
- Website:
<https://dot.sd.gov/projects-studies/projects/public-meetings/#079C>

