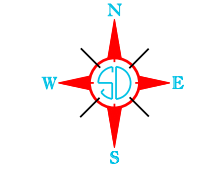


LEGEND	
INTERSTATE HIGHWAY (FULL CONTROL OF ACCESS)	
U.S. NUMBERED HIGHWAY	
STATE NUMBERED HIGHWAY	
FEDERAL AID HIGHWAY SYSTEM	
FEDERAL AID SECONDARY HIGHWAY SYSTEM	
END OF FEDERAL AID DESIGNATED ROUTE	
PRIMITIVE ROAD	
UNIMPROVED ROAD	
GRAVEL OR STONE SURFACED ROAD	
HARD SURFACED ROAD	
DIVIDED HIGHWAY (WITH FRONTAGE ROAD)	
INTERCHANGE	
HIGHWAY GRADE SEPARATION	
POINTS BETWEEN WHICH DISTANCES ARE MEASURED INDICATED THUS	
RAILROAD	
RAILROADS IN JUXTAPosition	
TWO OR MORE TRACKS OF SEPARATELY OPERATED COMPANIES ON ADJACENT RIGHT-OF-WAY	
RAILROAD CROSSINGS	
GRADE CROSSINGS	
RAILROAD ABOVE	
RAILROAD BELOW	
AIRPORT WITH SURFACED RUNWAYS	
MILITARY FIELD	
AIRPORT, COMPLETE FACILITIES (COMMERCIAL OR MUNICIPAL)	
ARFIELD, LIMITED FACILITIES	
LANDING AREA OR STRIP (INCLUDING PRIVATE AIR FIELDS)	
ARRAY LIGHT BEACON (GENERAL)	
NARROW STREAM	
WIDE STREAM (INTERMITTENT NAVIGATION)	
DRAINAGE DITCH (MAIN)	
IRRIGATION DITCH	
FAS RESERVOIR, POND OR LAKE	
RESERVOIR, WITH DAM	
DAM	
MARSH OR SWAMP LAND	
DOCK, PIER, OR LANDING	
HIGHWAY BRIDGE (OVER 20 FT. IN LENGTH)	
HIGHWAY BRIDGES CLOSELY SPACED	
STEEL TRUSS BRIDGE LARGE	
CANTILEVER BRIDGE	
ROAD ESTABLISHED	
CONCRETE FORD	
CAUSEWAY	
CATTLE GUARD	
PROMINENT ELEVATION	
STATE LINE	
COUNTY LINE	
CONGRESSIONAL TOWNSHIP LINE	
SECTION LINE	
FEDERAL AND STATE RESERVATION BOUNDARY LINE	
MONUMENT (SMALL)	
COUNTY SEAT	
OTHER CITIES AND VILLAGES	
UNINCORPORATED VILLAGE OR AREA OF CONGESTED CULTURE	
INCORPORATED CITY OR VILLAGE (FIGURES INDICATED 1990 POPULATION)	



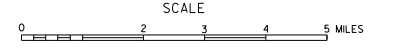
GENERAL HIGHWAY MAP

NORTH HALF

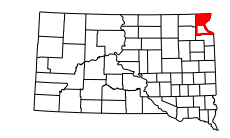
ROBERTS COUNTY

SOUTH DAKOTA

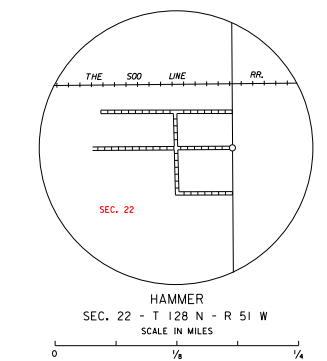
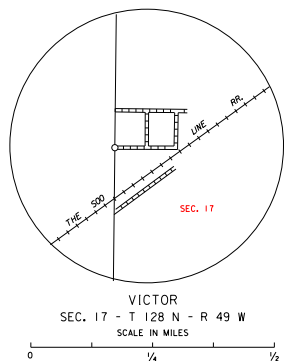
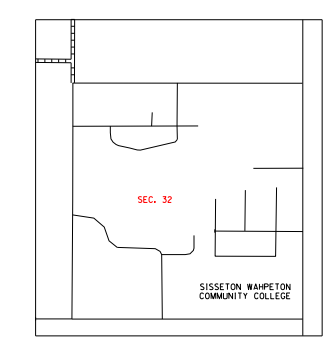
prepared by the
SOUTH DAKOTA DEPARTMENT OF TRANSPORTATION
in cooperation with the
U.S. DEPARTMENT OF TRANSPORTATION
FEDERAL HIGHWAY ADMINISTRATION



2021



UNIVERSAL TRANSVERSE MERCATOR PROJECTION



RESTRICTION OF LIABILITY: The South Dakota Department of Transportation makes no claims, promises or warranties about the accuracy, completeness or adequacy of the data and expressly disclaims liability for errors and omissions of the data content. No warranty of any kind, implied, expressed or statutory, including but not limited to the warranties of non-infringement of third party rights, title, merchantability and fitness for a particular purpose is given with respect to this data.