

# EQUIPMENT CALIBRATION, STANDARDIZATION, OR CHECK RECORD

Revised 06/16

PROCEDURE #46

Date: _____	Checked by: _____
Equipment: <u>Field Scale (Balances)</u>	<u>NIST Handbook 44, AASHTO M231,</u>
Location: _____	<u>ASTM E617, ASTM C138</u>
Previous Check Date: _____	Frequency: <u>Area/Field Lab - 12 Mo.</u>
Manufacturer: _____	Capacity: _____
Model No. _____	Readability: _____
Serial No. _____	Equipment No. _____

### Performance Check - Span

Mass Value (gram)	Original Check	In-Tolerance (Yes / No)	Tolerance (0.1%)		Final Weight
100			99.90	100.10	
200			199.80	200.20	
5000			4995.0	5005.0	
10000			9990.0	10010.0	
20000			19980.0	20020.0	
Platform Scales - Fresh Concrete Unit Weight			Tolerance (0.3%)		
5000			4985	5015	
10000			9970	10030	
20000			19940	20060	

Repeatability Test:

--	--

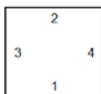
Zero Check:

### Performance Check - Cornerload

Calibration Mass Value: 5,000 gram

	Original Check (gram)	In-Tolerance* (Yes / No)	Tolerance (0.1%)		Final Weight
Front / Back			4995.0	5005.0	
Left / Right			4995.0	5005.0	

\*Note All mass values must be in tolerance for "In-tolerance" to be Yes.



Cornerload Test: Place calibration mass in center and "re-zero" balance. Check the scale in the 4 locations indicated and report as whole number.

Comments: \_\_\_\_\_  
 \_\_\_\_\_