

# Public Meeting

US Highway 212  
From Potter/Faulk County Line  
to Faulkton  
Faulk County

NH-PH 0212(167)245      PCN 03RQ

Neil Schochenmaier, PE  
Road Design Engineering Supervisor

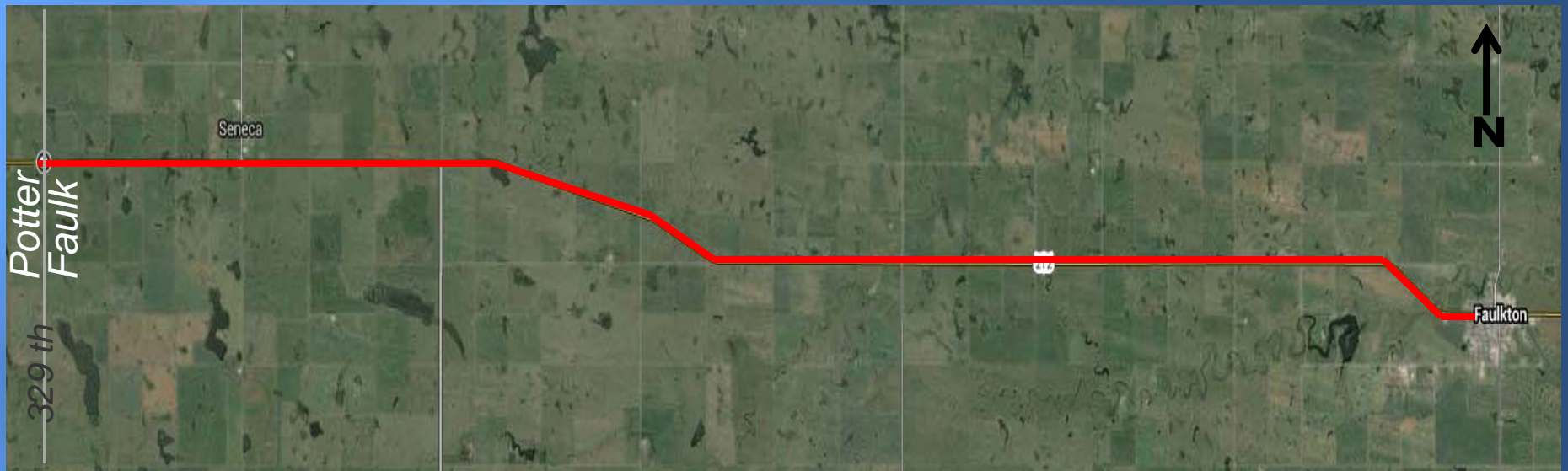
August 20, 2015



# Purpose of the Meeting

- **Involve the public in the planning and design process**
- **Provide a Project Overview**
  - Background Information
  - Proposed Project
  - Project Schedule
- **Gather Input and Comments**

# Project Limits



# Background Information

- Grading & Structures in 1926 & 1950
- Resurfaced in 1981 & 2008
- Box Culvert in 2008





# Traffic

- 2014 Average Daily Traffic (ADT) = 690
- 2034 Projected ADT = 861
- 10.8% Average Truck Traffic



# Crash History

- **3 Year Period from 2012 to 2014**
  - 42 Reported Crashes
    - 33 Animal Hit
    - 9 Run Off Road
  - 0 Fatalities
  - Weighted Crash Rate = 3.27
- **Rural Principal Arterial**
  - Statewide Average Crash Rate = 1.48  
(crashes per million vehicle miles of travel)

# Highway Deficiencies

- **Narrow Shoulders – 2 feet**
- **Intersection Modifications**
- **Structures**
- **Scour Protection**





# Proposed Improvements

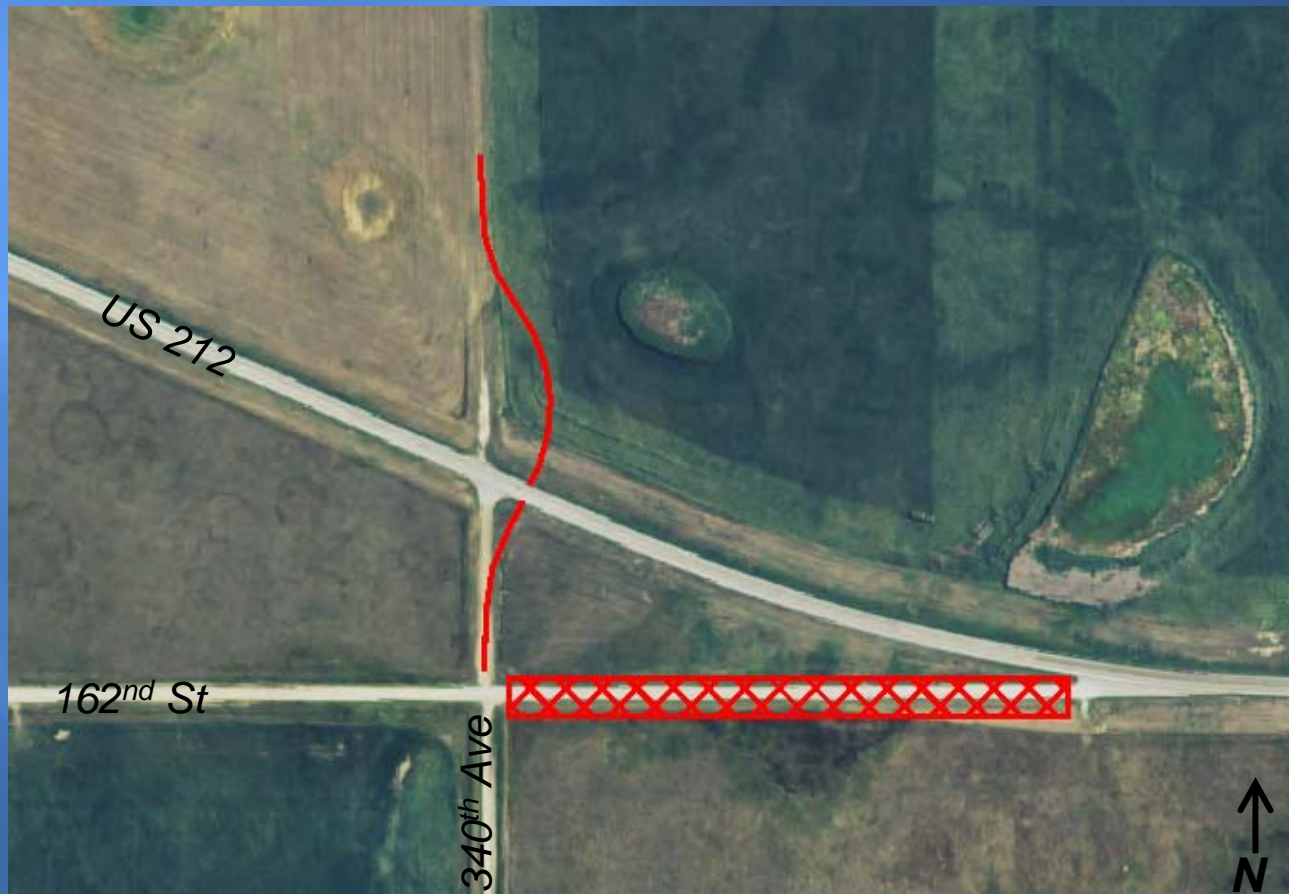
- Widen & Surface Shoulders to 6 feet
- Pipe Repair and/or Extensions
- Scour Protection at Snake Creek





# Proposed Improvements

- Realign Intersection
  - 162<sup>nd</sup> St & 340<sup>th</sup> Ave



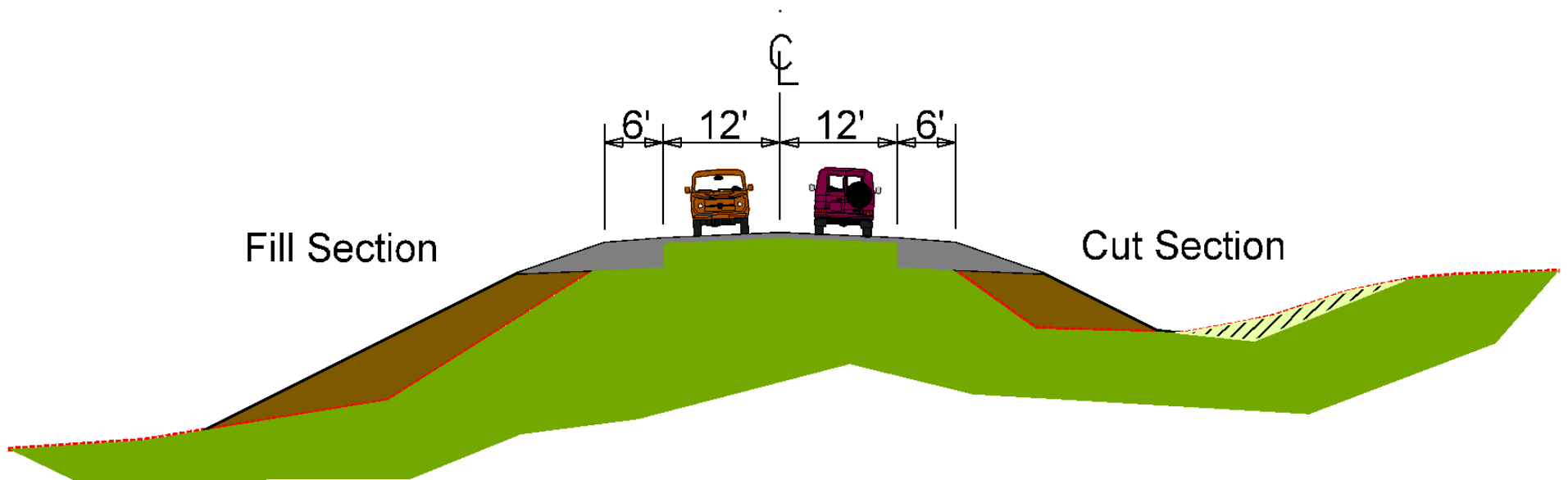
# Proposed Improvements

- Realign Intersection
  - US 212 & 162<sup>nd</sup> Street



# Proposed Typical Section

## US HIGHWAY 212 TYPICAL GRADING SECTION



# Access Management

- To provide safe, efficient access to streets and highways
- Limit number of direct accesses to major roadways

See Handout





# Right of Way (ROW)

- Existing Width
  - 200 feet - Potter/Faulk County Line to Seneca
  - 150 feet - Seneca to 9 miles West of Faulkton
  - 100 feet - 9 miles West of Faulkton to Faulkton
- Purchase Additional ROW - 50 feet
  - 9 miles West of Faulkton to Faulkton
- Temporary Easements as needed for construction

See Handout



# Encroachments

- **Encroachments - Private Property Located Within the Public ROW**
  - Federal Highway Regulations
  - Safety
  
- **Examples of Encroachments**
  - Signs
  - Private Use
  - Landscaping Items

**No encroachments identified on project.**

See Handout



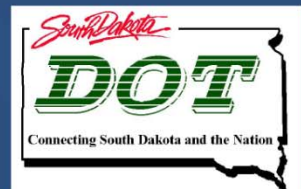
# Utility Coordination

- **Some Utilities may need to be relocated**
- **Utility Companies may negotiate easements with landowners as needed**

Basin Electric  
East River Electric  
FEM Electric  
Montana Dakota Utilities

Northwestern Energy  
Venture Communications  
WEB Water

See Handout



# Utility Coordination

## ➤ Any Known Private Utilities?

- Waterlines
- Drainfields
- Septic Tanks
- Underground Storage Tanks
- Underground Power Lines

## ➤ Contact SDDOT

See Handout





# Environmental, Social & Economic Concerns

The National Environmental Policy Act of 1969 (NEPA) requires that federally funded projects be reviewed to determine the social, economic, and environmental consequences of the action. Public involvement is beneficial to the implementation of a project's NEPA process. This project is being developed in accordance with applicable State & Federal environmental regulations. **Your input** on the following will aid in the project's development and NEPA review.

## Section 4(f) Property

Project action will include all possible planning to avoid and minimize harm to publicly owned parks, recreational areas, wildlife & waterfowl refuges, or public & private historical sites.

## Contaminated Materials

Project undertaking will take into account contaminated soils with relation to existing aboveground and underground storage tanks within or adjacent to project's area of potential effect.

See Handout



# Environmental, Social & Economic Concerns

## Section 106

Section 106 of the National Historic Preservation Act requires Federal actions to take into account the effects of project undertakings on historic properties.

## Wetlands

Federal regulations require that unavoidable wetland impacts caused by highway construction be mitigated. **Approximately 5.8 acres of wetlands may be impacted by the project.** If you are interested in creating or restoring wetlands on your property, please complete the Wetland Mitigation Registry Form in the handouts.

See Handout



# Environmental, Social & Economic Concerns

## Threatened & Endangered Species

According to the U.S. Fish & Wildlife Service, the following species are known to occur in Faulk County:

- Whooping Crane, Rufa Red Knot (birds)
- Northern Long-Eared Bat (mammal)

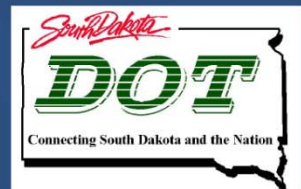
**Awaiting a final determination, but at this time no impacts are anticipated to these species by the project.**

See Handout



# Construction Traffic Control

- Road will be open to through traffic during construction
- Local traffic and emergency vehicle access will be maintained at all times
- Flaggers & delays may be expected at times





# Landowner Meetings

## ➤ Winter 2015

- Will be contacted by SDDOT to schedule appointment

## ➤ Held with individual landowners adjacent to the project

- Approach location / widths
- Fence
- Drainage
- Trees
- Temporary Easements or ROW acquisition

See Handout



# Tentative Project Schedule

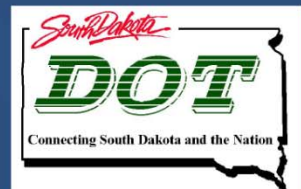
Dependent on Federal Funding

---

Landowner Meetings	Winter 2015
Final Design	2016
ROW Acquisition Process	2017
Construction	2018

---

Estimated Cost:	\$16.8 million
-----------------	----------------



# Questions or Comments

Please Submit Questions or Comments by  
**August 31, 2015** to:

Neil Schochenmaier  
South Dakota Department of Transportation  
700 East Broadway Avenue  
Pierre, SD 57501

[Neil.Schochenmaier@state.sd.us](mailto:Neil.Schochenmaier@state.sd.us)

Public Meeting Information

<http://sddot.com/dot/publicmeetings/default.aspx>

