

# Public Meeting

US Highway 18  
From US81 to SD19  
Hutchinson & Turner County

P 0018(179)402 PCN 036L

Karen Olson, PE  
Road Design Engineering Supervisor

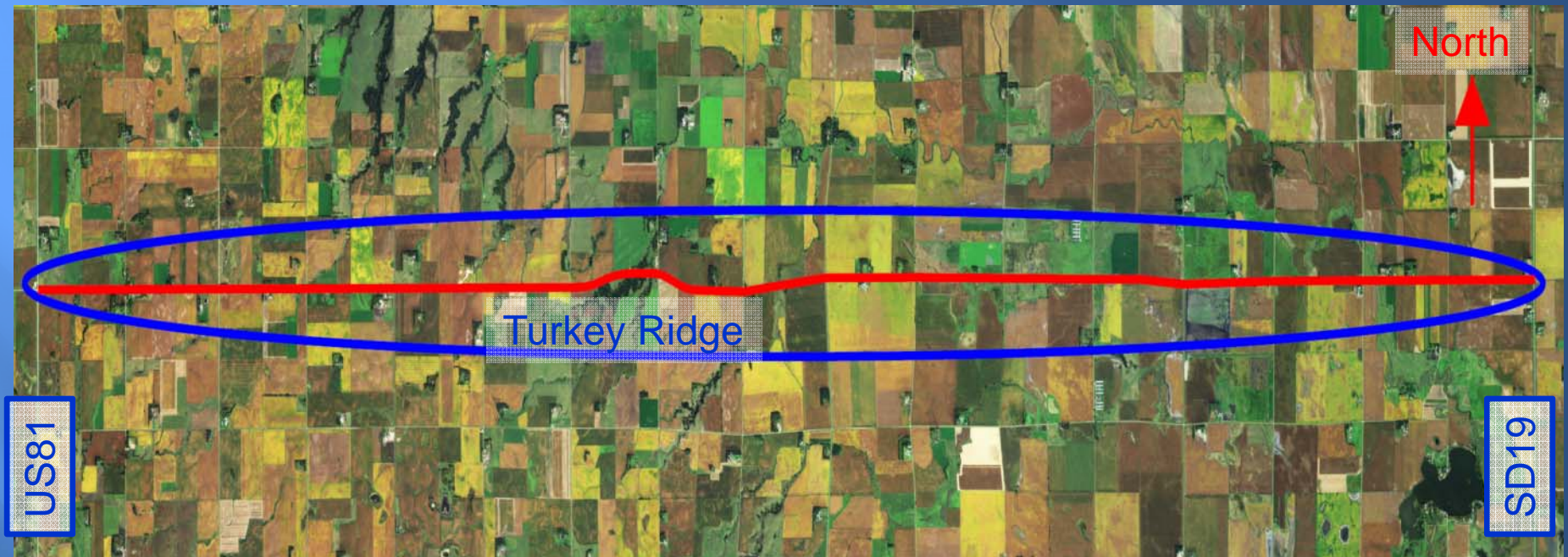
February 12, 2015



# Why are we here?

- ▣ **Involve You, the Traveling Public**
  - Discuss concerns, Exchange ideas
  
- ▣ **Project Overview**
  - Background Information
  - Proposed Project

# Project Limits





# Background Information

- ▣ Grading and Structures in 1927 and 1938
- ▣ Resurfaced in 1999
- ▣ Chip Seal in 2009



# Background Information

- ▣ 2014 Average Daily Traffic (ADT) = 848
- ▣ 2039 Projected ADT = 950
- ▣ 10.5% Average Truck Traffic

# Crash History

- ▣ **3 Year Period from 2011 to 2013:**
  - **17 Reported Crashes**
    - ▣ 9 Animal Hit
    - ▣ 3 Fixed Object Off Road
    - ▣ 3 Angle-Intersection
    - ▣ 1 Rear End
    - ▣ 1 Other
  - 0 Fatalities
  - Weighted Crash Rate = 1.43

**Statewide Weighted Crash Rate Average = 1.56  
(Rural Principal Arterial)**



# Highway Deficiencies

- ▣ Vertical Curves
- ▣ Narrow Shoulders – 2 ft
- ▣ Surfacing
- ▣ Structures





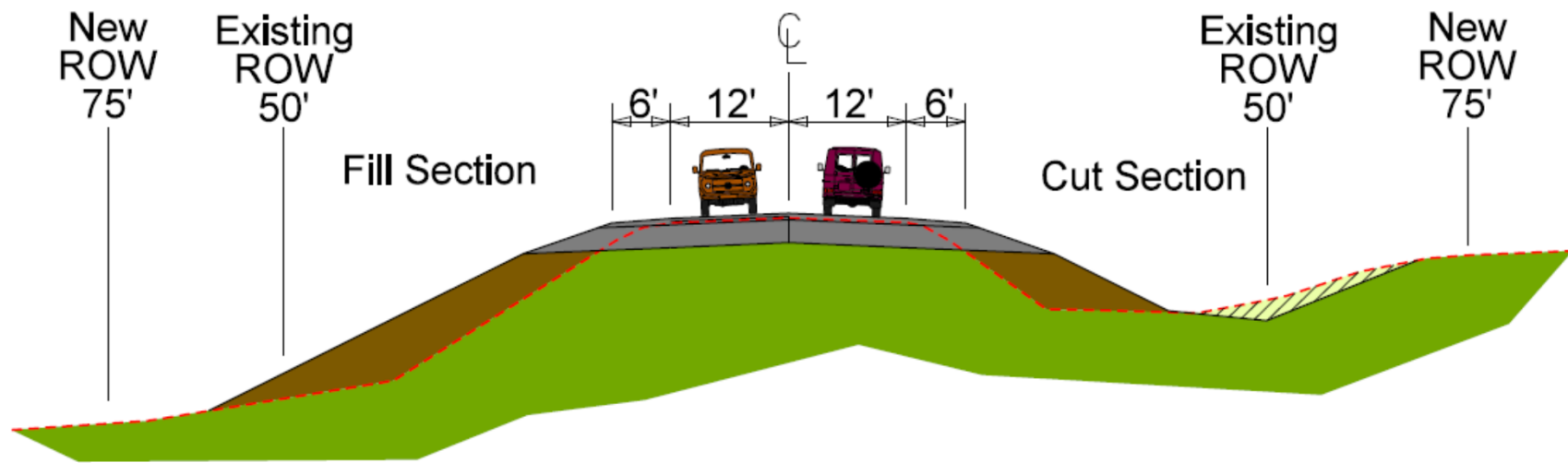
# Proposed Improvements

- ▣ Replace Structure over Turkey Ridge Creek
- ▣ Widen Roadway – 6 ft Shoulders
- ▣ Replace Fence and Culverts
- ▣ Interim Surfacing (Final Surfacing planned 2019)



# Proposed Project

## US HIGHWAY 18 TYPICAL GRADING SECTION



# Access Management

- ▣ To provide safe, efficient access to streets and highways
- ▣ Limit number of direct accesses to major roadways

See Handout





# Right-of-Way (ROW)

- ▣ Existing Width - 100 ft
- ▣ Purchase additional ROW totaling 150 ft corridor
  - < 150 ft through Turkey Ridge and near houses
- ▣ Permanent Easements
- ▣ Temporary Easements

See Handout



# Encroachments

- ▣ Private property, such as signs, buildings or private utilities located within the public ROW
  - Federal Highway Regulations
  - Safety
- ▣ Owners of encroachments will be contacted by Yankton Area Personnel

See Handout



# Utility Coordination

- ▣ Some of the existing utilities may need to relocate
- ▣ Utility Companies may negotiate easements with landowners as needed

See Handout





# Utility Coordination

- ▣ Utility Companies:
  - Western Area Power Administration
  - Northwestern Energy
  - Century Link
  - Southeastern Electric
  - Wide Open West (WOW)
  - Golden West Communications
  - Fort Randall Telephone
  - Midcontinent Communications
  - TM Rural Water
  - B-Y Rural Water

See Handout



# Utility Coordination

- ▣ Any Known Private Utilities – Contact SDDOT
  - Waterlines
  - Drainfields
  - Septic Tanks
  - Underground Storage Tanks
  - Underground Power Lines

See Handout



# Environmental, Social & Economic Concerns

The National Environmental Policy Act of 1969 (NEPA) requires that federally funded projects be reviewed to determine the social, economic, and environmental consequences of the action. Public involvement is beneficial to the implementation of a project's NEPA process. This project is being developed in accordance with applicable State & Federal environmental regulations. **Your input** on the following will aid in the project's development and NEPA review.

## Section 4(f) Property

The project was reviewed to determine potential impacts to Section 4(f) properties, i.e. publicly owned parks, recreational areas, wildlife & waterfowl refuges, or public & private historical sites. **No Section 4(f) properties have been identified along the project.**





# Environmental, Social & Economic Concerns

## Section 106

Section 106 of the National Historic Preservation Act requires Federal actions to take into account the effects of project undertakings on historic properties. No historic properties were identified during a cultural resources survey of the project. **The State Historic Preservation Office (SHPO) has concurred in a Section 106 determination of No Historic Properties Affected for this project.**

## Contaminated Materials

**No contaminated materials have been identified along the project, to date.** If you have information on contaminated materials, or underground/above ground storage tanks that could be encountered during construction, please let us know.



# Environmental, Social & Economic Concerns

## Threatened & Endangered Species

The U.S. Fish & Wildlife Service will review the project to determine if it will impact the following species that are known to occur in Hutchinson and Turner Counties:

- Birds: Whooping Crane, Rufa Red Knot
- Mammals: Northern Long-eared Bat
- Fish: Topeka Shiners
- Plants: Western Prairie-Fringed Orchid

## Wetlands

Federal regulations require that unavoidable wetland impacts caused by highway construction be mitigated. **Approximately 5.74 acres of wetlands may be impacted by the project.** If you are interested in creating or restoring wetlands on your property, please complete the Wetland Mitigation Registry Form in the handouts.

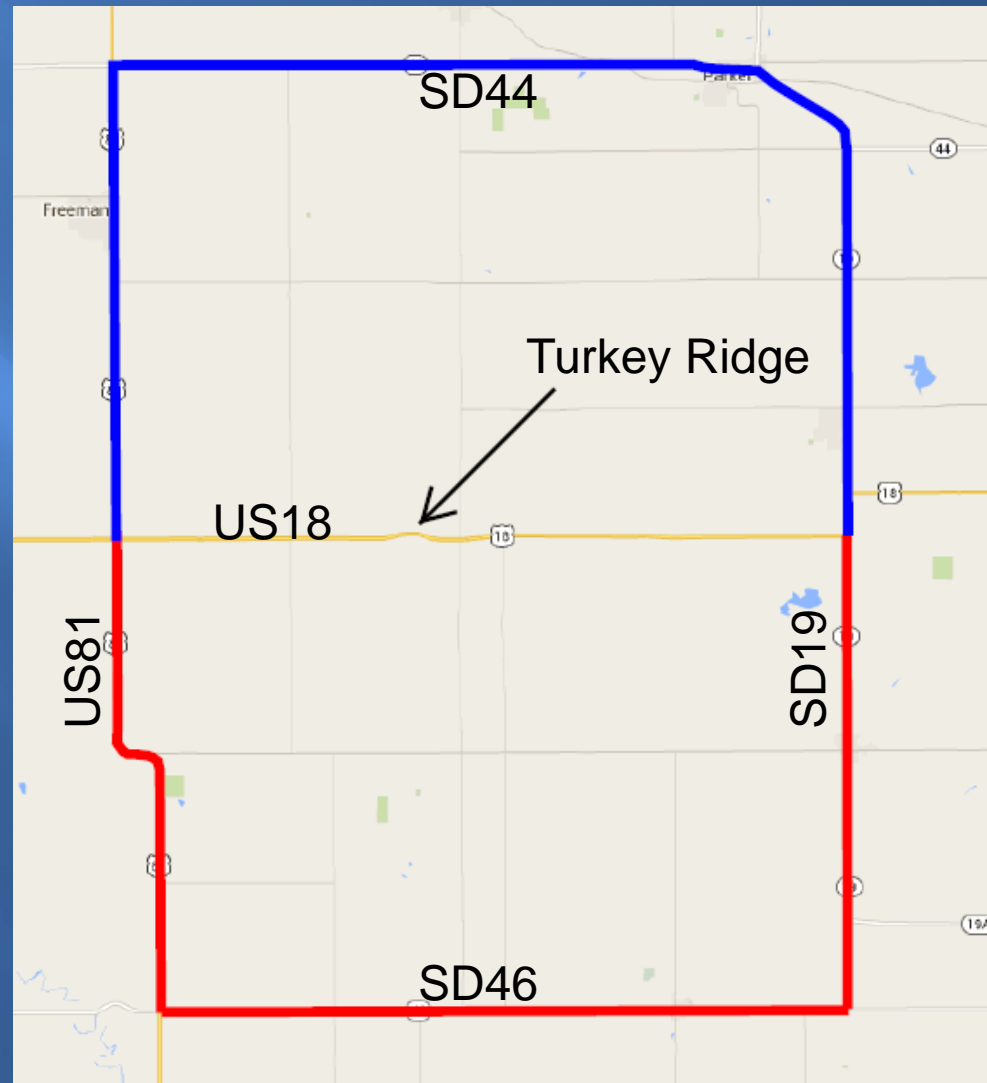


# Construction Traffic Control

- ▣ Road will be closed to through traffic during construction
- ▣ Local traffic and emergency vehicle access will be maintained at all times

# Construction Traffic Control

Detour routes for  
highway US 18  
traffic during  
construction





# Landowner Meetings

- ▣ Summer 2015
- ▣ Held with individual landowners
  - Driveway location / widths
  - Fence
  - Drainage
  - Trees
- ▣ Landowners will be contacted by SDDOT to schedule an appointment

See Handout



# Tentative Project Schedule

## Dependent on Federal Funding

---

Landowner Meetings	Summer 2015
Final Design	2016
ROW Acquisition Process	2017
Construction	2018

---





Estimated Cost:	\$19.8 million
-----------------	----------------

Final Surfacing is planned for 2019



# Projects in the Area



-  Future Grading and Asphalt Concrete Surfacing
-  Grading, Structure, and Interim Surfacing in 2018
-  Shoulder Widening, Str. Replacement, and Pipe Repair in 2017
-  Asphalt Concrete Surfacing in 2019

# Questions?

Please Submit Questions or Comments by  
February 26, 2015 to:

[Karen.Olson@state.sd.us](mailto:Karen.Olson@state.sd.us)

South Dakota Department of Transportation  
700 East Broadway Avenue  
Pierre, SD 57501

Public Meeting Information

<http://sddot.com/dot/publicmeetings/default.aspx>

