

# Public Meeting

February 18, 2014

US Highway 18 from SD19 to I29

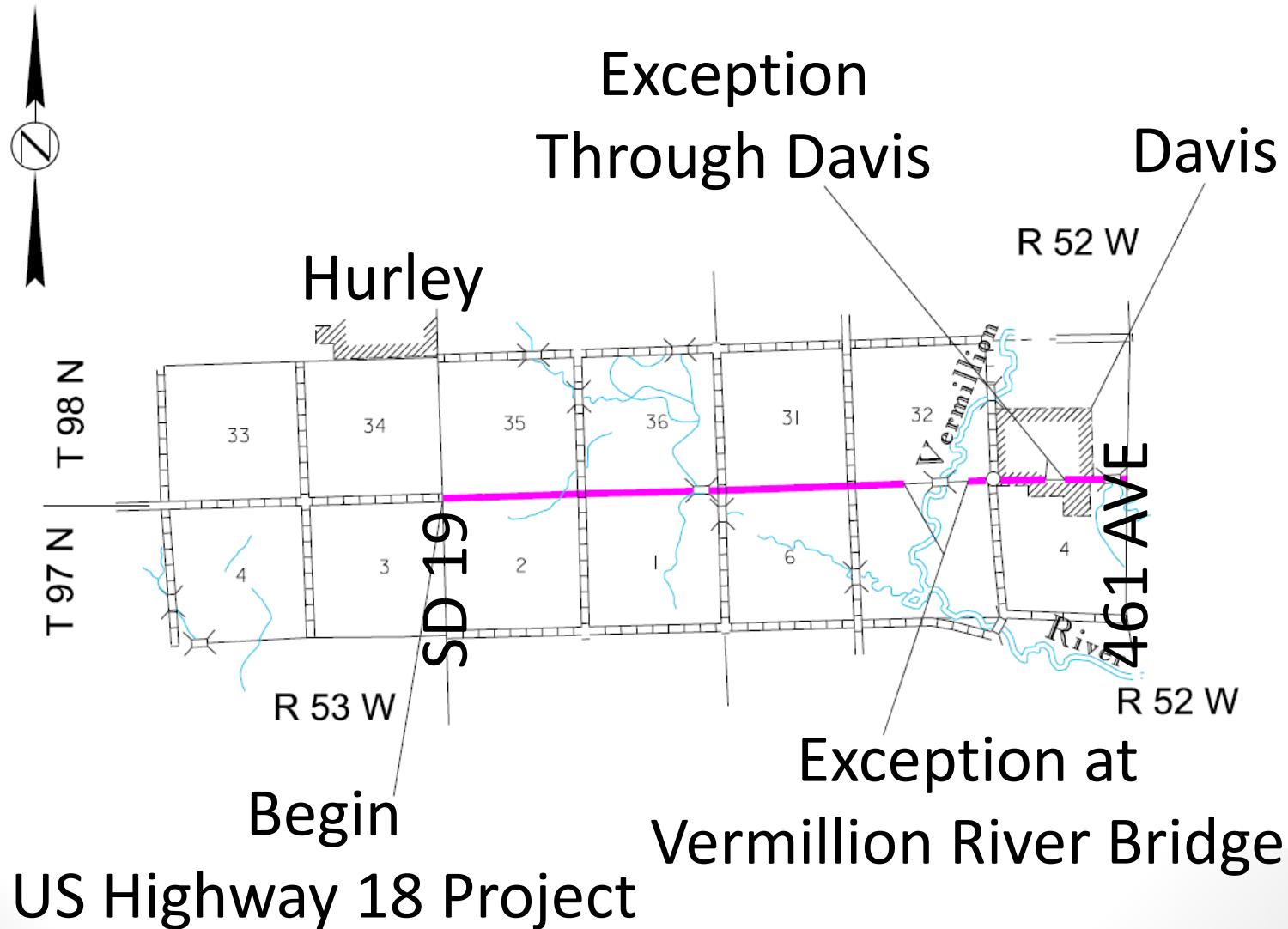
Turner & Lincoln Counties

*NH-PH 0018(180)420 PCN 036A*

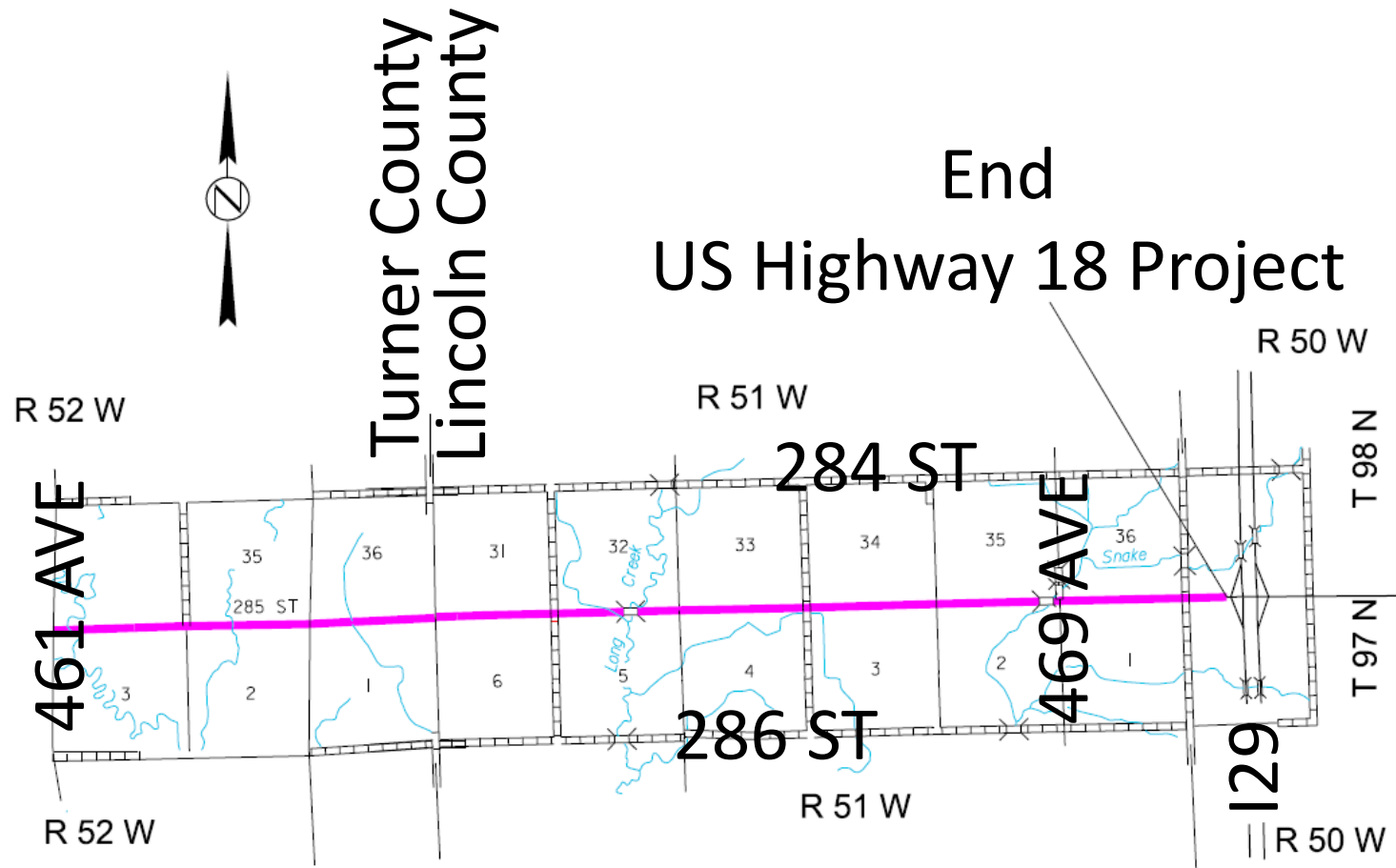
Cary Cleland

Engineering Supervisor Sioux Falls Road Design

# Project Limits



# Project Limits



# Why are we here?

- Involve Public in Design Process
  - Exchange of Ideas
  - Discuss Concerns
- Review
  - Project Scope
  - Preliminary Project Layouts
  - Schedule

# Background Information

## US 18 from SD 19 to Davis

- Constructed in 1949
- Last Surface Improvement – Overlay 2001
- Structure replacement – Vermillion River Bridge 2013

## US 18 from Davis to I29

- Constructed in 1953
- Last Surface Improvement – Overlay 1997

# Background Information

## Traffic Data (ADT – Average Daily Traffic)

- Current (2012) 1,129
- Projected (2032) 1,697
- Trucks 17.3%

# Crash History

2010 - 2012

Crash Type	Number of Crashes
Angled Intersection	3
Head-on	1
Fixed Object	5
Run-off-the-road	4
Sideswipe	2
Animal Strike	7
Total Crashes	22

Crash Rate = 3.75

Statewide Average (Rural Principal Arterial) = 1.73

# Deficiencies

- Narrow roadway – 2' shoulders
- Bridges and box culverts nearing end of service life
- Deteriorated pavement
- Some culverts deteriorated



# Proposed Project Improvements

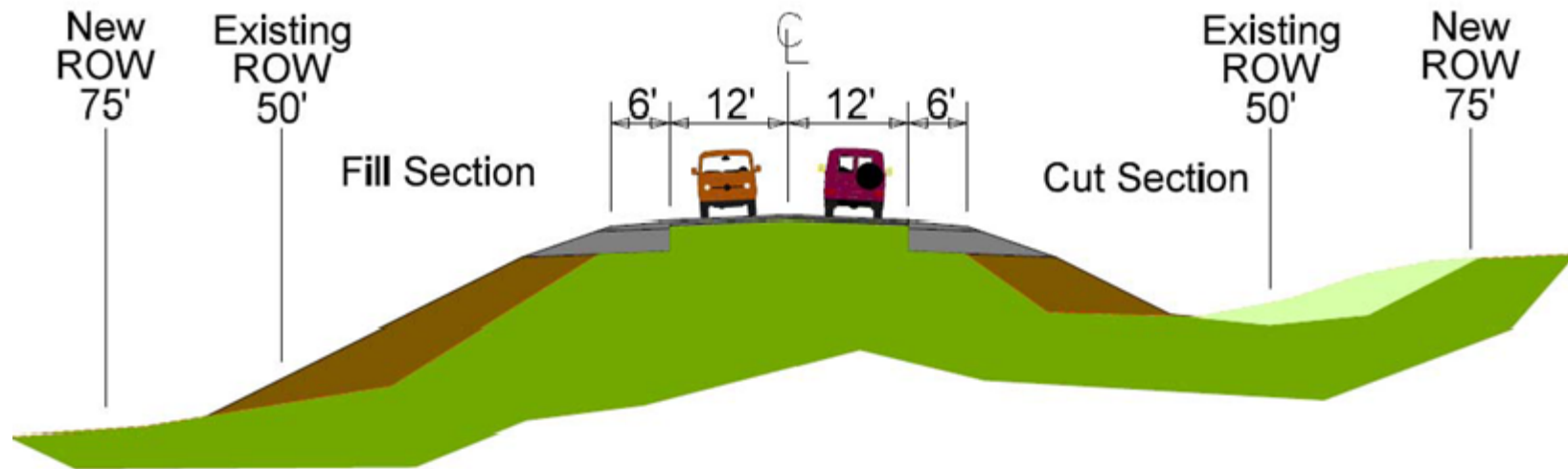
- Shoulder Widening
- 12' Driving Lanes
- 6' Shoulders
- 2 grading segments to improve sight distance
- 2 grading segments at bridge approaches
- Mill and Asphalt Concrete Overlay (Includes Davis)
- Borrow sites will be needed

# Proposed Project Improvements

- Replace structures
  - Retain structure 1300' West of Delaware Reformed Church
- Replace and/or extend pipe culverts
- Reconstruct approaches and replace approach pipe
- Review for Turn Lanes at 463<sup>rd</sup>

# Proposed Project

## US Highway 18 Typical Grading Section



# Right-of-Way

- Additional Right-of-Way (ROW) will be acquired
  - Current 50' from centerline
  - Future 75' from centerline
  - Reduced ROW width at farmsteads/homes/businesses will be reviewed
- Temporary Easements for construction

See Handout

# Encroachments

- Private property located within public right-of-way
- Common Encroachments
  - Signs
  - Fence
  - Landscaping
- Property Owners of Encroachments will be notified by the SDDOT Sioux Falls Area Office

See Handout

# Access Management

- Provide safe, efficient access to streets and highways
- Restricts number of direct access points to major roadways
- Provides adequate spacing for driveways and cross roads

See Handout

# Utilities

- Some existing utilities will need to be relocated
- Utility Companies will negotiate easements as needed

Southeastern Electric  
Xcel Energy  
East River Electric Power Cooperative  
Knology  
AT&T  
Century Link  
Golden West Communications  
Midcontinent Communications  
T-M Rural Water  
South Lincoln Rural Water

See Handout

# Environmental

- This project is being developed in accordance with applicable State and Federal environmental regulations
- In accordance with the National Environmental Policy Act of 1969 (NEPA), as amended, coordination has been initiated with State & Federal resource agencies.

See Handout



# Environmental

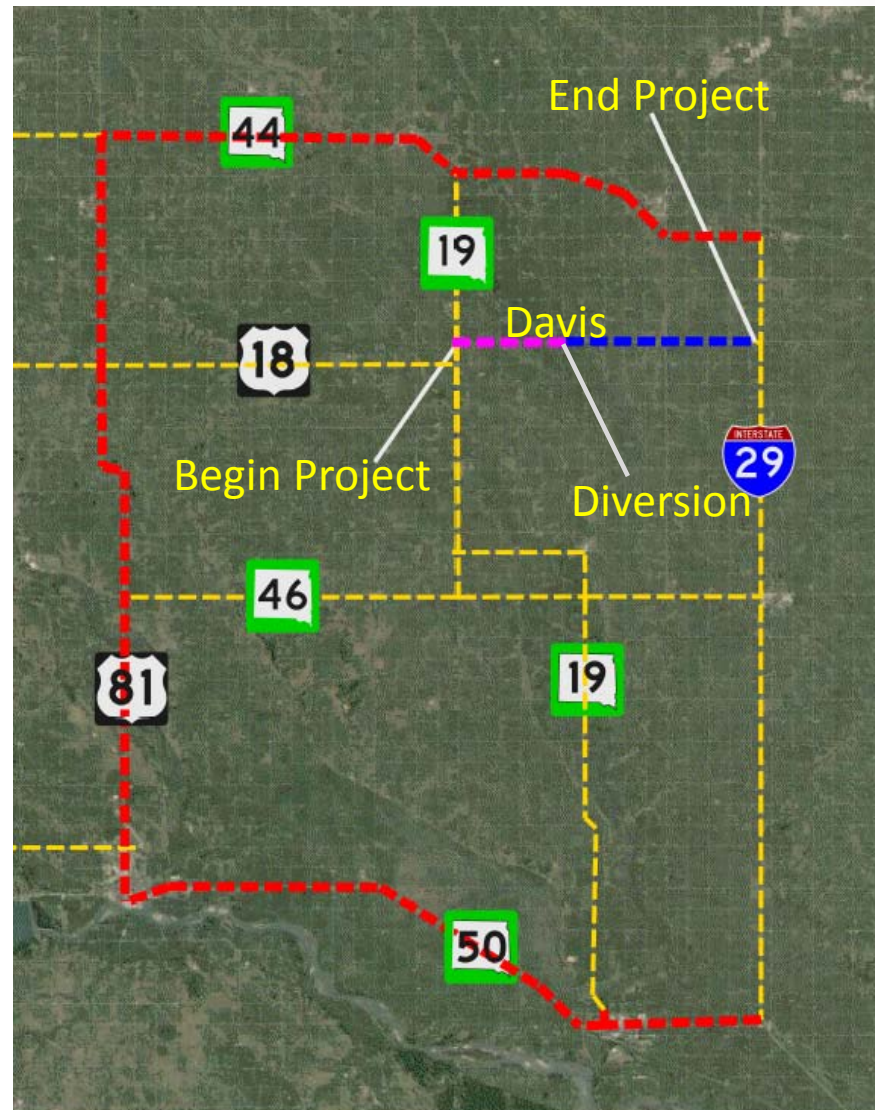
- A cultural resources survey will be conducted along the US18 project corridor
- The project is being reviewed to determine extent of wetland impacts
- Threatened Species – Topeka Shiner

See Handout

# Construction Traffic Plan

## Phase 1–

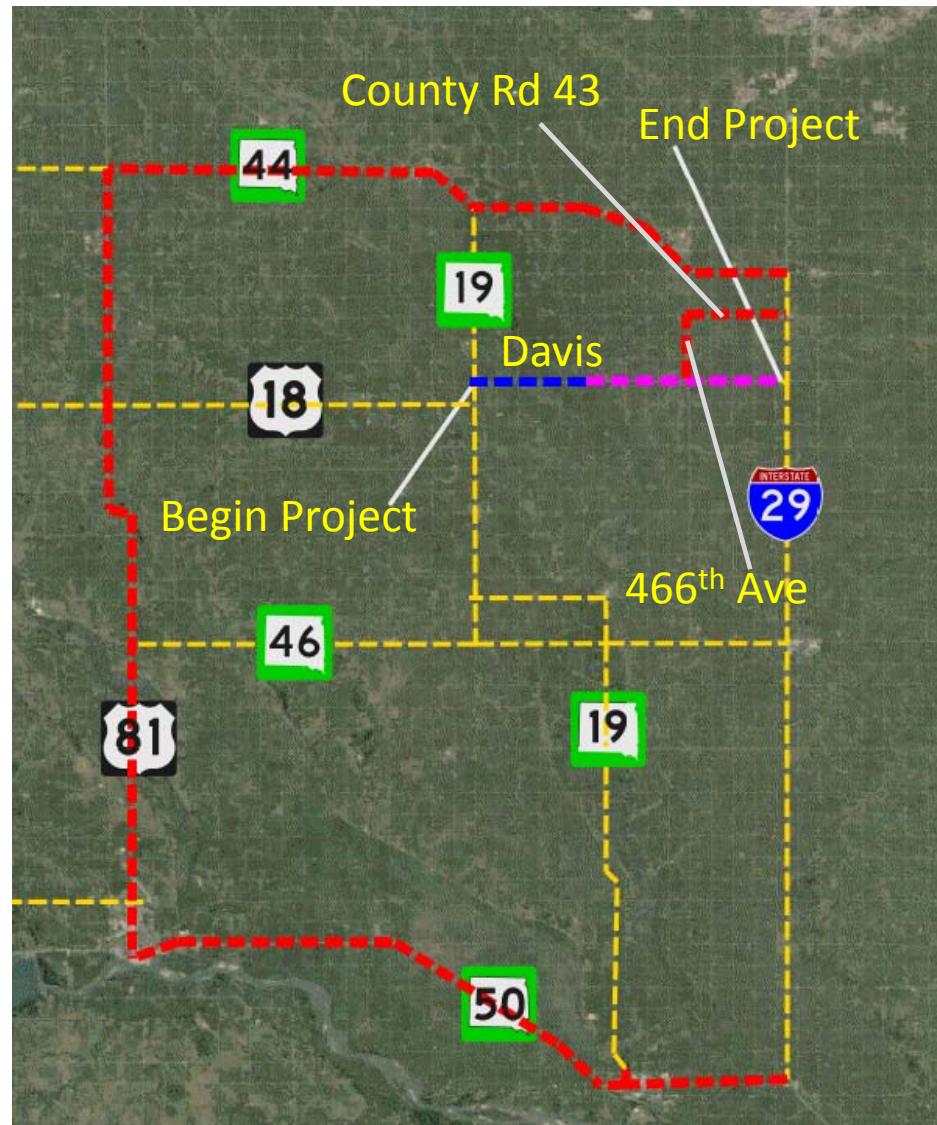
- Shoulder Widening from SD 19 to 461<sup>st</sup> Avenue
- Local traffic maintained from Davis to I29
- **Detour**



# Construction Traffic Plan

## Phase 2 –

- Shoulder widening from 461<sup>st</sup> Avenue to I29
- Local traffic maintained from SD19 to Davis
- **Detour**

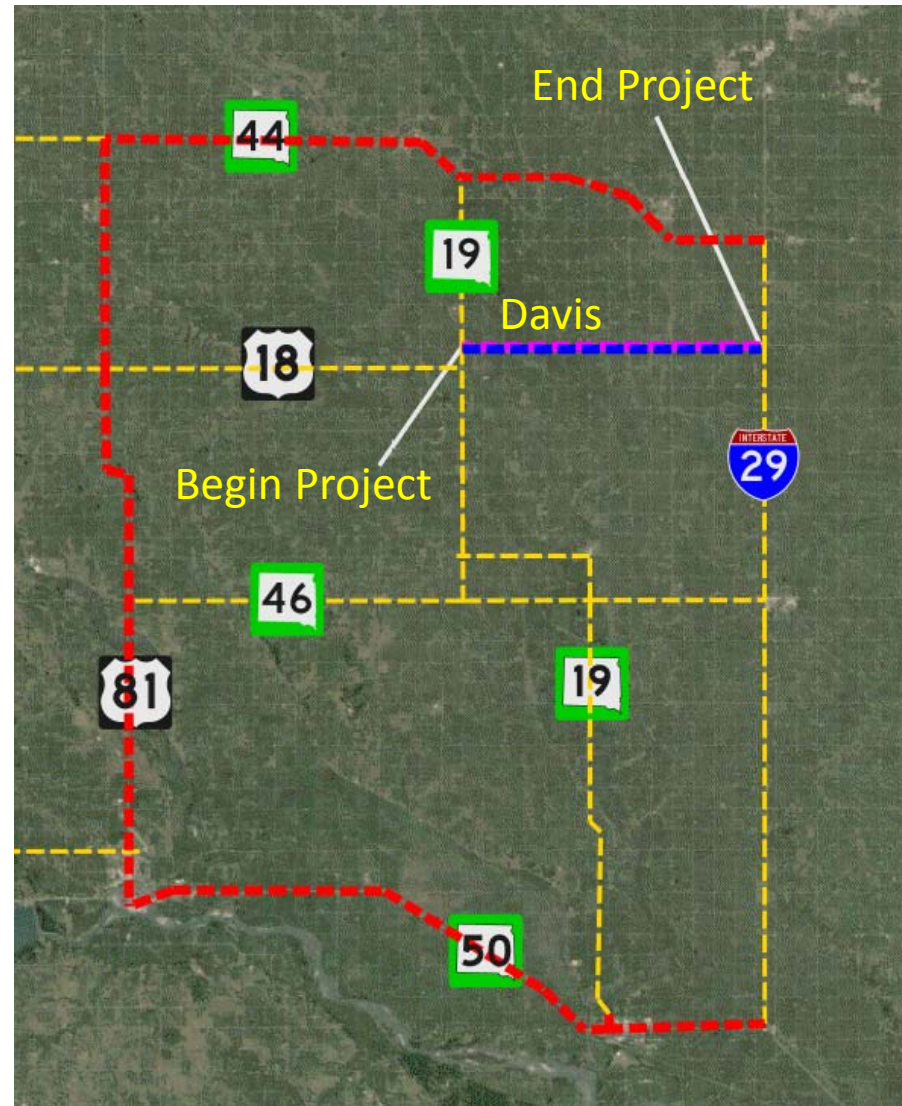




# Construction Traffic Plan

## Phase 3 –

- Mill and AC Overlay from US81 to I29 (Separate Project in 2018)
- Traffic Maintained



# Landowner Meetings

- Held with individual affected landowners
  - Driveway location/widths, fence, drainage, trees, etc.
- Summer 2014
- Landowners will be contacted by SDDOT

See Handout

# Tentative Project Schedule

Public Meeting	February 18, 2014
Landowner Meetings	Summer 2014
Final Design Completed	Winter 2014
ROW Acquisition Process	2015
Letting	Winter 2016
Construction	2017
Mill and Asphalt Resurfacing	2018
(Separate Project – US 81 to I29, including Davis)	

# Estimated Construction Costs

US 18 from SD19 to I29 (2017)  
\$6.851 Million

Asphalt Surfacing (Separate Project  
2018 - US81 to I29, including Davis)  
\$10.146 Million

# Questions?

Please Submit Questions or Comments by  
**March 4, 2014** to:

Megan Steever, Road Design Engineer  
**Megan.Steever@state.sd.us**  
South Dakota Department of Transportation  
5316 W. 60th St. N.  
Sioux Falls, SD 57107

Public Meeting Information  
**<http://www.sddot.com/dot/publicmeetings/default.aspx>**