

Public Meeting/Open House
August 2, 2011

EMERGENCY DRAWDOWN OF TWIN LAKES

SD DOT DRAINAGE PERMIT

PROJECT NH0081 (95) 112 PCN 03CU
KINGSBURY COUNTY & BROOKINGS COUNTY

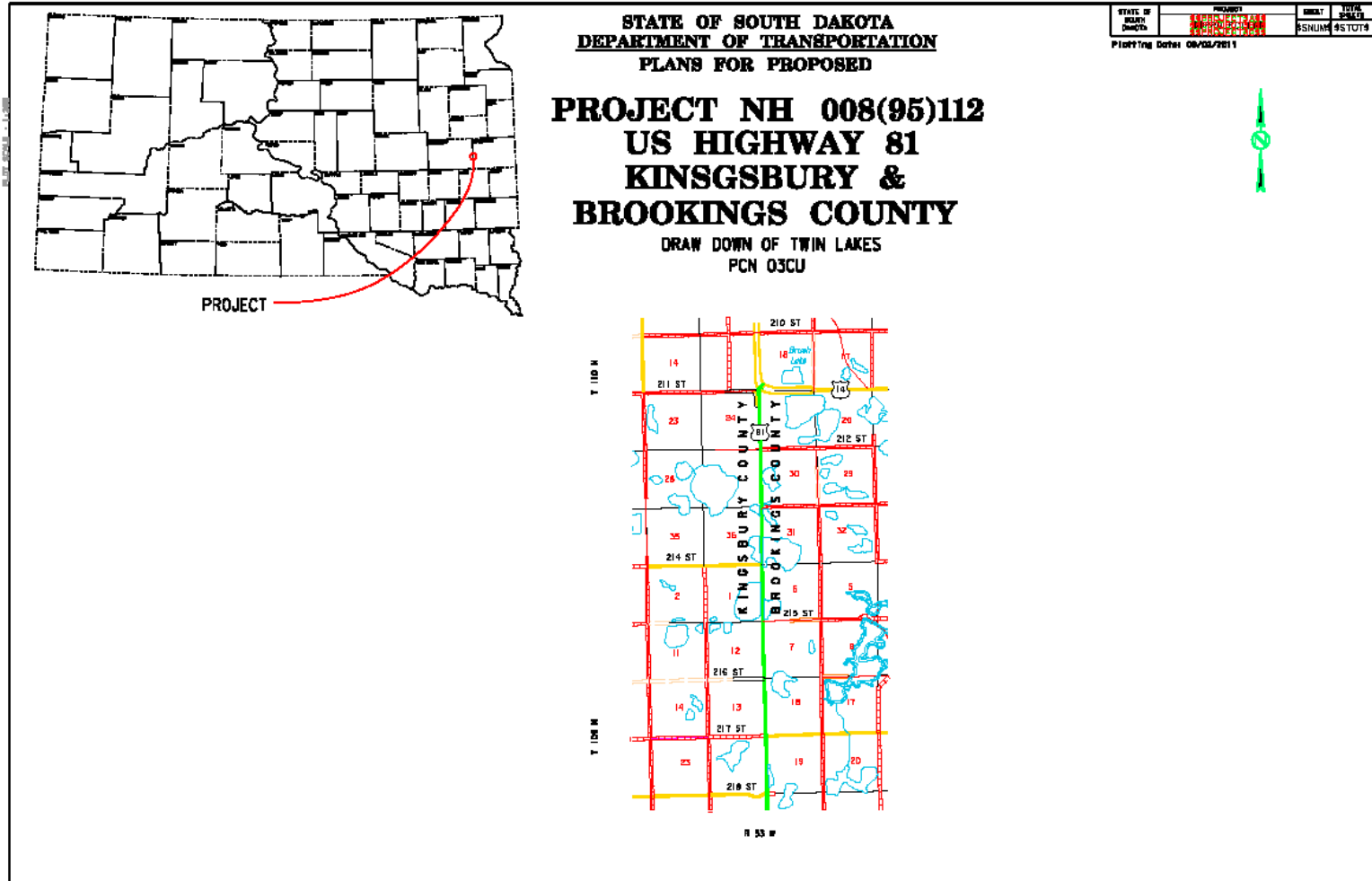
US HIGHWAY 81 SOUTH OF US HIGHWAY 14

Temporary Drawdown of Twin Lakes



PROJECT LOCATION

BANNER



VIDEO

BANNER

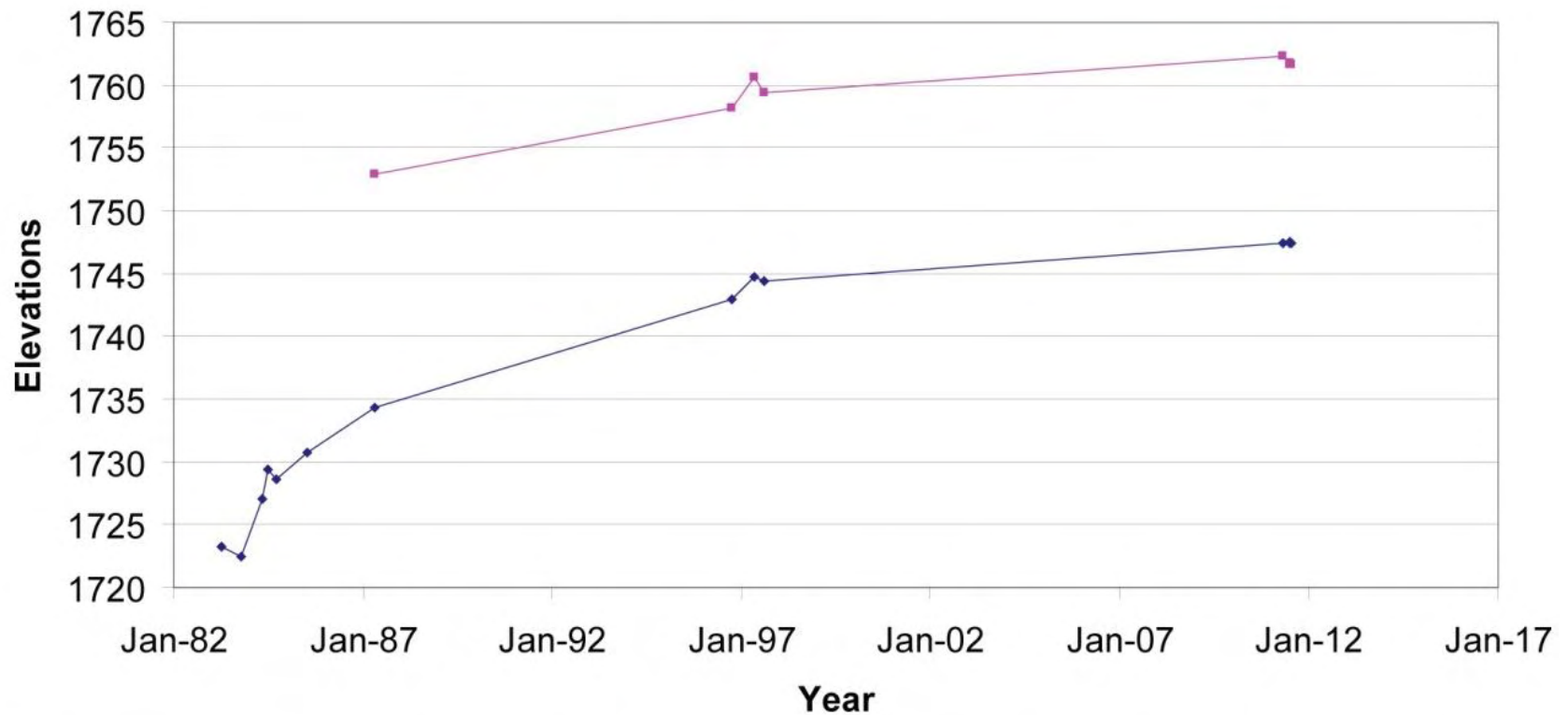


LAKE ELEVATIONS

BANNER



Lake Elevations



—◆— East Sinai - next to outlet culverts —■— Twin Lakes - US81 North side of water, east side of road

LAKE ELEVATIONS CORRESPONDING OVERFLOW RATES

BANNER



Lake Elevations and Corresponding Overflow Rates

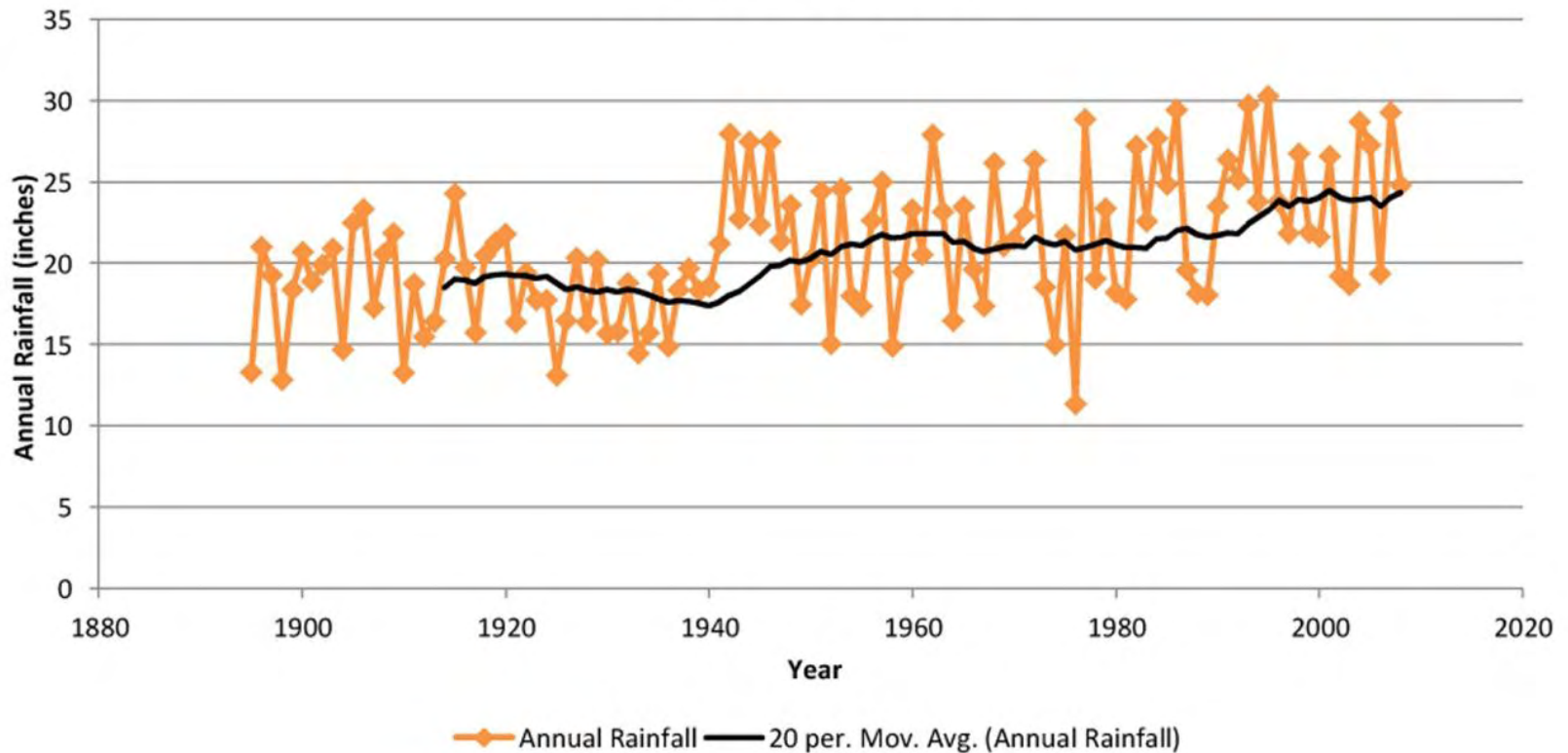
Date	Lake Sinai		Twin Lakes		Comments
	Flow (cfs)	Water Elevation	Flow (cfs)	Water Elevation	
16-Jun-11					4 culverts installed at outlet to Lake Sinai - CR-11
17-Jun-11	76.11	1748.09			Calc. Elev. based on headwater depth measurement
20-Jun-11	50.00	1747.76			Calc. Elev. based on headwater depth measurement
21-Jun-11	90.00	1748.26			Calc. Elev. based on headwater depth measurement
23-Jun-11	65.08	1747.96			Calculated Elevation Based on measured flow
27-Jun-11	58.00	1747.86			Calculated Elevation Based on measured flow
7-Jul-11	37.86	1747.59	20.48	1762.74	Calculated flow Based on measured Elevation
8-Jul-11	36.43	1747.57	19.39	1762.71	Calculated flow Based on measured Elevation
11-Jul-11	30.36	1747.49	18.46	1762.68	Calculated flow Based on measured Elevation
13-Jul-11	27.50	1747.44	15.70	1762.59	Calculated flow Based on measured Elevation
14-Jul-11	30.78	1747.49	9.50	1762.38	Calculated Elevation Based on measured flow
15-Jul-11	30.71	1747.49	17.85	1762.66	Calculated flow Based on measured Elevation
18-Jul-11	27.50	1747.44	17.23	1762.64	Calculated flow Based on measured Elevation
19-Jul-11	27.30	1747.44	9.17	1762.37	Calculated Elevation Based on measured flow
1-Aug-11	17.29	1747.27	6.51	1762.25	Calculated Elevation Based on measured flow
2-Aug-11			12.01	1762.47	Calculated flow Based on measured Elevation

PRECIPITATION

BANNER



**Precipitation Data
SD East Central**

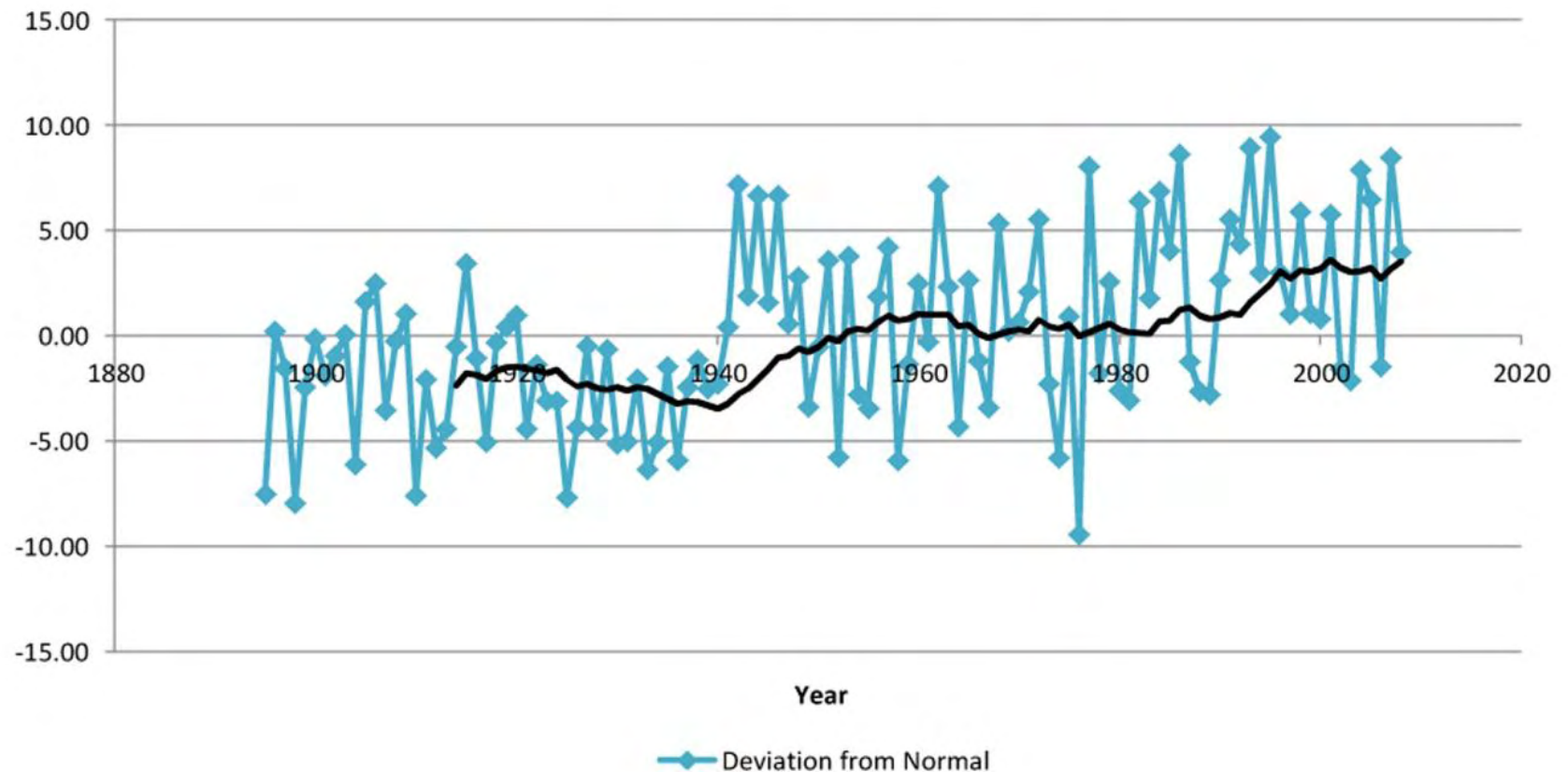


PRECIPITATION

BANNER



Deviation from Normal



WATERSHED ANALYSIS (SWMM)



- Drainage Areas (3 main sub-basins, + downstream)
 - Brush Lake
 - Twin Lakes
 - Lake Sinai
 - Several Downstream of Lake Sinai to Big Sioux River
- Rainfall and Evaporation Information
 - Normal Precipitation
 - Above Normal (2010)
 - Below Normal

WATERSHED ANALYSIS (SWMM)

-CONTINUED

BANNER



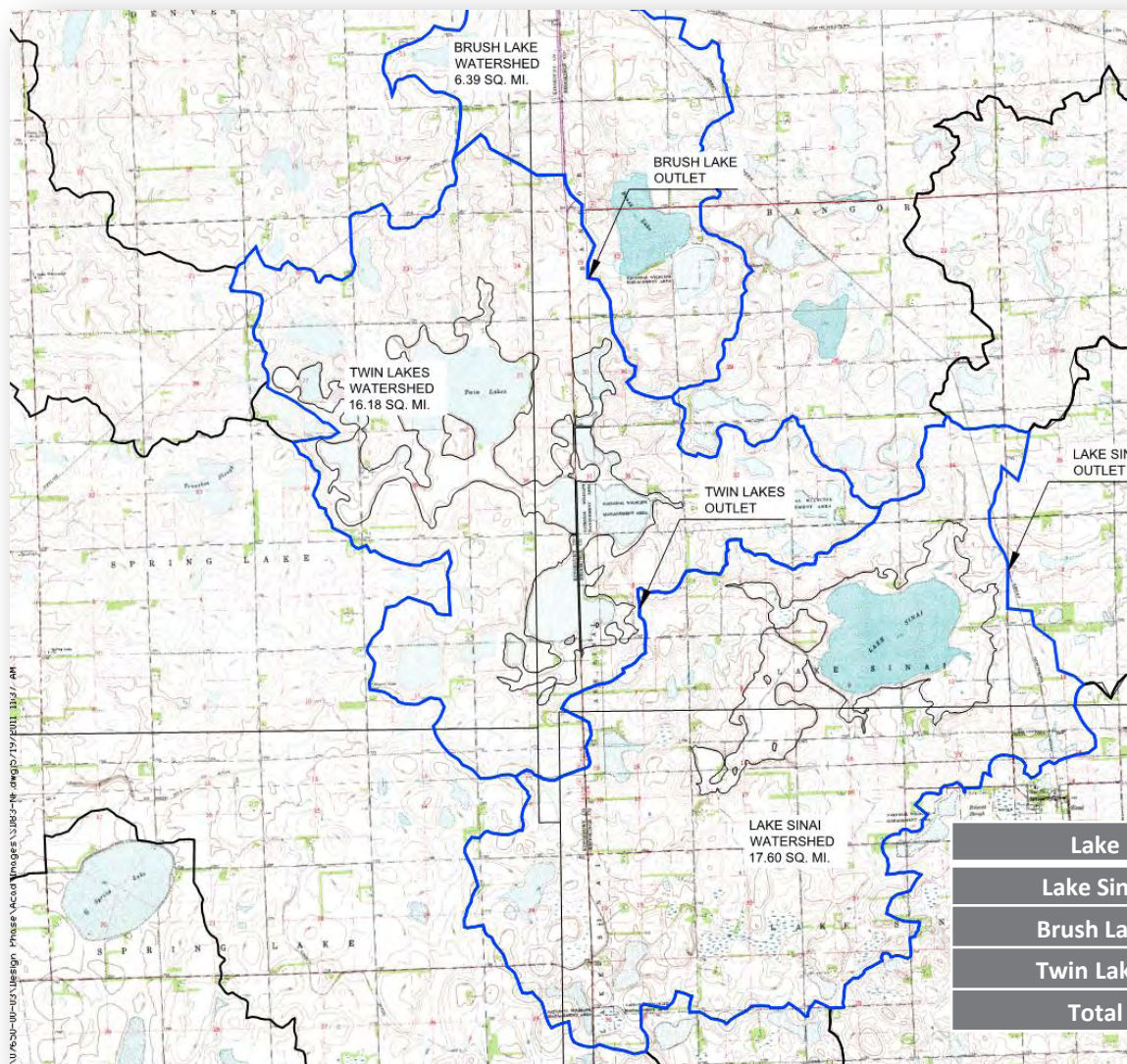
■ Hydraulics

- Outlet Structures and Elevations of Lakes
 - Natural Channels, Culverts
- Areas and Volumes of Lakes
- Drawdown of Twin Lakes
 - Pumps down to a required elevation (i.e. EL. 1759.0)

WATERSHED ANALYSIS (SWMM)

-CONTINUED

BANNER



**Table 1 - Current Lake Elevations (7/19/2011)
(Datum: NAVD88)**

Lake	Water Surface Elevation (ft)	Outlet Elevation (ft)
Lake Sinai	1747.4	1746.3
Twin Lakes	1762.4	1761.6
Brush Lake	1767.3	1767.2

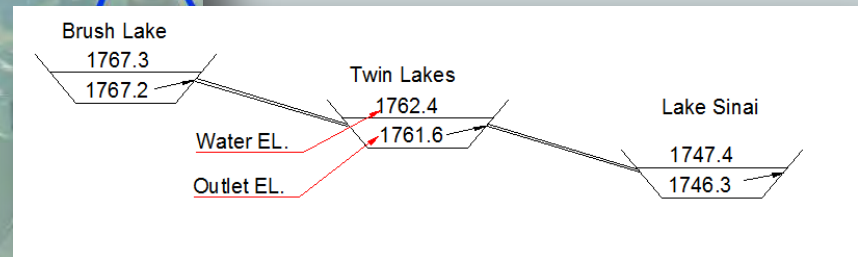
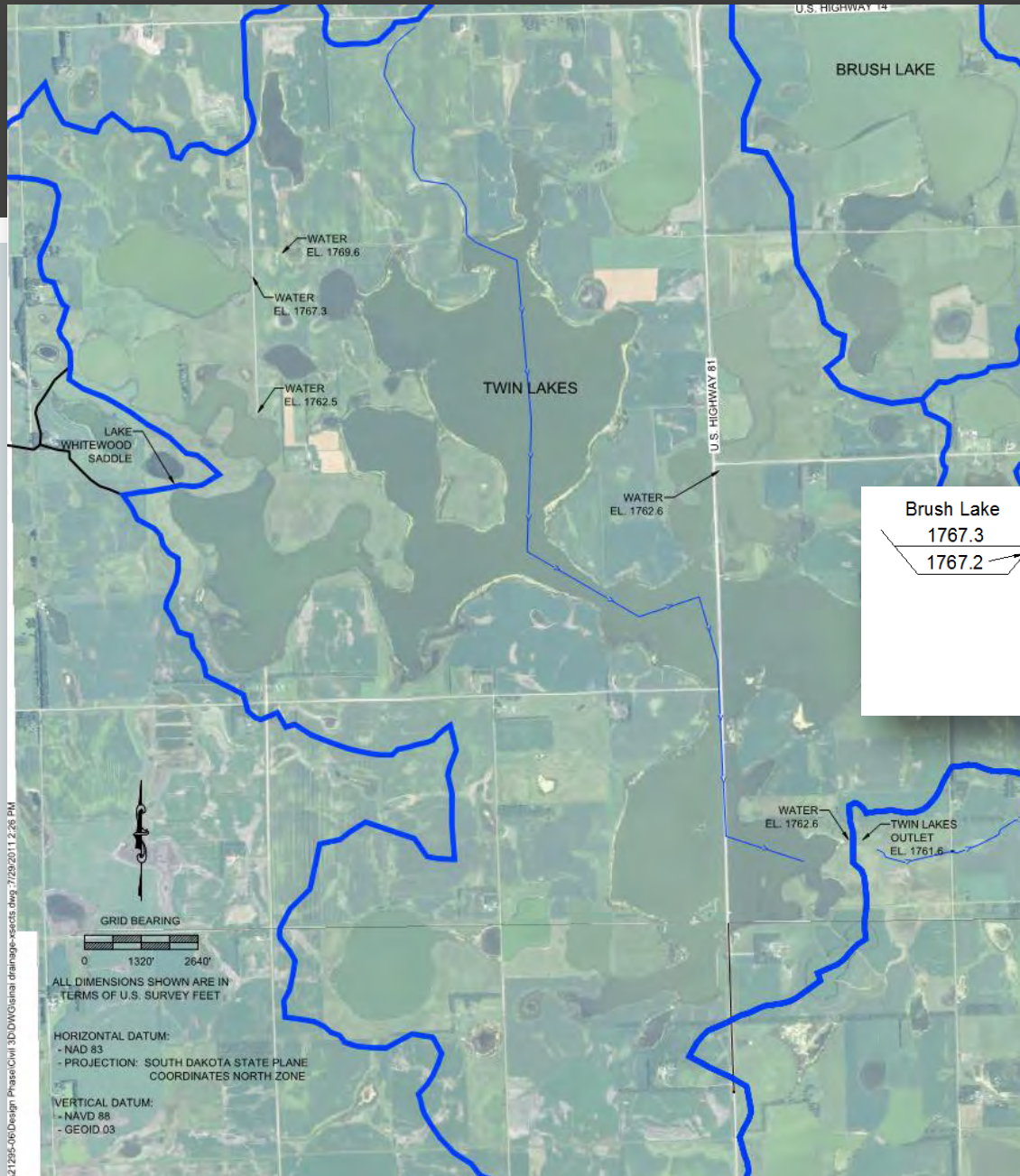
**Table 2 - Current Lake Areas (4/28/2011)
(Datum: NAVD88)**

Lake	Lake Area (aces)	Lake Area (sq. mi.)
Twin Lakes	3145	4.9
Lake Sinai	1976	3.1
Brush Lake	541	0.8

Table 3 – Watershed Areas

Lake	Area (ac)	Area (sq.mi.)
Lake Sinai	11262	17.60
Brush Lake	4092	6.39
Twin Lakes	10358	16.18
Total	25712	40.17

BANNER

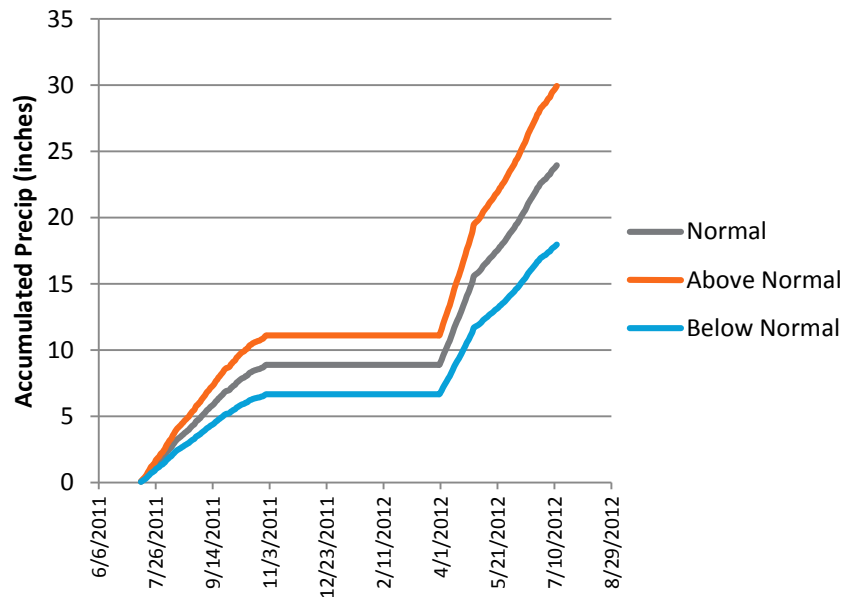


MODEL PRECIPITATION - 2010 VS. NORMAL (USING SDSU RAINGAGE NEAR BROOKINGS)

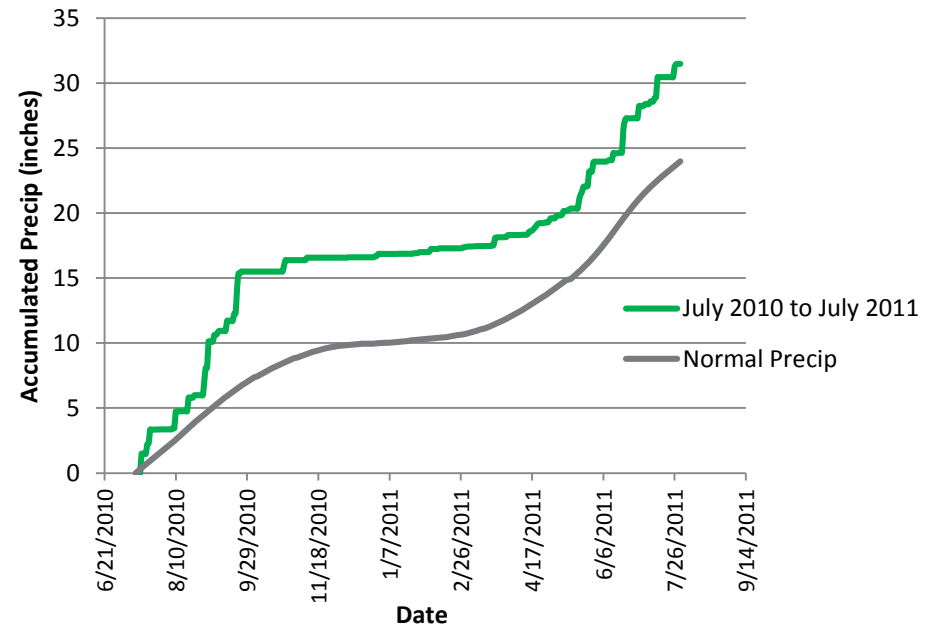
BANNER



Accumulated Precip July - July for Normal, Above Normal, and Below Normal



Accumulated Precip July 2010 - July 2011 vs. Normal

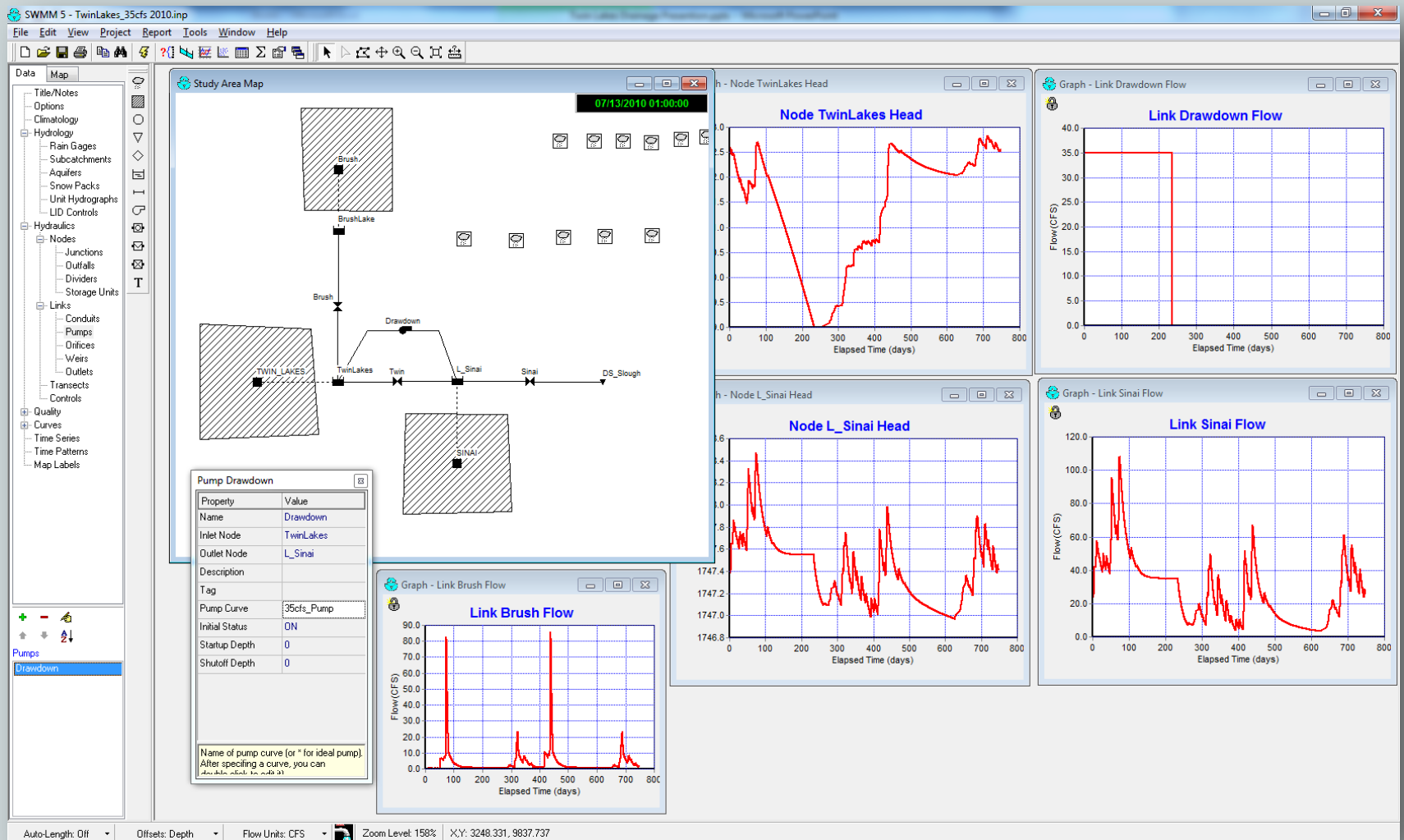


Above Normal Precipitation is 25% more precip and 25% less evaporation than normal
And vice versa for the Below Normal Precipitation

WATERSHED ANALYSIS (SWMM)

- EX. 2YRS OF 2010 PRECIP/EVAP AT 35CFS DRAWDOWN OF TWIN LAKES

BANNER

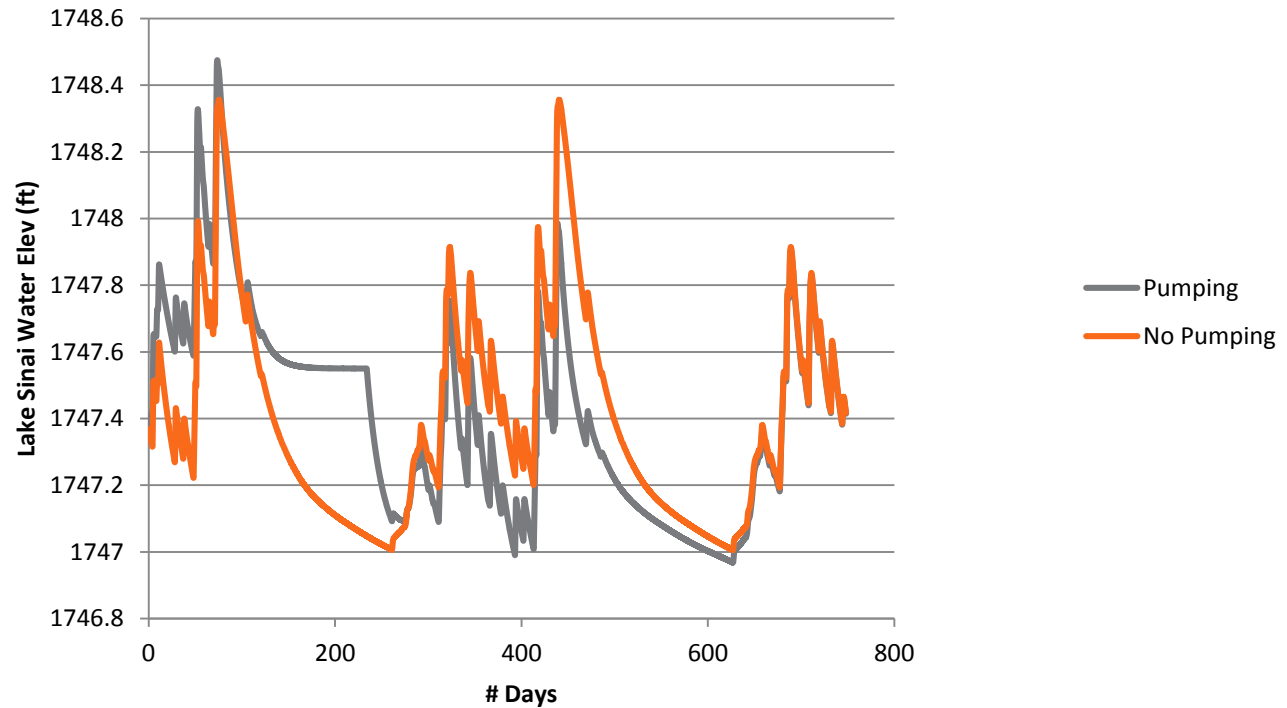


MODEL RESULTS - EXAMPLE

BANNER



Lake Sinai Water Elevation - Pumping vs. No Pumping
(2010 Data - 2yrs in a row)



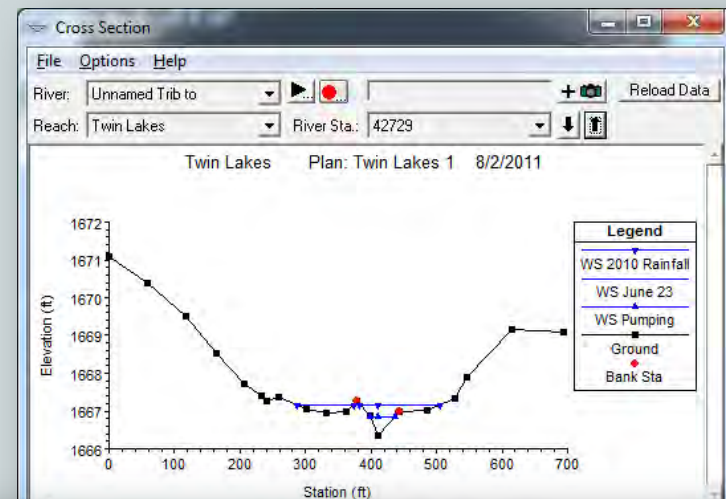
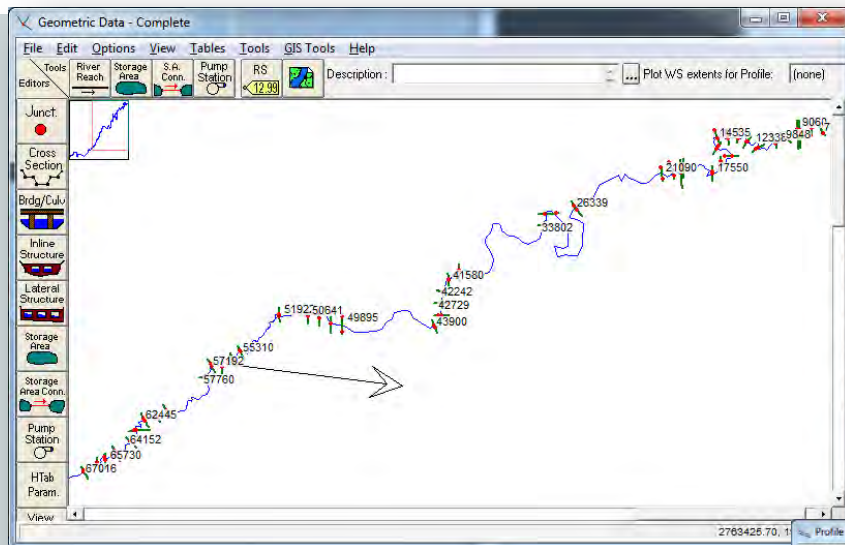
HYDRAULIC ANALYSIS



- Hydraulic analysis downstream of Twin Lakes
 - Input
 - Cross-sections, buildings elevations surveyed
 - HEC-RAS software (developed by USACE)
 - Once a drawdown rate (pump) has been selected, it will be input into the model
 - Output
 - Determine water depths and widths of discharges
 - Map the inundation levels on surveyed cross sections
 - In between cross sections is estimated

HYDRAULIC ANALYSIS

BANNER



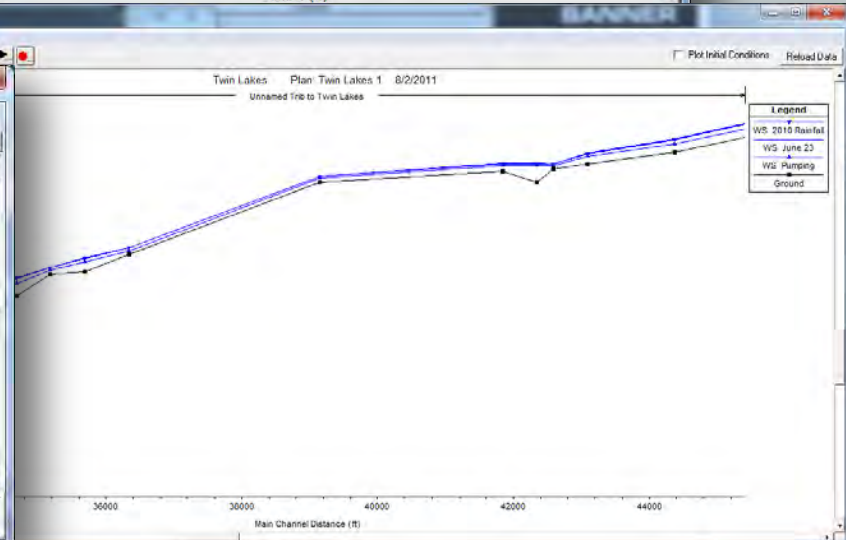
Profile Output Table - Standard Table 1

File Options Std. Tables Locations Help

HEC-RAS Plan: TwinLakes1 River: Unnamed Trib to Reach: Twin Lakes Reload Data

Reach	River Sta	Profile	Q Total (cfs)	Min Ch El (ft)	W.S. Elev (ft)	Crit W.S. (ft)	E.G. Elev (ft)	E.G. Slope (ft/ft)	Vel Chnl (ft/s)	Flow Area (sq ft)	Top Width (ft)	Froude # Chl
Twin Lakes	50641	June 23	90.00	1679.67	1680.88	1680.32	1680.89	0.000757	0.61	168.43	449.60	0.16
Twin Lakes	50641	Pumping	27.00	1679.67	1680.53	1680.06	1680.53	0.000658	0.52	65.63	191.66	0.14
Twin Lakes	50641	2010 Rainfall	108.00	1679.67	1680.96	1680.36	1680.96	0.000785	0.69	204.52	533.80	0.17
Twin Lakes	50145	June 23	90.00	1679.06	1679.61	1679.61	1679.70	0.042695	2.48	37.96	191.93	1.02
Twin Lakes	50145	Pumping	27.00	1679.06	1679.40	1679.40	1679.48	0.050210	2.70	12.43	80.98	1.11
Twin Lakes	50145	2010 Rainfall	108.00	1679.06	1679.65	1679.65	1679.74	0.048457	2.65	46.46	249.80	1.09
Twin Lakes	49895	June 23	90.00	1677.40	1679.65		1679.65	0.000002	0.07	1412.06	834.10	0.01
Twin Lakes	49895	Pumping	27.00	1677.40	1679.41		1679.41	0.000000	0.02	1212.59	834.10	0.00
Twin Lakes	49895	2010 Rainfall	108.00	1677.40	1679.70		1679.70	0.000002	0.08	1455.64	834.10	0.01
Twin Lakes	49400	June 23	90.00	1678.72	1679.64	1679.19	1679.65	0.000325	0.40	234.57	571.49	0.10
Twin Lakes	49400	Pumping	27.00	1678.72	1679.41	1679.04	1679.41	0.000323	0.25	109.07	491.77	0.09
Twin Lakes	49400	2010 Rainfall	108.00	1678.72	1679.69	1679.70	1679.70	0.000324	0.42	263.93	579.99	0.11

Total flow in cross section.



DOWNSTREAM OF LAKE SINAI

BANNER

