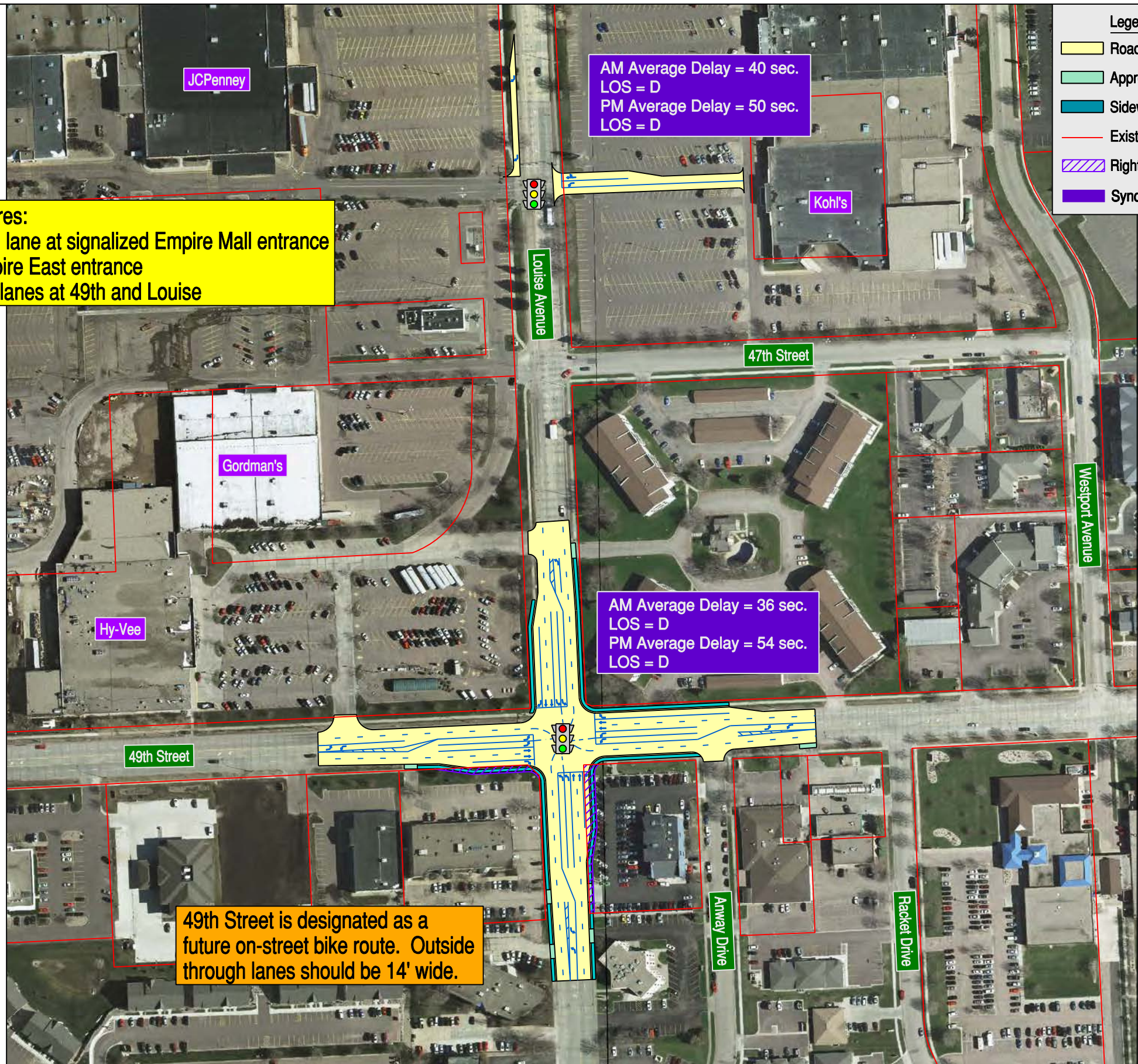


- Option Features:**
- Add right turn lane at signalized Empire Mall entrance
 - Modified Empire East entrance
 - Dual left turn lanes at 49th and Louise



Legend

- Roadway Construction
- Approaches
- Sidewalk
- Existing Right-of-Way
- Right-of-Way to be Acquired
- Synchro Intersection Capacity Summary

Scale in Feet
0 100 200

Signalized Intersection

49th Street is designated as a future on-street bike route. Outside through lanes should be 14' wide.

Drawn By: B. Miller
Date: 2-6-2012
Checked By: J. Unruh
Date: 2-6-2012
Revisions: 3-9-2012



Louise Avenue at 49th Street
Improvement Option

I-29 Exit 77 (41st Street) Crossroad Corridor Study

Sioux Falls, SD

Figure
6-5