

# SD Hwy 34 Public Meeting

Project NH 0034(160)386, PCN 02R6

from the N US81 Jct to Washington Avenue

Project NH 0034(163)387, PCN 03TC

from NE 2<sup>nd</sup> Street to the beginning of Divided Section

January 28, 2014

Bill Moran, PE

HR Green, Inc.

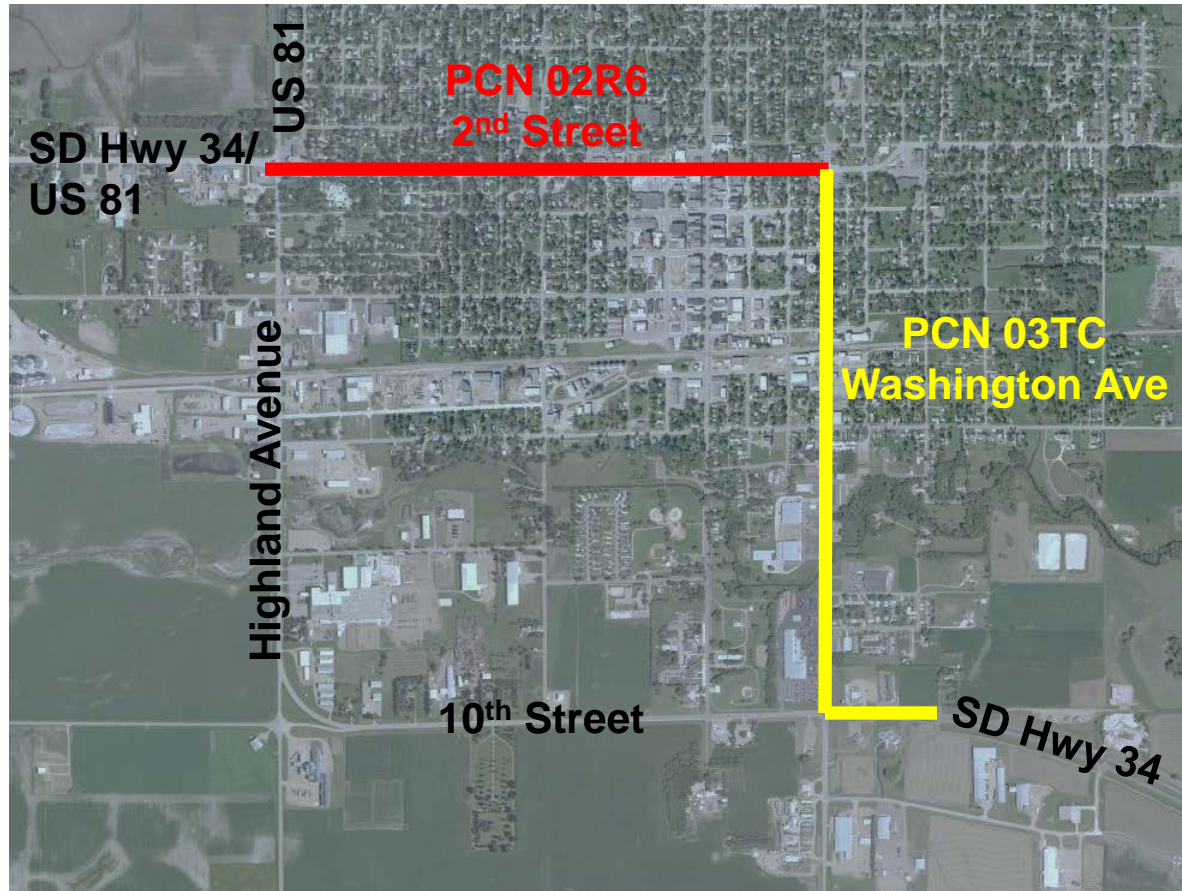


# Why Are We Here?

- Involve Public in Design Process
- Review
  - Project Scope
  - Current Layout
  - Schedule
- Gather Public Input
  - Questions
  - Comments



# Project Map



# Background Information

## PCN 02R6 – 2<sup>nd</sup> Street

- Constructed in 1972
- 2012 ADT = 6644
- 2032 Projected ADT = 8464
- 5.7% Average Truck Traffic

## PCN 03TC – Washington Ave

- Constructed in 1978
- 2012 ADT = 7047
- 2032 Projected ADT = 8979
- 6.5% Average Truck Traffic

# Accident Data

## **PCN 02R6 – 2<sup>nd</sup> Street**

Jan 2010 through Dec 2012:

- 12 Total Crashes
  - 8 Failure to Yield
  - 2 Bicycle related
  - 2 Other

Weighted Accident Rate = 2.47

## **PCN 03TC – Washington Ave**

Jan 2010 through Dec 2012:

- 15 Total Crashes
  - 8 Failure to Yield
  - 1 Fixed Object
  - 6 Other

Weighted Accident Rate = 2.37

**Statewide Crash Rate Average = 2.41**  
**(Urban Principal Arterial)**



---

# Highway Deficiencies

---

- Deteriorated Pavement
- Drainage
- ADA Accessibility



# Project Scope

- Grading
  - Curb and Gutter
  - Storm Sewer
  - PCC Surfacing
  - Intersection Improvements
  - Retaining Walls
  - Sidewalk
  - Lighting
  - Utility Coordination
- Not anticipating modifying Silver Creek box culvert that was reconstructed in 2008

# Signals

## PCN 02R6 – 2<sup>nd</sup> Street

- Intersection with Egan Ave
  - Install Pedestrian push button poles and countdown timers
- Intersection with Washington Ave
  - Relocate signal pole in SE quadrant
- Signed Pedestrian Crosswalks

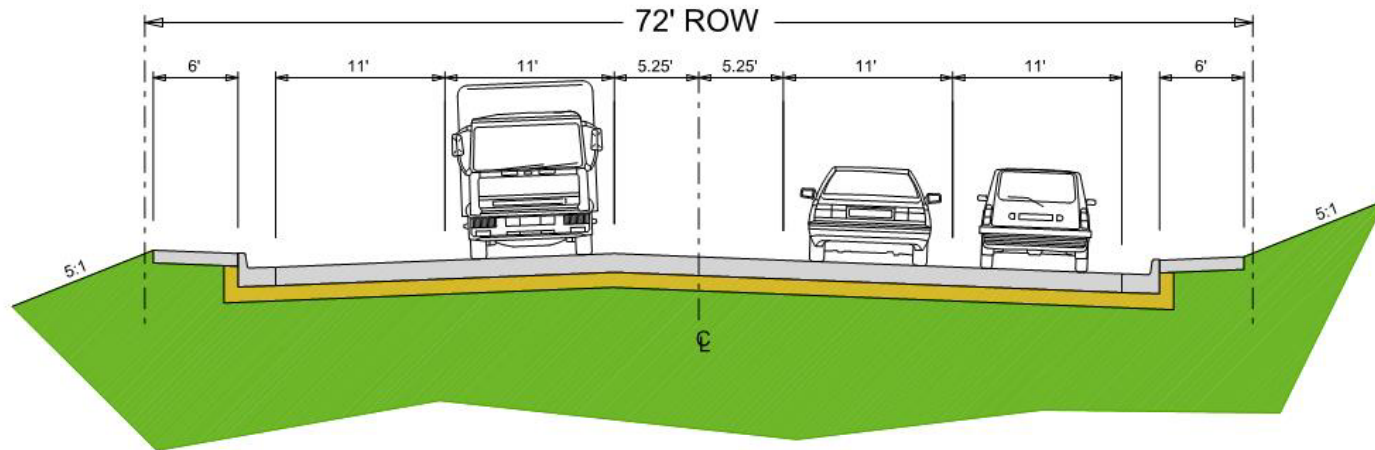
## PCN 03TC – Washington Ave

- Railroad Crossing Signal
- Signed Pedestrian Crosswalks





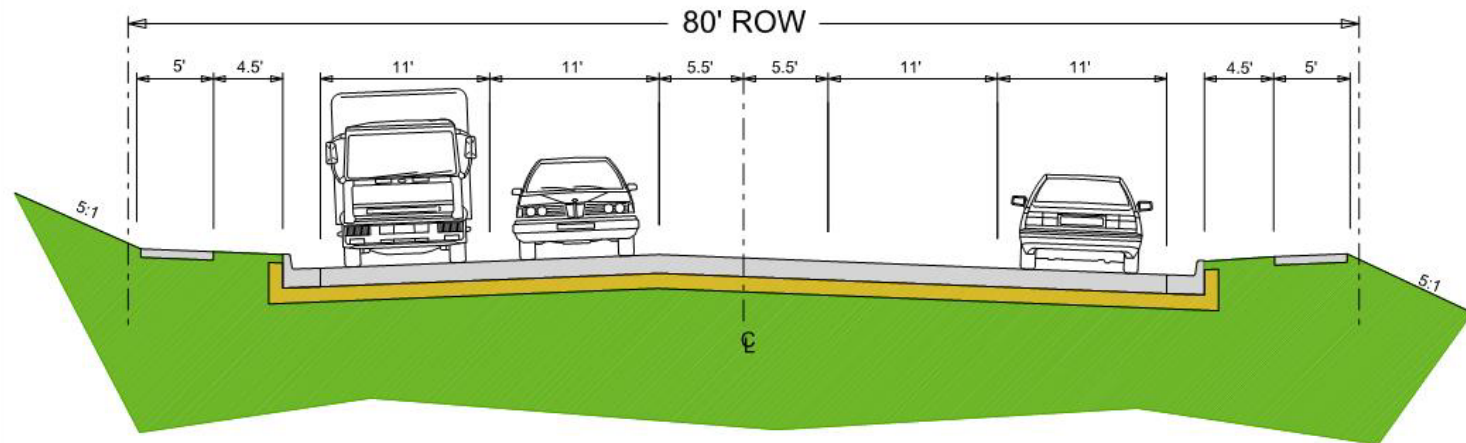
# Proposed Typical Section



## PCN 02R6 – 2<sup>nd</sup> Street (Highland Ave to Blanche Ave)

- Two 11-foot lanes in each direction
- One 10.5-foot shared, center turn lane
- Attached 6-foot sidewalk

# Proposed Typical Section

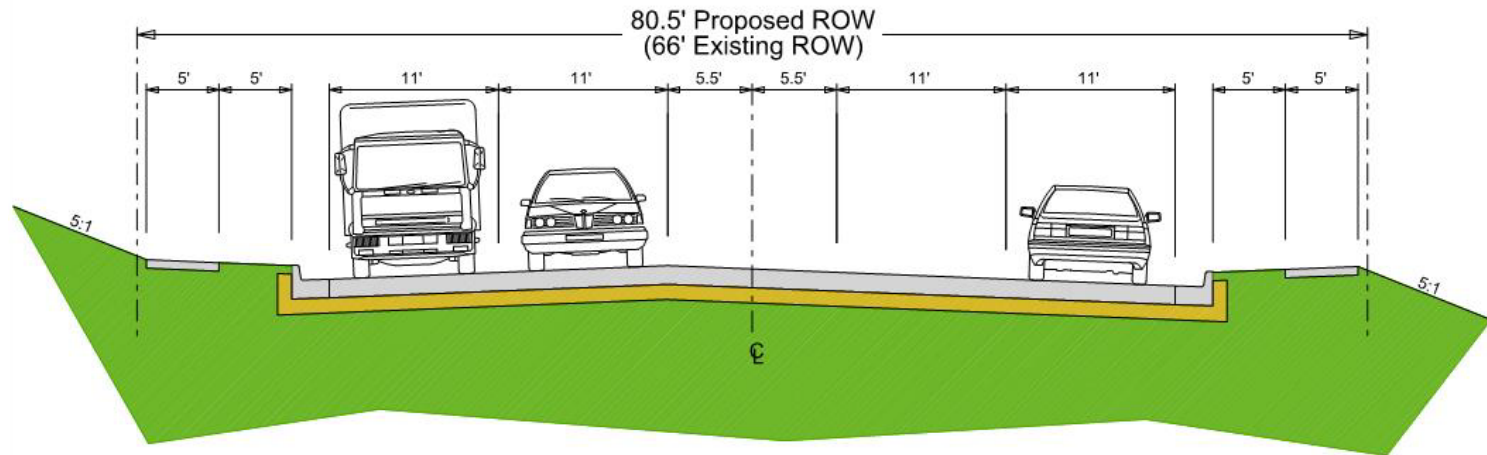


PCN 02R6 – 2<sup>nd</sup> Street  
(Blanche Ave to Washington Ave)

PCN 03TC – Washington Ave  
(2<sup>nd</sup> Street to 4<sup>th</sup> Street)

- Two 11-foot lanes in each direction
- One 11-foot shared, center turn lane
- 4.5-foot grass boulevard, 5-foot sidewalk

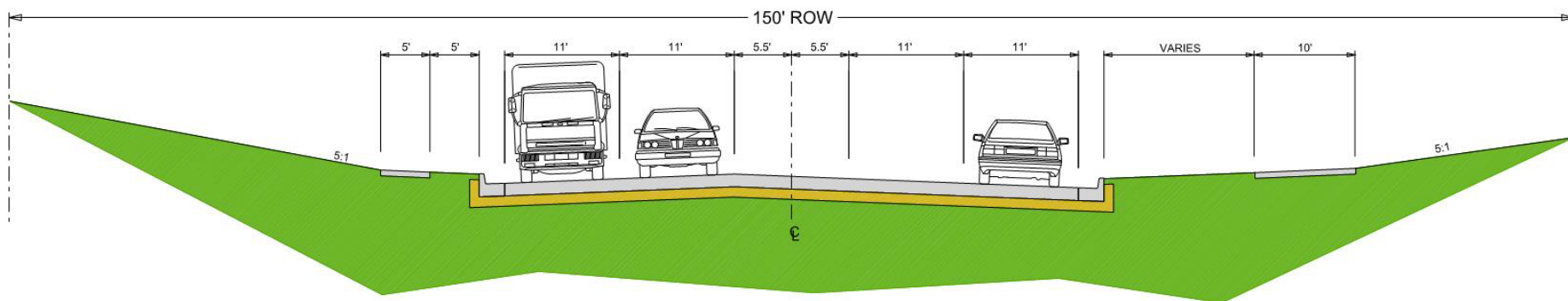
# Proposed Typical Section



## PCN 03TC – Washington Ave (4<sup>th</sup> Street to 10<sup>th</sup> Street)

- Two 11-foot lanes in each direction
- One 11-foot shared, center turn lane
- 5-foot grass boulevard, 5-foot sidewalk

# Proposed Typical Section



## PCN 03TC – SD Highway 34 (Washington Ave to divided section)

- Two 11-foot lanes in each direction
- One 11-foot shared, center turn lane
- 5-foot grass boulevard, 5-foot sidewalk on north side
- Variable boulevard, 10-foot shared use trail on south side

# Right of Way

## PCN 02R6 – 2<sup>nd</sup> Street

- Existing Width
  - 72-feet from Highland Ave to Union Ave
  - Varies from 72-feet to 80-feet between Union Ave and Blanche Ave
  - 80-feet from Blanche Ave to Washington Ave
- Temporary Construction Easements
- Permanent Easements

## PCN 03TC – Washington Ave

- Existing Width
  - 80-feet from NE 2<sup>nd</sup> Street to 4<sup>th</sup> Street
  - 66-feet from 4<sup>th</sup> Street to 10<sup>th</sup> Street
    - Purchase 14.5-feet of ROW on SD34
  - 150-feet from Washington Ave to the beginning of the divided section
- Temporary Construction Easements
- Permanent Easements

# Encroachments

- Encroachments – Private Property located within the Public Right of Way
  - Federal Highway Regulations
  - Safety
  - Statewide Consistency
- Existing Encroachments
  - Signs
  - Landscaping
  - Fences
  - Trees
- Property Owners with Encroachments will be notified



---

# Construction Sequencing

---

- Maintain traffic head-to-head
- Constructed in phases
- Detour route for highway through traffic



---

# Environmental, Social & Economic Impacts

---

- Project will comply with all state and federal environmental regulations
  - Involves 4(f) / 6(f) with City Park property
- See Handout for more information





# Utility Coordination

- Existing utilities may need to relocate facilities
- Utility Companies would negotiate easements with landowners as needed
- City of Madison will be doing a concurrent project to replace water main and sanitary sewer



# Access Management

- To provide safe, efficient access to streets and highways
- Restrict number of direct accesses to major surface streets
- Provides adequate spacing between driveways and cross roads or signals



# Landowner Meetings

- Held with individual affected landowners
  - Driveway locations/widths
  - Fence
  - Drainage
  - Trees
  - Encroachments
  - Retaining walls
  - ROW needs
- Landowners will be contacted by SDDOT to schedule an appointment



# Tentative Project Schedule

Public Meeting

January 28, 2014

	<u>PCN 02R6 - 2<sup>nd</sup> Ave</u>	<u>PCN 03TC – Washington Ave</u>
Preliminary Design	November 2013	Mar-Aug 2014
Landowner Meetings	April 2014	November 2014
Final Design	May-Oct 2014	Dec 2014-July 2015
ROW / Easement Acquisition	2015	2016
Construction	2016	2017

---

# Questions or Comments?

---

Please send Comment Forms or Letters by  
**February 11, 2014** to:

Bill Moran  
HR Green, Inc.  
431 North Phillips Ave, Suite 400  
Sioux Falls, SD 57501  
Email: [wmoran@hrgreen.com](mailto:wmoran@hrgreen.com)

Public Meeting Information

<http://sddot.com/dot/publicmeetings>

