



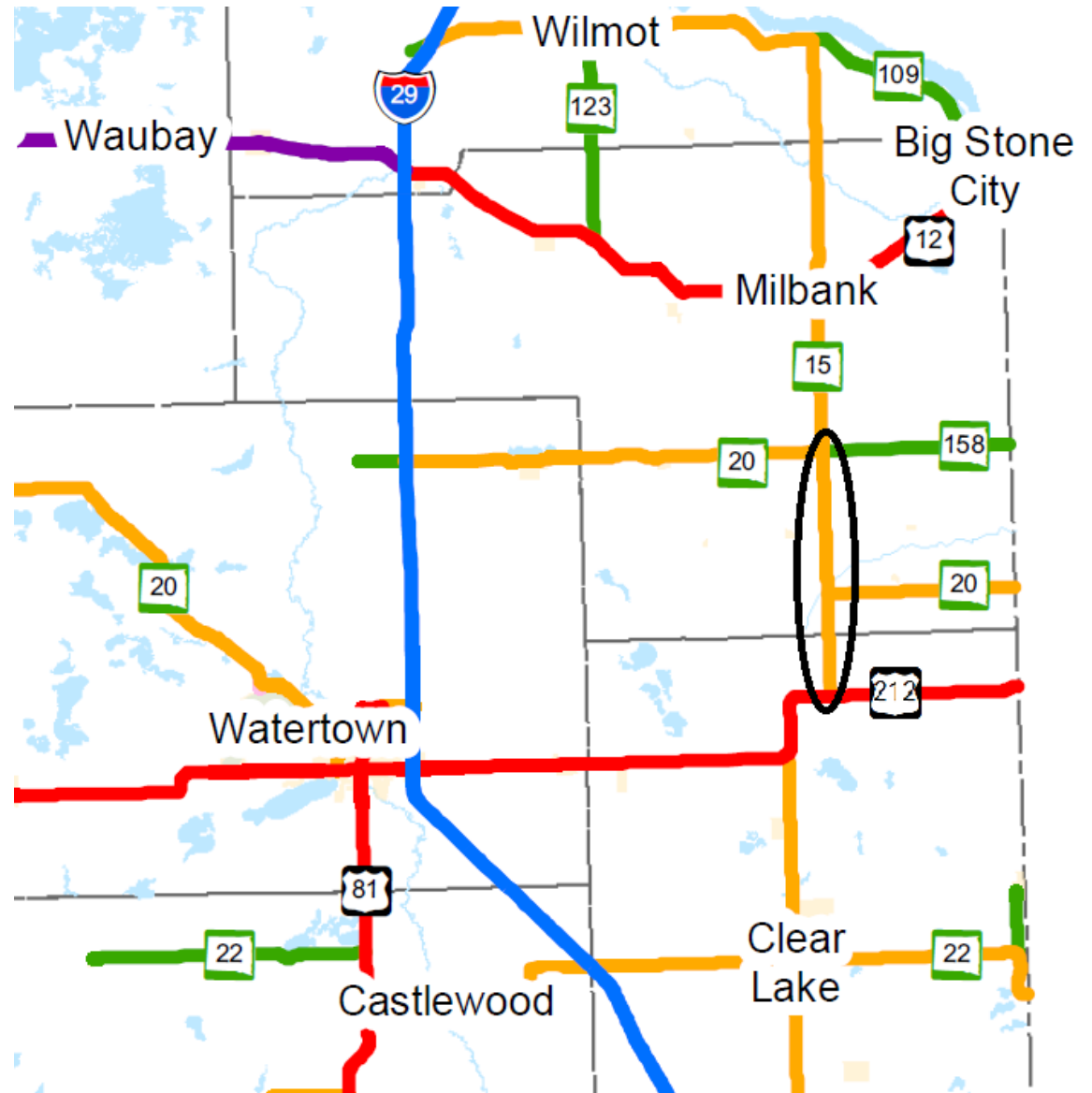
# PUBLIC MEETING

HIGHWAY SD15 / SD20  
FROM US212 12 MILES NORTH  
DEUEL AND GRANT COUNTIES

CARY CLELAND  
ROAD DESIGN SUPERVISOR  
AUGUST 29, 2016

# PROJECT LOCATION

**SD15** From the  
intersection of **US212**  
to 500' north of  
the junction with  
**SD20/SD158**



# WHY ARE WE HERE?

## **A little bit about our process**

## **An overview of the project**

- Why it's needed
- The plan
- The schedule

## **Gather public input**

# WHAT ARE THE STEPS?

## 4 Phases:

- Planning
- Design
- Right-of-way Acquisition
- Construction

# PLANNING PHASE

**Determine a plan  
by evaluating  
existing  
condition of  
roadways,  
Federal  
requirements,  
and available  
funds**



# DESIGN PHASE

## Create Design for a Roadway Based on:

- Traffic & Roadway Data
- Engineering Design Standards
- FHWA Guidance
- Public Input



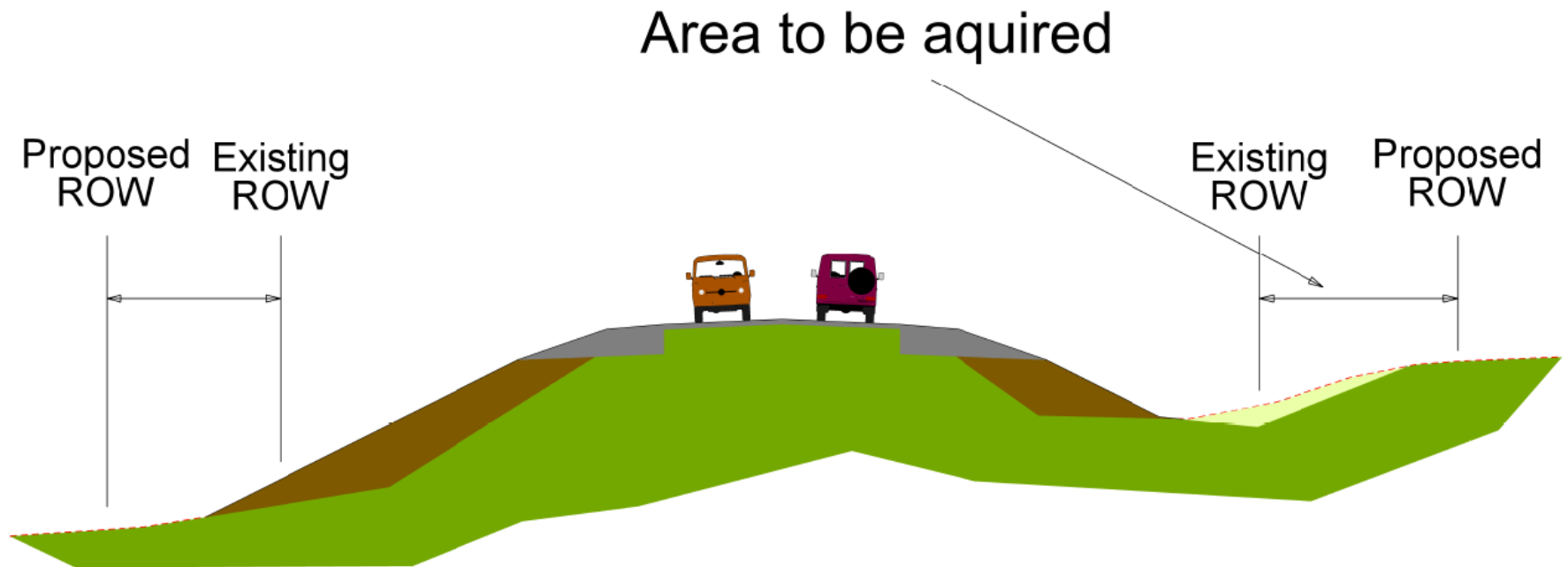
# DESIGN PHASE

## Landowner Meetings

### **Your opportunity to:**

- Learn how your property may be affected by a project
- Discuss special circumstances associated with your property
- Understand your rights and responsibilities

# RIGHT-OF-WAY ACQUISITION PHASE





# CONSTRUCTION PHASE

**SDDOT  
engineering staff  
will be present on-  
site during  
construction**



# BACKGROUND INFORMATION

**Mill & Overlay  
2010**

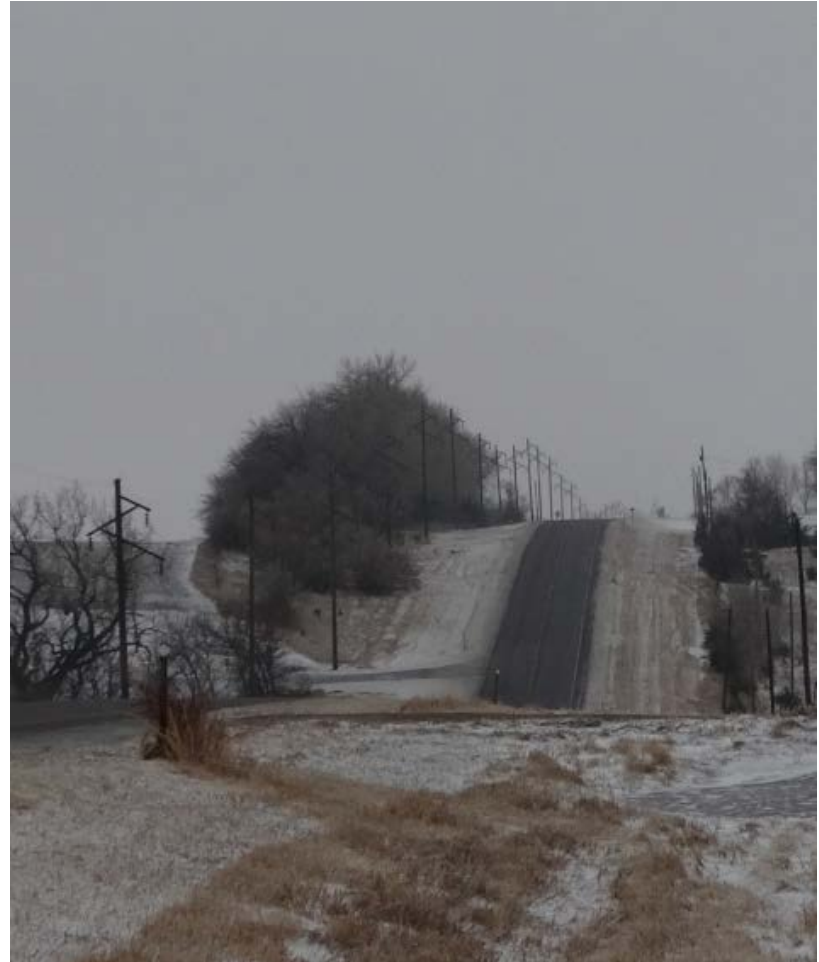
**Grading 1939 to  
1941**

**Most structures  
built 1920 to 1941**



# OPPORTUNITIES TO IMPROVE SAFETY

**Vertical Curves  
(Hills and valleys)  
Narrow Shoulders**



# CRASHES FROM 2011 TO 2015

**Statewide Crash Rate Rural Minor Arterial = 1.78**

**SD20 Crash Rate = 0.729**

**SD15 Crash Rate = 3.66**

**4 Injury Crashes**

**6 Run off the Road Crashes**

**17 Total Crashes**

# TRAFFIC

**The amount and  
type of traffic  
determines  
design**

**2015 ADT SD20 = 1784**

**2040 Projected = 2364**

**2015 ADT SD15 = 1154**

**2040 Projected = 1241**



# BRINGING ALL THE INFORMATION TOGETHER

**This safety funded project was originally programmed due to:**

- lack of shoulders
- high number of run off the road crashes

**During the planning phase we also determined that:**

- all pipe, bridges, and boxes need to be replaced
- hill flattening is needed to lengthen passing zones

**Reconstruction will be best use of funds**

# WHAT'S THE PLAN?

**Full reconstruction of roadway**

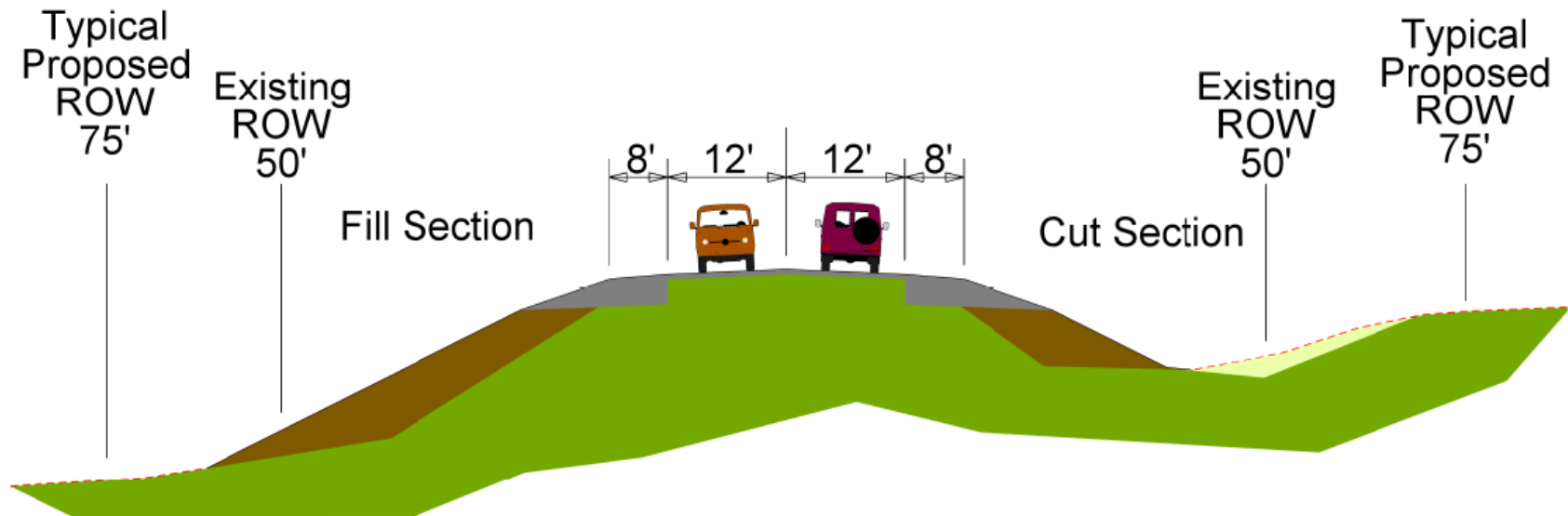
**Replace all pipe culverts, box culverts, and bridges**

**Gravel surfacing with dust control treatment (final surfacing the following year)**

**Widen shoulders**



# PROPOSED ROADWAY





# ACCESS MANAGEMENT (ENTRANCES)

**To provide safe, efficient access to  
streets and highways**

**Limit number of direct accesses to  
major roadways**

**Safe locations**

# ENCROACHMENTS



**What are they?**

**Examples:**

- **Signs**
- **Private Use (Parking)**
- **Landscaping**

**Regulations & Safety**

**Owners will be notified**

# PUBLIC UTILITIES



**Some may need to be relocated**

**Owners may be contacted by utility company**

# PRIVATE UTILITIES?



**Any known private  
utilities?**

**Contact SDDOT**

# ENVIRONMENTAL, SOCIAL, AND ECONOMIC CONCERNS

## **NEPA (National Environmental Policy Act of 1969)**

- **Social**
- **Economic**
- **Environmental Concerns**
- **Public Involvement**

**Federal Funding Mandates Compliance**

**See Handout for more information**

# ENVIRONMENTAL, SOCIAL, AND ECONOMIC CONCERNS



## **Section 4(f) Property**

- **Historic sites**
- **Parks and recreation**
- **Wildlife refuges**

## **Section 106**

- **Historic & archaeological properties**
- **Cultural survey will be completed**

## **Contaminated materials**

- **None identified to date**

## **Any Known Locations?**

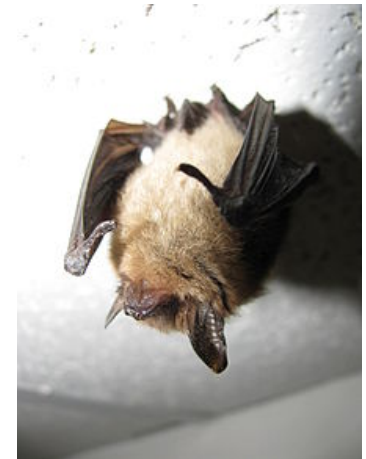


# ENVIRONMENTAL, SOCIAL, AND ECONOMIC CONCERNS

## Threatened and Endangered Species

- Mammals: Northern Long-eared Bat
- Birds: Rufa Red Knot
- Invertebrate: Poweshiek Skipperling, Dakota Skipper
- Fish: Topeka Shiners

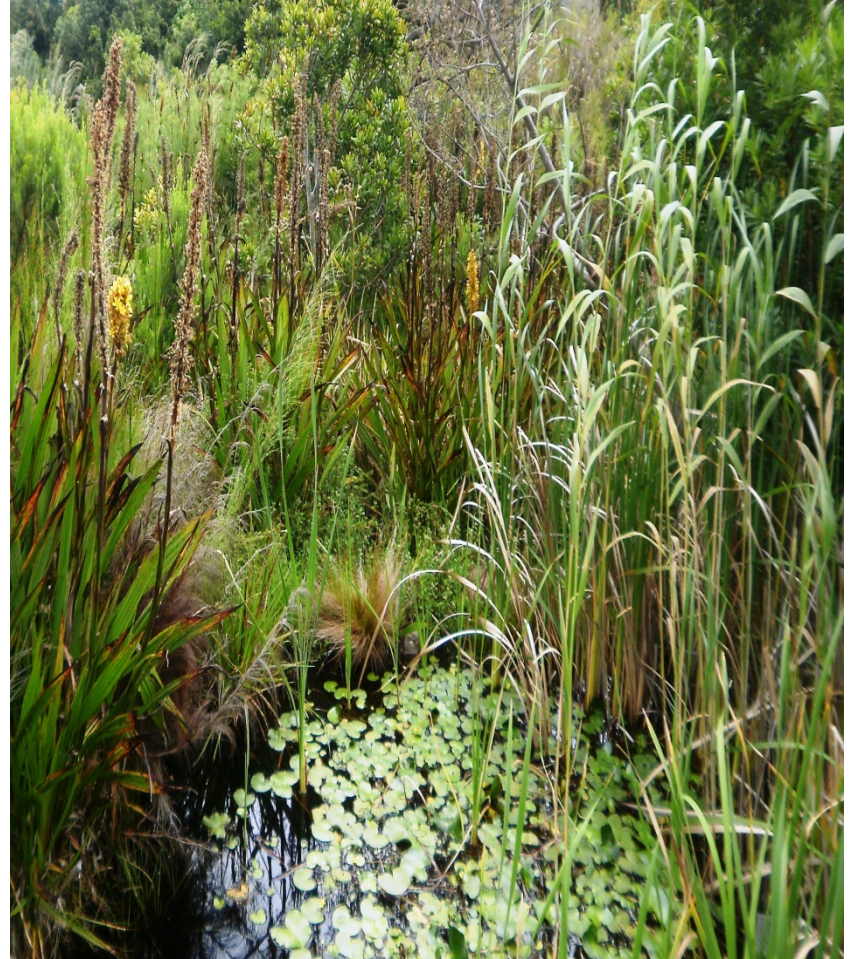
## Efforts to avoid adverse impacts



# ENVIRONMENTAL, SOCIAL, AND ECONOMIC CONCERNS

## Wetlands

- **Federal Regulations**
- **Consultant will Develop Wetland Impact Determination**
- **Wetland Mitigation Program**
- **Interested? Fill Out Wetland Mitigation Registry Form**





# WHERE WILL TRAFFIC GO DURING CONSTRUCTION?

**Road will be closed**

**Local traffic and emergency vehicle  
access maintained**

**Car traffic detoured on local roads**

**Truck traffic detoured to state  
highways**

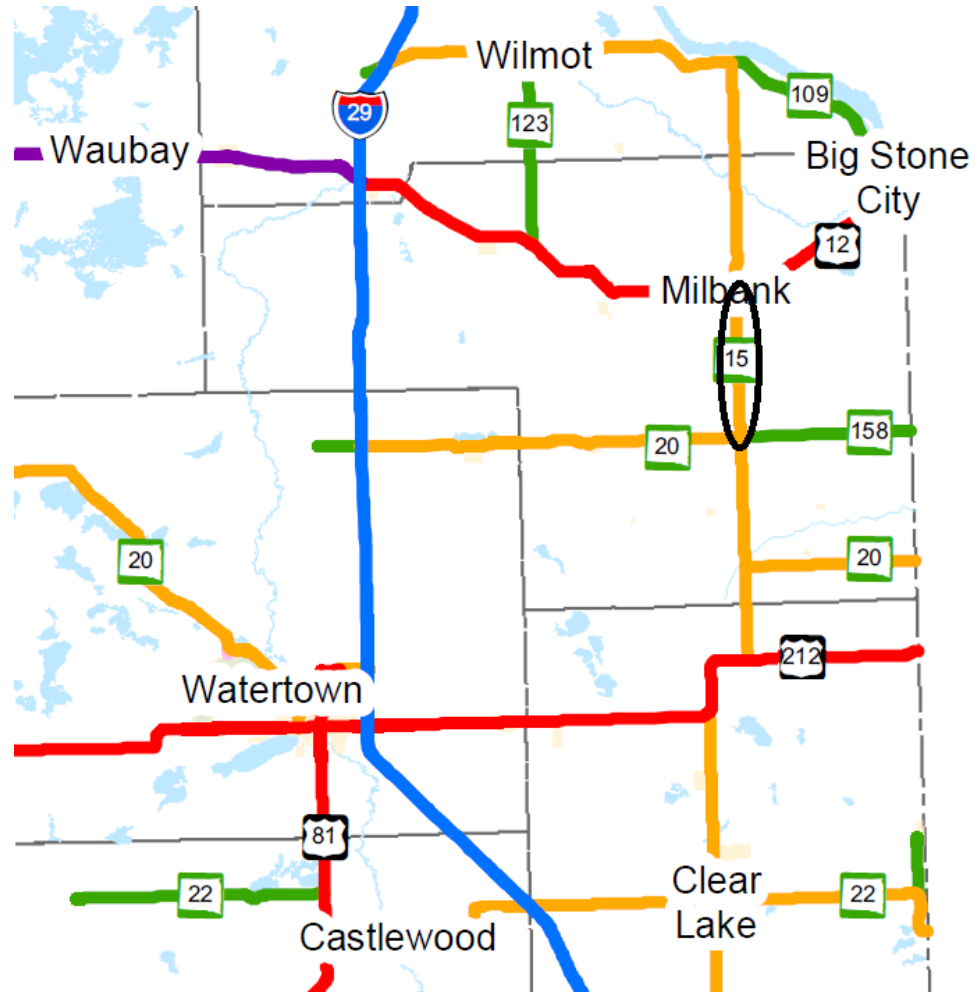
# TENTATIVE PROJECT SCHEDULE

<b>Landowner Meetings</b>	<b>Summer 2017</b>
<b>Complete Design Phase</b>	<b>Spring 2018</b>
<b>ROW Acquisition Phase</b>	<b>Summer 2018</b>
<b>Construction Phase</b>	<b>Spring 2020</b>
<b>Final Surfacing</b>	<b>Spring 2021</b>
<b>Estimated Cost of Construction</b>	<b>\$19.331 Million</b>
<b>Estimated Cost of Final Surfacing</b>	<b>\$5.147 Million</b>

# FUTURE PROJECT TO THE NORTH

## Project Limits

**SD15** From the junction with **SD20/SD158** to **Milbank**



# QUESTIONS OR COMMENTS

**Please Submit Questions or Comments by  
September 12, 2016 to:**

**Megan Steever**

**South Dakota Department of Transportation  
Sioux Falls Area Office  
5316 West 60<sup>th</sup> Street North  
Sioux Falls, SD 57107  
[Megan.Steever@state.sd.us](mailto:Megan.Steever@state.sd.us)**

**Public Meeting Information @**

**<http://sddot.com/dot/publicmeetings/default.aspx>**

