

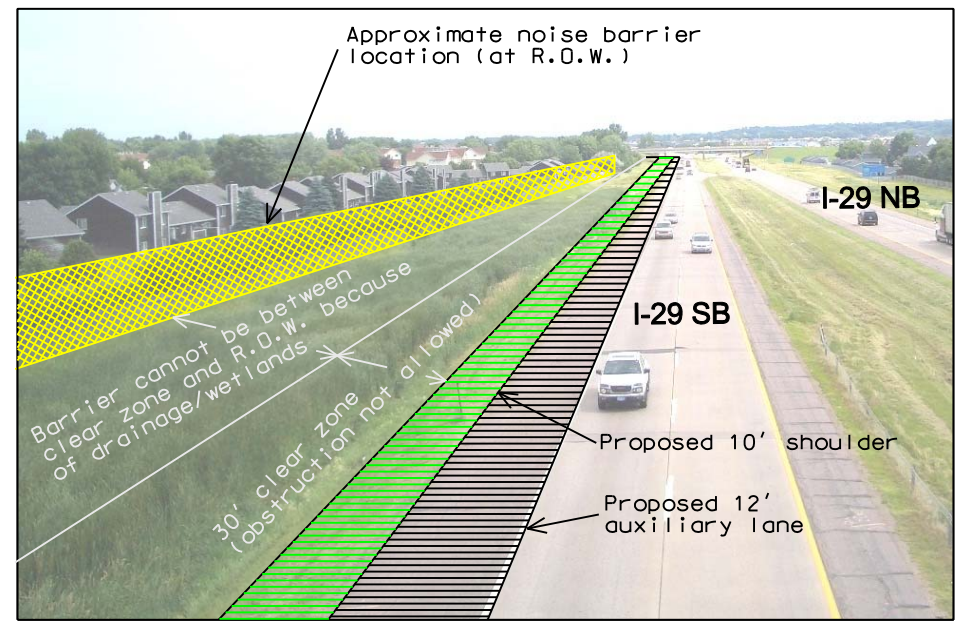
See this web site:  
<http://www.sddot.com/PE/projdev/environment.asp>  
 for:

- November 2005 Noise Report
- November 30, 2005 Public Meeting Presentation
- July 30, 2010 Noise Report Addendum
- August 26, 2010 Public Meeting Presentation

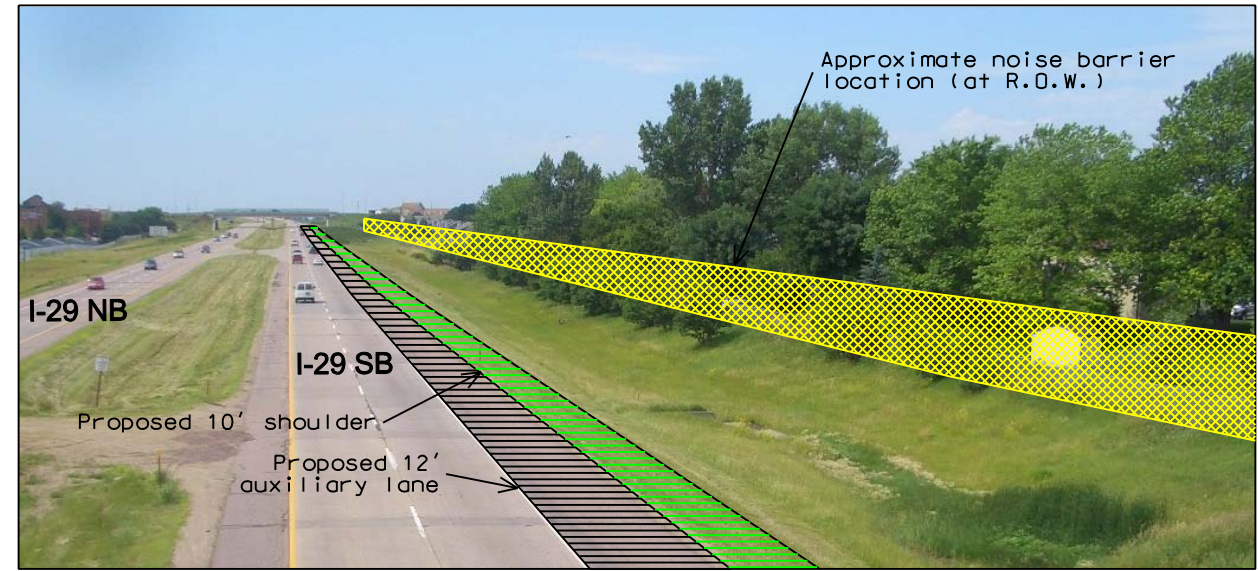
Wall Length = 2,701'  
 Average Wall Height = 10.97'  
 Wall Area = 29,618 sq.ft.  
 Wall Cost = \$888,540 (@ \$30 per sq.ft.)  
 Benefitted Receptors = 69  
 Cost Reasonability = \$12,877 per benefitted receptor

**Impacted Receptor:**  
 Year 2035 noise level approaches or exceeds SDDOT standard of 67 dBA.

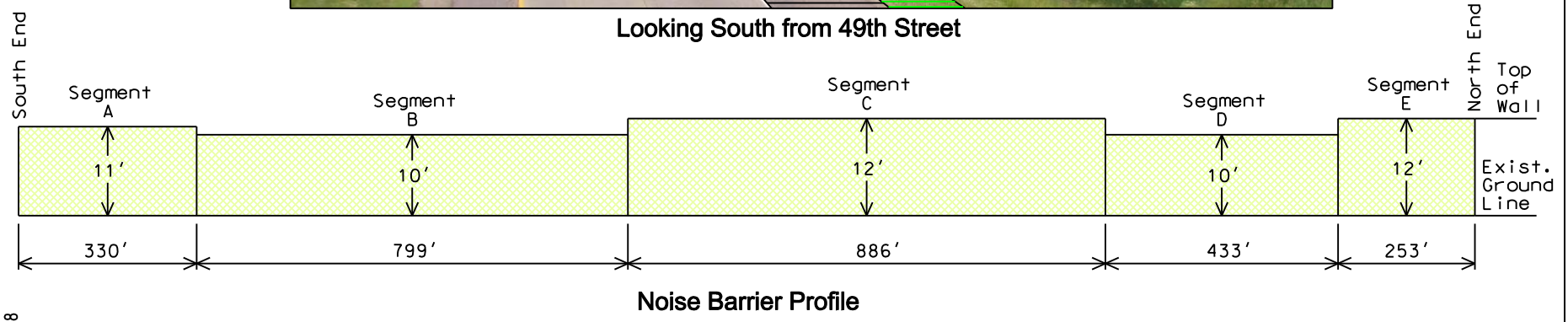
**Benefitted Receptor:**  
 Noise wall provides minimum 5 dBA of noise reduction with year 2035 traffic conditions.



Looking North from 57th Street



Looking South from 49th Street



Noise Barrier Profile

Date of Aerial Photography: 2008

Drawn by: B. Miller  
 Date: 07/16/2010  
 Checked by: J. Unruh  
 Date: 07/16/2010  
 Revision Date:  
 08/26/2010



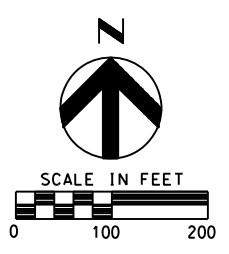
**Southwest Barrier Layout**  
 August 26, 2010 Public Meeting Handout  
 I-29 Noise Analysis  
 Sioux Falls, South Dakota

**Figure**  
 4





Date of Aerial Photography: 2008

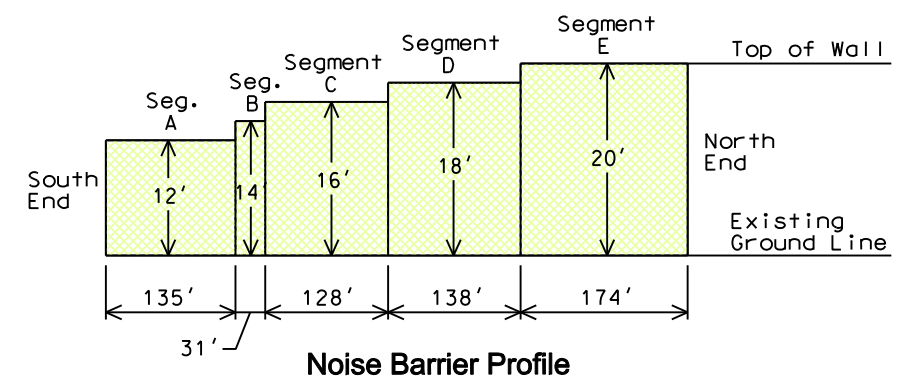


See this web site:  
<http://www.sddot.com/PE/projdev/environment.asp>  
 for:  
 November 2005 Noise Report  
 November 30, 2005 Public Meeting Presentation  
 July 30, 2008

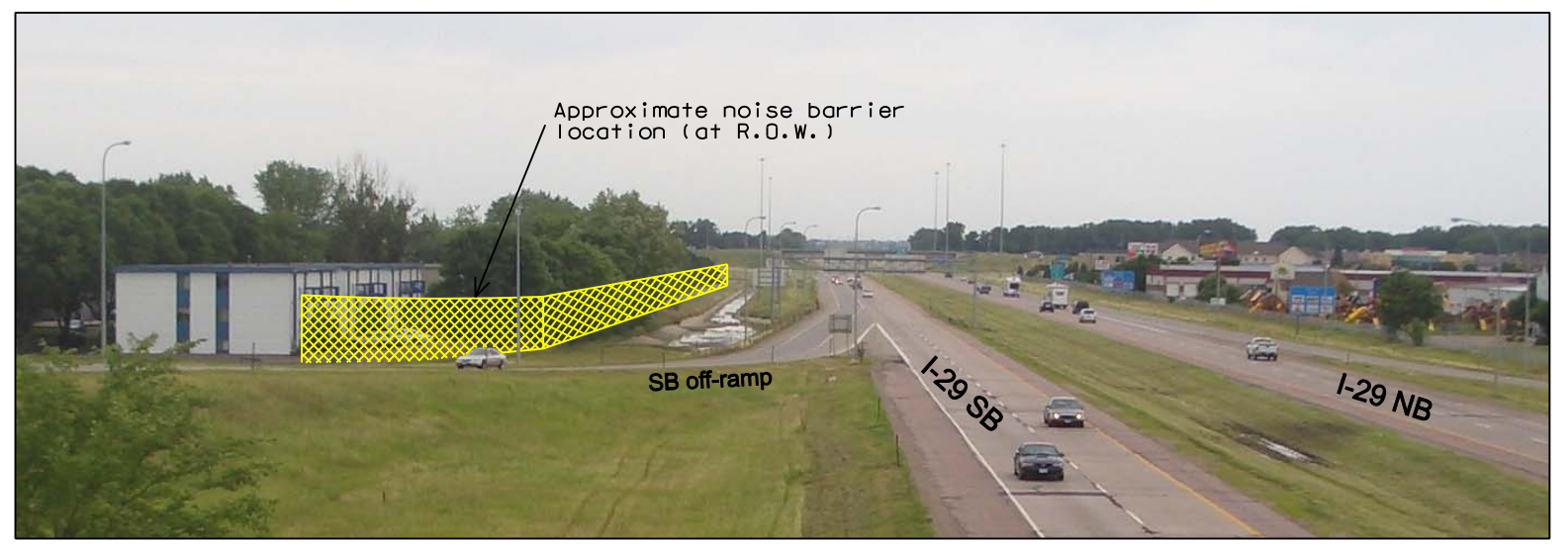
Wall Length = 606'  
 Average Wall Height = 16.61'  
 Wall Area = 10,066 sq.ft.  
 Wall Cost = \$301,980 (@ \$30 per sq.ft.)  
 Benefitted Receptors = 22  
 Cost Reasonability = \$13,726 per benefitted receptor

**Impacted Receptor:**  
 Year 2035 noise level approaches or exceeds SDDOT standard of 67 dBA.

**Benefitted Receptor:**  
 Noise wall provides minimum 5 dBA of noise reduction with year 2035 traffic conditions.



Looking South toward 41st Street



Looking North from 41st Street Bridge

**North Barrier Layout  
 August 26, 2010 Public Meeting Handout**

07/16/2010  
 07/16/2010  
 08/26/2010