

## What types of improvements are being considered?

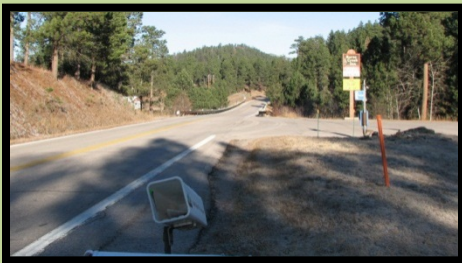
On US 385, from mile marker 87 to 102, the SDDOT proposes that the existing highway's paved shoulders be expanded and rumble strips added, where feasible. Also, resurfacing of the existing roadway will be considered.

Many accidents have occurred on this stretch of the roadway. Limited sight distance and sharp curves create hazards on this section of US 385. Improvements could significantly increase the safety in this highly traveled section of US 385.

Existing Roadway:



Limited sight distance due to sharp curves.



Narrow shoulders limit recovery time and bicycle use.

## Frequently Asked Questions

### What is an Environmental Assessment?

An Environmental Assessment (EA) documents the federal agency process which includes coordinating with the public and agencies, developing a purpose and need, developing a range of alternatives, and analyzing the alternatives to determine the preferred alternative.

### Why improve this roadway?

This segment of US 385 has had several accidents, some fatal. By improving the roadway's safety features, accidents may be avoided in the future. Also, a new roadway surface may be put in place to replace the current surface that is deteriorating.

### How long is the part of the roadway that is going to be updated?

The roadway that will be updated is approximately 15 miles long, from mile marker 87 to 102 (see map on opposite page).

### What are the problems with the existing roadway shoulders?

The existing shoulders are 2 to 3 feet wide and have steep slopes, resulting in a limited recovery zone for drivers. Expanding the shoulders to six feet, where feasible, would increase this valuable recovery zone in the case of an accident.

### Why do you need access to my property for surveys?

As part of the project, an environmental document needs to be completed to examine the resources, such as cultural sites, in the area. These surveys are conducted with every intent of not causing any damage.

South Dakota Department of Transportation  
ATTN: Brace Prouty  
700 East Broadway  
Pierre, SD 57501

## Invitation

### US 385 Roadway Improvements



### Public Meeting/Open House: January 31, 2013

Rimrock Community Center  
12270 W Highway 44, Johnson Siding  
Open House: 4:30 pm - 6:30 pm  
Presentation: 5:30 pm

*All persons interested in this project are invited to attend this meeting/open house to share your views and concerns.*

Notice is further given to individuals with disabilities that this open house/public meeting is being held in a physically accessible place. Please notify the SDDOT ADA Coordinator at least 48 hours prior to the open house/public meeting if you have special needs for which this agency will need to make arrangements. The telephone number for making special arrangements is 605-773-3540 or 1-800-877-1113 (Telecommunications Relay Services for the Deaf).

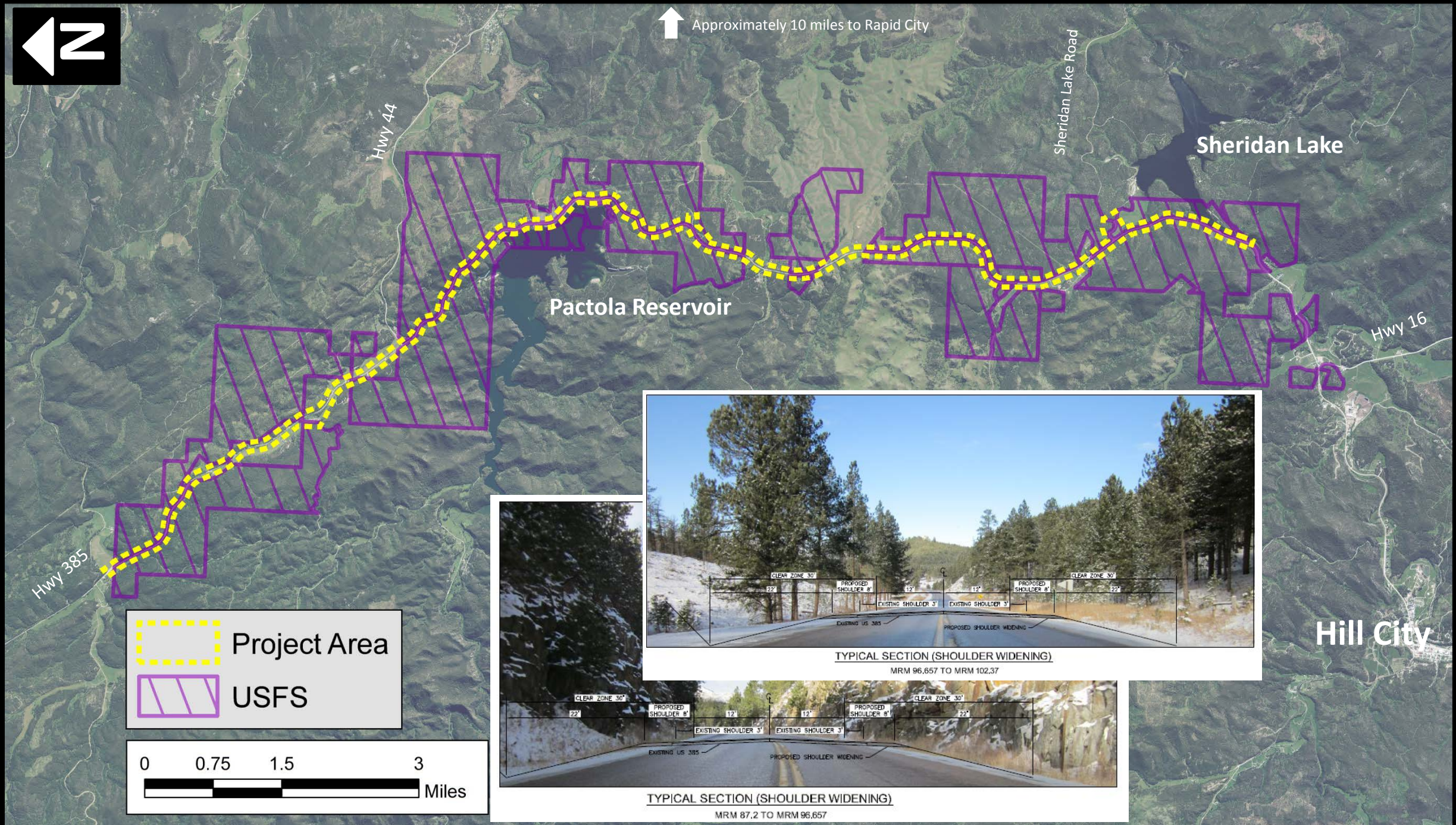
For further information, please contact  
Brace Prouty, SDDOT, 605.773.5961  
[brace.prouty@state.sd.us](mailto:brace.prouty@state.sd.us) or Jody Page, HDR  
Engineering, 605.791.6100  
[jody.page@hdrinc.com](mailto:jody.page@hdrinc.com)



# US 385 Roadway Improvements Project Area



↑ Approximately 10 miles to Rapid City



 Project Area

 USFS



TYPICAL SECTION (SHOULDER WIDENING)  
MRM 96,657 TO MRM 102,37



TYPICAL SECTION (SHOULDER WIDENING)  
MRM 87,2 TO MRM 96,657

Hill City