

Public Meeting

SD Highway 25 / SD Highway 28

From North of De Smet to 0.3 miles North of
the North Junction of SD Highway 28

Kingsbury & Clark Counties

P 0025(85)115

PCN 04XC

P 0028(44)316

PCN 064U

PH 0025(91)131

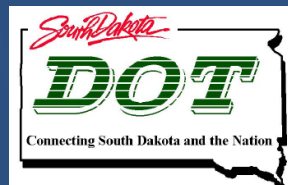
PCN 05WG

Waylon Blasius, PE

Banner Associates, Inc.

Project Engineer

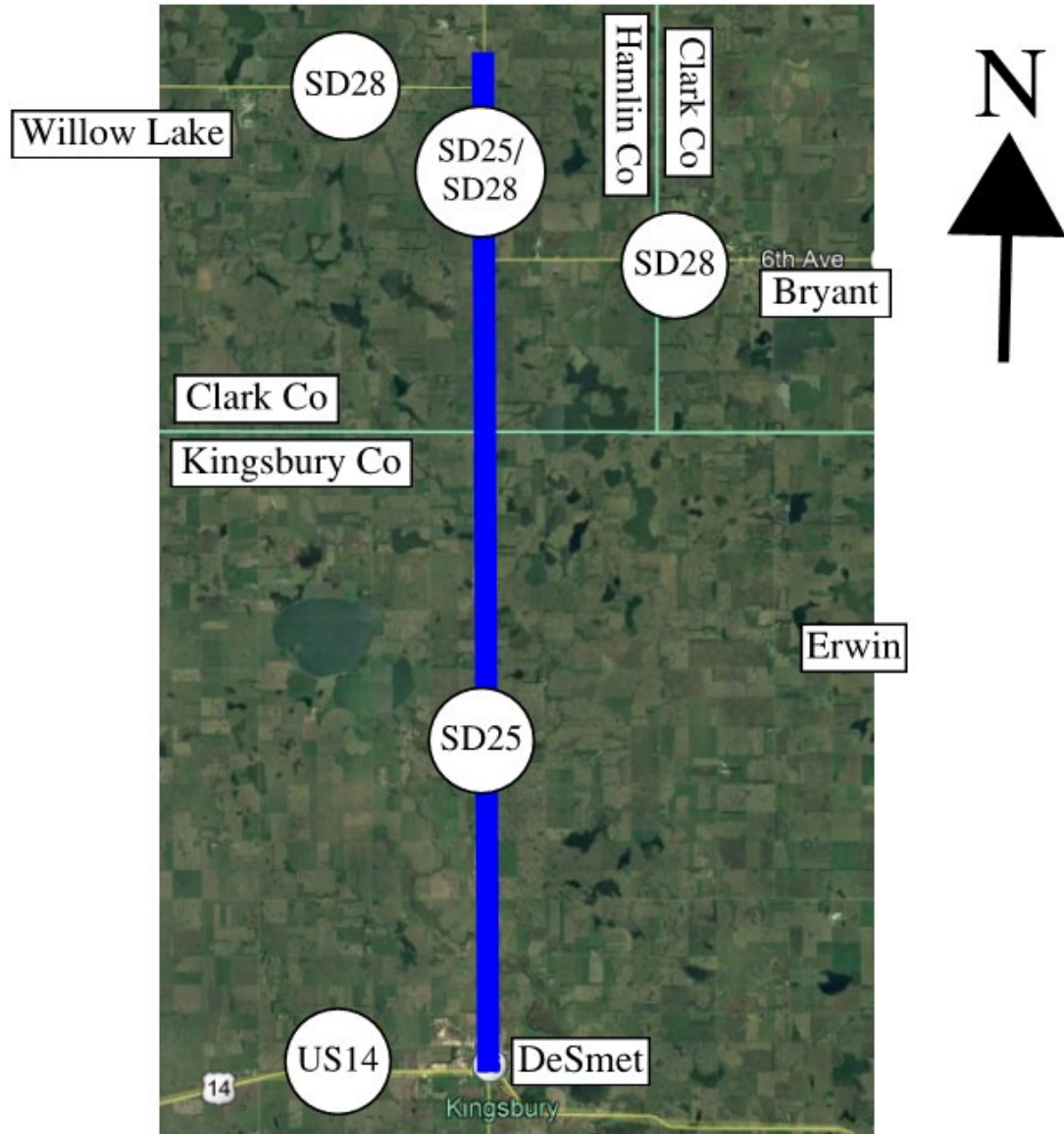
August 13, 2019



Purpose of the Meeting

- **Involve the public in the planning and design process**
- **Provide a Project Overview**
 - Background Information
 - Proposed Project
 - Project Schedule
- **Gather Input and Comments**

Project Limits



Background Information

SD Highway 25

- Grading and Surfacing in 1954
- Resurfaced in 1972
- Resurfaced in 1990
- Milled and Resurfaced in 2010

SD Highway 28

- Grading and Surfacing in 1955
- Resurfaced in 1994
- Resurfaced in 2014



Traffic

SD Highway 25

- 2016 Average Daily Traffic (ADT) = 1354
- 2036 Projected ADT = 1573
- 22.4% Average Truck Traffic

SD Highway 28

- 2016 Average Daily Traffic (ADT) = 923
- 2036 Projected ADT = 1269
- 12.0% Average Truck Traffic

Crash History

SD Highway 25

➤ 5 Year Period from 2012 to 2016

- 64 Reported Crashes
 - 53 Animal Hit
 - 9 Other
- 0 Fatalities
- 5 Injuries
- Reported Crash Rate = 2.28

SD Highway 28

➤ 5 Year Period from 2012 to 2016

- 10 Reported Crashes
 - 8 Animal Hit
 - 2 Other
- 0 Fatalities
- 1 Injury
- Reported Crash Rate = 2.60

➤ Rural Principal Arterial

- Statewide Weighted Crash Rate = 1.69
crashes per million vehicle miles of travel

Highway Deficiencies

- Vertical Curves
- Narrow Shoulders – 3 feet
- Pipe Culverts
- Box Culverts

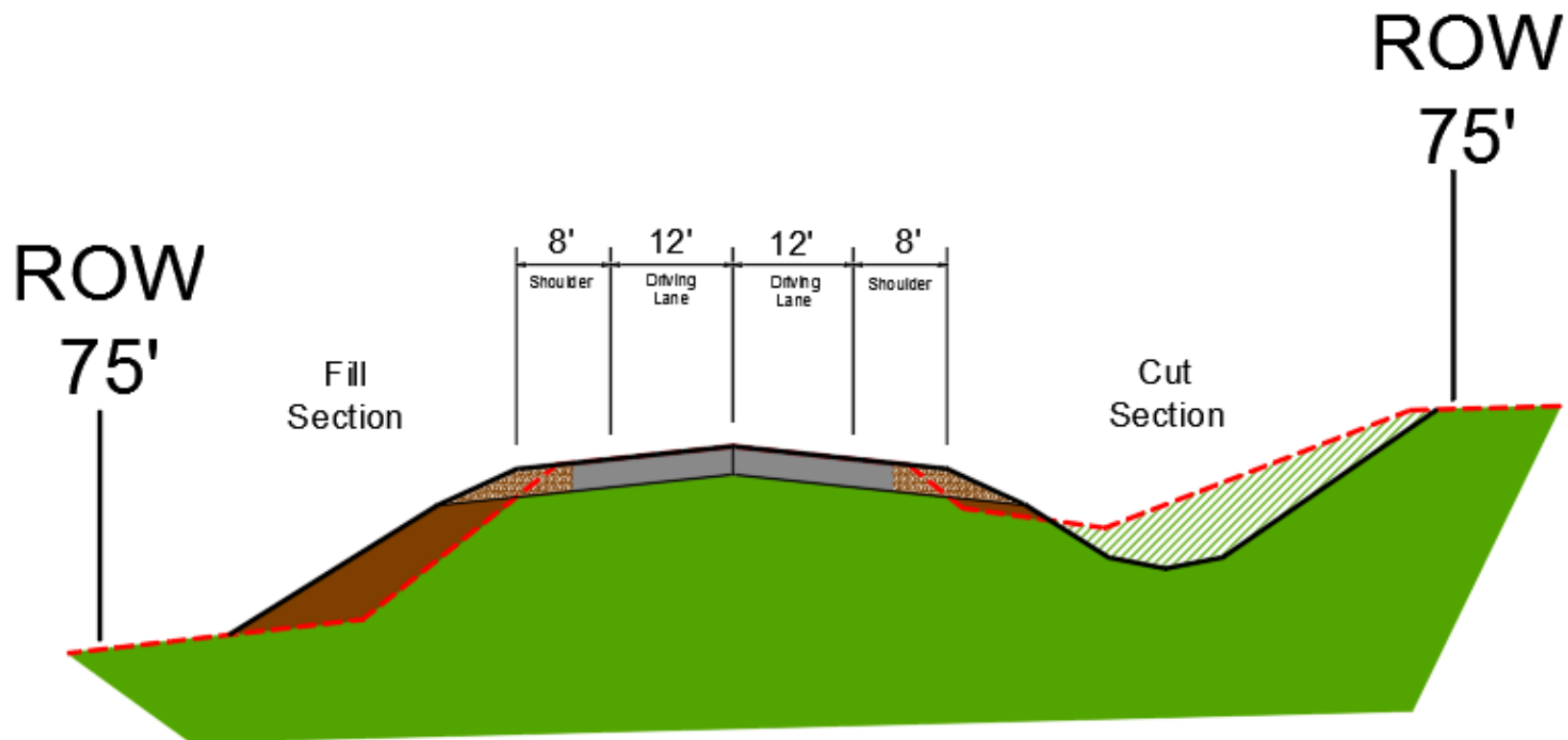


Proposed Improvements

- Regrade vertical profile of roadway
- Construct 2 – 12 foot lanes with 8 foot shoulders
- Replace pipe culverts and box culverts
- Add left turn lane at the North SD 28 intersection



SD 25 & SD 28 Typical Grading Section



Access Management

- To provide safe, efficient access to streets and highways
- Limit number of direct accesses to major roadways

See Handout



Right of Way (ROW)

- Existing Width - 150 feet
- Proposed to remain 150 feet
- Temporary Easements as needed for construction

See Handout



Encroachments

- **Encroachments - Private Property Located Within the Public ROW**
 - Federal Highway Regulations
 - Safety
- **Examples of Encroachments**
 - Signs
 - Private Use (Parking)
 - Landscaping Items
- **DOT Completed Survey – No Encroachments Found**

See Handout



Utility Coordination

- Some Utilities may need to be relocated
- Utility Companies may negotiate easements with landowners as needed

Mediacom
City of De Smet
Interstate Telecommunications Coop.
Kingsbury Electric Coop.
Kingbrook Rural Water
Northern Natural Gas

Century Link
SDN Communications
Clark County
Mundhenke Farms
Northwestern Energy
Ottertail Power Co.

See Handout



Utility Coordination

- **Any Known Private Utilities?**
 - Waterlines
 - Drainfields
 - Septic Tanks
 - Underground Storage Tanks
 - Underground Power Lines
 - Drain Tiles or Encasement Pipes
- **Contact SDDOT**

See Handout



Environmental, Social & Economic Concerns

- This project is being developed in accordance with applicable State and Federal environmental regulations.
- In accordance with the National Environmental Policy Act of 1969 (NEPA), as amended, coordination has been initiated with State & Federal resource agencies.

See Handout



Environmental, Social & Economic Concerns

- A cultural resources survey will be conducted.
- The project is being reviewed to determine:
 - Wetland impacts
 - Section 4(f) – Parks & Refuges
 - Section 106 – Historic Properties & Tribal

See Handout



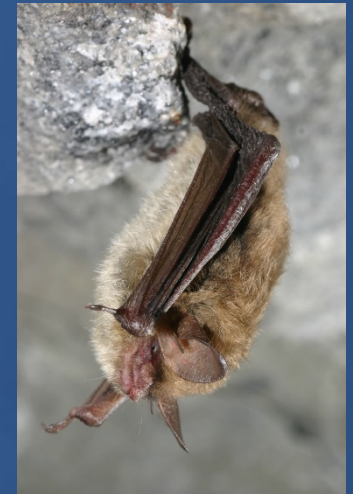
Environmental, Social & Economic Concerns

Threatened & Endangered Species

The U.S. Fish & Wildlife Service will review the project to determine if it will impact the following species that are known to occur in Kingsbury & Clark County:

- Birds: Whooping Crane, Rufa Red Knot, Piping Plover
- Mammals: Northern Long-Eared Bat
- Fish: Topeka Shiners
- Insects: Poweshiek Skipperling

Awaiting a final determination but at this time no impacts are anticipated to these species by the project.



See Handout

Construction Traffic Control

- Local traffic and emergency vehicle access will be maintained
- Through traffic will be detoured to alternate routes

Landowner Meetings

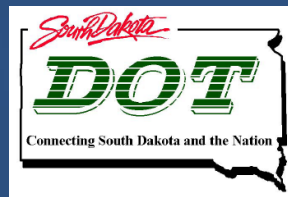
➤ Spring 2020

- Will be contacted by Banner Associates Inc. to schedule appointment

➤ Held with individual landowners adjacent to the project

- Driveway location / widths
- Fence
- Drainage
- Trees
- Temporary Easements

See Handout



Tentative Project Schedule

Dependent on Federal Funding

Landowner Meetings	Spring 2020
--------------------	-------------

Final Design	2020
--------------	------

ROW Appraisal	2021
---------------	------

Negotiations	
--------------	--

Construction	2023
--------------	------

Estimated Cost:	\$13.3 million
-----------------	----------------



Public Meeting Survey

- How did we do?
- Please fill out survey and turn back into one of our DOT staff tonight
- Survey can also be completed online at the site shown on the survey

Survey Monkey @

<https://www.surveymonkey.com/r/SDDOT-Public-Meeting-Survey>



Questions or Comments

Please Submit Questions or Comments by
August 27, 2019 to:

Waylon Blasius
Banner Associates, Inc.
409 22nd Ave. S
Brookings, SD 57006

waylonb@bannerassociates.com

Public Meeting Information @
<http://sddot.com/dot/publicmeetings/default.aspx>

