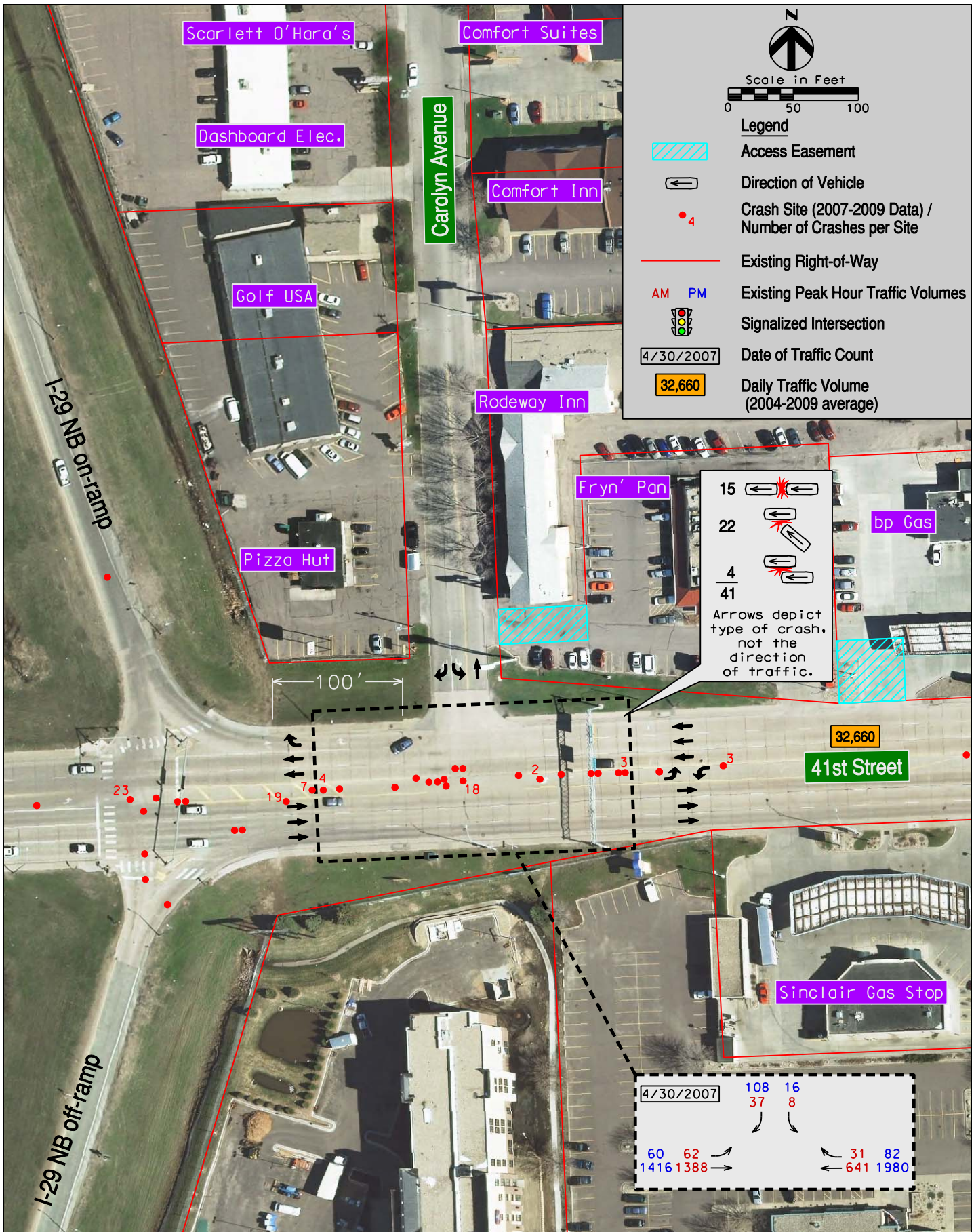


Existing Conditions - 41st St. to 26th St.
Carolyn Avenue Access Analysis
 I-29 Exit 77 (41st Street) Crossroad Corridor Study Sioux Falls, SD

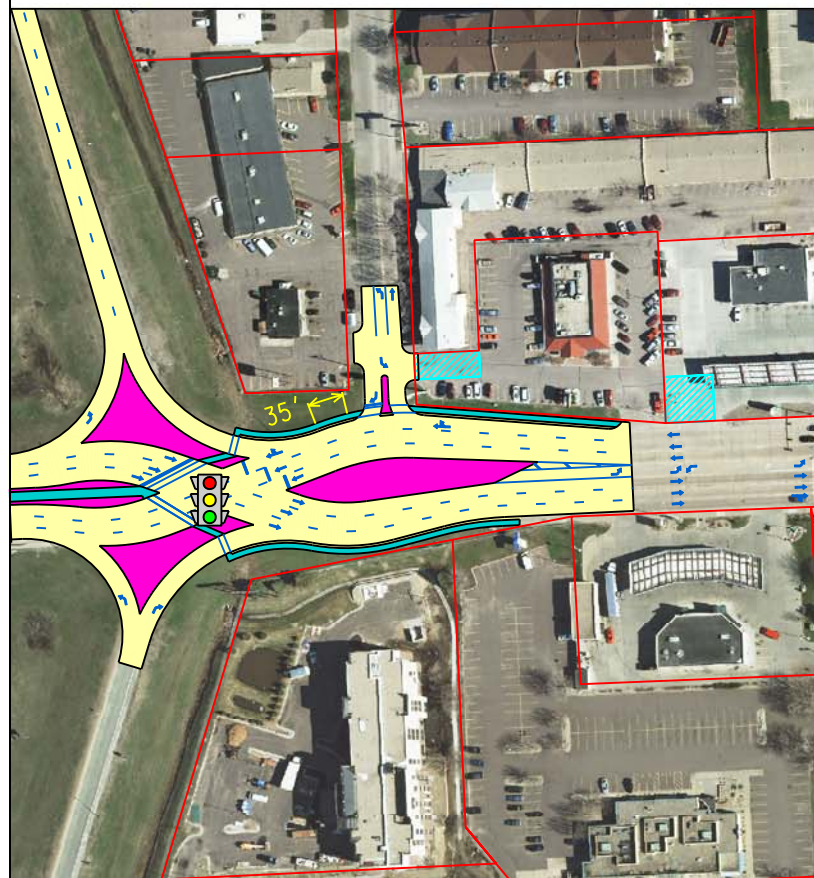


Legend

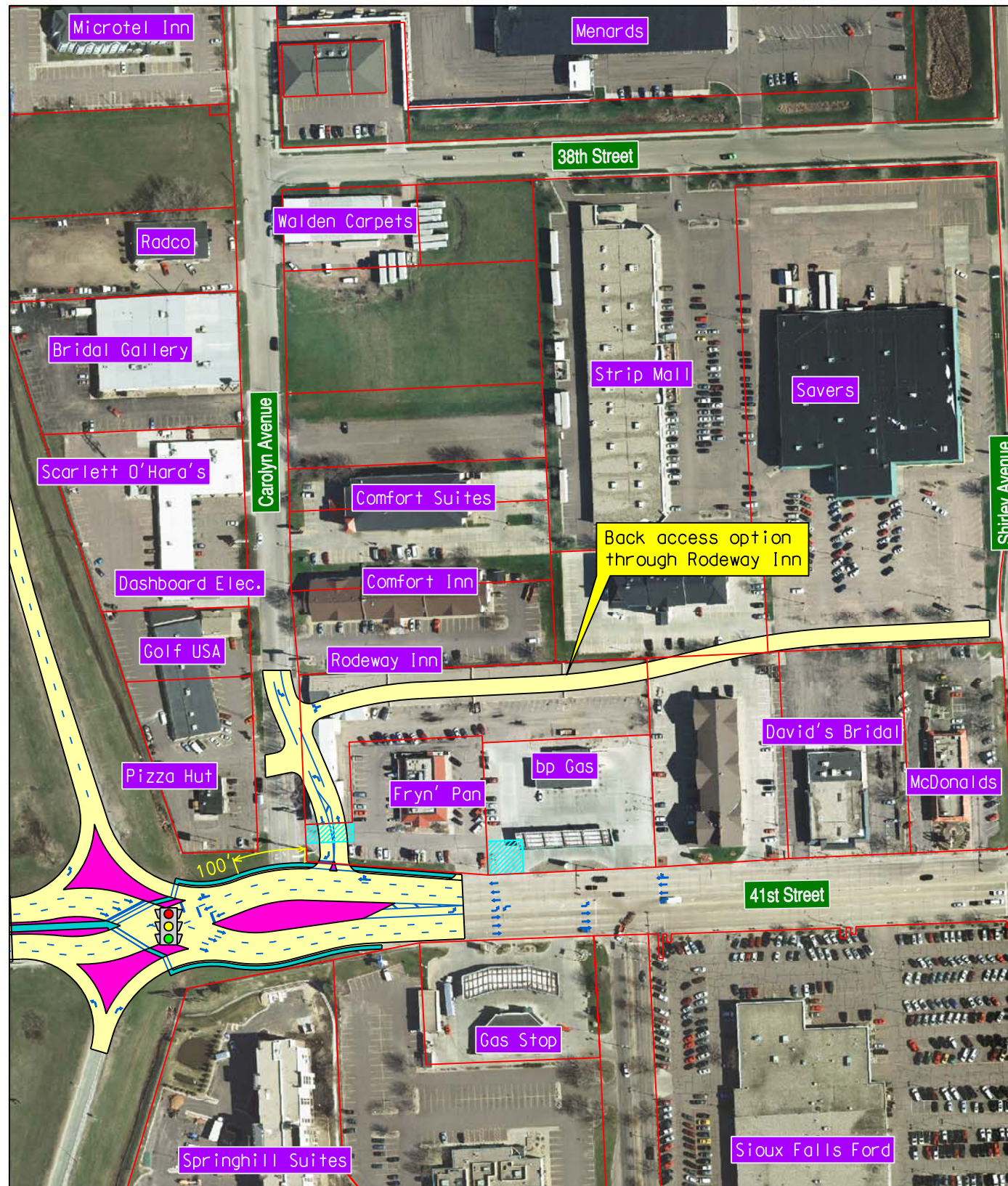
- Roadway Construction
- Raised Island / Median
- Sidewalk
- Access Easement
- Existing Right-of-Way

Scale in Feet
0 100 200

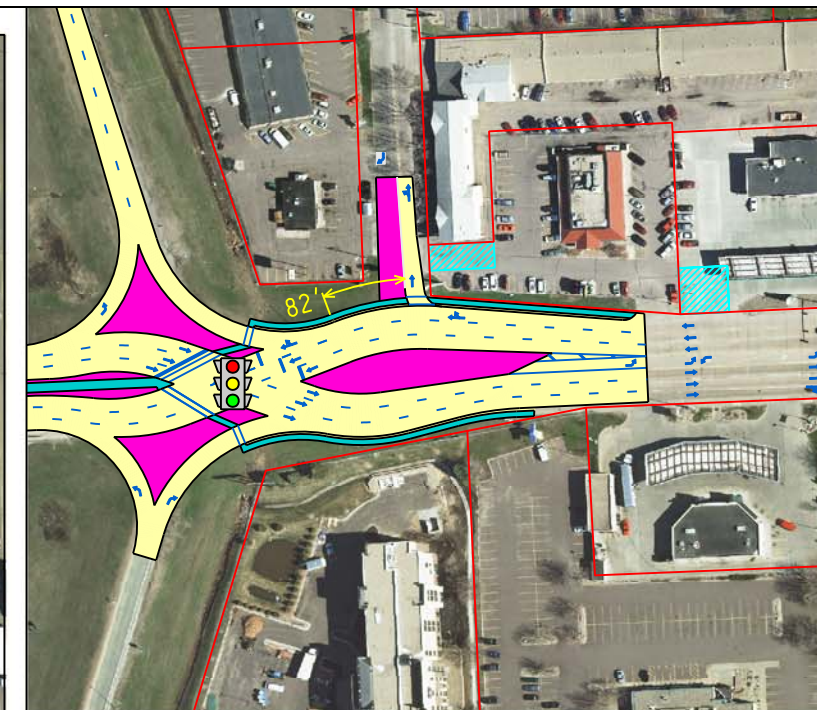
Signalized Intersection



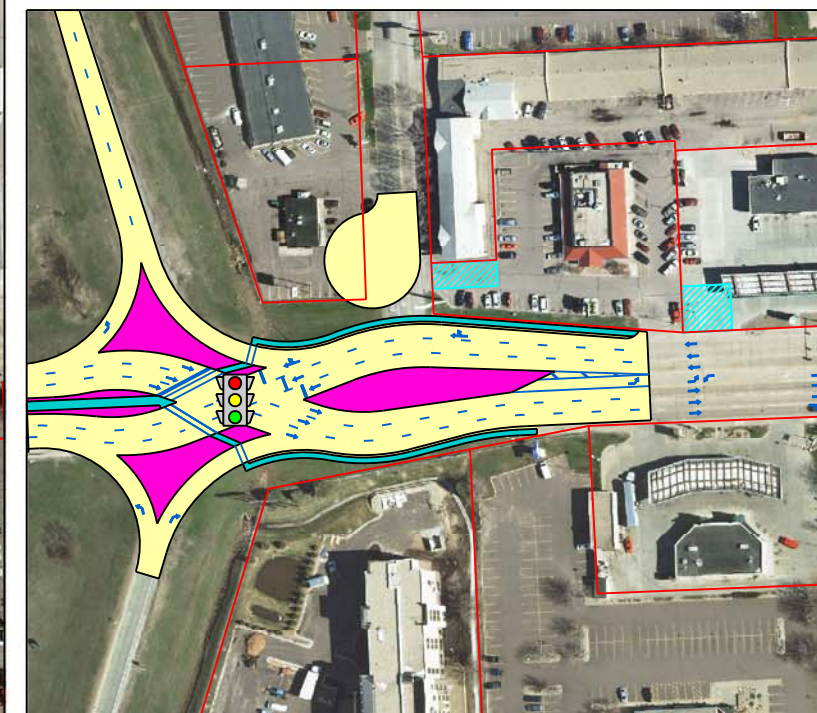
Option 1
Right-in / Right-out at existing Carolyn Avenue
Inadequate spacing to I-29 ramp therefore not desirable



Option 2
Right-in / Right-out with realigned Carolyn Avenue
Back access constructed through Rodeway Inn



Option 3
Right-in only at existing Carolyn Avenue



Option 4
Cul-de-sac Carolyn Avenue

Drawn By: B. Miller
Date: 3-9-2012
Checked By: J. Unruh
Date: 3-9-2012
Revisions:



Carolyn Avenue Access Options

I-29 Exit 77 (41st Street) Crossroad Corridor Study

Sioux Falls, SD

Figure
6-3F

Date of Aerial Photography: 2008