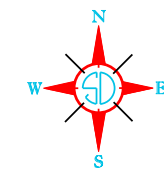


**LEGEND**

INTERSTATE HIGHWAY (FULL CONTROL OF ACCESS)		NARROW STREAM	
U.S. NUMBERED HIGHWAY		WIDE STREAM (INTERMITTENT NAVIGATION)	
STATE HIGHWAY		DRAINAGE DITCH (MAN)	
FEDERAL AID HIGHWAY SYSTEM		IRRIGATION DITCH	
FEDERAL AID SECONDARY HIGHWAY SYSTEM		RESERVOIR, POND OR LAKE	
END OF FEDERAL AID DESIGNATED ROUTE		FAS	
PRIMITIVE ROAD		RESERVOIR, WITH DAM	
UNIMPROVED ROAD		DAM	
GRADED AND DRAINED ROAD		MARSH OR SWAMP LAND	
GRAVEL OR STONE SURFACED ROAD		DOCK, PIER, OR LANDING	
HARD SURFACED ROAD		SECTION LINE (OVER 20 FT. IN LENGTH)	
DIVIDED HIGHWAY (WITH FRONTAGE ROAD)		HIGHWAY BRIDGES CLOSELY SPACED	
INTERCHANGE		STEEL TRUSS BRIDGE (LARGE)	
HIGHWAY GRADE SEPARATION		CANTILEVER BRIDGE	
POINTS BETWEEN WHICH DISTANCES ARE MEASURED INDICATED THUS		FORD - ROAD ESTABLISHED	
RAILROAD		CONCRETE FORD	
RAILROADS IN Juxtaposition		CAUSEWAY	
TWO OR MORE TRACKS OF SEPARATELY OPERATED COMPANIES ON ADJACENT RIGHT-OF-WAY		CATTLE GUARD	
RAILROAD CROSSINGS		PROMINENT ELEVATION	
RAILROAD ABOVE		STATE LINE	
RAILROAD BELOW		COUNTY LINE	
AIRPORT WITH SURFACED RUNWAYS		CONGRESSIONAL TOWNSHIP LINE	
MILITARY FIELD		SECTION LINE	
AIRPORT, COMPLETE FACILITIES (COMMERCIAL OR MUNICIPAL)		FEDERAL AND STATE RESERVATION BOUNDARY LINE	
AIRFIELD, LIMITED FACILITIES		MONUMENT (SMALL)	
LANDING AREA OR STRIP (INCLUDING PRIVATE AIR FIELDS)		COUNTY SEAT	
AIRWAY LIGHT BEACON (GENERAL)		OTHER CITIES AND VILLAGES	
		UNINCORPORATED VILLAGE OR AREA OF CONGESTED CULTURE	
		INCORPORATED CITY OR VILLAGE (FIGURES INDICATED 1990 POPULATION)	

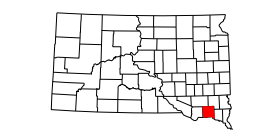


**GENERAL HIGHWAY MAP**  
**YANKTON COUNTY**  
**SOUTH DAKOTA**

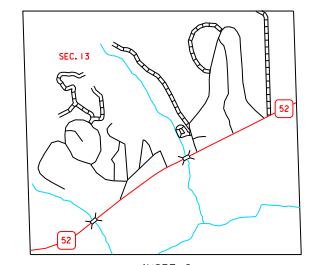
prepared by the  
**SOUTH DAKOTA DEPARTMENT OF TRANSPORTATION**  
in cooperation with the  
**U.S. DEPARTMENT OF TRANSPORTATION**  
**FEDERAL HIGHWAY ADMINISTRATION**



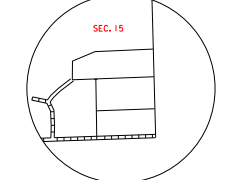
2019



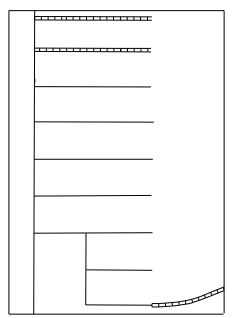
UNIVERSAL TRANSVERSE MERCATOR PROJECTION



INSET C  
SEC. 13 - 193N - R57W  
SCALE IN MILES



INSET B  
SEC. 15 - 193N - R56W  
SCALE IN MILES



INSET A  
SEC. 15 - 193N - R56W  
SCALE IN MILES

**RESTRICTION OF LIABILITY:** The South Dakota Department of Transportation makes no claims, promises or warranties about the accuracy, completeness or timeliness of the data or expressly disclaims liability for errors and omissions of the data content. No warranty of any kind, implied, expressed or statutory, including but not limited to the warranties of non-infringement of third party rights, title, merchantability and fitness for a particular purpose is given with respect to this data.

COPIES OF THIS MAP ARE AVAILABLE FOR PUBLIC USE AT A NOMINAL COST  
S.D. Department of Transportation  
Map Sales - - Ph: 605/773 3249  
Pierre, South Dakota 57501