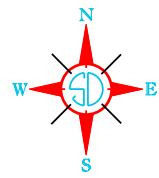


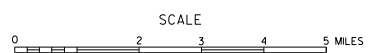
LEGEND

INTERSTATE HIGHWAY (FULL CONTROL OF ACCESS)		NARROW STREAM	
U.S. NUMBERED HIGHWAY		WIDE STREAM (INTERMITTENT NAVIGATION)	
STATE NUMBERED HIGHWAY		DRAINAGE DITCH (PERMANENT NAVIGATION)	
FEDERAL AID HIGHWAY SYSTEM		IRRIGATION DITCH	
FEDERAL AID SECONDARY HIGHWAY SYSTEM		RESERVOIR, POND OR LAKE	
END OF FEDERAL AID DESIGNATED ROUTE		RESERVOIR, WITH DAM	
PRIMITIVE ROAD		DAM	
UNIMPROVED ROAD		MARSH OR SWAMP LAND	
GRADED AND DRAINED ROAD		DOCK, PIER, OR LANDING	
GRAVEL OR STONE SURFACED ROAD		HIGHWAY BRIDGE (OVER 20 FT. IN LENGTH)	
HARD SURFACED ROAD		HIGHWAY BRIDGES CLOSELY SPACED	
DIVIDED HIGHWAY (WITH FRONTAGE ROAD)		STEEL TRUSS BRIDGE (LARGE)	
INTERCHANGE		CANTILEVER BRIDGE	
HIGHWAY GRADE SEPARATION		FORD - ROAD ESTABLISHED	
POINTS BETWEEN WHICH DISTANCES ARE MEASURED INDICATED THUS		CONCRETE FORD	
RAILROAD		CAUSEWAY	
RAILROADS IN JUNCTURE POSITION		CATTLE GUARD	
TWO OR MORE TRACKS OF SEPARATELY OPERATED COMPANIES ON ADJACENT RIGHT-OF-WAY		PROMINENT ELEVATION	
RAILROAD CROSSINGS		STATE LINE	
GRADE CROSSINGS		COUNTY LINE	
RAILROAD ABOVE		CONGRESSIONAL TOWNSHIP LINE	
RAILROAD BELOW		SECTION LINE	
AIRPORT WITH SURFACED RUNWAYS		FEDERAL AND STATE RESERVATION BOUNDARY LINE	
MILITARY FIELD		MONUMENT (SMALL)	
AIRPORT, COMPLETE FACILITIES (COMMERCIAL OR MUNICIPAL)		COUNTY SEAT	
AIRFIELD, LIMITED FACILITIES		OTHER CITIES AND VILLAGES	
LANDING AREA OR STRIP (INCLUDING PRIVATE AIR FIELDS)		UNINCORPORATED VILLAGE OR AREA OF CONGESTED CULTURE	
AIRWAY LIGHT BEACON (GENERAL)		INCORPORATED CITY OR VILLAGE (FIGURES INDICATED 1990 POPULATION)	

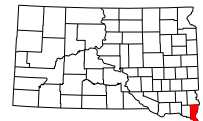


GENERAL HIGHWAY MAP
UNION COUNTY
 SOUTH DAKOTA

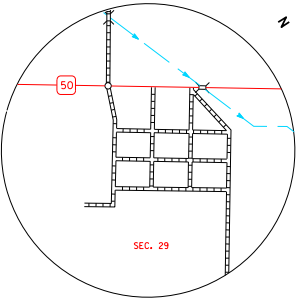
prepared by the
 SOUTH DAKOTA DEPARTMENT OF TRANSPORTATION
 in cooperation with the
 U.S. DEPARTMENT OF TRANSPORTATION
 FEDERAL HIGHWAY ADMINISTRATION



2019



UNIVERSAL TRANSVERSE MERCATOR PROJECTION



RICHLAND
 SEC. 29 - T. 92 N. - R. 49 W.
 SCALE IN MILES

RESTRICTION OF LIABILITY: The South Dakota Department of Transportation makes no claims, promises or guarantees about the accuracy, completeness, or timeliness of the data and expressly disclaims liability for errors and omissions of the data contained herein. No warranty of any kind, implied, expressed or statutory, including but not limited to the warranties of merchantability and fitness for a particular purpose is given with respect to this data.

COPIES OF THIS MAP ARE AVAILABLE FOR PUBLIC USE AT A NOMINAL COST
 S.D. Department of Transportation
 Map Sales - Pk. 1605/773 3249
 Pierre, South Dakota 57501