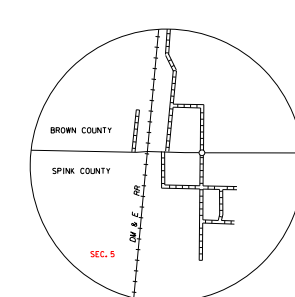
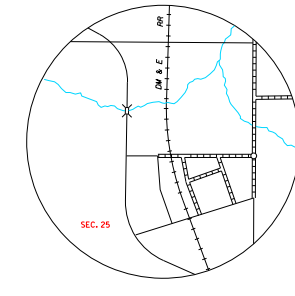


LEGEND

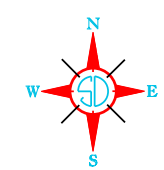
INTERSTATE HIGHWAY (FULL CONTROL OF ACCESS)		NARROW STREAM	
U.S. NUMBERED HIGHWAY		WIDE STREAM (INTERMITTENT NAVIGATION)	
STATE NUMBERED HIGHWAY		DRAINAGE DITCH (MARK)	
FEDERAL AID HIGHWAY SYSTEM		IRRIGATION DITCH	
FEDERAL AID SECONDARY HIGHWAY SYSTEM		FAS	
END OF FEDERAL AID DESIGNATED ROUTE		RESERVOIR, POND OR LAKE	
		RESERVOIR, WITH DAM	
		DAM	
		MARSH OR SWAMP LAND	
PRIMITIVE ROAD		DOCK, PIER, OR LANDING	
UNIMPROVED ROAD		HIGHWAY BRIDGE (OVER 20 FT. IN LENGTH)	
GRAVEL OR DRAINAGE ROAD		HIGHWAY BRIDGES CLOSELY SPACED	
GRAVEL OR STONE SURFACED ROAD		STEEL TRUSS BRIDGE LARGE	
HARD SURFACED ROAD		CANTILEVER BRIDGE	
DIVIDED HIGHWAY (WITH FRONTAGE ROAD)		FORD - ROAD ESTABLISHED	
INTERCHANGE		CONCRETE FORD	
HIGHWAY GRADE SEPARATION		CAUSEWAY	
POINTS BETWEEN WHICH DISTANCES ARE MEASURED INDICATED THIS		CATTLE GUARD	
RAILROAD		PROMINENT ELEVATION	
RAILROADS IN ADJUNCTION		STATE LINE	
TWO OR MORE TRACKS OF SEPARATELY OPERATED COMPANIES ON ADJACENT RIGHT-OF-WAY		COUNTY LINE	
RAILROAD CROSSINGS		CONGRESSIONAL TOWNSHIP LINE	
GRADE CROSSINGS		SECTION LINE	
RAILROAD ABOVE		FEDERAL AND STATE RESERVATION BOUNDARY LINE	
RAILROAD BELOW		MONUMENT (SMALL)	
		COUNTY SEAT	
		OTHER CITIES AND VILLAGES	
AIRPORT WITH SURFACED RUNWAYS		UNINCORPORATED VILLAGE OR AREA OF CONGESTED CULTURE	
		MILITARY FIELD	
AIRPORT, COMPLETE FACILITIES (COMMERCIAL OR MUNICIPAL)		INCORPORATED CITY OR VILLAGE (FIGURES INDICATED 1990 POPULATION)	
AIRFIELD, LIMITED FACILITIES			
LANDING AREA OR STRIP INCLUDING PRIVATE AIR FIELDS			
ARMY LIGHT BEACON (GENERAL)			



MANSFIELD SEC. 5 - T 120 N - R 65 W SCALE IN MILES



ATHOL SEC. 25 - T 118 N - R 65 W SCALE IN MILES

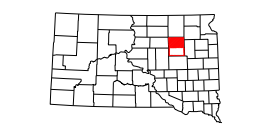


GENERAL HIGHWAY MAP NORTH HALF SPINK COUNTY SOUTH DAKOTA

prepared by the SOUTH DAKOTA DEPARTMENT OF TRANSPORTATION in cooperation with the U.S. DEPARTMENT OF TRANSPORTATION FEDERAL HIGHWAY ADMINISTRATION

SCALE 0 1 2 3 4 5 MILES

2019



UNIVERSAL TRANSVERSE MERCATOR PROJECTION

RESTRICTION OF LIABILITY: The South Dakota Department of Transportation makes no claim, promise or guarantee about the accuracy, completeness or consistency of the data and expressly disclaims liability for errors and omissions of the data content. No warranty of any kind, implied, expressed or statutory, including but not limited to warranties of non-infringement of third party rights, title, merchantability and fitness for a particular purpose is given with respect to this data.

COPIES OF THIS MAP ARE AVAILABLE FOR PUBLIC USE AT A NOMINAL COST S.D. Department of Transportation Map Series - FH 6651/712 1249 Pierre, South Dakota 57501