

LEGEND

ROADS:
 FEDERAL HIGHWAY FULL CONTROL OF ACCESS
 STATE HIGHWAY
 COUNTY ROAD
 UNIMPROVED ROAD
 RAILROAD
 AIRPORT
 AIRPORT WITH SURFACED RUNWAYS
 WALKWAY
 TRAIL

LAND:
 FEDERAL LAND
 STATE LAND
 COUNTY LAND
 PRIVATE LAND
 UNINCORPORATED VILLAGE OR NEIGHBORHOOD
 UNINCORPORATED CITY OR TOWN

UTILITIES:
 ELECTRIC POWER LINE
 TELEPHONE LINE
 GAS LINE
 CABLE TV LINE
 FIBER OPTIC CABLE

FEATURES:
 RIVER
 CREEK
 STREAM
 LAKE
 DAM
 POND
 RESERVOIR
 WEIR
 DRAINAGE CANAL
 IRRIGATION CANAL
 FENCE
 BOUNDARY
 CORNER
 TOWER
 MONUMENT
 MARKER
 SIGN
 BIPOD
 BENCH MARK
 ELEVATION

SYMBOLS:
 CITY
 TOWN
 VILLAGE
 UNINCORPORATED VILLAGE OR NEIGHBORHOOD
 UNINCORPORATED CITY OR TOWN

SCALE
 0 1 2 3 4 5 KILOMETERS
 0 1 2 3 4 5 MILES

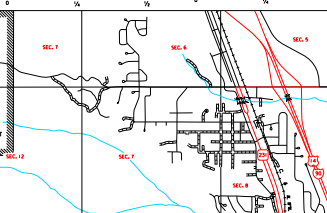
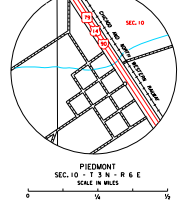
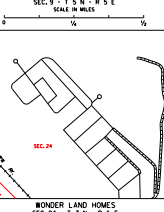
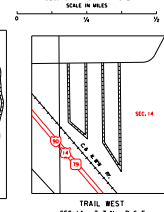
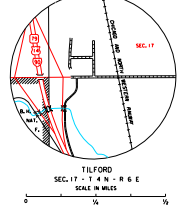
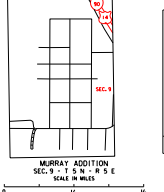
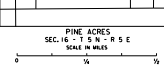
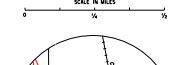
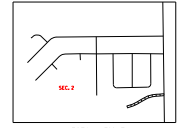
2019

**GENERAL HIGHWAY MAP
 SOUTH HALF
 MEADE COUNTY
 SOUTH DAKOTA**

prepared by the
SOUTH DAKOTA DEPARTMENT OF TRANSPORTATION
 in cooperation with
 U.S. DEPARTMENT OF TRANSPORTATION
 FEDERAL HIGHWAY ADMINISTRATION

LAMBERT CONFORMAL CONIC PROJECTION

COPIES OF THIS MAP ARE AVAILABLE FOR PUBLIC USE AT A NOMINAL COST U.S. Department of Transportation, Map Room - P.O. Box 37098, Kansas City, Missouri 64137-0998



RESTRICTION OF LIABILITY: The South Dakota Department of Transportation and the U.S. Department of Transportation Federal Highway Administration make no warranty, expressed or implied, regarding the accuracy, completeness, or timeliness of the information contained herein. The user of this map assumes all liability for any damage or loss resulting from the use of the information contained herein.

COPIES OF THIS MAP ARE AVAILABLE FOR PUBLIC USE AT A NOMINAL COST U.S. Department of Transportation, Map Room - P.O. Box 37098, Kansas City, Missouri 64137-0998