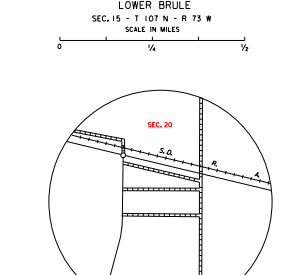
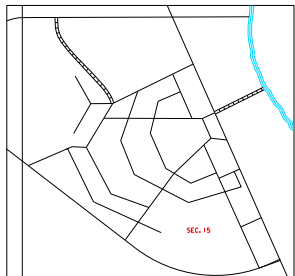
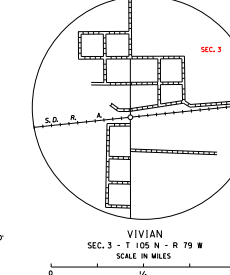
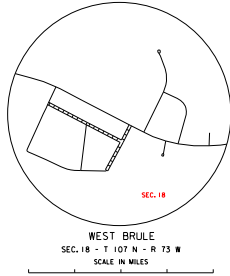


ORIGINAL LOWER BRULE RESERVATION
 HATCHED AREA SHOWS PRESENT RESERVATION (UNOFFICIAL)



LEGEND

| | | | | | | | | | | | | | | | | | | | | | | | | |
|---|--|--------------------|--------------------------------------|------------------------------------|---------------|---------------------------------------|-----------------------|---|--|-----------------------------------|--------------------|-------------------------|-------------------------|--------------------|-----------------------|---|--|--|--------------------|-------------------------|-------------------------|--------------------|-----------------------|-----------------------|
| INTERSTATE HIGHWAY (FULL CONTROL OF ACCESS) | ROAD NUMBERED HIGHWAY | STATE HIGHWAY | FEDERAL AND SECONDARY HIGHWAY SYSTEM | END OF FEDERAL AD DESIGNATED ROUTE | NARROW STREAM | WIDE STREAM (INTERMITTENT NAVIGATION) | BRIDGE (20' OR MORE) | BRIDGE (LESS THAN 20' IN LENGTH) | ROADWAY (20' OR MORE) | ROADWAY (LESS THAN 20' IN LENGTH) | STEEL TRUSS BRIDGE | CANTILEVER BRIDGE | FORD - ROAD ESTABLISHED | CONCRETE FORD | WASH OR SWAMP LAND | SOIL, PEK, OR LANDING | ROADWAY BRIDGE (OVER 20' FT. IN LENGTH) | ROADWAY BRIDGE (LESS THAN 20' FT. IN LENGTH) | STEEL TRUSS BRIDGE | CANTILEVER BRIDGE | FORD - ROAD ESTABLISHED | CONCRETE FORD | WASH OR SWAMP LAND | SOIL, PEK, OR LANDING |
| ROADWAY BRIDGE (OVER 20' FT. IN LENGTH) | ROADWAY BRIDGE (LESS THAN 20' FT. IN LENGTH) | STEEL TRUSS BRIDGE | CANTILEVER BRIDGE | FORD - ROAD ESTABLISHED | CONCRETE FORD | WASH OR SWAMP LAND | SOIL, PEK, OR LANDING | ROADWAY BRIDGE (OVER 20' FT. IN LENGTH) | ROADWAY BRIDGE (LESS THAN 20' FT. IN LENGTH) | STEEL TRUSS BRIDGE | CANTILEVER BRIDGE | FORD - ROAD ESTABLISHED | CONCRETE FORD | WASH OR SWAMP LAND | SOIL, PEK, OR LANDING | ROADWAY BRIDGE (OVER 20' FT. IN LENGTH) | ROADWAY BRIDGE (LESS THAN 20' FT. IN LENGTH) | STEEL TRUSS BRIDGE | CANTILEVER BRIDGE | FORD - ROAD ESTABLISHED | CONCRETE FORD | WASH OR SWAMP LAND | SOIL, PEK, OR LANDING | |

GENERAL HIGHWAY MAP
NORTH HALF
LYMAN COUNTY
SOUTH DAKOTA
 prepared by the
 SOUTH DAKOTA DEPARTMENT OF TRANSPORTATION
 in cooperation with the
 U.S. DEPARTMENT OF TRANSPORTATION
 FEDERAL HIGHWAY ADMINISTRATION

SCALE
 0 1 2 3 4 5 MILES

2021

UNIVERSAL TRANSVERSE MERCATOR PROJECTION

RESTRICTION OF LIABILITY: The South Dakota Department of Transportation makes no warranty, promise or guarantee about the accuracy, completeness or timeliness of the data and information contained herein for any use and omission of the data is the user's responsibility. The data is provided as is and is not intended to be used for any purpose other than that for which it was originally intended. The user assumes all responsibility for any use and omission of the data. The user agrees to hold the South Dakota Department of Transportation harmless from any and all claims, damages, losses, and expenses, including reasonable attorneys' fees, arising from any use and omission of the data. This disclaimer shall survive the termination or expiration of any agreement between the user and the South Dakota Department of Transportation.

COPIES OF THIS MAP ARE AVAILABLE FOR PUBLIC USE AT A NOMINAL COST
 S.D. Department of Transportation
 Map Sales - PO BOX 773 5700
 Pierre, South Dakota 57502