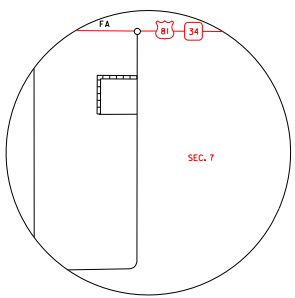
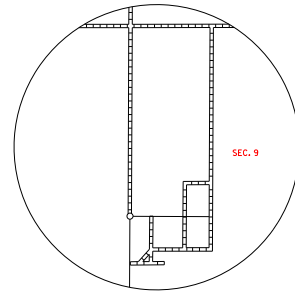


LEGEND

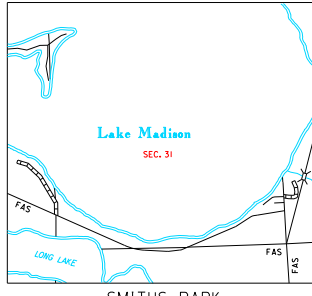
- INTERSTATE HIGHWAY (FULL CONTROL OF ACCESS)
- U.S. NUMBERED HIGHWAY
- STATE NUMBERED HIGHWAY
- FEDERAL AID HIGHWAY SYSTEM
- FEDERAL AID SECONDARY HIGHWAY SYSTEM
- END OF FEDERAL AID DESIGNATED ROUTE
- PRIMITIVE ROAD
- UNIMPROVED ROAD
- GRADED AND DRAINED ROAD
- GRAVEL OR STONE SURFACED ROAD
- HARD SURFACED ROAD
- DIVIDED HIGHWAY (WITH FRONTAGE ROAD)
- INTERCHANGE
- HIGHWAY GRADE SEPARATION
- POINTS BETWEEN WHICH DISTANCES ARE MEASURED INDICATED THIS
- RAILROAD
- RAILROADS IN JUNCTURE POSITION
- TWO OR MORE TRACKS OF SEPARATELY OPERATED COMPANIES ON ADJACENT RIGHT-OF-WAY
- RAILROAD CROSSINGS
- GRADE CROSSINGS
- RAILROAD ABOVE
- RAILROAD BELOW
- AIRPORT WITH SURFACED RUNWAYS
- MILITARY FIELD
- AIRPORT, COMPLETE FACILITIES (COMMERCIAL OR MUNICIPAL)
- AIRFIELD, LIMITED FACILITIES
- LANDING AREA OR STRIP
- INCLUDING PRIVATE AIR FIELDS
- AIRWAY LIGHT BEACON (GENERAL)
- NARROW STREAM (INTERMITTENT NAVIGATION)
- WIDE STREAM (INTERMITTENT NAVIGATION)
- DRAINAGE DITCH (MAN)
- IRRIGATION DITCH
- FAS
- RESERVOIR, POND OR LAKE
- RESERVOIR, WITH DAM
- DAM
- MARSH OR SWAMP LAND
- DOCK, PIER, OR LANDING
- HIGHWAY BRIDGE (OVER 20 FT. IN LENGTH)
- STEEL TRUSS BRIDGE LARGE
- CANTILEVER BRIDGE
- FORD - ROAD ESTABLISHED
- CONCRETE FORD
- CAUSEWAY
- CATTLE GUARD
- PROMONT ELEVATION
- STATE LINE
- COUNTY LINE
- CONGRESSIONAL TOWNSHIP LINE
- SECTION LINE
- FEDERAL AND STATE RESERVATION BOUNDARY LINE
- MONUMENT (SMALL)
- COUNTY SEAT
- OTHER CITIES AND VILLAGES
- UNINCORPORATED VILLAGE OR AREA OF CONGESTED CULTURE
- INCORPORATED CITY OR VILLAGE (FIGURES INDICATED 1990 POPULATION)



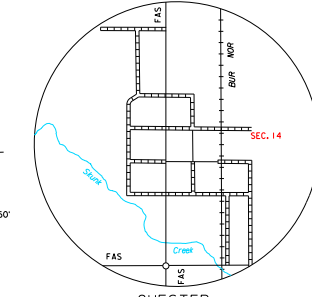
JUNIUS SEC. 7 - T 106 N - R 51 W SCALE IN MILES



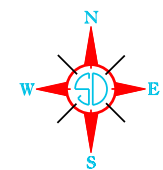
RUTLAND SEC. 9 - T 107 N - R 51 W SCALE IN MILES



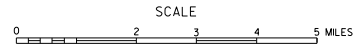
SMITHS PARK SEC. 31 - T 106 N - R 51 W SCALE IN MILES



CHESTER SEC. 14 - T 105 N - R 51 W SCALE IN MILES



GENERAL HIGHWAY MAP
LAKE COUNTY
SOUTH DAKOTA
 prepared by the
 SOUTH DAKOTA DEPARTMENT OF TRANSPORTATION
 in cooperation with the
 U.S. DEPARTMENT OF TRANSPORTATION
 FEDERAL HIGHWAY ADMINISTRATION



2021



UNIVERSAL TRANSVERSE MERCATOR PROJECTION

RESTRICTION OF LIABILITY: The South Dakota Department of Transportation makes no claims, promises or guarantees about the accuracy, completeness, or timeliness of the data and expressly disclaims liability for errors and omissions of the data content. No warranty of any kind, implied, expressed or statutory, including but not limited to the warranties of non-infringement of third party rights, title, merchantability and fitness for a particular purpose is given with respect to this data.

COPIES OF THIS MAP ARE AVAILABLE FOR PUBLIC USE AT A NOMINAL COST
 S.D. Department of Transportation
 Map Sales -- Ph: 605/773-3249
 Pierre, South Dakota 57508