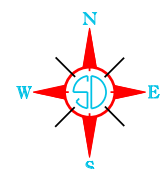


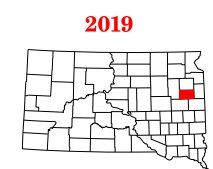
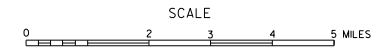
LEGEND

INTERSTATE HIGHWAY (FULL CONTROL OF ACCESS)		NARROW STREAM	
U.S. NUMBERED HIGHWAY		WIDE STREAM (INTERMITTENT NAVIGATION)	
STATE NUMBERED HIGHWAY		DRAINAGE DITCH (MAIN)	
FEDERAL AID HIGHWAY SYSTEM		IRRIGATION DITCH	
FEDERAL AID SECONDARY HIGHWAY SYSTEM		RESERVOIR, POND OR LAKE	
END OF FEDERAL AID DESIGNATED ROUTE		RESERVOIR, WITH DAM	
		DAM	
		MARSH OR SWAMP LAND	
PRIMITIVE ROAD		DOCK, PIER, OR LANDING	
UNIMPROVED ROAD		HIGHWAY BRIDGE (OVER 20 FT. IN LENGTH)	
GRAVEL OR STONE SURFACED ROAD		HIGHWAY BRIDGES CLOSELY SPACED	
HARD SURFACED ROAD		STEEL TRUSS BRIDGE LARGE	
DIVIDED HIGHWAY (WITH FRONTAGE ROAD)		CANTILEVER BRIDGE	
INTERCHANGE		FORD - ROAD ESTABLISHED	
HIGHWAY GRADE SEPARATION		CONCRETE FORD	
POINTS BETWEEN WHICH DISTANCES ARE MEASURED INDICATED THUS		CAUSEWAY	
		CATTLE GUARD	
RAILROAD		PROMINENT ELEVATION	
RAILROADS IN Juxtaposition		STATE LINE	
TWO OR MORE TRACKS OF SEPARATELY OPERATED COMPANIES ON ADJACENT RIGHT-OF-WAY		COUNTY LINE	
		CONGRESSIONAL TOWNSHIP LINE	
RAILROAD CROSSINGS		SECTION LINE	
GRADE CROSSINGS		FEDERAL AND STATE RESERVATION BOUNDARY LINE	
RAILROAD ABOVE		MONUMENT (SMALL)	
RAILROAD BELOW		COUNTY SEAT	
		OTHER CITIES AND VILLAGES	
AIRPORT WITH SURFACED RUNWAYS		UNINCORPORATED VILLAGE OR AREA OF CONGESTED CULTURE	
MILITARY FIELD		INCORPORATED CITY OR VILLAGE (FIGURES INDICATED 1990 POPULATION)	
AIRPORT, COMPLETE FACILITIES (COMMERCIAL OR MUNICIPAL)			
AIRFIELD, LIMITED FACILITIES			
LANDING AREA OR STRIP INCLUDING PRIVATE AIR FIELDS			
AIRWAY LIGHT BEACON (GENERAL)			

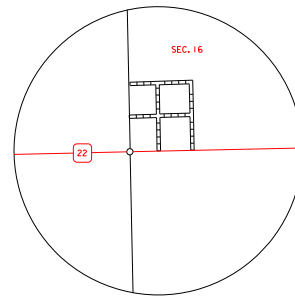


GENERAL HIGHWAY MAP
HAMLIN COUNTY
SOUTH DAKOTA

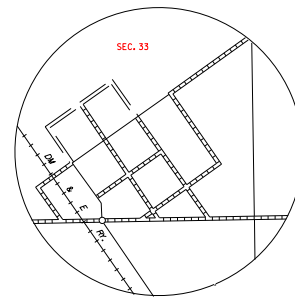
prepared by the
 SOUTH DAKOTA DEPARTMENT OF TRANSPORTATION
 in cooperation with the
 U.S. DEPARTMENT OF TRANSPORTATION
 FEDERAL HIGHWAY ADMINISTRATION



2019
 UNIVERSAL TRANSVERSE MERCATOR PROJECTION



THOMAS
 SEC. 16 - T 115 N - R 53 W
 SCALE IN MILES



DEMPSTER
 SEC. 33 - T 114 N - R 51 W
 SCALE IN MILES

RESTRICTION OF LIABILITY: The South Dakota Department of Transportation makes no claims, promises or guarantees about the accuracy, completeness or adequacy of the data and expressly disclaims liability for errors and omissions of the data content. No warranty of any kind, implied, expressed or statutory, including but not limited to the warranties of merchantability and fitness for a particular purpose is given with respect to this data.

COPIES OF THIS MAP ARE AVAILABLE FOR PUBLIC USE AT A NOMINAL COST
 S.D. Department of Transportation
 Map Sales -- Ph: 605/773 3249
 Pierre, South Dakota 57501