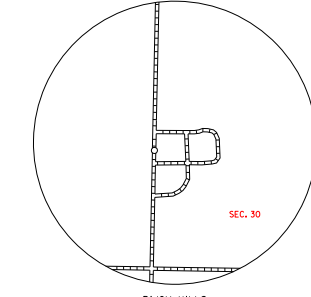
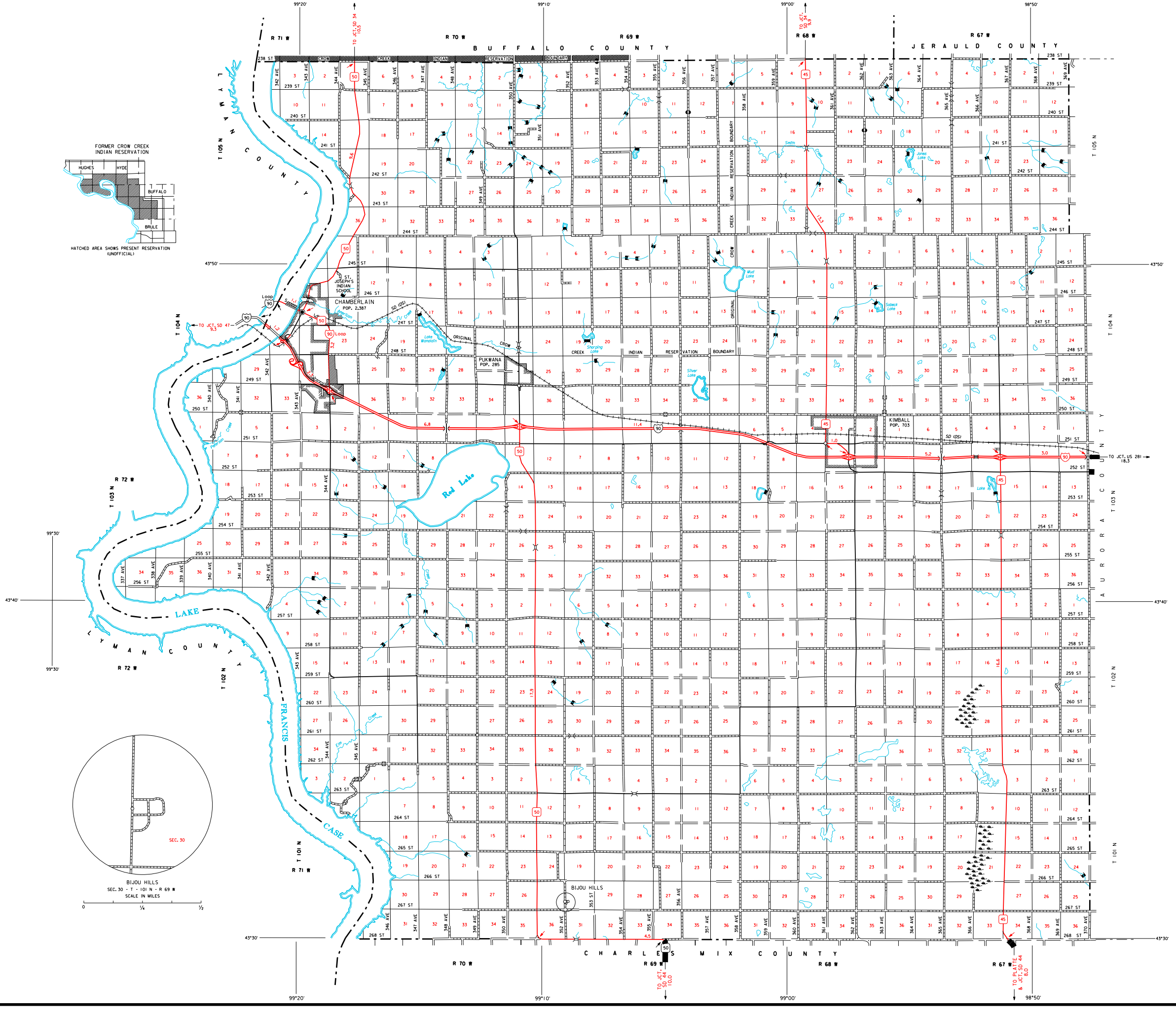


HATCHED AREA SHOWS PRESENT RESERVATION (UNOFFICIAL)

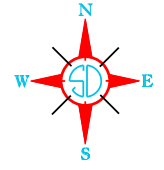


BIJOU HILLS  
SEC. 30 - T. 101 N - R. 69 W  
SCALE IN MILES



**LEGEND**

INTERSTATE HIGHWAY (FULL CONTROL OF ACCESS)		NARROW STREAM	
U.S. NUMBERED HIGHWAY		WIDE STREAM (INTERMITTENT NAVIGATION)	
STATE NUMBERED HIGHWAY		DRAINAGE DITCH (MAIN)	
FEDERAL AID HIGHWAY SYSTEM		IRRIGATION DITCH	
FEDERAL AID SECONDARY HIGHWAY SYSTEM		RESERVOIR, POND OR LAKE	
END OF FEDERAL AID DESIGNATED ROUTE		RESERVOIR, WITH DAM	
		DAM	
		MARSH OR SWAMP LAND	
PRIMITIVE ROAD		DOCK, PIER, OR LANDING	
UNIMPROVED ROAD		HIGHWAY BRIDGE (OVER 20 FT. IN LENGTH)	
GRAVEL OR STONE SURFACED ROAD		HIGHWAY BRIDGE CLOSELY SPACED	
HARD SURFACED ROAD		STEEL TRUSS BRIDGE LARGE	
DIVIDED HIGHWAY (WITH FRONTAGE ROAD)		CANTILEVER BRIDGE	
INTERCHANGE		FORD - ROAD ESTABLISHED	
HIGHWAY GRADE SEPARATION		CONCRETE FORD	
POINTS BETWEEN WHICH DISTANCES ARE MEASURED INDICATED THUS		CAUSEWAY	
		CATTLE GUARD	
RAILROAD		PROMONT ELEVATION	
RAILROAD IN JUNCTURE		STATE LINE	
TWO OR MORE TRACKS OF SEPARATELY OPERATED COMPANIES ON ADJACENT RIGHT-OF-WAY		COUNTY LINE	
		CONGRESSIONAL TOWNSHIP LINE	
RAILROAD CROSSINGS		SECTION LINE	
GRADE CROSSINGS		FEDERAL AND STATE RESERVATION BOUNDARY LINE	
RAILROAD ABOVE		MONUMENT (SMALL)	
RAILROAD BELOW		COUNTY SEAT	
		OTHER CITIES AND VILLAGES	
AIRPORT WITH SURFACED RUNWAYS		UNINCORPORATED VILLAGE OR AREA OF CONGESTED CULTURE	
		INCORPORATED CITY OR VILLAGE (FIGURES INDICATED 1990 POPULATION)	
MILITARY FIELD			
AIRPORT, COMPLETE FACILITIES (COMMERCIAL OR MUNICIPAL)			
AIRFIELD, LIMITED FACILITIES			
LANDING AREA OR STRIP INCLUDING PRIVATE AIR FIELDS			
ARMY LIGHT BEACON (GENERAL)			

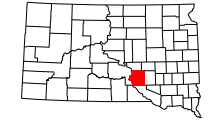


# GENERAL HIGHWAY MAP BRULE COUNTY SOUTH DAKOTA

prepared by the  
SOUTH DAKOTA DEPARTMENT OF TRANSPORTATION  
in cooperation with the  
U.S. DEPARTMENT OF TRANSPORTATION  
FEDERAL HIGHWAY ADMINISTRATION

SCALE  
0 1 2 3 4 5 MILES

2019



UNIVERSAL TRANSVERSE MERCATOR PROJECTION

RESTRICTION OF LIABILITY: The South Dakota Department of Transportation makes no claims, promises or warranties about the accuracy, completeness or adequacy of the data and expressly disclaims liability for errors and omissions of the data content, no warranty of any kind, implied, expressed or statutory, including but not limited to the warranties of non-infringement of third party rights, title, merchantability and fitness for a particular purpose is given with respect to this data.

COPIES OF THIS MAP ARE AVAILABLE FOR PUBLIC USE AT A NOMINAL COST  
S.D. Department of Transportation  
Map Sales -- Ph: 605/773 3249  
Pierre, South Dakota 57501