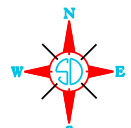
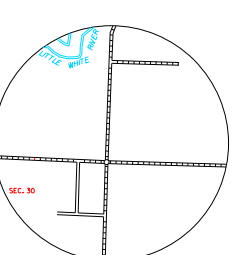
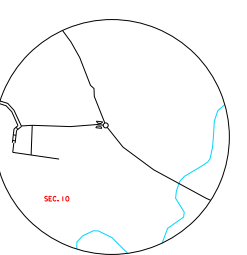
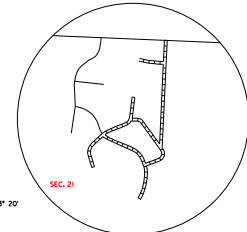


LEGEND

- INTERSTATE HIGHWAY FULL CONTROL OF ACCESS
- U.S. NUMBERED HIGHWAY
- STATE NUMBERED HIGHWAY
- FEDERAL AID HIGHWAY SYSTEM
- FEDERAL AID SECONDARY HIGHWAY SYSTEM
- END OF FEDERAL AID DESIGNATED ROUTE
- PRIMITIVE ROAD
- GRAVEL AND GRADED ROAD
- GRAVEL OR STONE SURFACED ROAD
- HARD SURFACED ROAD
- DIVIDED HIGHWAY (LEFT DRIVEWAY ROAD)
- INTERCHANGE
- HIGHWAY GRADE SEPARATION
- POINTS BETWEEN WHICH DISTANCES ARE MEASURED INDICATED THIS
- RAILROAD
- RAILROADS IN JUNCTION
- TWO OR MORE TRACKS OF SEPARATELY OPERATED COMPANIES OR SEPARATE RIGHT-OF-WAY
- RAILROAD CROSSINGS
- GRADE CROSSINGS
- RAILROAD ABOVE
- RAILROAD BELOW
- RAILROAD WITH SURFACED RUNWAYS
- MILITARY FIELD
- AIRPORT, COMPLETE FACILITIES (COMMERCIAL OR MUNICIPAL)
- AIRFIELD, LIMITED FACILITIES
- LANDING AREA OR STRIP INCLUDING PRIVATE AIR FIELDS
- ARMY LIGHT BEACON (GENERAL)
- NARROW STREAM
- WIDE STREAM (INTERNATIONAL NAVIGATION)
- DRAINAGE DITCH (MAIN)
- IRRIGATION DITCH
- FA RESERVOIR, POND OR LAKE
- RESERVOIR, WITH DAM
- DAM
- WASH OR STAMP LAKE
- DOCK, PIER, OR LANDING
- HIGHWAY BRIDGE (OVER 20 FT. IN LENGTH)
- HIGHWAY BRIDGES CLOSELY SPACED
- STEEL TRUSS BRIDGE LARGE
- CANTILEVER BRIDGE
- FOOD - ROAD ESCALABOND
- CONCRETE FORD
- CAUSEWAY
- CATTLE GUARD
- PROMINENT ELEVATION
- STATE LINE
- COUNTY LINE
- SECTION LINE
- FEDERAL AND STATE RESERVATION BOUNDARY LINE
- MOUNTAIN (SMALL)
- MOUNTAIN
- OTHER CITIES AND VILLAGES
- UNINCORPORATED VILLAGE OR AREA OF CONCRETE CATTLE
- INCORPORATED CITY OR VILLAGE (FIGURES INDICATE 1990 POPULATION)

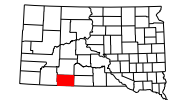


GENERAL HIGHWAY MAP
BENNETT COUNTY
 SOUTH DAKOTA

prepared by the
 SOUTH DAKOTA DEPARTMENT OF TRANSPORTATION
 in cooperation with the
 U.S. DEPARTMENT OF TRANSPORTATION
 FEDERAL HIGHWAY ADMINISTRATION

SCALE
 0 1 2 3 4 5 MILES

2019



UNIVERSAL TRANSVERSE MERCATOR PROJECTION

CADD PRODUCED BY
 CARTOGRAPHIC SECTION
 SOUTH DAKOTA DEPARTMENT OF TRANSPORTATION

RESTRICTION OF LIABILITY: The South Dakota Department of Transportation makes no claim, guarantee, or warranty of the accuracy, completeness, or timeliness of the data and proprietary information contained herein and assumes no liability for any errors, omissions, or inaccuracies in the data. The user of this map assumes all responsibility for its use and for any damage or loss resulting from its use. This map is provided for informational purposes only and is not intended for use in any legal proceeding.

COPIES OF THIS MAP ARE AVAILABLE FOR PUBLIC USE AT A NOMINAL COST
 S. D. Department of Transportation
 Map Sales -- Ph: 605/773-3249
 Permit: South Dakota 2019