

CITY MAP  
**ST. LAWRENCE**  
 HAND COUNTY - SOUTH DAKOTA  
 T 112 N - R 67 - 68 W

SCALE  
 0 300ft.

POP. 198 (2010)

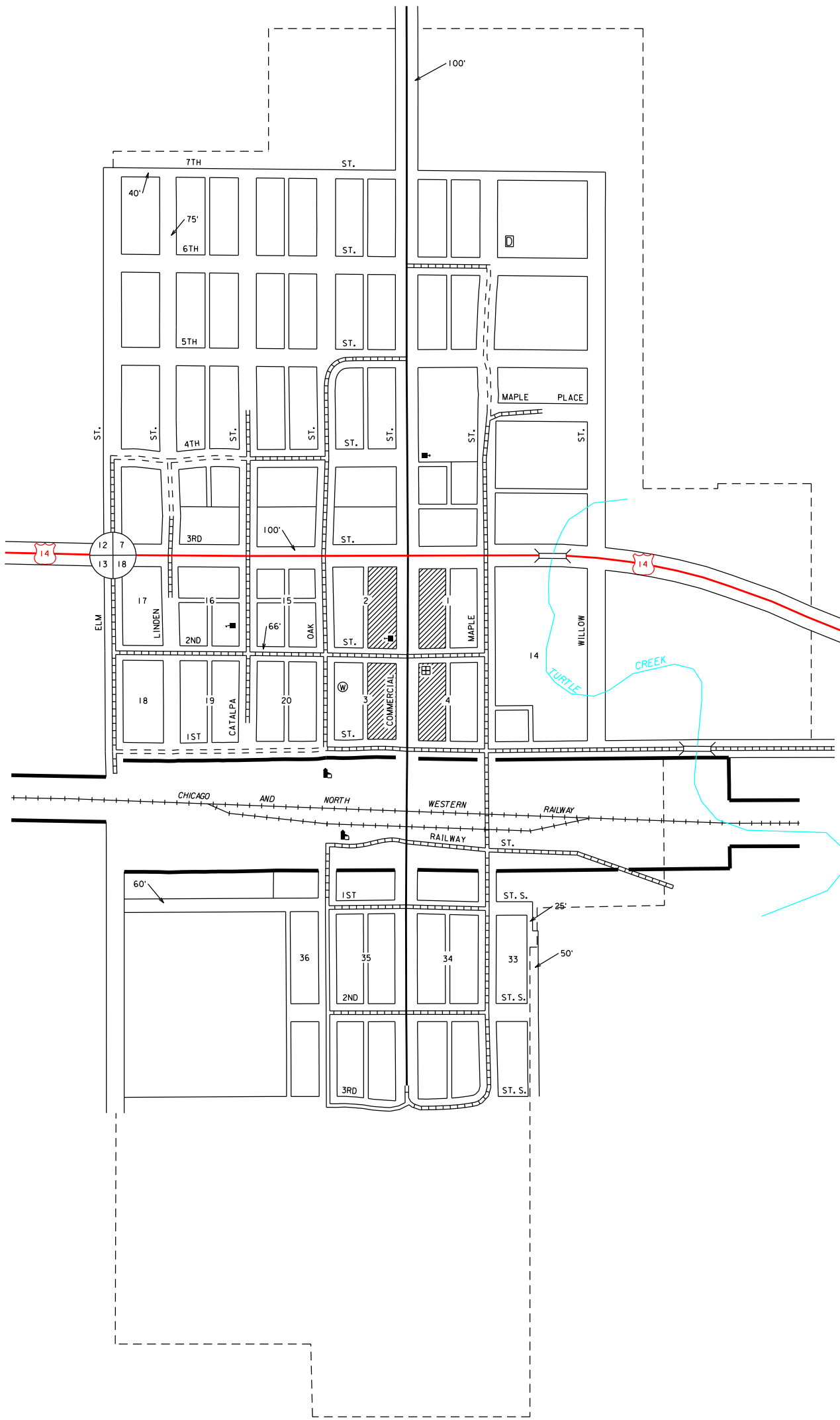
2017

PREPARED BY

**SOUTH DAKOTA**  
**DEPARTMENT OF TRANSPORTATION**  
 IN COOPERATION WITH  
**U.S. DEPARTMENT OF TRANSPORTATION**  
**FEDERAL HIGHWAY ADMINISTRATION**  
 ALL STREET RIGHT OF WAY 80 FT.  
 ALLEYS 20 FT.  
 (UNLESS OTHERWISE INDICATED)  
 (UNOFFICIAL EDITION)

**LEGEND**

U.S. NUMBERED HIGHWAY	
U.S. NUMBERED INTERSTATE HIGHWAY	
STATE NUMBERED HIGHWAY	
STREAMS, CREEKS, AND OTHER WATERWAYS	
CANALS, LATERALS, IRRIGATION DITCHES WITH DIRECTION OF FLOW	
HARD SURFACE	
GRAVEL SURFACE	
EARTH SURFACE	
UNIMPROVED	
TRAIL	
GRADE	
CENTRAL BUSINESS DISTRICT	
TOWN CENTER (COUNTY SEAT)	
CITY LIMITS	
RAILROAD	
GRAIN ELEVATOR	
SWIMMING POOL	
BALL FIELD	
CEMETERY	
HOSPITAL	
HIGHWAY GARAGE (C-COUNTY, S-STATE)	
POST OFFICE	
CHURCH	
LIBRARY	
POWER PLANT	
WATER SUPPLY STAND PIPE OR TANK	
MUNICIPAL BUILDING	
BULK PLANT	
FIREHALL	
SCHOOLHOUSE	
TOWNHALL	
MUSEUM	
POLICE STATION	
AIRPORT	



RESTRICTION OF LIABILITY: The South Dakota Department of Transportation makes no claim, promise or guarantee about the accuracy, completeness or adequacy of the data and expressly disclaims liability for errors and omissions of the data content. No warranty of any kind, implied, expressed or statutory, including but not limited to the warranties of non-infringement of third party rights, title, merchantability and fitness for a particular purpose is given with respect to this data.