

CITY MAP

MONROE

TURNER COUNTY - SOUTH DAKOTA

T 100 N - R 54 W

SCALE



POP. 160 (2010)

2017

PREPARED BY

**SOUTH DAKOTA
DEPARTMENT OF TRANSPORTATION**

IN COOPERATION WITH

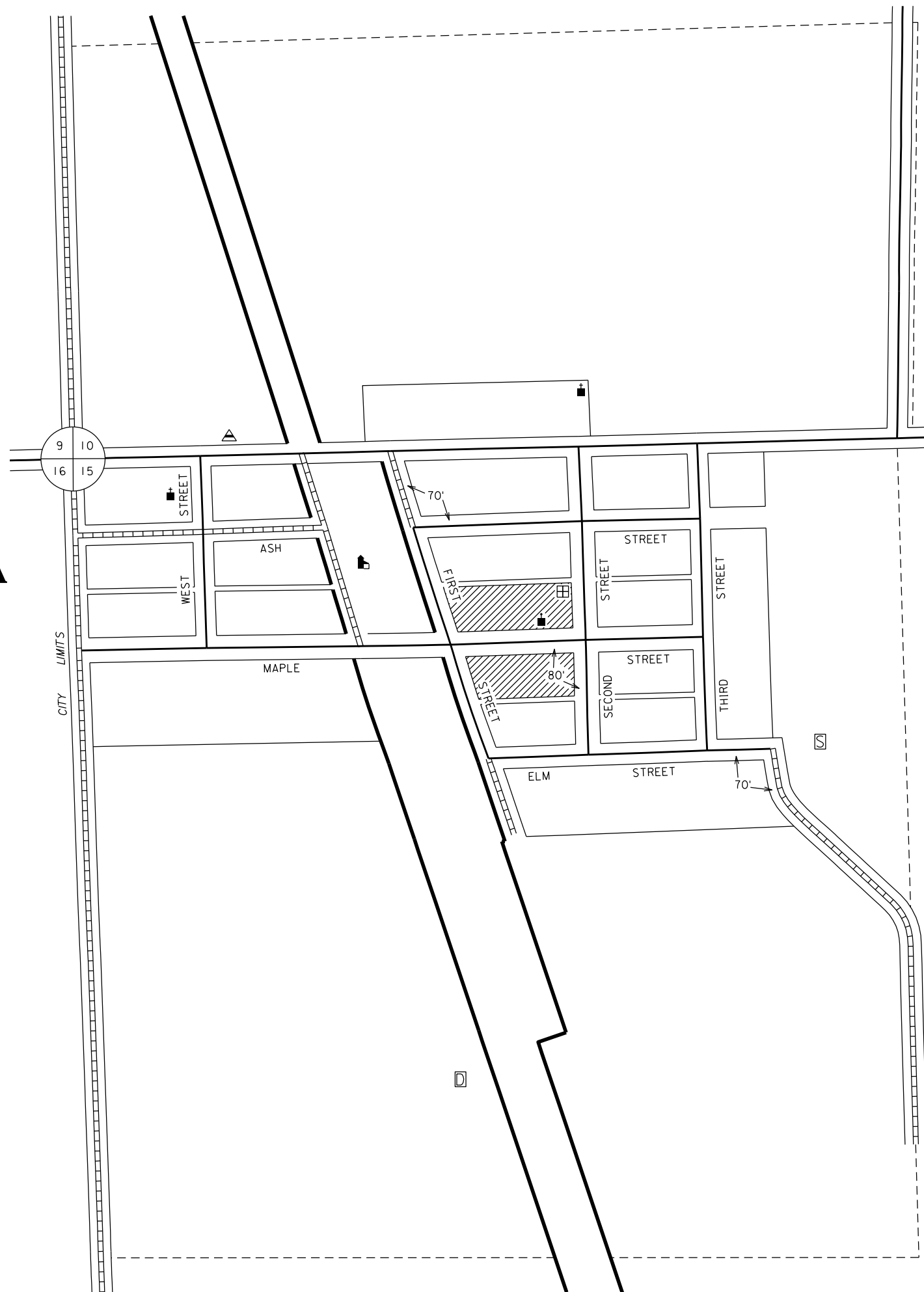
**U.S. DEPARTMENT OF TRANSPORTATION
FEDERAL HIGHWAY ADMINISTRATION**

ALL STREET RIGHT OF WAY 66 FT.

ALLEYS 16 FT.

(UNLESS OTHERWISE INDICATED)

(UNOFFICIAL EDITION)



LEGEND

U.S. NUMBERED HIGHWAY	---	
U.S. NUMBERED INTERSTATE HIGHWAY	---	
STATE NUMBERED HIGHWAY	---	
STREAMS, CREEKS, AND OTHER WATERWAYS	---	
CANALS, LATERALS, IRRIGATION DITCHES WITH DIRECTION OF FLOW	---	
HARD SURFACE	---	
GRAVEL SURFACE	---	
EARTH SURFACE	---	
UNIMPROVED	---	
TRAIL	---	
GRADE	---	
CENTRAL BUSINESS DISTRICT	---	
TOWN CENTER (COUNTY SEAT)	---	
CITY LIMITS	---	
RAILROAD	---	
GRAIN ELEVATOR	---	
SWIMMING POOL	---	
BALL FIELD	---	
CEMETERY	---	
HOSPITAL	---	
HIGHWAY GARAGE (C-COUNTY, S-STATE)	---	
POST OFFICE	---	
CHURCH	---	
LIBRARY	---	
POWER PLANT	---	
WATER SUPPLY STAND PIPE OR TANK	---	
MUNICIPAL BUILDING	---	
BULK PLANT	---	
FIREHALL	---	
SCHOOLHOUSE	---	
TOWNHALL	---	
MUSEUM	---	
POLICE STATION	---	
AIRPORT	---	

RESTRICTION OF LIABILITY: The South Dakota Department of Transportation makes no claims, promises or guarantees about the accuracy, completeness, or adequacy of the data and expressly disclaims liability for errors and omissions of the data content. No warranty of any kind, implied, expressed or statutory, including but not limited to the warranties of non-infringement of third party rights, title, merchantability and fitness for a particular purpose is given with respect to this data.