



DEPARTMENT OF
TRANSPORTATION

S.D. Highway 1889 Weekly Update June 22, 2026



Weekly Meeting:

Weekly Meetings to be held at AGC Building at
300 E Capitol Ave, Suite 1. Enter through side
door on S. Highland Street.

Time: 11:00 AM

Day: Wednesdays

Facebook Live Stream: KCCR Radio

KCCR and DRG will keep you up to date with any
traffic changes and progress of the project!





S.D. Highway 1889 (Euclid Ave) 2026 Construction Schedule

Phase 3A & Elizabeth Street:
Early March to Late July 2026

Wynoka:
Completed

Phase 4A:
Early March to Mid-July 2026

Phase 3C:
Mid-June to Mid-Aug. 2026

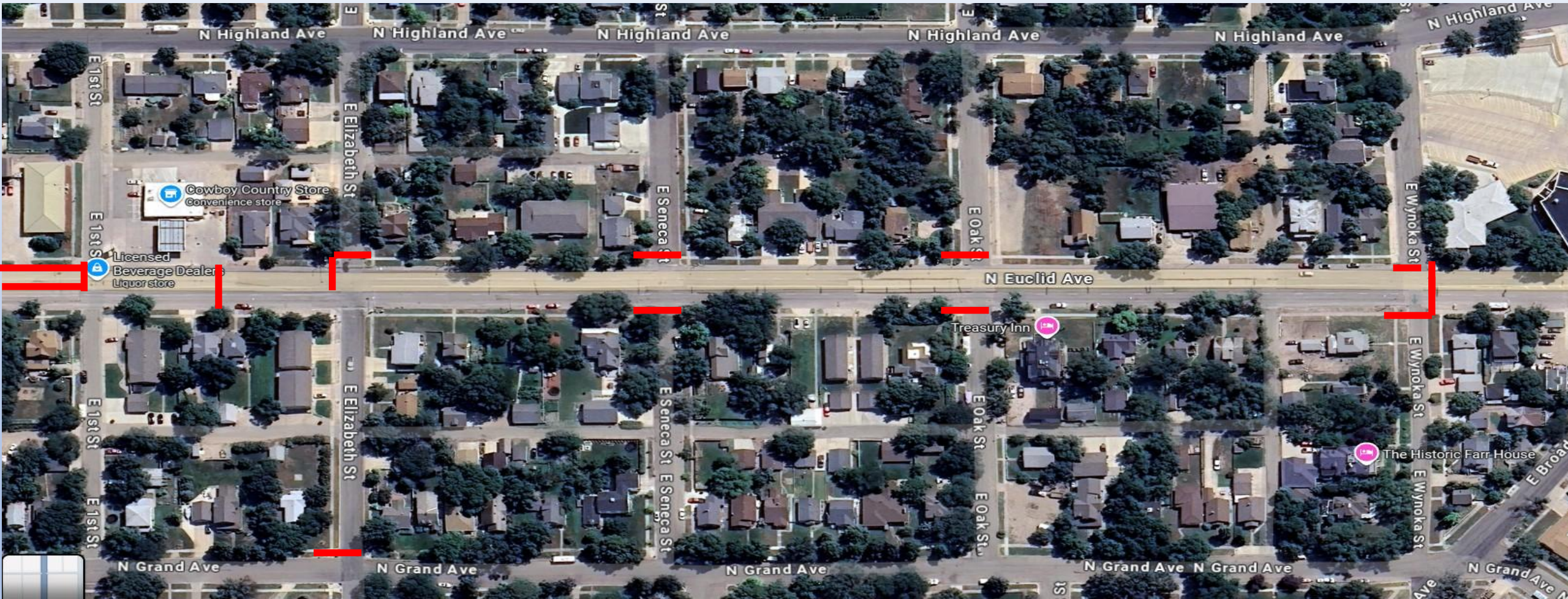
Phase 3B:
Early Aug. to Late Nov. 2026

Phase 4B:
Early Aug. to Late Nov. 2026

Schedule is weather-dependent

Closure locations from E Wynoka St. to Elizabeth St.

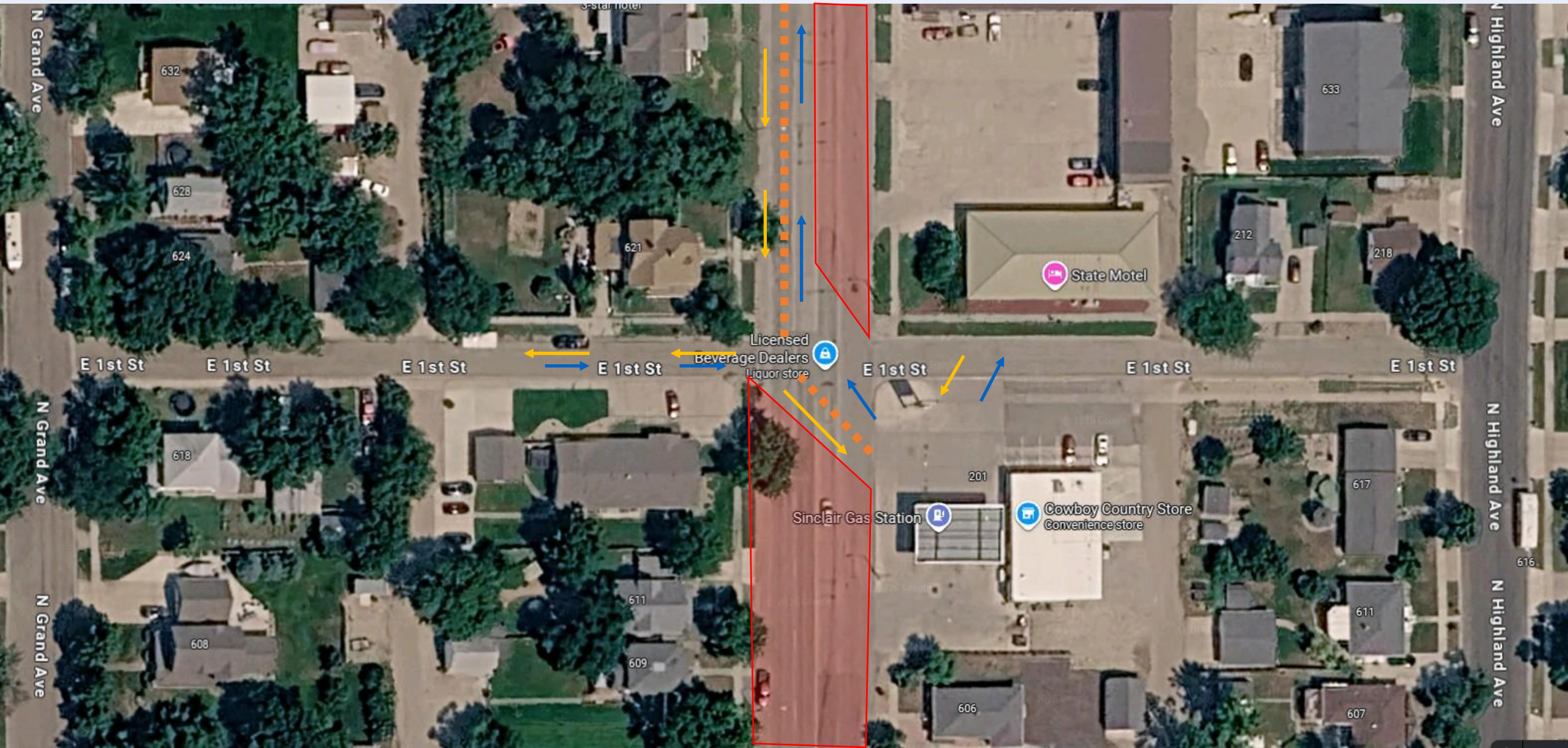
- S.D. Highway 1889 (Euclid Ave.) fully closed from Wynoka St. to Elizabeth St.



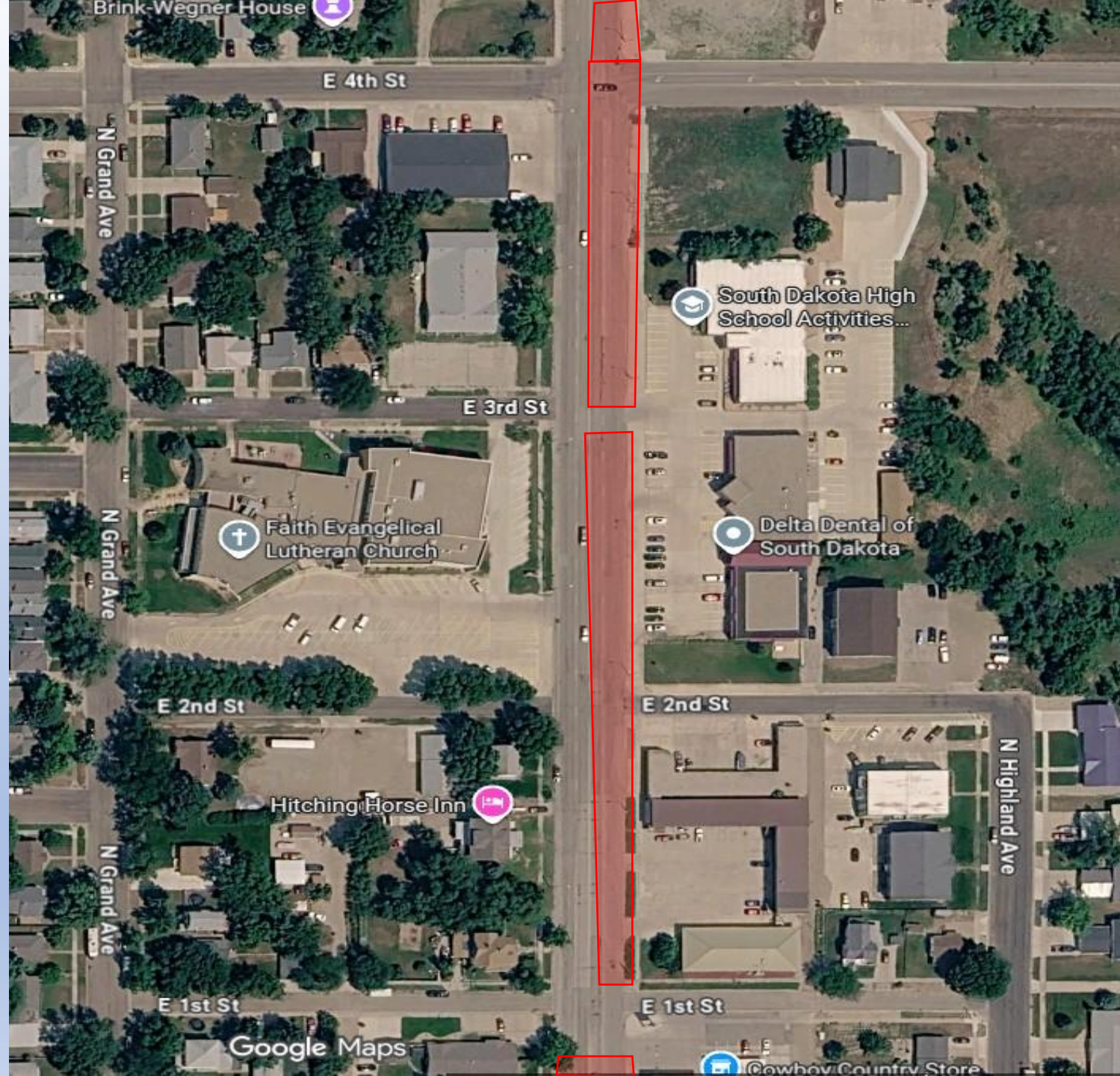
- Asphalt paving Wynoka St. to Oak begins 6/24
- First St. intersection is open
- Elizabeth St. curb and gutter beginning

- Cowboy Country Store has access from Euclid Ave., Highland Ave., and First St.
- Maher Dental has access from Euclid Ave., Grand Ave., and First St.

- Two-way traffic on southbound lanes of Euclid Ave.
- East First St. is open from Euclid Ave. to North Grand Ave.
- East First St. from Euclid Ave. to North Highland Ave. is open to local traffic only

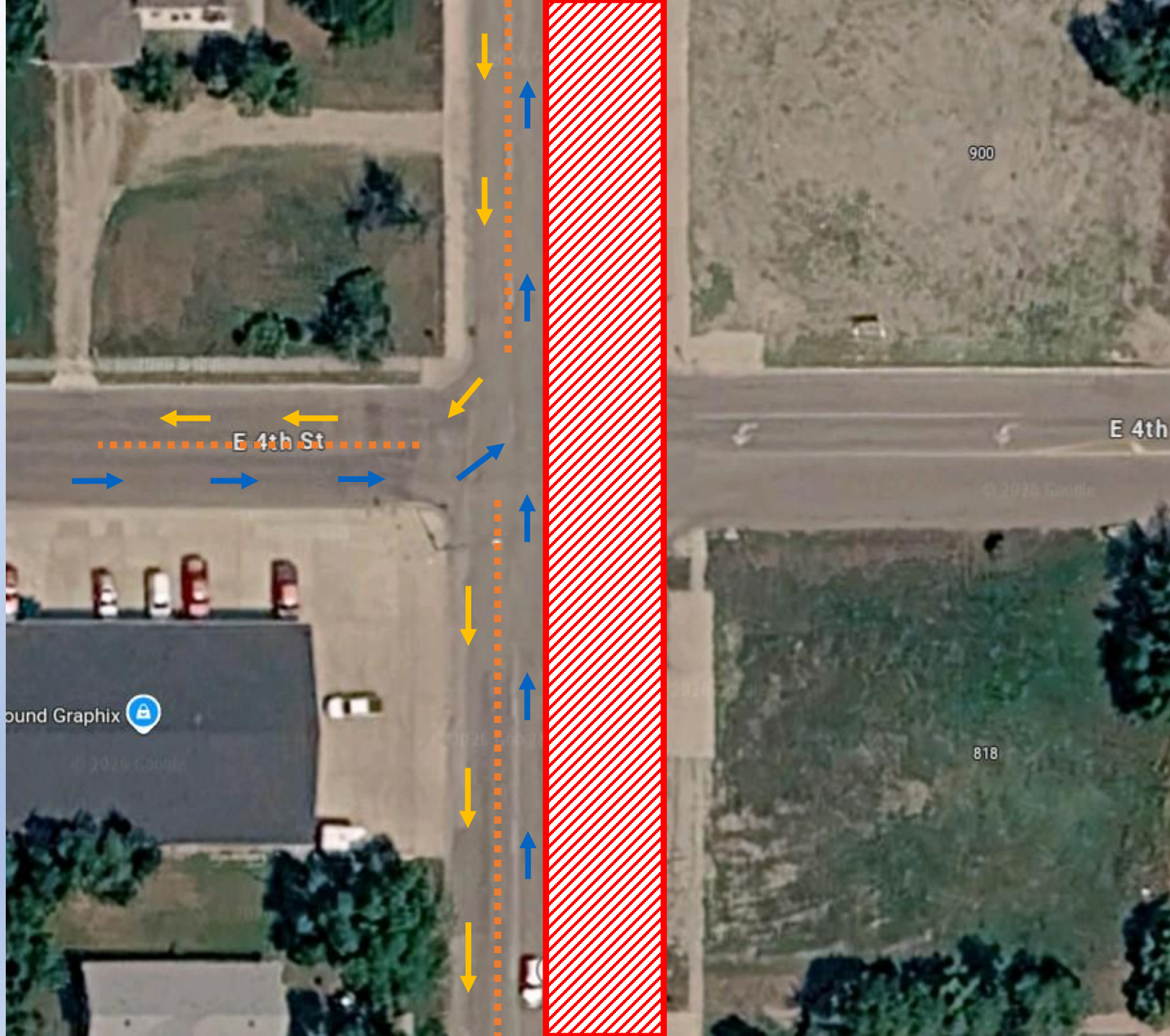


- Northbound lanes of Euclid Ave. closed from East First St. to North of 8th St.
- The East leg of the Euclid and 4th street intersection will be closing to thru traffic the week of June 29, 2026, until mid-July.



East leg closure
of 4th St. &
Euclid Ave.
begins Monday,
June 29, 2026.

West side of
Euclid Ave. and
4th ST. will remain
open



East side of Euclid
Ave. and 4th St.
will be closed until
mid-July

Closure begins Monday, June 29, 2026



Road closed to thru traffic from Governors Drive to Euclid Avenue

Update!

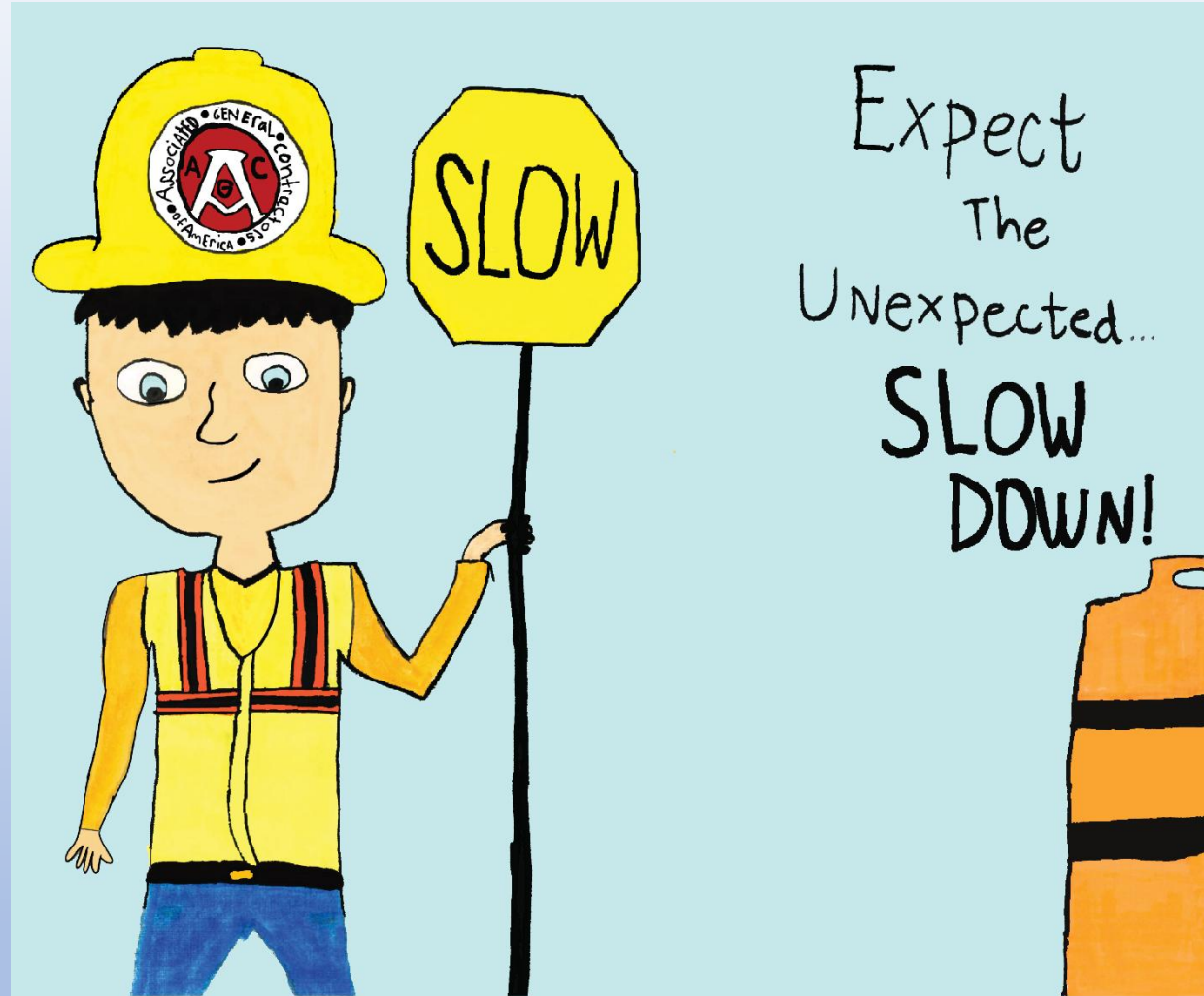
- S.D. Highway 1889 (Euclid Ave.) fully closed from Broadway Ave. to Elizabeth St.
- Elizabeth St. West of S.D. Highway 1889 (Euclid Ave.) closed
- Businesses are accessible from Euclid Ave.
- Northbound Lanes from 1st Street to north of 8th St. are closed
- East side of Euclid and 4th St. closed to thru traffic beginning Monday, June 29, 2026.
- City of Pierre Relocating water line near Delta Dental
- Asphalt paving starting Wednesday, June 24, 2026, from Wynoka to Oak St.



Text

Notifications:

For updates on major traffic changes during the project, subscribe to a free text-in service. To subscribe, text "EUCLID" to 605-566-4041. Subscribers can unsubscribe at any time.



4th Grade
Work Zone
Awareness
Artwork Winner

Stella

Jefferson Elementary



SOUTH DAKOTA

