

APPENDIX B

PUBLIC UTILITIES CORRESPONDENCE

- 1) 10/3/06 Letter from HDR to East River Electric Cooperative, Inc.
- 2) 11/08/06 Telephone Record – HDR and East River Electric Cooperative, Inc.
- 3) 11/15/06 Letter from East River Electric Cooperative, Inc. to HDR
- 4) 2/24/09 E-mail and graphic regarding power pole relocation
- 5) 4/13/09 E-mail with notes from 4/7/09 meeting with utility companies

October 3, 2006

East River Electric Power Cooperative, Inc.
PO Box 227
121 SE First Street
Madison, SD 57042-0227
Attn: Dan Wall

Re: Watertown South Connector Roadway Project

Dear Mr. Wall:

The South Dakota Department of Transportation (SDDOT), with the support of the City of Watertown, is proposing to construct a high volume roadway around the south side of Watertown. The roadway is called the South Connector. HDR is providing design and environmental assessment services for the project. Enclosed, please find an informational brochure regarding the project. Also enclosed is a graphic illustrating the alignments being considered for the South Connector.

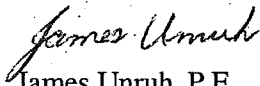
It is our understanding that East River Electric Power Cooperative owns the distribution power line on the south side of existing 20th Avenue. The design calls for relocation of the distribution line to approximately 80 feet south of its existing location as indicated on the enclosed graphic "Public Utilities Impacts".

We are currently preparing an Environmental Assessment on Segment 1 of the South Connector project. Separate Environmental Assessments will be prepared for Segments 2A and 2B. To adequately address the impacts of the project, the cost of relocating the power line needs to be determined. Could you prepare a rough cost estimate for relocation of the power line? Other helpful information would be the age, capacity, and condition of the existing power line.

Please address your response to me and feel free to contact me if you have any questions.

Sincerely,

HDR ENGINEERING, INC.



James Unruh, P.E.
Project Manager

Enclosures

Project: Watertown South Connector	Project No: 39319
Date: 11 08 06	Subject: utility relocations
Call to: James Unruh	Phone No: (605) 977-7740
Call from: Todd Copland and Dan Wall East River Electric Power Cooperative	Phone No: 605-256-8029

Discussion, Agreement and/or Action:

Specific relocation costs for the distribution power line along the south side of 20th Avenue have not been determined. Generic costs would be:

- \$100,000 per mile for relocations
- \$30,000 per mile for removals
- \$10,000 to \$12,000 additional for power line to follow a roadway curve.

For Segment 2A, there are some significant switching structures/mechanisms just south of the Highway 20/U.S. 212 intersection that could be impacted by the proposed South Connector. East River Electric will provide HDR with additional information.

RECEIVED NOV 16 2006



EAST RIVER

ELECTRIC POWER COOPERATIVE

121 Southeast First St.
Madison, SD 57042

P.O. Box 227
Telephone (605) 256-4536

November 15, 2006

Mr. James Unruh, P.E.
HDR Engineering, Inc.
6300 S. Old Village Place
Suite 100
Sioux Falls, SD 57108-2102

RE: Watertown South Connector Roadway Project

Dear Mr. Unruh:

Per your request, we enclose two copies of aerial photos of your Segment 2A of the Watertown project, with East River's existing transmission line drawn in. On one of the copies, we have overlaid the various project options.

Items in Segment 2A of your project, which I would like to bring to your attention are:

- A. The poles numbered on these aerial photos, #68 through #73A, are owned by the City of Watertown and through a Joint Use Pole Agreement, dated October 12, 1998, East River's transmission line shares the structures with Watertown's transmission line.
- B. On the west end of Segment 2A, East River has four line switch structures. (Pole numbers 77A, 78, 79 and Pole #1 for East River's line described as Sec7-Tap2) These three switch structures are the starting point of East River's transmission line, which serves the Cities of Waverly, Rauville and Florence. As this is the only transmission line serving these Cities, relocation of these facilities to accommodate your project could possibly result in electric outages to these Cities. Likewise, East River's poles #79, 80, 81, 82 and 83, located north of the switch poles, are part of the line serving the three Cities and relocation of these facilities will likewise cause outages for the Cities.
- C. Pole #80 has both East River's transmission line and the City of Watertown's east-west transmission line located on the structure

We recently reviewed, over the phone, East River's existing transmission line involvement in Segment 1 of your project. I want to reiterate several points that were discussed at that time.



- A. East River's transmission line does run along the south side of this project. East River does have easements for its line, which we believe is located on private property. With the exception of one pole for each of the two pole structures originally built to support the line conductor crossing over the railroad. (The railroad was subsequently removed and as a result single pole structures are all that is needed in the future)

- B. There are three areas within Segment 1, which, in their present state, will not allow East River to move its transmission line 80 feet to the south. (Beginning on the east end of Segment 1 and going west)
 - 1. There is a farmstead, comprised of a house, barn and silos. However, you indicated in our phone conversation that the house, barn and silos would be removed to accommodate your project.
 - 2. The sewer lagoons located in the middle of Segment 1.
 - 3. The residence with the berm built around it.

If you have any questions about this information feel free to contact me or Ken Booze, East River's Planning/Design Engineer, at this office.

Sincerely,

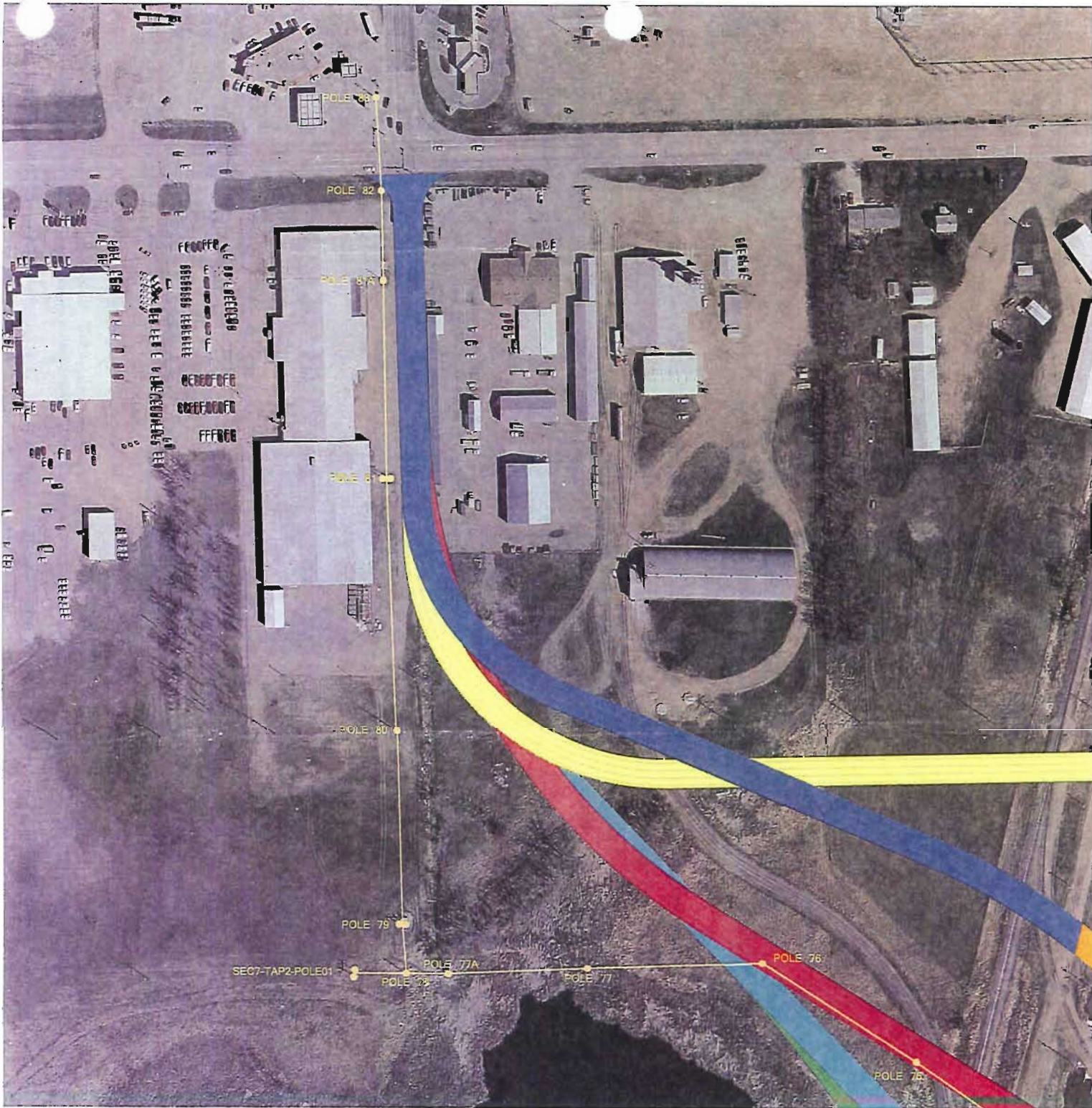


Dan Wall, Manager
Transmission/Engineering Services

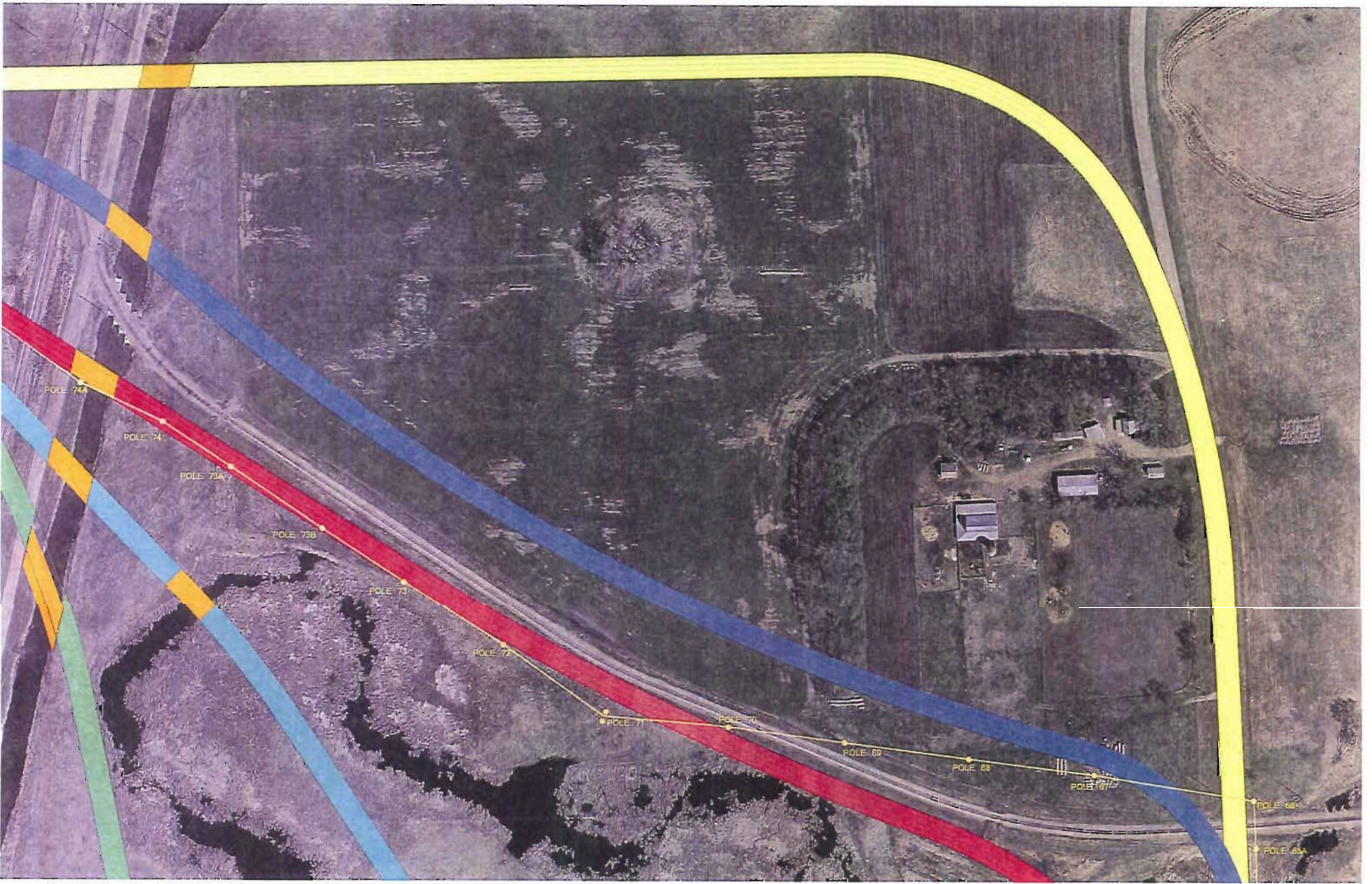
DW/jc

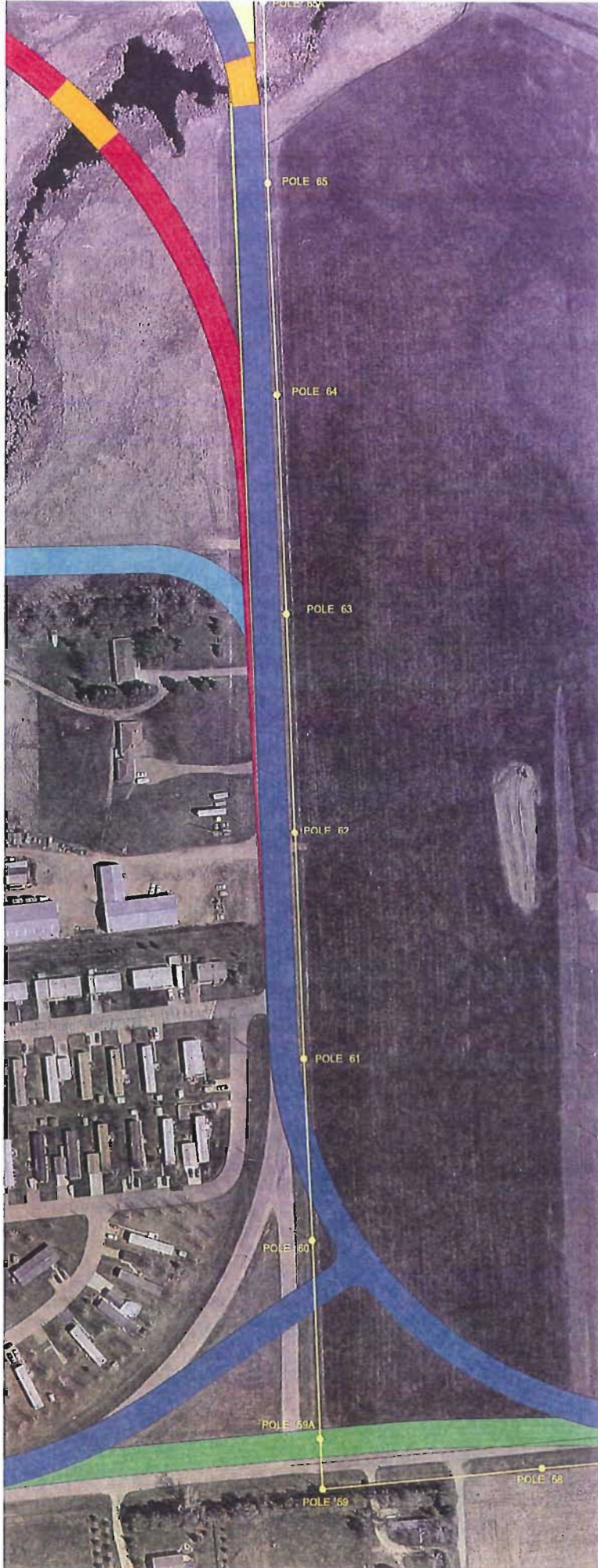
Enc.

cc: Bob Johnson



N ↑





N
↑



Unruh, James

From: Unruh, James
Sent: Tuesday, February 24, 2009 3:47 PM
To: 'John.Fuglsang@state.sd.us'
Cc: Neil.Schochenmaier@state.sd.us; Terry.Keller@state.sd.us; Baker, Rebecca
Subject: RE: Codn 00RW (Watertown South Connector) topography file
Follow Up Flag: Follow up
Flag Status: Purple

After further review of the recently-received topography file for segment 2A, we recommend that:

- the Option 3 roadway alignment remain as previously designed
- approximately 9 East River Electric power poles be relocated between the Option 3 roadway and the rail spur

Realigning the roadway to miss the East River Electric power poles would cause significant impacts to the wetland on the Pelican Lake Game Production Area. This is also a 4(f) property to which we have, to this point, minimized impacts. Realigning the Option 3 roadway would also cause additional impacts to wetlands and the Pelican Lake Cut-off Channel that may be difficult to justify.

We have prepared a graphic (attached to this e-mail) that identifies the additional power pole relocations. Please review the graphic. Let's then have a follow-up conference call to strategize next steps.

James Unruh, P.E.

HDR ONE COMPANY | *Many Solutions*

6300 South Old Village Place, Suite 100 | Sioux Falls, SD | 57108

Phone Direct: 605.977.7766 | Phone Main: 605.977.7740 | Fax: 605.977.7747 | Email: james.unruh@hdrinc.com

From: John.Fuglsang@state.sd.us [mailto:John.Fuglsang@state.sd.us]
Sent: Friday, February 20, 2009 4:01 PM
To: Unruh, James
Cc: Neil.Schochenmaier@state.sd.us; Terry.Keller@state.sd.us
Subject: RE: Codn 00RW (Watertown South Connector) topography file

Beings the DOT is now starting design work on this project I wonder if we shouldn't supply you with the alignment, once we have it set? Then you could adjust the EA based on our alignment. Now that we have actual topography information we are able to tweak the alignment to best fit. We are currently studying the impacts of keeping the alignment as originally proposed or shifting it south to avoid the power poles. There has also been discussion on what would be the best location for the alignment as it crosses the Agriliance spur line and the BNSF line.

-----Original Message-----

From: Unruh, James [mailto:James.Unruh@hdrinc.com]
Sent: Friday, February 20, 2009 3:44 PM
To: Fuglsang, John
Subject: RE: Codn 00RW (Watertown South Connector) topography file

John,
 We were unable to complete the revision of the Option 3 alignment this week. We will get a product to you the week of February 23.
 James U.

From: Unruh, James
Sent: Friday, February 13, 2009 2:17 PM
To: 'John.Fuglsang@state.sd.us'
Subject: RE: Codn 00RW (Watertown South Connector) topography file

John,

4/23/2009

We have not forgotten about the Option 3 alignment revisions along the rail spur. We should have a revised alignment to you the week of February 16.

Attached, for your file, please find brief notes from our phone conversation several weeks ago.

James Unruh, P.E.

HDR ONE COMPANY | *Many Solutions*

6300 South Old Village Place, Suite 100 | Sioux Falls, SD | 57108

Phone Direct: 605.977.7766 | Phone Main: 605.977.7740 | Fax: 605.977.7747 | Email:

james.unruh@hdrinc.com

From: Unruh, James

Sent: Tuesday, January 27, 2009 11:11 AM

To: 'John.Fuglsang@state.sd.us'

Subject: RE: Codn 00RW (Watertown South Connector) topography file

[File has been downloaded. Thanks.](#)

From: John.Fuglsang@state.sd.us [mailto:John.Fuglsang@state.sd.us]

Sent: Tuesday, January 27, 2009 11:07 AM

To: Unruh, James

Subject: Codn 00RW (Watertown South Connector) topography file

Here is a link to the topog file on the FTP server. This file does have the overhead power lines in it as well.

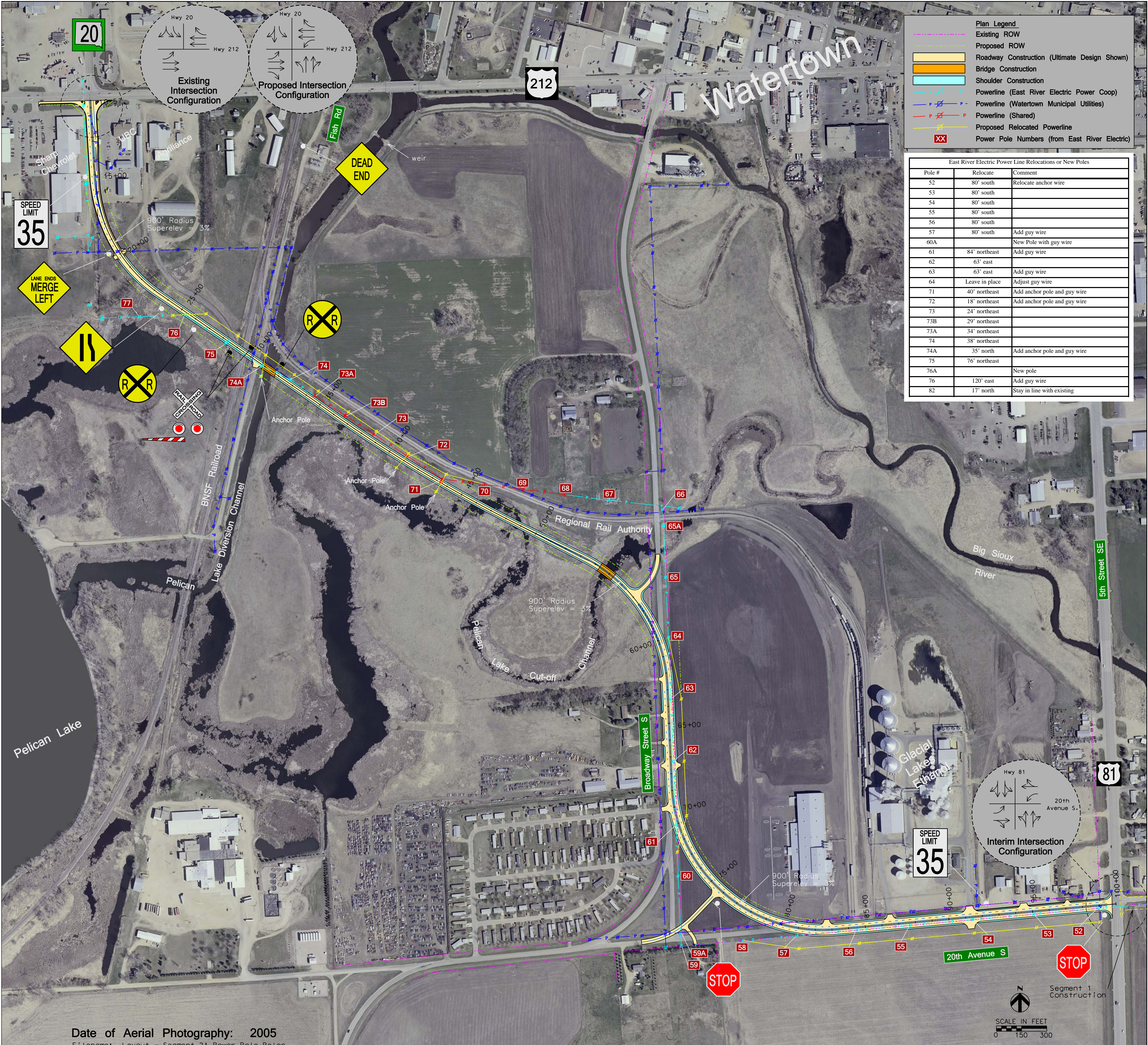
<ftp://ftp.state.sd.us/DOT/rd/prj/Codn00RV/t00RWsu.dgn>

John Fuglsang

Office of Road Design

605.773.4435

john.fuglsang@state.sd.us



Plan Legend

- Existing ROW
- Proposed ROW
- Roadway Construction (Ultimate Design Shown)
- Bridge Construction
- Shoulder Construction
- Powerline (East River Electric Power Coop)
- Powerline (Watertown Municipal Utilities)
- Powerline (Shared)
- Proposed Relocated Powerline
- Power Pole Numbers (from East River Electric)

East River Electric Power Line Relocations or New Poles		
Pole #	Relocate	Comment
52	80' south	Relocate anchor wire
53	80' south	
54	80' south	
55	80' south	
56	80' south	
57	80' south	Add guy wire
60A		New Pole with guy wire
61	84' northeast	Add guy wire
62	63' east	
63	63' east	Add guy wire
64	Leave in place	Adjust guy wire
71	40' northeast	Add anchor pole and guy wire
72	18' northeast	Add anchor pole and guy wire
73	24' northeast	
73B	29' northeast	
73A	34' northeast	
74	38' northeast	
74A	35' north	Add anchor pole and guy wire
75	76' northeast	
76A		New pole
76	120' east	Add guy wire
82	17' north	Stay in line with existing

Date of Aerial Photography: 2005
 Filename: Layout - Segment 2A Power Pole Reloc

Drawn by: B. Miller
 Date: 2-24-2009
 Checked by: J. Unruh
 Date: 2-24-2009
 Revision Date:



Segment 2A Option 3 - 20th Avenue South from SD20 to US81 Power Pole Relocations

Watertown South Connector

Project EM 4020(01) PCN 00RW

Unruh, James

From: Dave.Hausmann@state.sd.us
Sent: Monday, April 13, 2009 2:03 PM
To: dwall@eastriver.coop; kbooze@eastriver.coop; Shawn.Anderson@knology.com; Gregory.Anderson@knology.com; tchambers@watertownmu.com; mmeier@watertownmu.com; rschmidt@watertownmu.com; jdeville@watertownmu.com; slehner@watertownmu.com; paul_foust@mmi.net; ryan_barr@mmi.net; bobj@codingtonclarkelectric.coop; davez@codingtonclarkelectric.coop; Bill.Pierce@qwest.com; denstad@watertownmu.com; dpetersen@watertownsd.us
Cc: Dean.VanDeWiele@state.sd.us; Tom.Lehmkuhl@state.sd.us; John.Fuglsang@state.sd.us; Neil.Schochenmaier@state.sd.us; Ron.Sherman@state.sd.us; Matt.Brey@state.sd.us; Jeff.Senst@state.sd.us; Darrell.Dehne@state.sd.us; Frank.Eich@state.sd.us
Subject: Watertown South Connector - Segment 2 - P 4020(01) Codington Co. PCN 00RW

The following is a summary of the utility meeting that was held on April 7, 2009 at the Watertown City Hall. Those representing the DOT were: Tom Lehmkuhl, Matt Brey, Neil Schochenmaier, John Fuglsang and myself. Those representing the utility companies are listed below.

The meeting started with John giving an overview of the project, which is currently proposed for a August 2010 letting. Other than updating the utility companies of the project and review of utility conflicts, the two main topics of the meeting were the alignment options (25+00 to 45+00) and utility corridors.

Alignment Options: The proposed alignment options in the area where the project parallels the railroad were reviewed. It was determined that both EREP and the City would prefer to relocate the joint transmission line based on both the age of the existing poles and the existing location being within the new in-slope. It was decided that the original alignment, as proposed in the EA, would be used. Both the City and EREP would relocate the joint line approximately 50' + south of the railroad tracks.

Utility Corridors: In my preliminary (pre-scope) investigation it was noted that it would be beneficial to provide utility corridors along the east side of Broadway Ave. and the south side of 20th Ave. It was decided to provide 30' wide corridors in the proposed areas. The corridors would be within the City's 50' set-back requirements and therefore would not impact any development, buildings, secondary structures, etc. Those requesting to occupy the corridor are: EREP, Qwest and MidContinent Communications.

Qwest Communications: Bill Pierce – 229-7441. Qwest will have both copper and fiber cables requiring relocation. The cables along the south side of Hwy 212 will be reviewed during the utility conflict analysis and will be pot-holed if needed. The copper cable along the west side of Broadway Ave. should not be impacted. The fiber cable along the east side of Broadway Ave. will be relocated within the new corridor. This cable will be placed within the new ROW as it transitions from Broadway Ave. to 20th Ave. All of Qwest's cables will be relocated into the utility corridor along 20th Ave. The pedestals in the SW quadrant of 20th Ave. and Hwy 81 will require relocation.

East River Electric Power: Ken Booze 256-8035 & Kurt Donelan 256-8018. The Company will be required to relocate the pole at 5+25 Rt (Hwy 212). Two approaches, centered at the transmission pole at 7+00 Rt (Hwy 20) will be included in the project in lieu of one approach as shown on the plans at the time of this meeting. As stated above, the segment of joint transmission line will be relocated in the area where the power line parallels the railroad. EREP will relocate the 69 Kv transmission line, along the east side of Broadway Ave. and along the south side of 20th Ave., into the new utility corridors. Ken stated that they would probably place the poles 2' outside of the new ROW line. EREP would like to have an electronic copy of the design files, in .dwg format.

Knology: Greg Anderson 766-7661. Knology's fiber cable along the west side of Hwy 20 should not be impacted by this project. The company's fiber cables along the south side of Hwy 212 will be reviewed during the utility conflict analysis and will be pot-holed if needed. Knology's aerial coax along the north side of 20th Ave. should not be impacted.

Watertown Municipal Utilities: Todd Chambers 882-6233, Doug Engstad 882-6233 and Mark Meier 882-6233. The City's OH transmission and distribution facilities will be impacted by the project. The final pole relocation will be established after the design is finalized and presented at the third utility meeting. As stated above, the

segment of joint transmission line will be relocated in the area where the OH 115 Kv transmission line parallels the railroad. The gas lines along the north and south sides of Hwy 212 will be reviewed during the utility conflict analysis and will be pot-holed if needed. The gas line crossing at 46+80 will require possible relocation and protection during construction. Mark stated that he would have this line located vertically (approximate depth w/ electronic equipment) and provide the DOT with that information. John will generate a cross section, along the gas line, after the vertical information is obtained. The gas line along the west side of Broadway Ave should not be impacted by the project. It was noted that the 10" HP steel gas line, running longitudinally along 20th Ave, will probably remain in place. This decision was made do to the high cost of relocation. The reg station, in the SW quadrant of 20th Ave. and Hwy 81, will be relocated to the south.

MidContinent Communications: Paul Foust 878-0844 and Ryan Barr 216-8003. The 3 PVC conduits, along the north side of Hwy 212, will be reviewed during the utility conflict analysis and will be pot-holed if needed. The company's aerial facilities, along the north side of 20th Ave. should not be impacted by the project. Midco would like to place a conduit, within the utility corridor along 20th Ave., for future use. The company's, above ground facilities in the SW quadrant of 20th Ave. and Hwy 81, will be relocated to the south.

Codington-Clark Electric: Bob Johnson (605) 886-5848. Bob contacted me and beings the Company's facilities are not being impacted, south and west of the Broadway Ave and 20th Ave intersection, he would not be attending the meeting.

If there are any corrections or additions, please advise.

David R. Hausmann
Utility Coordinator