

Public Meeting

SD Highway 38

From E of the SD38P Jct to 8.3 E of the Alexandria Jct
in Hanson County

P-PH 0038(48)304 PCN 05FA

Neil Schochenmaier, PE
Design Project Manager

November 16, 2021



Purpose of the Meeting

**Involve the public
in the planning
and design process**

**Provide a Project
Overview**

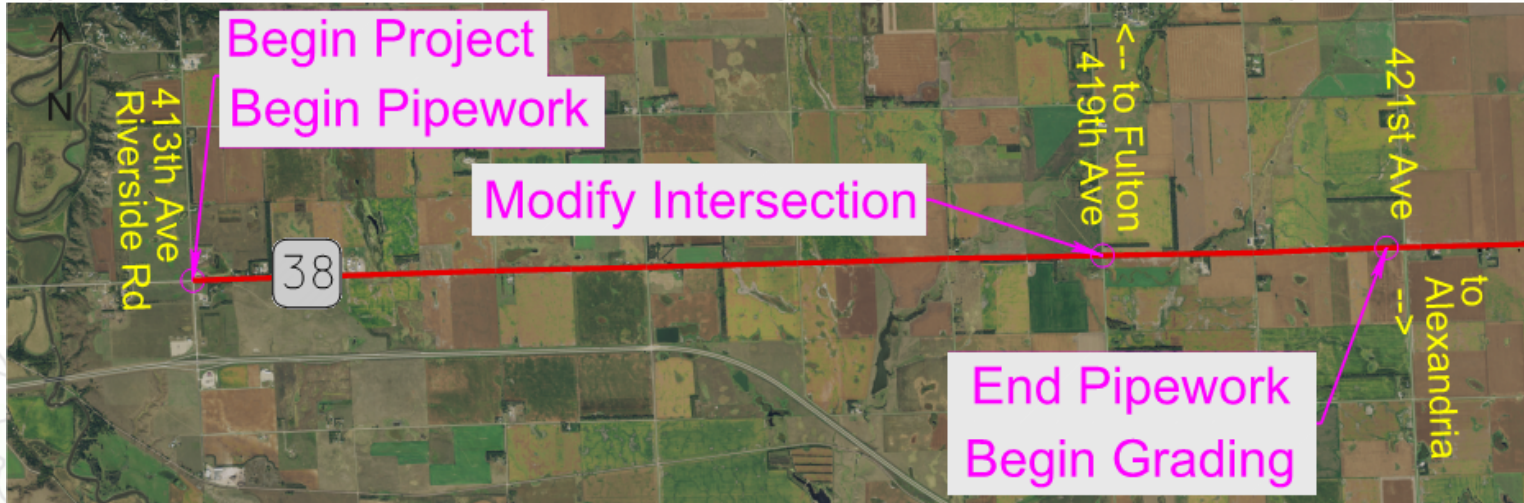
**Gather Input and
Comments**

- **Background Information**
- **Proposed Project**
- **Project Schedule**

Project Limits

North

James River



Project Limits

North



Spencer Quarry



Background Information

Grading & Structures in 1933, 1937 & 1943

Resurfaced in 2008 & 2010

Traffic – Begin (Riverside Rd) to 421st Ave (Alex Oil)

2020 Average Daily Traffic (ADT) = 1874

2045 Projected ADT = 2155

6.6% Average Truck Traffic

Traffic – 421st Ave (Alex Oil) to End (East County Line)

2020 Average Daily Traffic (ADT) = 886

2045 Projected ADT = 1019

9.7% Average Truck Traffic

Crash History

13 Reported Crashes

- 1 Fixed Object Off Road
- 1 Other
- 1 Rear-end
- 1 Overturn Off Road
- 9 Animal Hits

0 Fatality

**5-Year Period
from 2016
through 2020**

- Reported Crash Rate
1/1/2016 - 12/31/2020
= 1.57
- Statewide Weighted
Crash Rate = 1.46

**Rural Principal
Arterial**

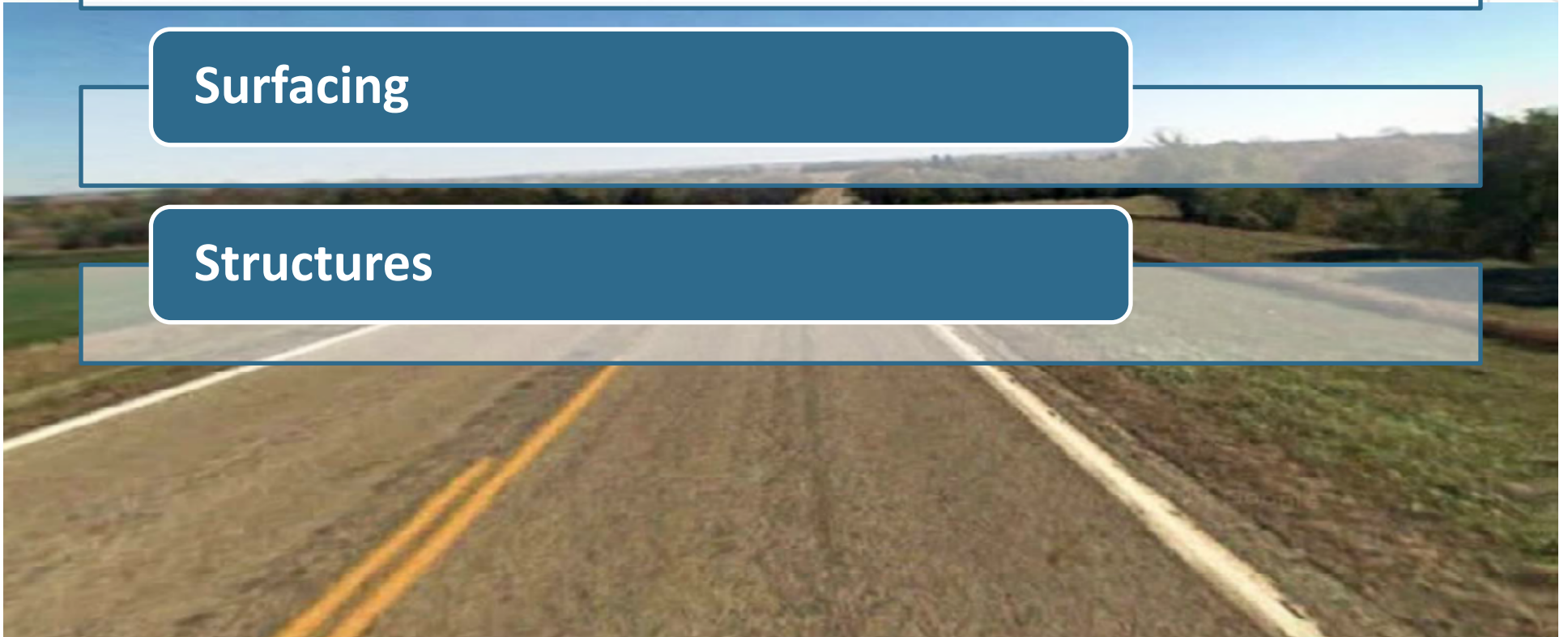
Why We're Reconstructing

Vertical Curves

Narrow Shoulders

Surfacing

Structures



Proposed Improvements

Reconstructing Road with 6-foot Shoulders

Replace Structure over Pierre Creek

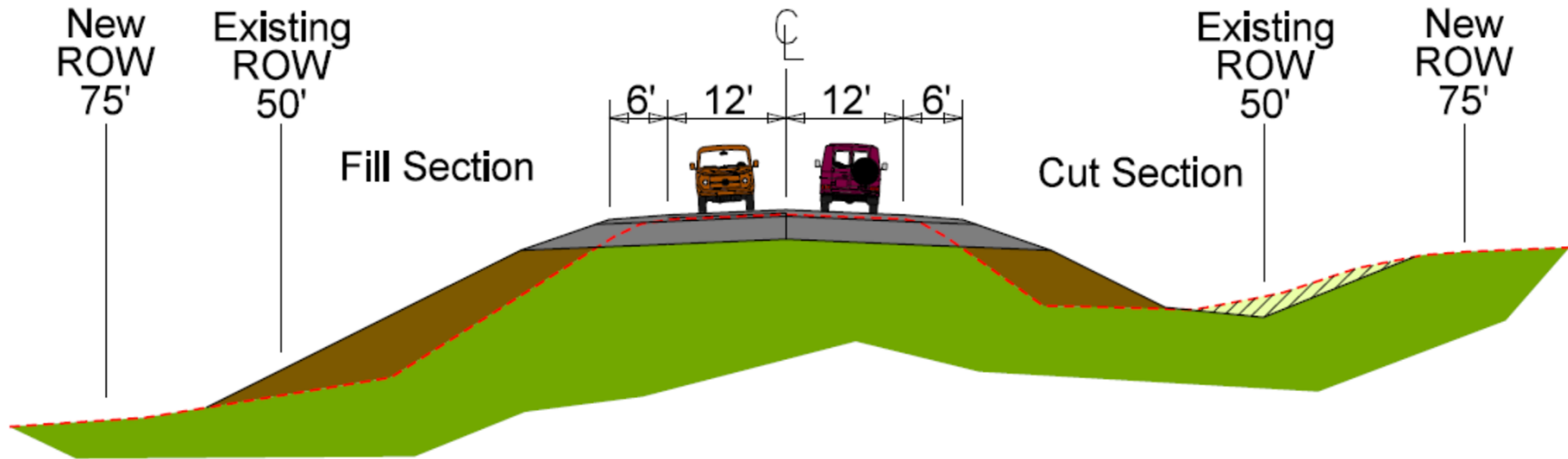
Replace Fence and Culverts

Interim Surfacing (final in 2026)



Proposed Typical Section

SD HIGHWAY 38 TYPICAL GRADING SECTION



Access Management

Provide safe, efficient access to streets and highways

By limiting the number of direct accesses to major roadways

See Handout

Right of Way (ROW)

Existing Width = 100 feet

Purchase additional ROW for 150 feet

Temporary Easements as needed

See Handout

Encroachments

**Private
Property in
Public ROW**

**Federal Highway Regulations for
Safety**

Examples

- **Signs**
- **Private Use (Parking)**
- **Landscaping Items**

Notification

**Owners of Encroachments will be
notified by the Mitchell Area
Office**

See Handout

Utility Coordination

Some Utilities
may need to be
relocated

Utility Companies
negotiate
easements with
landowners

Central Electric
East River Electric
Hanson Rural Water Systems, Inc.
Midcontinent Communications
Mitchell Telecom
Xcel Energy
Lumen / CenturyLink
Northern Natural Gas
NuStar Energy
SDN Communications
Triotel Communications

See Handout



Utility Coordination

**Any Known
Private Utilities?**

Contact SD DOT

- Water Lines
- Drain Fields
- Septic Tanks
- Underground Storage Tanks
- Underground Power Lines

See Handout



Environmental, Social and Economic Concerns

- This project is being developed in accordance with applicable State and Federal environmental regulations.
- In accordance with the National Environmental Policy Act of 1969 (NEPA), as amended. Coordination has been initiated with State & Federal resource agencies.

See Handout



Environmental, Social and Economic Concerns

Section 106

Section 106 of the National Historic Preservation Act requires Federal actions to take into account the effects of project undertakings on historic properties.

Contaminated Materials

Project undertaking will take into account contaminated soils with relation to existing aboveground and underground storage tanks within or adjacent to project's area of potential effect.

Wetlands

Federal regulations require that unavoidable wetland impacts caused by highway construction be mitigated. If you are interested in creating or restoring wetlands on your property, please complete the Wetland Mitigation Registry Form in the handouts.

See Handout



Environmental, Social and Economic Concerns

Threatened & Endangered Species

According to the U.S. Fish & Wildlife Service, the following species are known to occur in Hanson County:

- Birds - Whooping Crane & Red Knot
- Mammals - Northern Long-eared Bat
- Fish - Topeka Shiner
- Plants - Western Prairie Fringed Orchid



See Handout

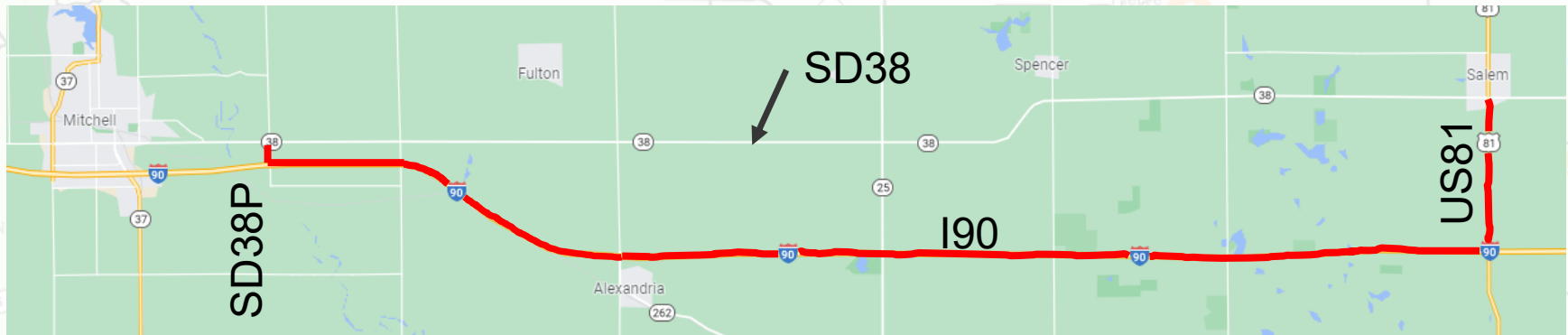
Construction Traffic Control

Road will be closed to through traffic during construction

Local traffic and emergency vehicle access will be maintained at all times

Construction Traffic Control

Detour routes for
SD Hwy 38
traffic during
construction



Landowner Meetings

Early 2022

Landowners adjacent to the project will be contacted individually by SDDOT to schedule a meeting

Discussion Items

Driveway locations/widths

Fences

Drainage

Trees

Temporary Easements or ROW acquisition

See Handout



Tentative Project Schedule

Dependent on State/Roadway Safety Improvement Funding

Early 2022
Landowner
Meetings

2022
Final Design

2023-2024
ROW
Acquisition

2025
Construction

\$7.6 million

Final Surfacing is planned for 2019



Questions or Comments

by: **November 30, 2021**

submit to:

Neil Schochenmaier
Office of Road Design

South Dakota Department of Transportation

700 East Broadway Avenue

Pierre, South Dakota 57501

Neil.Schochenmaier@state.sd.us

website:

<https://dot.sd.gov/projects-studies/projects/public-meetings>

