

Public Meeting

IM 0909(92)387 PCN 06G8

I-90 Exit 387

And

463rd St – from Jeffrey St to Diamond Trail
Hartford, SD

Ben White, PE, LS

HR Green Project Manager

Stacy DuChene, PE

SDDOT Project Manager

September 14, 2021



Purpose of the Meeting

**Involve the
Public in the
Design Process**

**Provide a
Project
Overview**

**Gather Input
and Comments**

- **Background Information**
- **Proposed Project**
- **Project Schedule**

Project Limits



Background Information

Bridge is nearing the end of its service life

Bridge has been struck by overheight loads on I-90

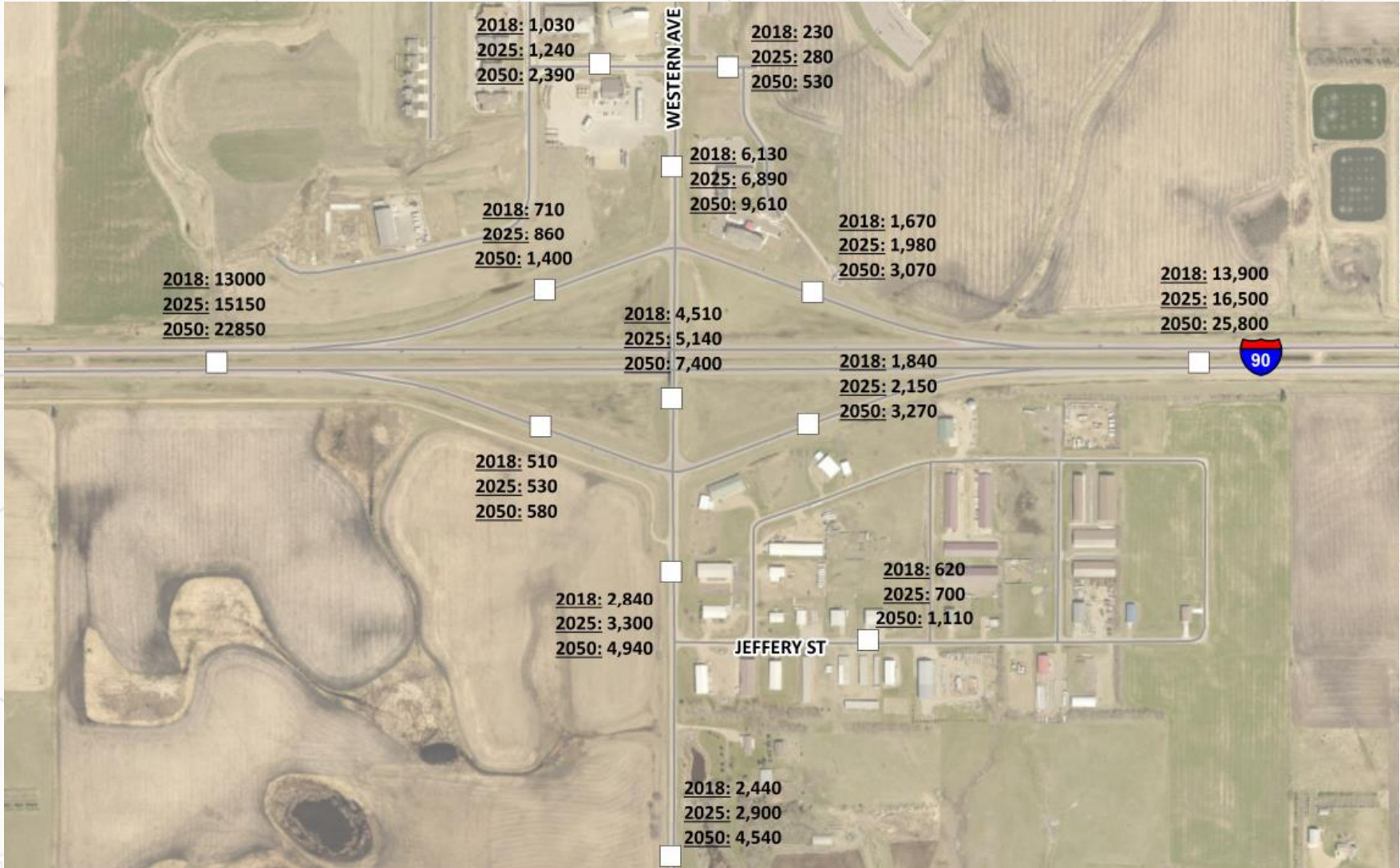
New bridge will accommodate pedestrians

Interchange and Environmental Study completed (2018 – 2020)

Standard Diamond Interchange Selected



Traffic



Approximately 8.6% Average Truck Traffic



Crash History

Western Avenue and I-90 Ramp Terminals

261st Street to Mickelson Road

- 22 Total Crashes (6 with injuries or possible injuries)
- 10 Angle
- 6 Rear-End
- 4 Single-Vehicle
- 2 Sideswipe

I-90 Eastbound Ramp Terminal Intersection

- 4 Crashes (1 with injuries)
- 2 Angle
- 1 Rear-End
- 1 Single-Vehicle

I-90 Westbound Ramp Terminal Intersection

- 4 Crashes (1 with possible injuries)
- 3 Rear-End
- 1 Sideswipe

Proposed Improvements

New Entrance/Exit Ramps

Bridge Replacement with Pedestrian Accommodations

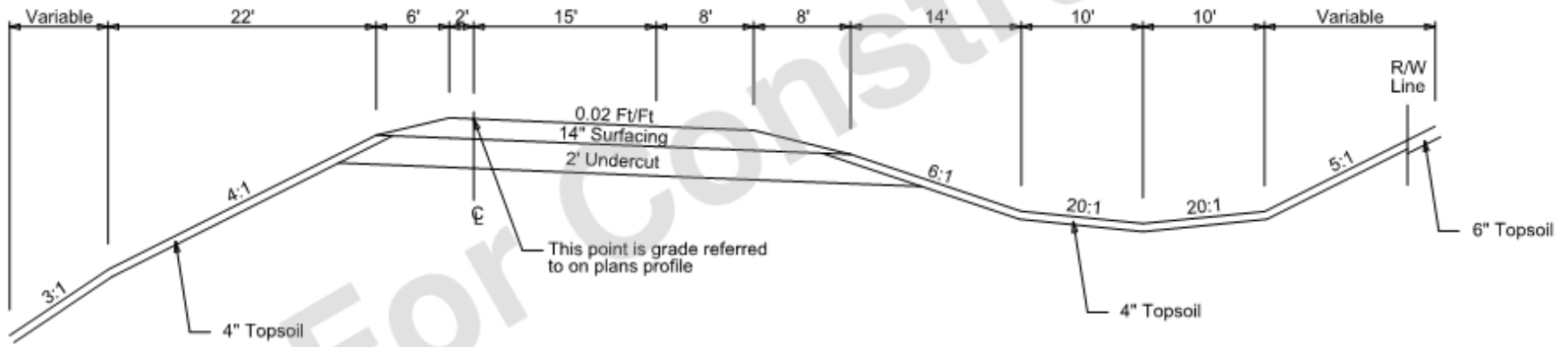
Reconstruct Western Avenue from south of Jeffrey to Diamond Trail

City of Hartford anticipates reconstructing Western from Diamond Trail to Mickelson Rd

Interchange Lighting

Proposed Typical Section

Interchange Ramps



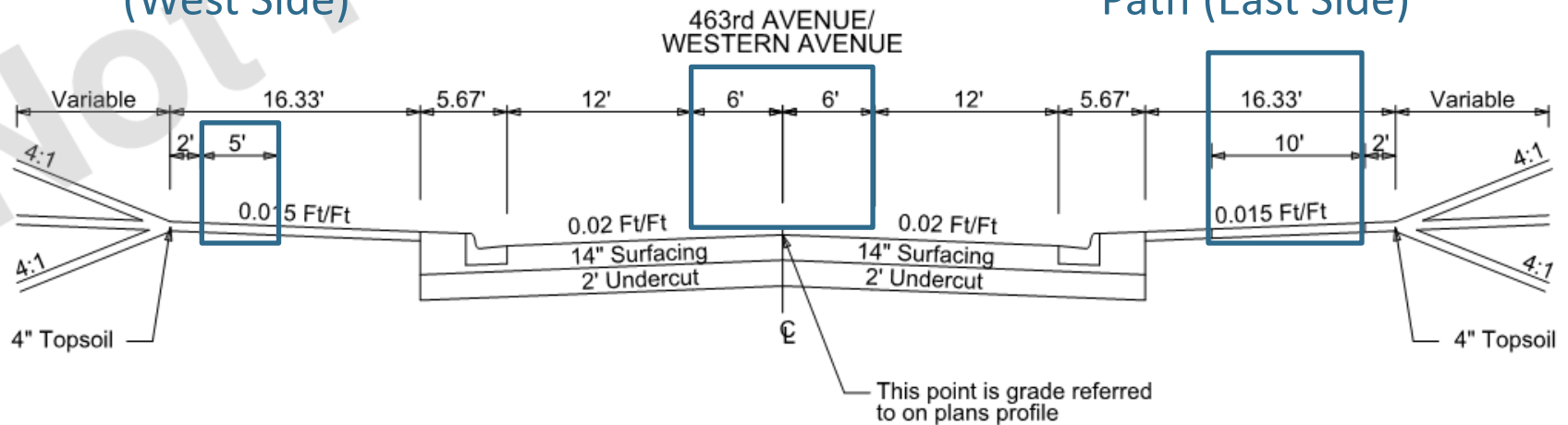
Proposed Typical Section

Western Avenue / 463rd Avenue

5' Sidewalk
(West Side)

Center Turn Lane

10' Shared Use
Path (East Side)

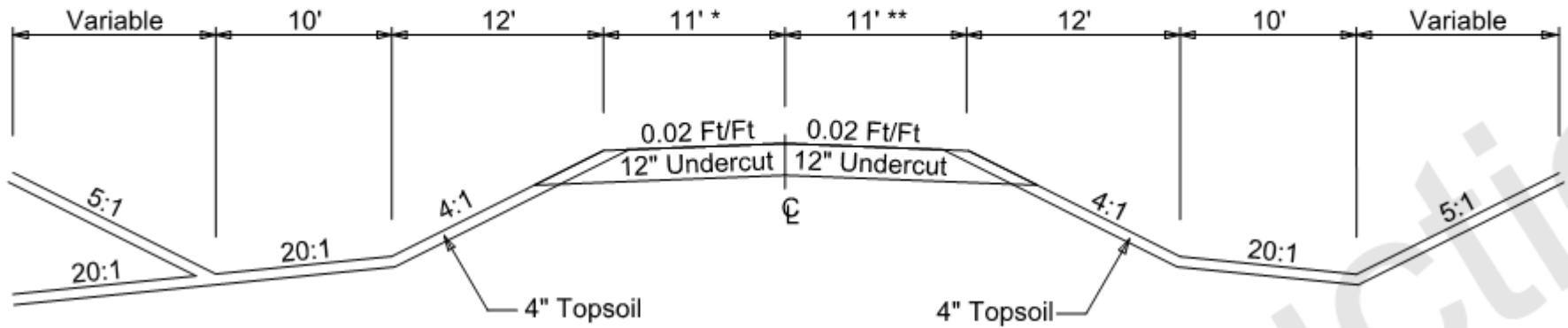


Proposed Typical Section

Frontage Road – SW Quadrant of Interchange

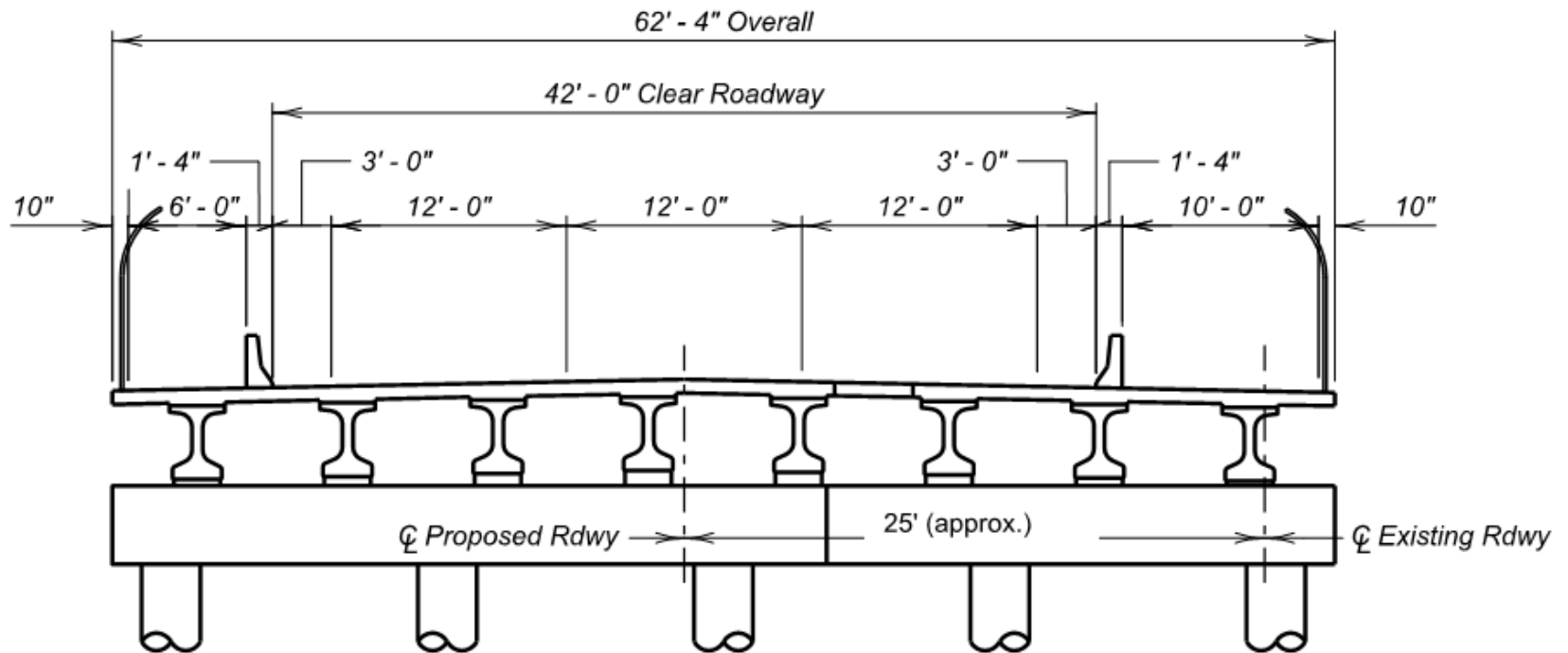
FRONTAGE ROAD

6+25 to 6+50
13+00 to 28+00



Proposed Typical Section

Bridge



Access Management

Manage location and number of access points

Provide safe,
efficient access to
streets and
highways

Relocating,
combining and
eliminating access
points

See Handout

Right of Way (ROW)

Existing Width varies

Purchase additional ROW as needed

Temporary Easements as needed for construction

See Handout

Encroachments

**Private
Property in
Public ROW**

**Federal Highway Regulations for
Safety**

Examples

- Signs
- Private Use (Parking)
- Landscaping Items

Notification

**Owners of Encroachments will be
notified by the Mitchell Area
Office**

See Handout

Utility Coordination

Some Utilities
may need to be
relocated

Utility Companies
negotiate
easements with
landowners (if
necessary)

East River Electric Power Coop
MidAmerican Energy
Sioux Valley Energy
Minnehaha Community Water
SDN Communications
Golden West Communications
City of Hartford

See Handout

Environmental, Social and Economic Concerns

This project is being developed in accordance with applicable State and Federal environmental regulations.

- **National Environmental Policy Act of 1969 (NEPA), as amended.**
- **Section 106 of the National Historic Preservation Act (No historic or archaeological sites will be impacted by the project)**

See Handout



Environmental, Social and Economic Concerns

- **Section 404 of the Clean Water Act** (Wetlands impacted by the project will be mitigated)
- **Section 4(f) of the USDOT Transportation Act of 1966** (No permanent impacts to Section 4(f) Resources)

See Handout



Environmental, Social and Economic Concerns

- **Section 7 of the Endangered Species Act**

The U.S. Fish and Wildlife Service will review the project to determine if it will impact the following species that are known to occur in Minnehaha County:

- **Mammals: Northern Long-Eared Bat**

No impacts are anticipated to these species by the project.

See Handout



Construction Traffic Control

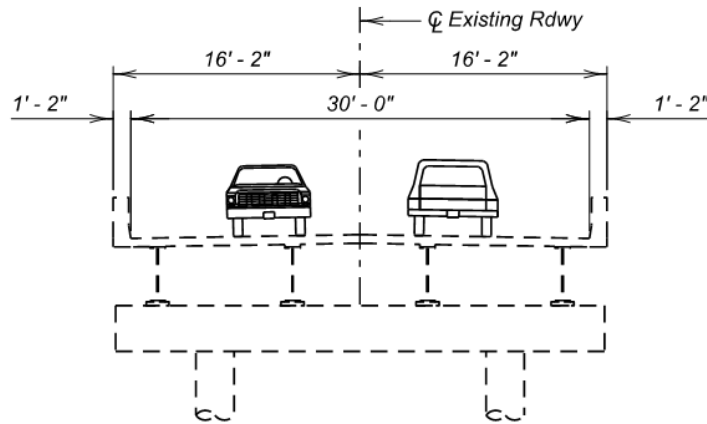
**1 Year Project
Anticipated to
Begin in 2025**

**Traffic to be
maintained
across I-90
throughout
construction**

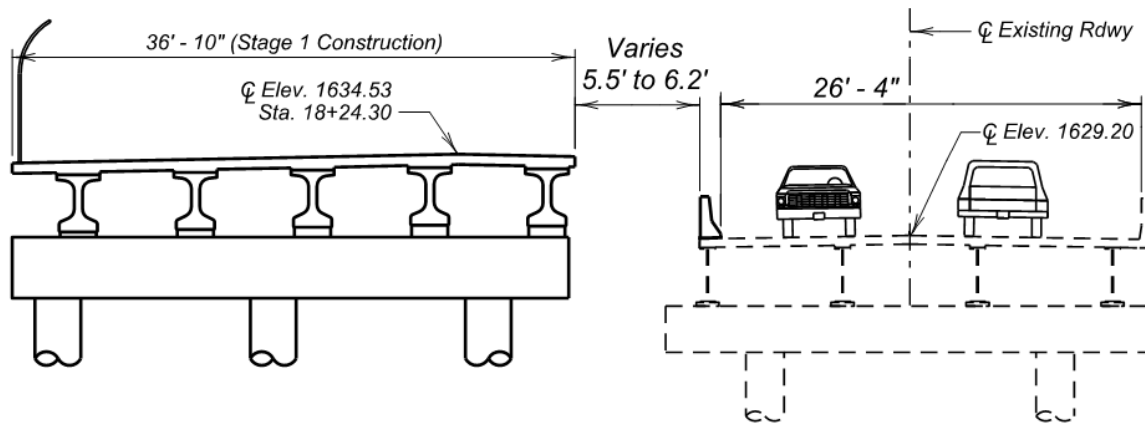
Ramps on West Side
Anticipated to be Closed
During Construction.

Temporary Ramps
Anticipated to be
installed for Ramps on
East Side. Partial
Closures will be
necessary.

Construction Phasing

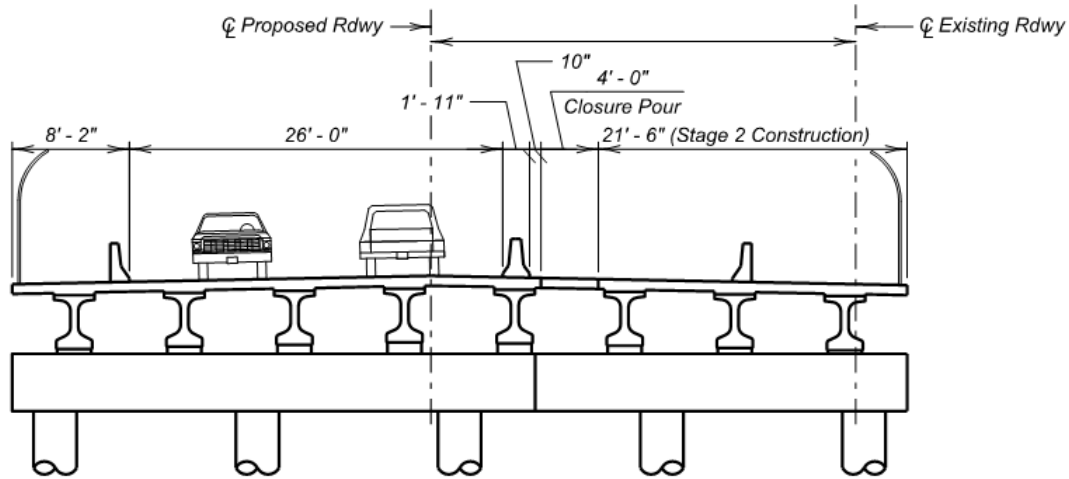


EXISTING BRIDGE SECTION

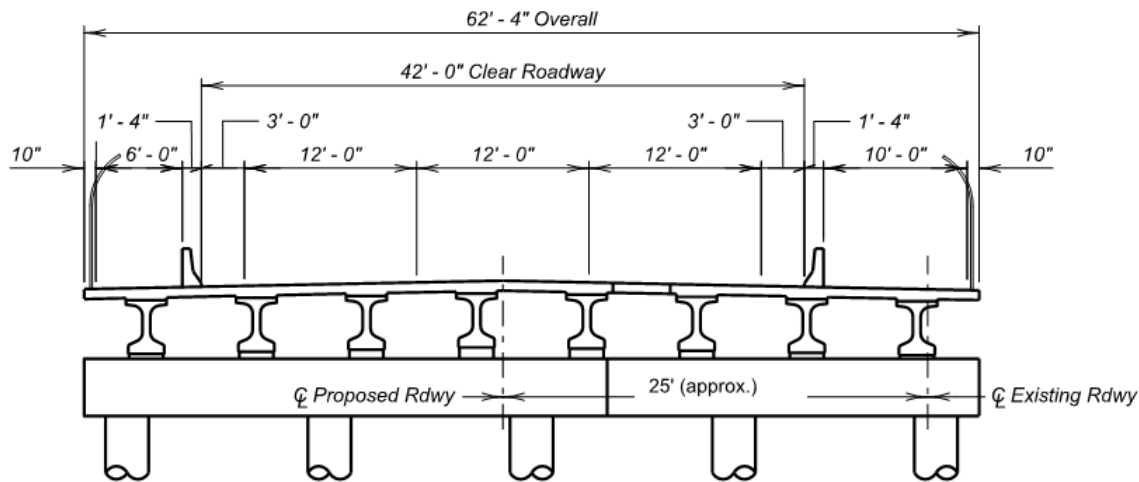


STAGE 1

Construction Phasing



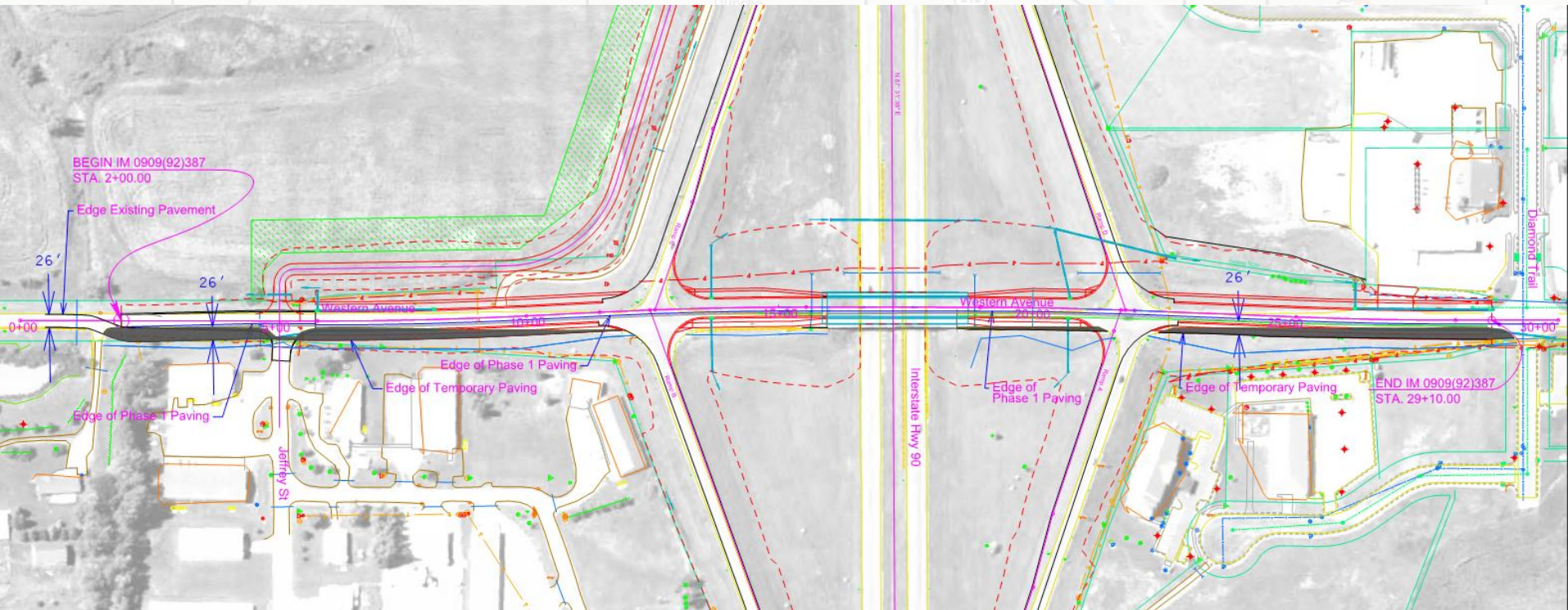
STAGE 2



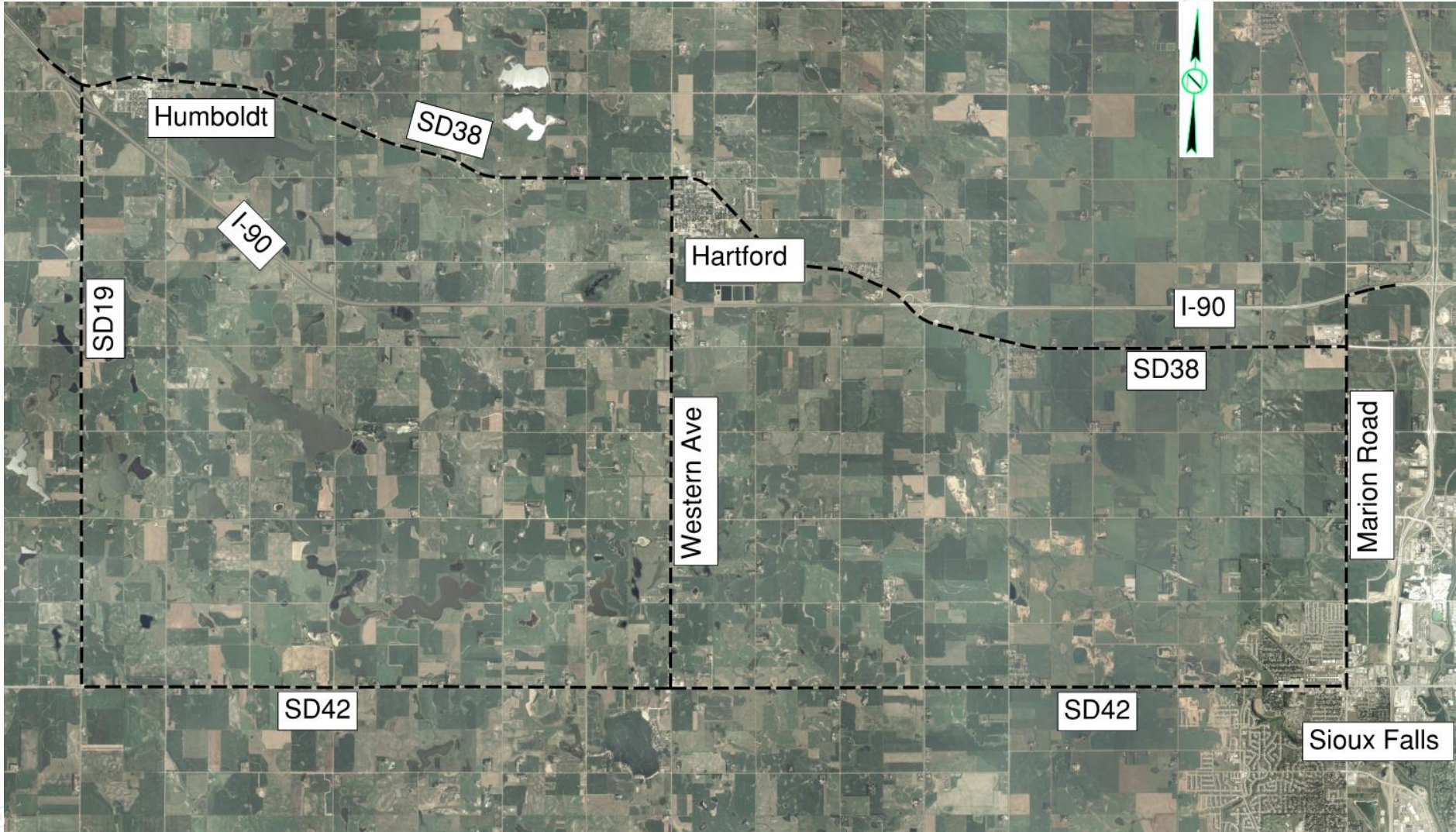
COMPLETED BRIDGE SECTION

Construction Phasing

Western Ave Staging



Proposed Detour Routes



Landowner Meetings

Landowners adjacent to the project will be contacted individually by SDDOT to schedule a meeting (December of 2021)

Discussion Items:

- Driveway locations/widths
- Sidewalk and Curb Ramps
- Fences
- Drainage
- Trees
- Temporary Easements or ROW acquisition

See Handout



Tentative Project Schedule

Dependent on Federal Funding

Winter 2021
Landowner
Meetings

2021 thru
2022
Final Design

2023 thru
2024
ROW
Acquisition

2025
Construction

Estimated Cost: \$22.7 million

Public Input

Submit Questions and/or Comments:

by:

**September 28,
2021**



to:

Ben White, PE, LS
HR Green
431 N Phillips Ave #400
Sioux Falls, SD 57104
bwhite@hrgreen.com
605-334-4499

Stacy DuChene, PE
SDDOT
5316 W 60th St N
Sioux Falls, SD 57107
Stacy.DuChene@state.sd.us
605-367-5680



Building Communities.
Improving Lives.

Public Meeting Information can be found at:
<https://dot.sd.gov/projects-studies/projects/public-meetings>

