



Automatic Traffic Recorder Data



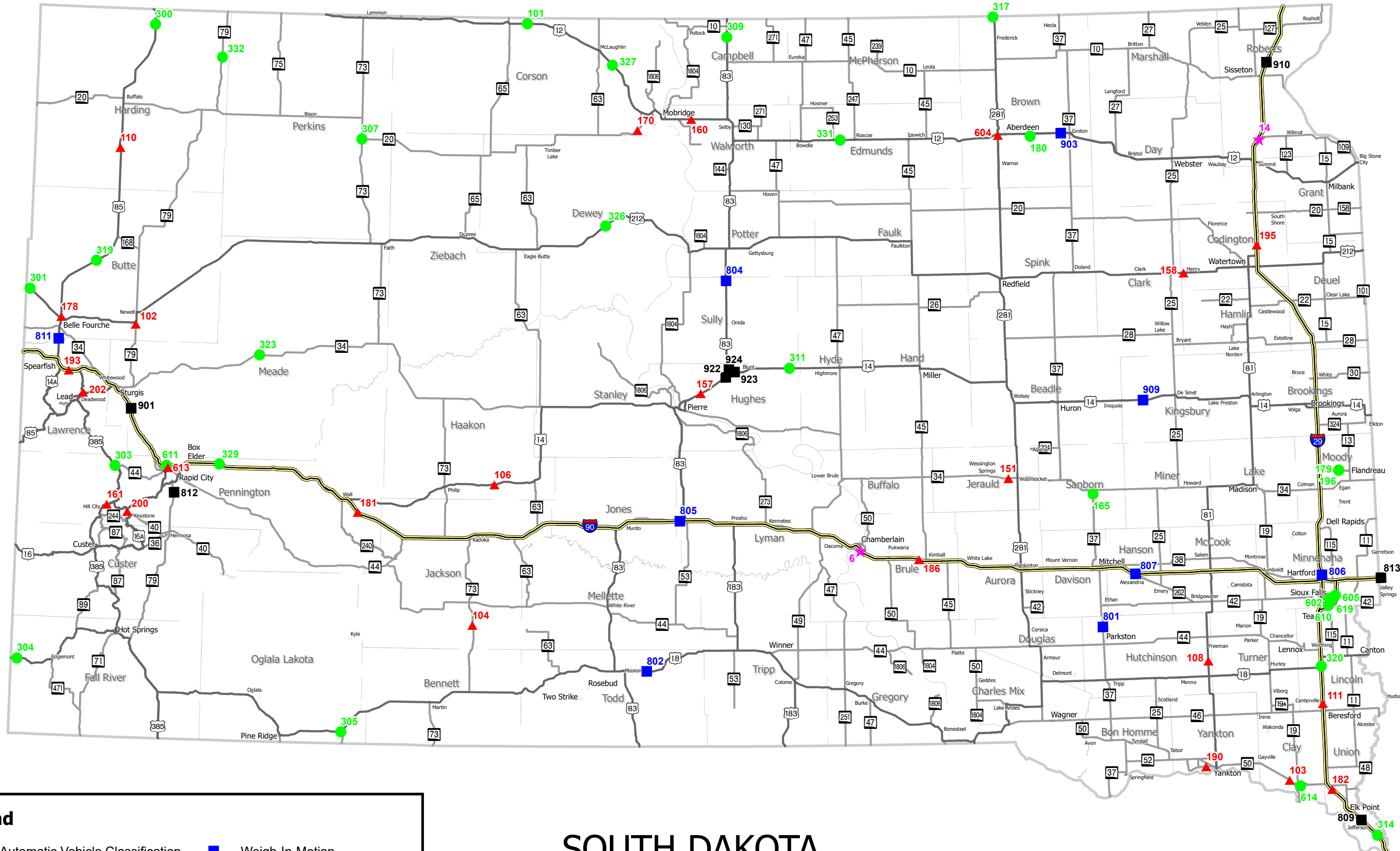
Prepared by:
Division of Planning and Engineering
Inventory Management & Research
700 East Broadway Avenue
Pierre, South Dakota 57501
(605) 773-3278

Photo by South Dakota Tourism

The South Dakota Department of Transportation provides services without regard to race, color, gender, religion, national origin, age or disability, according to the provisions contained in SDCL 20-13, Title VI of the Civil Rights Act of 1964, the Rehabilitation Act of 1973, as amended, the Americans With Disabilities Act of 1990 and Executive Order 12898, Federal Actions to Address Environmental Justice in Minority Populations and Low-Income Populations, 1994.

To request additional information on the DOT's Title VI/Nondiscrimination policy or to file a discrimination complaint, please contact the Department's Civil Rights Office at 605-773-3540

May 2026



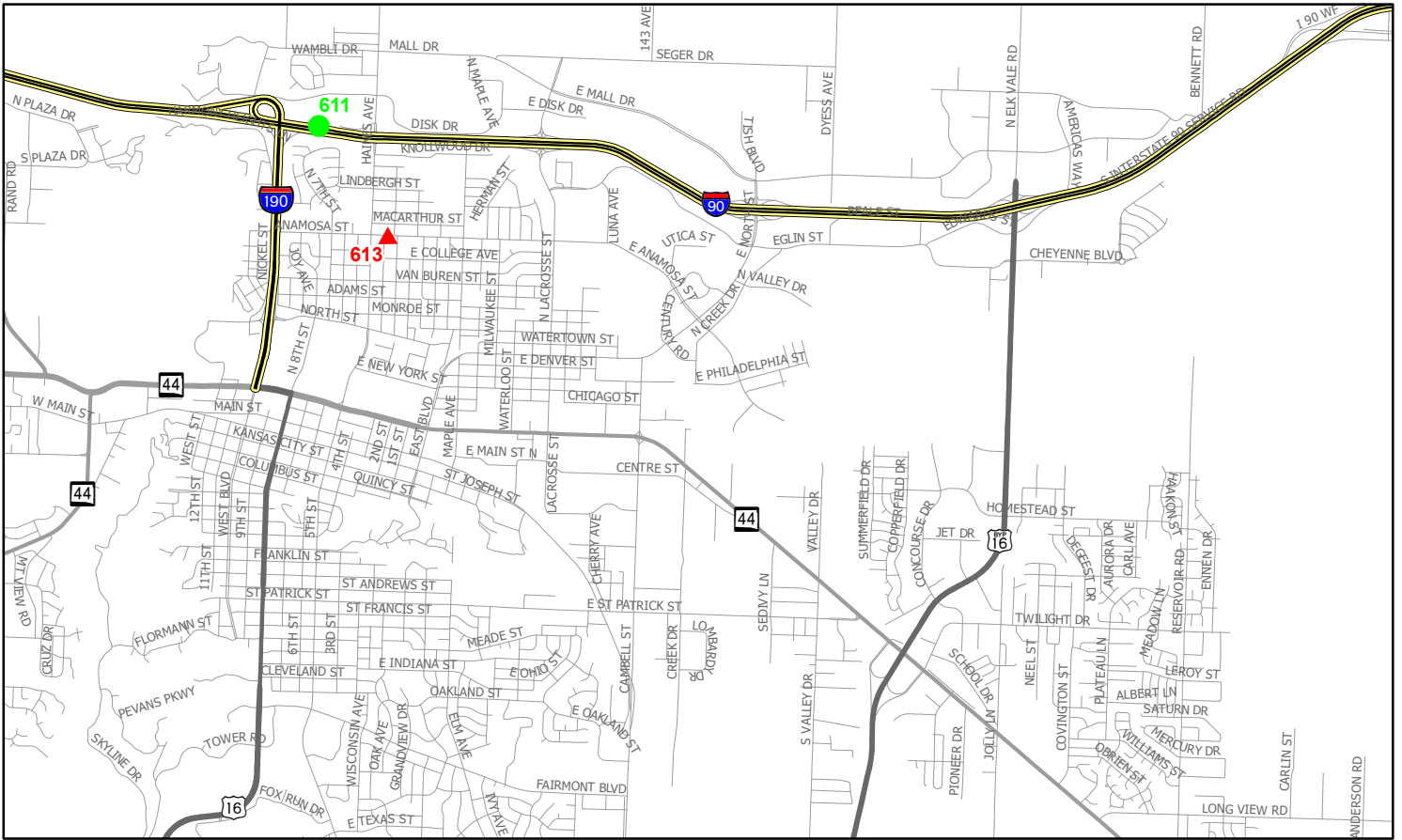
Legend

- ▲ Automatic Vehicle Classification
- Volume (incl. RWIS)
- ★ Rest Area Volume
- Weigh-In-Motion
- Weigh-In-Motion Port of Entry

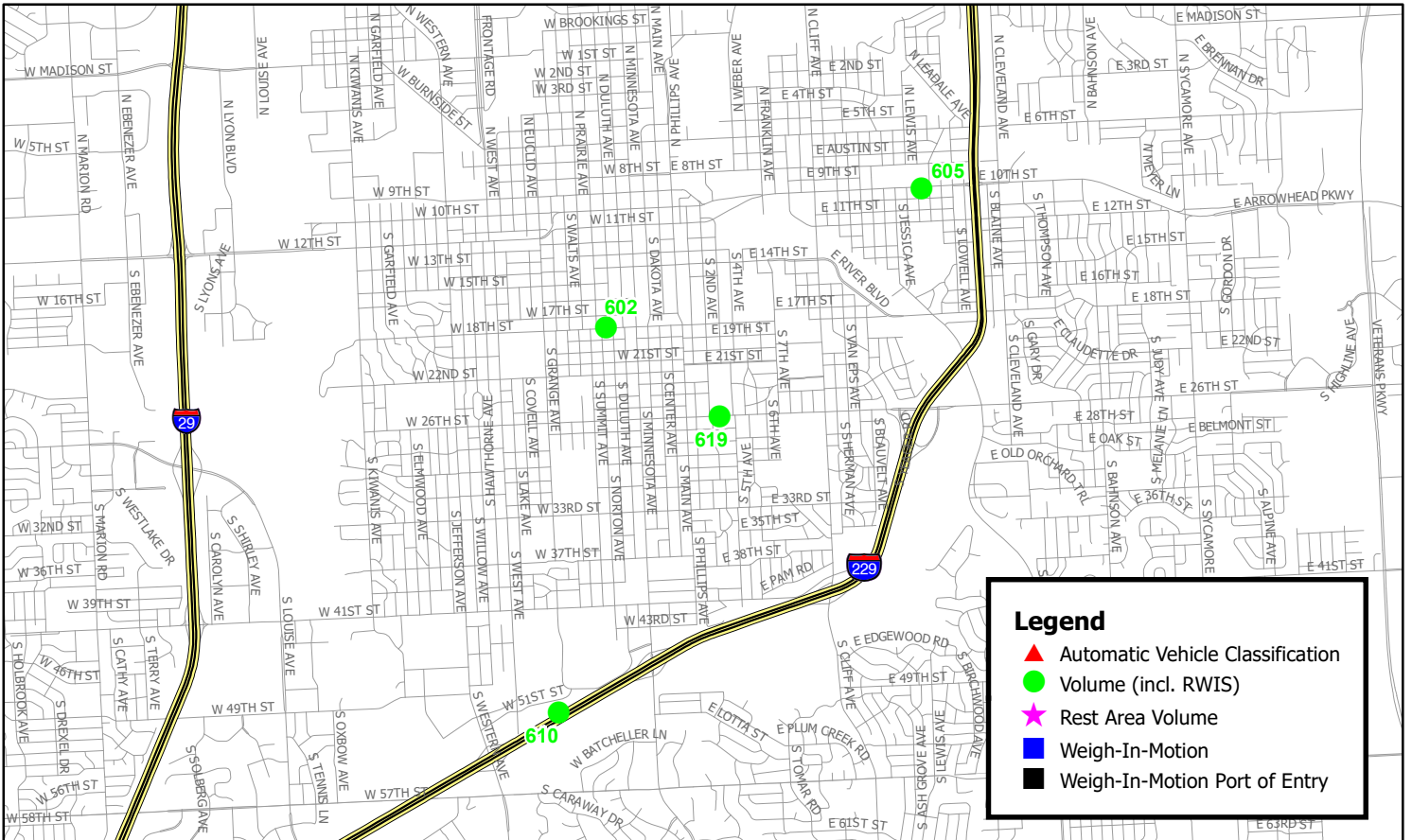
SOUTH DAKOTA

Permanent Sites

Rapid City



Sioux Falls



**Automatic Traffic Recorder Data
Volume Comparison For Each Month of 2025 And 2026**

ATR Sites: 100, 200, 600 series. Rest Areas: 002-014 series. Weigh In Motion Sites: 800, 900 series. ESS Sites: 300 series.

Station Direction Year	Jan	Feb	Mar	Apr	May	Blue Nbrs - 3 Year Avg Used			* - Construction/Counter Malfunction/Data Not Available				
						Jun	Jul	Aug	Sep	Oct	Nov	Dec	Annual
Rural Major Collector													
180 NORTH													
FAS 6251 SOUTH OF BATH						BROWN							
# of Days Monitored	31	27	28	30	30								
2026	230	249	263	293	340								
# of Days Monitored	30	28	30	29	31	27	31	31	19	31	25	30	
2025	246	254	282	289	310	329	291	288	296	371	301	222	290
% CHG. MO.	-6.50%	-1.97%	-6.74%	1.38%	9.68%								
% CHG. YR.		-4.20%	-4.48%	-2.63%	5.68%								
180 SOUTH													
FAS 6251 SOUTH OF BATH						BROWN							
# of Days Monitored	31	27	28	30	30								
2026	209	231	235	264	314								
# of Days Monitored	30	28	30	29	31	27	31	31	19	31	25	30	
2025	227	233	255	265	292	306	266	265	273	349	279	205	268
% CHG. MO.	-7.93%	-0.86%	-7.84%	-0.38%	7.53%								
% CHG. YR.		-4.35%	-4.51%	-4.04%	3.77%								
190 EAST													
SD 52 WEST OF YANKTON						YANKTON							
# of Days Monitored	31	28	30	30	31								
2026	2,316	2,564	2,767	3,094	4,046								
# of Days Monitored	31	28	28	30	29	30	30	31	30	31	28	31	
2025	2,347	2,424	2,782	3,167	3,969	4,572	4,638	4,161	3,571	3,302	2,629	2,341	3,325
% CHG. MO.	-1.32%	5.78%	-0.54%	-2.31%	1.94%								
% CHG. YR.		2.28%	2.40%	-1.48%	0.06%								

NOTE: The statistics provided throughout this report are a general overview of the monthly traffic trends from approximately 75 permanent traffic monitoring locations throughout the state. For South Dakota's official travel trend, please refer to the annual vehicle miles travel report, which includes data from the permanent traffic monitoring locations in addition to approximately 7,000 short-term count locations.

Station Direction Year	Jan	Feb	Mar	Apr	May	Jun	Jul	Aug	Sep	Oct	Nov	Dec	Annual
190 WEST													
SD 52 WEST OF YANKTON						YANKTON							
# of Days Monitored	31	28	30	30	31								
2026	2,365	2,622	2,839	3,169	4,118								3,023
# of Days Monitored	31	28	28	30	29	30	30	31	30	31	28	31	
2025	2,396	2,464	2,842	3,238	4,044	4,671	4,658	4,249	3,594	3,345	2,671	2,382	3,380
% CHG. MO.	-1.29%	6.41%	-0.11%	-2.13%	1.83%								
% CHG. YR.		2.61%	2.92%	-1.18%	0.07%								
196 NORTH													
FAS 6337 WEST OF FLANDREAU						MOODY							
# of Days Monitored	17	20		23	31								
2026	103	105	*	130	145								121
# of Days Monitored	27	20		26	31	30	31	31	30	31	27	26	
2025	108	105	*	125	145	141	141	137	152	144	125	113	131
% CHG. MO.	-4.63%	0%		4%	0%								
% CHG. YR.		-2.35%		4%	1.85%								
196 SOUTH													
FAS 6337 WEST OF FLANDREAU						MOODY							
# of Days Monitored	17	20		23	31								
2026	111	109	*	138	156								128
# of Days Monitored	27	20		26	31	30	31	31	30	31	27	26	
2025	116	109	*	133	156	152	151	146	158	155	129	118	138
% CHG. MO.	-4.31%	0%		3.76%	0%								
% CHG. YR.		-2.22%		3.76%	1.73%								
Rural Minor Arterial													
151 EAST													
SD 34 EAST OF WESSINGTON SPRINGS						JERAULD							
# of Days Monitored	31	28	27	30	31								
2026	498	564	583	604	680								586
# of Days Monitored	30	28	29	30	31	30	27	29	29	31	29	31	
2025	477	501	540	602	675	675	656	701	692	719	613	514	614
% CHG. MO.	4.40%	12.57%	7.96%	0.33%	0.74%								
% CHG. YR.		8.59%	10.18%	3.94%	0.55%								

NOTE: The statistics provided throughout this report are a general overview of the monthly traffic trends from approximately 75 permanent traffic monitoring locations throughout the state. For South Dakota's official travel trend, please refer to the annual vehicle miles travel report, which includes data from the permanent traffic monitoring locations in addition to approximately 7,000 short-term count locations.

Station Direction Year	Jan	Feb	Mar	Apr	May	Jun	Jul	Aug	Sep	Oct	Nov	Dec	Annual
151 WEST													
SD 34 EAST OF WESSINGTON SPRINGS						JERAULD							
# of Days Monitored	31	28	27	30	31								
2026	501	568	579	609	687								589
# of Days Monitored	30	28	29	30	31	30	27	29	29	31	29	31	
2025	481	510	553	607	678	686	677	711	707	725	620	513	622
% CHG. MO.	4.16%	11.37%	4.70%	0.33%	1.33%								
% CHG. YR.		7.87%	7.90%	2.41%	0.86%								
170 EAST													
SD 20 WEST OF MOBRIDGE						CORSON							
# of Days Monitored	31	28	30	30	31								
2026	261	305	307	327	383								317
# of Days Monitored	30	28	30	29	31	27	30	31	30	31	29	31	
2025	264	272	314	349	392	407	391	372	423	399	351	277	351
% CHG. MO.	-1.14%	12.13%	-2.23%	-6.30%	-2.30%								
% CHG. YR.		5.60%	4.44%	-4.37%	-4.18%								
170 WEST													
SD 20 WEST OF MOBRIDGE						CORSON							
# of Days Monitored	31	28	30	30	31								
2026	269	309	316	329	389								322
# of Days Monitored	30	28	30	29	31	27	30	31	30	31	29	31	
2025	268	271	316	350	385	406	395	380	425	399	354	284	353
% CHG. MO.	0.37%	14.02%	0%	-6%	1.04%								
% CHG. YR.		7.24%	6.47%	-3.15%	-2.31%								
179 EAST													
SD 32 WEST OF FLANDREAU						MOODY							
# of Days Monitored	27	28	24	30	31								
2026	885	947	1,063	1,059	1,114								1,014
# of Days Monitored	30	28	25	30	31	29	31	31	30	31	28	31	
2025	919	968	1,039	1,145	1,151	1,155	1,151	1,131	1,142	1,156	1,018	862	1,070
% CHG. MO.	-3.70%	-2.17%	2.31%	-7.51%	-3.21%								
% CHG. YR.		-2.91%	0.15%	-2.84%	-5.36%								

NOTE: The statistics provided throughout this report are a general overview of the monthly traffic trends from approximately 75 permanent traffic monitoring locations throughout the state. For South Dakota's official travel trend, please refer to the annual vehicle miles travel report, which includes data from the permanent traffic monitoring locations in addition to approximately 7,000 short-term count locations.

Station Direction Year	Jan	Feb	Mar	Apr	May	Jun	Jul	Aug	Sep	Oct	Nov	Dec	Annual
179 WEST													
SD 32 WEST OF FLANDREAU						MOODY							
# of Days Monitored	27	28	24	30	31								
2026	932	994	1,100	1,096	1,146								1,054
# of Days Monitored	30	28	25	30	31	29	31	31	30	31	28	31	
2025	959	1,008	1,085	1,185	1,188	1,202	1,189	1,165	1,180	1,191	1,041	896	1,107
% CHG. MO.	-2.82%	-1.39%	1.38%	-7.51%	-3.54%								
% CHG. YR.		-2.08%	0.05%	-3.26%	-5.52%								
200 EAST													
US 16A NORTH OF KEYSTONE						PENNINGTON							
# of Days Monitored	29	26	28	29	31								
2026	506	636	844	1,016	1,929								986
# of Days Monitored	29	28	29	30	30	28	30	26	30	31	27	23	
2025	425	476	756	987	1,910	3,328	3,717	3,969	2,317	1,383	674	519	1,705
% CHG. MO.	19.06%	33.61%	11.64%	2.94%	0.99%								
% CHG. YR.		26.75%	20.13%	6.71%	1.66%								
200 WEST													
US 16A NORTH OF KEYSTONE						PENNINGTON							
# of Days Monitored	29	26	27	28	31								
2026	543	679	879	1,081	2,181								1,073
# of Days Monitored	29	28	29	30	29	28	30	26	30	31	27	23	
2025	448	506	827	1,075	2,097	3,653	4,069	4,501	2,563	1,532	732	552	1,880
% CHG. MO.	21.21%	34.19%	6.29%	0.56%	4.01%								
% CHG. YR.		28.09%	16.88%	3.05%	2.84%								
206 EAST													
US 16A EAST OF CUSTER						CUSTER							
# of Days Monitored					30								
2026	*	*	*	*	1,489								1,489
# of Days Monitored													
2025	*	*	*	*	*	*	*	*	*	*	*	*	*
% CHG. MO.													
% CHG. YR.													

NOTE: The statistics provided throughout this report are a general overview of the monthly traffic trends from approximately 75 permanent traffic monitoring locations throughout the state. For South Dakota's official travel trend, please refer to the annual vehicle miles travel report, which includes data from the permanent traffic monitoring locations in addition to approximately 7,000 short-term count locations.

Station Direction Year	Jan	Feb	Mar	Apr	May	Jun	Jul	Aug	Sep	Oct	Nov	Dec	Annual
206 WEST													
US 16A EAST OF CUSTER						CUSTER							
# of Days Monitored					30								
2026	*	*	*	*	1,509								1,509
# of Days Monitored													
2025	*	*	*	*	*	*	*	*	*	*	*	*	
% CHG. MO.													
% CHG. YR.													
307 NORTH													
SD 73 COALSPRINGS						PERKINS							
# of Days Monitored	23	22	25	24	29								
2026	184	198	199	209	247								207
# of Days Monitored	23	19	21	28	27	29	30	31	28	28	26	29	
2025	163	183	194	219	258	303	257	286	301	295	272	206	245
% CHG. MO.	12.88%	8.20%	2.58%	-4.57%	-4.26%								
% CHG. YR.		10.40%	5.31%	-1.21%	-4.40%								
307 SOUTH													
SD 73 COALSPRINGS						PERKINS							
# of Days Monitored	23	22	25	24	29								
2026	191	214	211	214	252								216
# of Days Monitored	23	19	21	28	27	29	30	31	28	28	26	29	
2025	172	187	208	222	271	304	268	298	334	323	294	225	259
% CHG. MO.	11.05%	14.44%	1.44%	-3.60%	-7.01%								
% CHG. YR.		12.81%	7.59%	-1.16%	-5.48%								
332 NORTH													
SD 79 Ralph						HARDING							
# of Days Monitored		10		21	26								
2026	*	114	*	139	172								142
# of Days Monitored	25	22		20	31	29	30	30	28	28	22		
2025	83	112	*	136	178	210	191	191	173	158	120	*	155
% CHG. MO.		1.79%		2.21%	-3.37%								
% CHG. YR.				2.21%	-0.96%								

NOTE: The statistics provided throughout this report are a general overview of the monthly traffic trends from approximately 75 permanent traffic monitoring locations throughout the state. For South Dakota's official travel trend, please refer to the annual vehicle miles travel report, which includes data from the permanent traffic monitoring locations in addition to approximately 7,000 short-term count locations.

Station Direction Year	Jan	Feb	Mar	Apr	May	Jun	Jul	Aug	Sep	Oct	Nov	Dec	Annual
332 SOUTH													
SD 79 Ralph													
						HARDING							
# of Days Monitored		10		21	26								
2026	*	148	*	177	206								177
# of Days Monitored	25	22		20	31	29	30	30	28	28	22		
2025	143	157	*	175	225	273	252	258	226	213	176	*	210
% CHG. MO.		-5.73%		1.14%	-8.44%								
% CHG. YR.				1.14%	-4.25%								
Rural Principal Arterial Interstate													
006 EAST													
I 90 CHAMBERLAIN REST AREA-1.5 MI SE OF CHAM.													
						BRULE							
# of Days Monitored	31	28	28	30	31								
2026	190	217	308	371	670								351
# of Days Monitored	31	28	31	29	29	30	31	31	30	31	29	31	
2025	199	235	318	390	650	1,044	1,070	949	875	540	300	205	565
% CHG. MO.	-4.52%	-7.66%	-3.14%	-4.87%	3.08%								
% CHG. YR.		-6.22%	-5.06%	-4.10%	0.10%								
011 NORTH													
I 29 WARD REST AREA-3 MI. S. OF BROOKINGS													
						MOODY							
# of Days Monitored	31	28	31	30	31								
2026	246	258	288	360	445								319
# of Days Monitored	31	28	31	30	29	30	21	31	30	31	30	31	
2025	237	238	296	343	426	469	491	467	437	405	312	260	365
% CHG. MO.	3.80%	8.40%	-2.70%	4.96%	4.46%								
% CHG. YR.		6.11%	2.25%	1.41%	4.68%								
014 NORTH													
I 29 WILMOT REST AREA AT JCT SD 15													
						ROBERTS							
# of Days Monitored	28	28	30	30	31								
2026	94	113	146	175	237								153
# of Days Monitored	25	28	29	30	28	30	29	31		31	30	31	
2025	97	101	145	182	223	264	285	261	*	196	156	101	183
% CHG. MO.	-3.09%	11.88%	0.69%	-3.85%	6.28%								
% CHG. YR.		4.55%	5.28%	-1.83%	1.73%								

NOTE: The statistics provided throughout this report are a general overview of the monthly traffic trends from approximately 75 permanent traffic monitoring locations throughout the state. For South Dakota's official travel trend, please refer to the annual vehicle miles travel report, which includes data from the permanent traffic monitoring locations in addition to approximately 7,000 short-term count locations.

Station Direction Year	Jan	Feb	Mar	Apr	May	Jun	Jul	Aug	Sep	Oct	Nov	Dec	Annual
111 NORTH													
I 29 NORTH OF BERESFORD						LINCOLN							
# of Days Monitored	29	26	27	30	29								
2026	8,125	9,038	9,359	10,294	11,131								9,589
# of Days Monitored	31	28	26	26	31	29	24	25	27	31	25	31	
2025	7,889	8,156	9,058	10,087	11,000	11,571	11,531	11,006	10,647	10,510	9,390	8,356	9,933
% CHG. MO.	2.99%	10.81%	3.32%	2.05%	1.19%								
% CHG. YR.		6.97%	6.87%	2.65%	1.60%								
111 SOUTH													
I 29 NORTH OF BERESFORD						LINCOLN							
# of Days Monitored	29	26	27	30	29								
2026	8,283	9,045	9,214	9,977	10,698								9,443
# of Days Monitored	31	28	26	26	31	29	24	25	27	31	25	31	
2025	8,023	8,188	8,879	9,801	10,592	11,251	11,501	11,475	10,816	10,751	9,767	8,479	9,960
% CHG. MO.	3.24%	10.47%	3.77%	1.80%	1%								
% CHG. YR.		6.89%	6.98%	2.74%	1.38%								
181 EAST													
I 90 SOUTHEAST OF WALL						PENNINGTON							
# of Days Monitored	28	28	28	30	30								
2026	2,094	2,406	2,785	2,864	3,679								2,766
# of Days Monitored	31	27	28	28	31	27	28	29	30	31	20	29	
2025	2,006	2,254	2,745	2,910	3,736	5,062	5,371	5,658	4,606	3,703	2,953	2,323	3,611
% CHG. MO.	4.39%	6.74%	1.46%	-1.58%	-1.53%								
% CHG. YR.		5.63%	3.84%	-0.11%	-1.55%								
181 WEST													
I 90 SOUTHEAST OF WALL						PENNINGTON							
# of Days Monitored	28	28	28	30	30								
2026	2,106	2,410	2,754	2,893	3,875								2,808
# of Days Monitored	31	27	28	28	31	27	28	29	30	31	20	29	
2025	2,041	2,263	2,668	2,913	3,928	5,149	5,435	5,129	4,312	3,495	2,792	2,425	3,546
% CHG. MO.	3.18%	6.50%	3.22%	-0.69%	-1.35%								
% CHG. YR.		4.93%	4.73%	1.18%	-1.07%								

NOTE: The statistics provided throughout this report are a general overview of the monthly traffic trends from approximately 75 permanent traffic monitoring locations throughout the state. For South Dakota's official travel trend, please refer to the annual vehicle miles travel report, which includes data from the permanent traffic monitoring locations in addition to approximately 7,000 short-term count locations.

Station Direction Year	Jan	Feb	Mar	Apr	May	Jun	Jul	Aug	Sep	Oct	Nov	Dec	Annual
182 NORTH													
I 29 SOUTH OF JUNCTION CITY						UNION							
# of Days Monitored	30	25	23	30	28								
2026	5,743	6,301	6,778	7,382	8,116								6,864
# of Days Monitored	28	24	25	27	27	26	23	24	25	30	27	28	
2025	5,585	5,849	6,435	7,211	8,070	8,537	8,566	7,935	7,779	7,647	6,836	6,084	7,211
% CHG. MO.	2.83%	7.73%	5.33%	2.37%	0.57%								
% CHG. YR.		5.33%	6.47%	3.77%	1.42%								
182 SOUTH													
I 29 SOUTH OF JUNCTION CITY						UNION							
# of Days Monitored	30	25	23	30	28								
2026	5,959	6,458	6,817	7,313	7,885								6,886
# of Days Monitored	28	24	25	27	27	26	23	24	25	30	27	28	
2025	5,733	6,001	6,429	7,064	7,941	8,427	8,677	8,434	8,107	8,029	7,297	6,400	7,378
% CHG. MO.	3.94%	7.62%	6.04%	3.52%	-0.71%								
% CHG. YR.		5.82%	6.80%	4.72%	1.29%								
186 EAST													
I 90 WEST OF KIMBALL						AURORA							
# of Days Monitored	18	28	18	28	28								
2026	2,831	3,003	3,807	3,711	4,652								3,601
# of Days Monitored	31	28	30	30	31	30	31	31	30	27	24	31	
2025	2,693	3,048	3,354	3,728	4,789	5,858	6,181	5,969	5,331	4,812	3,936	2,950	4,387
% CHG. MO.	5.12%	-1.48%	13.51%	-0.46%	-2.86%								
% CHG. YR.		1.62%	6.37%	6.16%	-1.81%								
186 WEST													
I 90 WEST OF KIMBALL						AURORA							
# of Days Monitored	18	28	18	28	28								
2026	2,831	2,952	3,807	3,711	4,652								3,591
# of Days Monitored	31	28	30	30	31	30	31	31	30	27	24	31	
2025	2,738	2,984	3,263	3,705	5,118	6,200	6,388	5,749	5,115	4,812	3,936	2,950	4,413
% CHG. MO.	3.40%	-1.07%	16.67%	0.16%	-9.11%								
% CHG. YR.		1.07%	8.20%	7.89%	-5.21%								

NOTE: The statistics provided throughout this report are a general overview of the monthly traffic trends from approximately 75 permanent traffic monitoring locations throughout the state. For South Dakota's official travel trend, please refer to the annual vehicle miles travel report, which includes data from the permanent traffic monitoring locations in addition to approximately 7,000 short-term count locations.

Station Direction Year	Jan	Feb	Mar	Apr	May	Jun	Jul	Aug	Sep	Oct	Nov	Dec	Annual
195 NORTH													
I 29 NORTH OF WATERTOWN						CODINGTON							
# of Days Monitored	29	25	27	24	28								
2026	3,264	3,632	3,961	4,312	4,813								3,996
# of Days Monitored	27	28	29	27	30	28	28	28	30	24	18	31	
2025	3,250	3,290	3,681	4,040	4,613	4,850	4,841	4,604	4,506	4,575	3,960	3,505	4,143
% CHG. MO.	0.43%	10.40%	7.61%	6.73%	4.34%								
% CHG. YR.		5.44%	8.92%	7.15%	5.45%								
195 SOUTH													
I 29 NORTH OF WATERTOWN						CODINGTON							
# of Days Monitored	29	25	27	24	28								
2026	3,420	3,735	3,953	4,249	4,773								4,026
# of Days Monitored	27	28	29	27	30	28	28	28	30	24	18	31	
2025	3,375	3,393	3,639	3,874	4,542	4,849	5,007	4,725	4,715	4,593	4,139	3,644	4,208
% CHG. MO.	1.33%	10.08%	8.63%	9.68%	5.09%								
% CHG. YR.		5.72%	9.33%	9.17%	7.20%								
314 NORTH													
I 29 SOUTH OF JEFFERSON						UNION							
# of Days Monitored	31	28	31	29	31								
2026	6,933	7,700	7,957	8,364	10,686								8,328
# of Days Monitored	30	25	26	30	25	26	30	31	30	30	30	30	
2025	6,479	6,618	7,165	7,762	15,781	12,750	9,048	9,340	9,429	9,336	8,175	7,413	9,108
% CHG. MO.	7.01%	16.35%	11.05%	7.76%	-32.29%								
% CHG. YR.		11.73%	13.60%	9.34%	-19.08%								
314 SOUTH													
I 29 SOUTH OF JEFFERSON						UNION							
# of Days Monitored	31	28	31	29	31								
2026	6,693	7,472	7,754	8,205	8,908								7,806
# of Days Monitored	30	25	26	30	25	26	30	31	30	30	30	30	
2025	6,268	6,413	7,164	7,645	10,285	9,336	8,485	8,521	8,727	8,706	7,674	7,110	8,028
% CHG. MO.	6.78%	16.51%	8.24%	7.33%	-13.39%								
% CHG. YR.		11.70%	12.15%	7.77%	-4.56%								

NOTE: The statistics provided throughout this report are a general overview of the monthly traffic trends from approximately 75 permanent traffic monitoring locations throughout the state. For South Dakota's official travel trend, please refer to the annual vehicle miles travel report, which includes data from the permanent traffic monitoring locations in addition to approximately 7,000 short-term count locations.

Station Direction Year	Jan	Feb	Mar	Apr	May	Jun	Jul	Aug	Sep	Oct	Nov	Dec	Annual
320 NORTH													
I 29 EAST OF DAVIS						LINCOLN							
# of Days Monitored	30	23	31	26	27								
2026	8,707	9,746	10,669	11,495	12,955								10,714
# of Days Monitored	31	22	18	30	23	23	26	27	30	29	30	27	
2025	7,750	8,396	9,009	10,057	10,253	11,037	11,186	11,067	11,186	11,354	10,365	9,430	10,091
% CHG. MO.	12.35%	16.08%	18.43%	14.30%	26.35%								
% CHG. YR.		14.29%	17.29%	16.25%	20.38%								
320 SOUTH													
I 29 EAST OF DAVIS						LINCOLN							
# of Days Monitored	30	23	31	26	27								
2026	9,101	9,751	10,317	10,709	12,061								10,388
# of Days Monitored	31	22	18	30	23	23	26	27	30	29	30	27	
2025	7,848	8,670	9,571	9,727	10,793	11,358	11,711	11,574	11,745	11,731	10,866	9,360	10,413
% CHG. MO.	15.97%	12.47%	7.79%	10.10%	11.75%								
% CHG. YR.		14.13%	10.02%	8.95%	10.96%								
329 EAST													
I 90 WEST OF NEW UNDERWOOD						PENNINGTON							
# of Days Monitored	27	23	24	26	30								
2026	3,257	3,771	4,193	4,144	5,441								4,161
# of Days Monitored	27	27	29	29	28	29	26	26	24	22	26	26	
2025	2,959	3,179	3,803	4,098	5,070	6,392	6,704	6,779	6,345	5,518	4,429	3,559	4,903
% CHG. MO.	10.07%	18.62%	10.26%	1.12%	7.32%								
% CHG. YR.		14.50%	14.06%	5.52%	4.55%								
329 WEST													
I 90 WEST OF NEW UNDERWOOD						PENNINGTON							
# of Days Monitored	27	23	24	26	30								
2026	3,347	3,829	4,131	4,231	5,730								4,254
# of Days Monitored	27	27	29	29	28	29	26	26	24	22	26	26	
2025	3,066	3,178	3,758	4,099	5,395	6,783	7,033	6,888	6,403	5,314	4,362	3,744	5,002
% CHG. MO.	9.17%	20.48%	9.93%	3.22%	6.21%								
% CHG. YR.		14.93%	14.76%	6.43%	4.92%								

NOTE: The statistics provided throughout this report are a general overview of the monthly traffic trends from approximately 75 permanent traffic monitoring locations throughout the state. For South Dakota's official travel trend, please refer to the annual vehicle miles travel report, which includes data from the permanent traffic monitoring locations in addition to approximately 7,000 short-term count locations.

Station Direction Year	Jan	Feb	Mar	Apr	May	Jun	Jul	Aug	Sep	Oct	Nov	Dec	Annual
805 EAST													
I 90 WEST OF VIVIAN						LYMAN							
# of Days Monitored	31	28	31	19	30								
2026	2,144	2,393	2,825	3,610	4,073								3,009
# of Days Monitored	31	28	31	29	31	23	31	31	30	21	28	30	
2025	2,151	2,342	2,871	3,096	3,909	5,049	5,649	5,699	4,755	4,221	3,340	2,516	3,800
% CHG. MO.	-0.33%	2.18%	-1.60%	16.60%	4.20%								
% CHG. YR.		0.98%	0.10%	7.84%	9.68%								
805 WEST													
I 90 WEST OF VIVIAN						LYMAN							
# of Days Monitored	31	28	31	19	30								
2026	2,244	2,371	2,762	4,042	4,309								3,146
# of Days Monitored	31	28	31	29	31	23	31	31	30	21	28	30	
2025	2,204	2,353	2,821	3,068	4,256	5,515	5,881	5,361	4,649	4,037	3,157	2,636	3,828
% CHG. MO.	1.81%	0.76%	-2.09%	31.75%	1.25%								
% CHG. YR.		1.27%	-0.79%	15.54%	14.02%								
806 NORTH													
I 29 NORTH OF SIOUX FALLS						MINNEHAHA							
# of Days Monitored	31	28	30	30	31								
2026	9,331	10,267	10,693	11,120	11,870								10,656
# of Days Monitored	31	28	31	30	31	30	31	31	30	31	30	31	
2025	9,202	9,424	10,144	10,701	11,355	11,594	11,874	11,719	11,325	11,770	10,642	9,426	10,765
% CHG. MO.	1.40%	8.95%	5.41%	3.92%	4.54%								
% CHG. YR.		5.22%	7.11%	4.64%	4.23%								
806 SOUTH													
I 29 NORTH OF SIOUX FALLS						MINNEHAHA							
# of Days Monitored	31	28	30	30	31								
2026	9,401	10,392	10,689	11,013	11,850								10,669
# of Days Monitored	31	28	31	30	31	30	31	31	30	31	30	31	
2025	9,263	9,556	10,087	10,568	11,288	11,669	11,896	11,628	11,499	11,979	10,972	9,708	10,843
% CHG. MO.	1.49%	8.75%	5.97%	4.21%	4.98%								
% CHG. YR.		5.18%	7.32%	5.07%	4.61%								

NOTE: The statistics provided throughout this report are a general overview of the monthly traffic trends from approximately 75 permanent traffic monitoring locations throughout the state. For South Dakota's official travel trend, please refer to the annual vehicle miles travel report, which includes data from the permanent traffic monitoring locations in addition to approximately 7,000 short-term count locations.

Station Direction Year	Jan	Feb	Mar	Apr	May	Jun	Jul	Aug	Sep	Oct	Nov	Dec	Annual
807 EAST													
I 90 EAST OF MITCHELL													
HANSON													
# of Days Monitored	31	28	29	30	31								
2026	4,883	5,460	5,986	6,243	7,126								5,940
# of Days Monitored	31	28	31	30	31	30	31	31	30	30	16	27	
2025	4,727	4,964	5,630	6,437	7,307	8,598	8,926	8,845	7,793	7,346	6,527	5,251	6,863
% CHG. MO.	3.30%	9.99%	6.32%	-3.01%	-2.48%								
% CHG. YR.		6.73%	8.04%	1.34%	-2.73%								
807 WEST													
I 90 EAST OF MITCHELL													
HANSON													
# of Days Monitored	31	28	29	30	31								
2026	4,906	5,486	6,013	6,200	7,541								6,029
# of Days Monitored	31	28	31	30	31	30	31	31	30	30	16	27	
2025	4,790	4,958	5,609	6,311	7,532	8,843	9,019	8,421	7,571	7,082	6,475	5,259	6,822
% CHG. MO.	2.42%	10.65%	7.20%	-1.76%	0.12%								
% CHG. YR.		6.61%	8.82%	2.46%	-0.74%								
809 NORTH													
I 29 SOUTH OF ELK POINT													
UNION													
# of Days Monitored	31	28	31	30	31								
2026	6,515	7,153	7,531	8,180	8,913								7,658
# of Days Monitored	31	28	31	30	31	30	30	27	28	31	30	31	
2025	6,292	6,594	7,225	8,111	8,893	9,465	9,375	8,844	8,627	8,509	7,662	6,769	8,030
% CHG. MO.	3.54%	8.48%	4.24%	0.85%	0.22%								
% CHG. YR.		6.07%	6.26%	2.45%	0.52%								
809 SOUTH													
I 29 SOUTH OF ELK POINT													
UNION													
# of Days Monitored	31	28	31	30	31								
2026	6,691	7,290	7,581	8,009	8,639								7,642
# of Days Monitored	31	28	31	30	31	30	30	27	28	31	30	31	
2025	6,419	6,715	7,159	7,907	8,440	9,219	9,413	9,148	8,987	8,837	8,043	7,032	8,110
% CHG. MO.	4.24%	8.56%	5.89%	1.29%	2.36%								
% CHG. YR.		6.45%	7.19%	3.48%	1.84%								

NOTE: The statistics provided throughout this report are a general overview of the monthly traffic trends from approximately 75 permanent traffic monitoring locations throughout the state. For South Dakota's official travel trend, please refer to the annual vehicle miles travel report, which includes data from the permanent traffic monitoring locations in addition to approximately 7,000 short-term count locations.

Station Direction Year	Jan	Feb	Mar	Apr	May	Jun	Jul	Aug	Sep	Oct	Nov	Dec	Annual
813 EAST													
I 90 Valley Springs													
MINNEHAHA													
# of Days Monitored	31	28	30	30	31								
2026	6,437	7,035	7,605	8,130	8,893								7,620
# of Days Monitored	31	28	31	30	31	29	31	31	30	31	30	31	
2025	6,409	6,473	7,156	7,960	8,330	9,016	9,586	9,825	8,850	8,452	7,773	6,960	8,066
% CHG. MO.	0.44%	8.68%	6.27%	2.14%	6.76%								
% CHG. YR.		4.58%	7.42%	4.09%	4.50%								
813 WEST													
I 90 Valley Springs													
MINNEHAHA													
# of Days Monitored	31	28	30	30	31								
2026	6,369	6,869	7,385	7,827	8,731								7,436
# of Days Monitored	31	28	31	30	31	29	31	31	30	31	30	31	
2025	6,306	6,312	6,926	7,650	8,293	9,106	9,604	9,484	8,679	8,218	7,489	6,802	7,906
% CHG. MO.	1%	8.82%	6.63%	2.31%	5.28%								
% CHG. YR.		4.91%	7.67%	4.36%	3.86%								
901 EAST													
I 90 WEST OF TILFORD													
MEADE													
# of Days Monitored	31	28	31	30	31								
2026	8,668	9,319	9,481	9,708	11,062								9,648
# of Days Monitored	31	28	31	30	31	29	29	31	30	31	30	31	
2025	7,781	8,235	9,125	9,677	11,068	12,720	13,173	15,258	12,118	11,283	9,780	8,879	10,758
% CHG. MO.	11.40%	13.16%	3.90%	0.32%	-0.05%								
% CHG. YR.		12.31%	8.29%	2.06%	0.12%								
901 WEST													
I 90 WEST OF TILFORD													
MEADE													
# of Days Monitored	31	28	31	30	31								
2026	8,455	9,333	9,452	9,706	11,235								9,636
# of Days Monitored	31	28	31	30	31	29	29	31	30	31	30	31	
2025	7,715	8,208	9,079	9,650	11,327	12,922	13,464	16,153	11,926	11,070	9,435	8,805	10,813
% CHG. MO.	9.59%	13.71%	4.11%	0.58%	-0.81%								
% CHG. YR.		11.71%	8.67%	2.29%	-0.17%								

NOTE: The statistics provided throughout this report are a general overview of the monthly traffic trends from approximately 75 permanent traffic monitoring locations throughout the state. For South Dakota's official travel trend, please refer to the annual vehicle miles travel report, which includes data from the permanent traffic monitoring locations in addition to approximately 7,000 short-term count locations.

Station Direction Year	Jan	Feb	Mar	Apr	May	Jun	Jul	Aug	Sep	Oct	Nov	Dec	Annual
910 NORTH													
I 29 SOUTH OF SISSETON						ROBERTS							
# of Days Monitored	31	28	27	29	31								
2026	2,125	2,404	2,789	2,850	3,180								2,670
# of Days Monitored	31	25	28	29	31	30	30	31	28	30	30	31	
2025	1,992	2,090	2,416	2,606	2,875	3,093	3,196	2,962	2,836	2,823	2,515	2,207	2,634
% CHG. MO.	6.68%	15.02%	15.44%	9.36%	10.61%								
% CHG. YR.		10.95%	15.25%	12.29%	10.02%								
910 SOUTH													
I 29 SOUTH OF SISSETON						ROBERTS							
# of Days Monitored	31	28	27	29	31								
2026	2,126	2,337	2,567	2,640	2,982								2,530
# of Days Monitored	31	25	28	29	31	30	30	31	28	30	30	31	
2025	1,983	2,035	2,234	2,379	2,693	2,937	3,165	2,950	2,838	2,946	2,669	2,296	2,594
% CHG. MO.	7.21%	14.84%	14.91%	10.97%	10.73%								
% CHG. YR.		11.08%	14.87%	12.88%	10.84%								
Rural Principal Arterial Other													
101 EAST													
US 12 EAST OF MCINTOSH						CORSON							
# of Days Monitored	16	28	29	30	30								
2026	139	168	164	170	202								169
# of Days Monitored	30	28	29	30	31	29	30	29	16	31	29	31	
2025	148	138	166	174	165	195	188	217	230	243	200	148	184
% CHG. MO.	-6.08%	21.74%	-1.20%	-2.30%	22.42%								
% CHG. YR.		7.34%	9.21%	-1.76%	9.73%								
101 WEST													
US 12 EAST OF MCINTOSH						CORSON							
# of Days Monitored	16	28	29	30	30								
2026	148	172	170	177	210								175
# of Days Monitored	30	28	29	30	31	29	30	29	16	31	29	31	
2025	155	144	170	186	176	199	197	222	233	252	204	152	191
% CHG. MO.	-4.52%	19.44%	0%	-4.84%	19.32%								
% CHG. YR.		7.02%	8.92%	-2.53%	6.91%								

NOTE: The statistics provided throughout this report are a general overview of the monthly traffic trends from approximately 75 permanent traffic monitoring locations throughout the state. For South Dakota's official travel trend, please refer to the annual vehicle miles travel report, which includes data from the permanent traffic monitoring locations in addition to approximately 7,000 short-term count locations.

Station Direction Year	Jan	Feb	Mar	Apr	May	Jun	Jul	Aug	Sep	Oct	Nov	Dec	Annual
102 NORTH													
SD 79 SOUTH OF NEWELL						BUTTE							
# of Days Monitored	25	28	28	30	31								
2026	738	862	873	908	1,134								903
# of Days Monitored	30	28	25	29	28	28	27	29	24	24	29	29	
2025	720	777	858	917	1,085	1,245	1,328	1,528	1,033	885	941	807	1,010
% CHG. MO.	2.50%	10.94%	1.75%	-0.98%	4.52%								
% CHG. YR.		6.88%	6.12%	0.34%	2%								
102 SOUTH													
SD 79 SOUTH OF NEWELL						BUTTE							
# of Days Monitored	25	28	28	30	31								
2026	740	865	874	893	1,144								903
# of Days Monitored	30	28	25	29	28	28	27	28	24	24	29	29	
2025	724	789	858	934	1,083	1,260	1,344	1,507	1,105	863	948	820	1,020
% CHG. MO.	2.21%	9.63%	1.86%	-4.39%	5.63%								
% CHG. YR.		6.08%	5.59%	-1.40%	0.99%								
103 EAST													
SD 50 EAST OF GAYVILLE						CLAY							
# of Days Monitored	31	26	27	30	31								
2026	2,240	2,422	2,460	2,627	2,741								2,498
# of Days Monitored	22	28	30	30	31	30	31	31	14	30	27	31	
2025	2,380	2,325	2,306	2,591	2,824	2,829	2,942	2,917	2,917	2,855	2,491	2,231	2,634
% CHG. MO.	-5.88%	4.17%	6.68%	1.39%	-2.94%								
% CHG. YR.		-0.91%	5.42%	3.88%	-0.87%								
103 WEST													
SD 50 EAST OF GAYVILLE						CLAY							
# of Days Monitored	31	26	27	30	31								
2026	2,240	2,422	2,460	2,627	2,741								2,498
# of Days Monitored	23	28	30	30	31	30	31	31	14	30	27	31	
2025	2,386	2,363	2,354	2,638	2,885	3,027	2,948	3,062	2,917	2,855	2,491	2,231	2,680
% CHG. MO.	-6.12%	2.50%	4.50%	-0.42%	-4.99%								
% CHG. YR.		-1.83%	3.50%	1.90%	-2.81%								

NOTE: The statistics provided throughout this report are a general overview of the monthly traffic trends from approximately 75 permanent traffic monitoring locations throughout the state. For South Dakota's official travel trend, please refer to the annual vehicle miles travel report, which includes data from the permanent traffic monitoring locations in addition to approximately 7,000 short-term count locations.

Station Direction Year	Jan	Feb	Mar	Apr	May	Jun	Jul	Aug	Sep	Oct	Nov	Dec	Annual
104 NORTH													
SD 73 SOUTH OF KADOKA						JACKSON							
# of Days Monitored	31	28	19	30	31								
2026	207	246	250	243	262								242
# of Days Monitored	31	27	29	30	31	30	31	31	30	31	29	31	
2025	234	235	253	279	330	337	350	334	322	315	294	253	295
% CHG. MO.	-11.54%	4.68%	-1.19%	-12.90%	-20.61%								
% CHG. YR.		-3.41%	1.64%	-7.33%	-17.08%								
104 SOUTH													
SD 73 SOUTH OF KADOKA						JACKSON							
# of Days Monitored	31	28	19	30	31								
2026	206	232	239	223	257								231
# of Days Monitored	31	27	29	30	31	30	31	31	30	31	29	31	
2025	230	228	240	261	309	320	335	327	332	311	293	249	286
% CHG. MO.	-10.43%	1.75%	-0.42%	-14.56%	-16.83%								
% CHG. YR.		-4.37%	0.64%	-7.78%	-15.79%								
106 EAST													
US 14 WEST OF MIDLAND						HAAKON							
# of Days Monitored	30	27	23	29	31								
2026	236	279	278	292	358								289
# of Days Monitored	31	28	29	30	31	29	28	29	27	25	27	29	
2025	219	245	290	291	330	402	419	388	354	363	309	256	322
% CHG. MO.	7.76%	13.88%	-4.14%	0.34%	8.48%								
% CHG. YR.		10.99%	4.11%	-1.89%	4.67%								
106 WEST													
US 14 WEST OF MIDLAND						HAAKON							
# of Days Monitored	30	27	23	29	31								
2026	238	275	274	284	346								283
# of Days Monitored	31	28	29	30	31	29	28	29	27	25	27	29	
2025	218	250	282	288	314	395	419	375	342	347	304	257	316
% CHG. MO.	9.17%	10%	-2.84%	-1.39%	10.19%								
% CHG. YR.		9.62%	3.20%	-2.11%	4.65%								

NOTE: The statistics provided throughout this report are a general overview of the monthly traffic trends from approximately 75 permanent traffic monitoring locations throughout the state. For South Dakota's official travel trend, please refer to the annual vehicle miles travel report, which includes data from the permanent traffic monitoring locations in addition to approximately 7,000 short-term count locations.

Station Direction Year	Jan	Feb	Mar	Apr	May	Jun	Jul	Aug	Sep	Oct	Nov	Dec	Annual
108 NORTH													
US 81 South of Freeman	HUTCHINSON												
# of Days Monitored	31	28	29	30	30								
2026	773	821	838	920	1,037								878
# of Days Monitored	31	28	29	30	31	29	25	29	29	31	26	30	
2025	716	715	788	845	887	867	888	951	943	929	842	761	844
% CHG. MO.	7.96%	14.83%	6.35%	8.88%	16.91%								
% CHG. YR.		11.39%	10.38%	7.65%	12.99%								
108 SOUTH													
US 81 South of Freeman	HUTCHINSON												
# of Days Monitored	31	28	29	30	30								
2026	765	811	807	878	1,008								854
# of Days Monitored	31	28	29	30	31	29	25	29	29	31	26	30	
2025	723	711	769	833	885	866	885	948	947	945	844	754	842
% CHG. MO.	5.81%	14.06%	4.94%	5.40%	13.90%								
% CHG. YR.		9.90%	9.32%	5.18%	9.78%								
110 NORTH													
US 85 SOUTH OF BUFFALO	HARDING												
# of Days Monitored	29	28	24	28	30								
2026	457	476	534	563	676								541
# of Days Monitored	30	28	28	30	27	26	10	19	27	31	28	31	
2025	441	433	513	541	684	805	828	786	755	699	564	485	628
% CHG. MO.	3.63%	9.93%	4.09%	4.07%	-1.17%								
% CHG. YR.		6.75%	6.77%	4.08%	1.14%								
110 SOUTH													
US 85 SOUTH OF BUFFALO	HARDING												
# of Days Monitored	29	28	24	28	30								
2026	441	472	508	517	656								519
# of Days Monitored	30	28	28	30	27	26	10	19	27	31	28	31	
2025	415	432	473	502	663	805	838	802	762	702	592	515	625
% CHG. MO.	6.27%	9.26%	7.40%	2.99%	-1.06%								
% CHG. YR.		7.79%	8.29%	5.13%	0.69%								

NOTE: The statistics provided throughout this report are a general overview of the monthly traffic trends from approximately 75 permanent traffic monitoring locations throughout the state. For South Dakota's official travel trend, please refer to the annual vehicle miles travel report, which includes data from the permanent traffic monitoring locations in addition to approximately 7,000 short-term count locations.

Station Direction Year	Jan	Feb	Mar	Apr	May	Jun	Jul	Aug	Sep	Oct	Nov	Dec	Annual
157 EAST													
US 14 EAST OF PIERRE						HUGHES							
# of Days Monitored	31	28	27	30	30								
2026	1,267	1,396	1,432	1,484	1,630								1,442
# of Days Monitored	28	28	29	29	30	30	31	28	30	30	29	31	
2025	1,244	1,293	1,413	1,548	1,620	1,758	1,647	1,722	1,610	1,681	1,530	1,332	1,533
% CHG. MO.	1.85%	7.97%	1.34%	-4.13%	0.62%								
% CHG. YR.		4.97%	4.51%	-1.52%	-1.70%								
157 WEST													
US 14 EAST OF PIERRE						HUGHES							
# of Days Monitored	31	28	27	30	30								
2026	1,276	1,389	1,388	1,453	1,619								1,425
# of Days Monitored	28	28	29	29	30	30	30	26	30	30	29	31	
2025	1,266	1,277	1,367	1,502	1,595	1,742	1,702	1,788	1,598	1,674	1,544	1,358	1,534
% CHG. MO.	0.79%	8.77%	1.54%	-3.26%	1.50%								
% CHG. YR.		4.80%	5.03%	-0.98%	-0.81%								
158 EAST													
US 212 WEST OF HENRY						CODINGTON							
# of Days Monitored	31	28	30	30	30								
2026	1,151	1,228	1,259	1,312	1,511								1,292
# of Days Monitored	31	28	30	30	30	29	31	31	30	23	29	31	
2025	1,151	1,172	1,131	1,348	1,346	1,382	1,445	1,460	1,457	1,478	1,341	1,189	1,325
% CHG. MO.	0%	4.78%	11.32%	-2.67%	12.26%								
% CHG. YR.		2.41%	7.99%	3.71%	4.79%								
158 WEST													
US 212 WEST OF HENRY						CODINGTON							
# of Days Monitored	31	28	30	30	30								
2026	1,137	1,201	1,253	1,292	1,489								1,274
# of Days Monitored	31	28	30	30	30	29	31	31	30	23	29	31	
2025	1,142	1,158	1,118	1,322	1,343	1,398	1,447	1,452	1,435	1,560	1,362	1,171	1,326
% CHG. MO.	-0.44%	3.71%	12.08%	-2.27%	10.87%								
% CHG. YR.		1.65%	7.82%	4.30%	4.35%								

NOTE: The statistics provided throughout this report are a general overview of the monthly traffic trends from approximately 75 permanent traffic monitoring locations throughout the state. For South Dakota's official travel trend, please refer to the annual vehicle miles travel report, which includes data from the permanent traffic monitoring locations in addition to approximately 7,000 short-term count locations.

Station Direction Year	Jan	Feb	Mar	Apr	May	Jun	Jul	Aug	Sep	Oct	Nov	Dec	Annual
160 EAST													
US 12 WEST OF GLENHAM						WALWORTH							
# of Days Monitored	31	28	30	30	31								
2026	781	831	859	899	1,126								899
# of Days Monitored	31	28	30	29	31	28	30	31	29	31	29	31	
2025	809	776	884	938	1,041	1,181	1,123	1,091	1,056	1,113	991	785	982
% CHG. MO.	-3.46%	7.09%	-2.83%	-4.16%	8.17%								
% CHG. YR.		1.70%	1.81%	-3.51%	2.32%								
160 WEST													
US 12 WEST OF GLENHAM						WALWORTH							
# of Days Monitored	31	28	30	30	31								
2026	787	830	861	908	1,138								905
# of Days Monitored	31	28	30	29	31	28	30	31	29	31	29	31	
2025	806	776	885	945	1,061	1,192	1,124	1,097	1,053	1,112	986	788	985
% CHG. MO.	-2.36%	6.96%	-2.71%	-3.92%	7.26%								
% CHG. YR.		2.21%	1.81%	-3.33%	1.99%								
161 EAST													
US 16 EAST OF HILL CITY						PENNINGTON							
# of Days Monitored	30	28	29	26	30								
2026	2,034	2,334	2,393	2,510	3,486								2,551
# of Days Monitored	31	28	27	30	29	28	31	30	30	31	27	28	
2025	1,804	1,888	2,241	2,556	3,510	4,742	5,080	5,009	4,092	3,240	2,319	2,249	3,228
% CHG. MO.	12.75%	23.62%	6.78%	-1.80%	-0.68%								
% CHG. YR.		18.31%	14.48%	2.21%	-1.15%								
161 WEST													
US 16 EAST OF HILL CITY						PENNINGTON							
# of Days Monitored	30	28	29	26	30								
2026	1,962	2,259	2,323	2,431	3,373								2,470
# of Days Monitored	31	28	27	30	29	28	31	30	30	31	27	28	
2025	1,778	1,863	2,148	2,458	3,389	4,586	4,939	4,876	3,929	3,026	2,268	2,189	3,121
% CHG. MO.	10.35%	21.26%	8.15%	-1.10%	-0.47%								
% CHG. YR.		15.93%	14.24%	3.21%	-0.74%								

NOTE: The statistics provided throughout this report are a general overview of the monthly traffic trends from approximately 75 permanent traffic monitoring locations throughout the state. For South Dakota's official travel trend, please refer to the annual vehicle miles travel report, which includes data from the permanent traffic monitoring locations in addition to approximately 7,000 short-term count locations.

Station	Direction	Year	Jan	Feb	Mar	Apr	May	Jun	Jul	Aug	Sep	Oct	Nov	Dec	Annual
165 NORTH															
SD 37 SOUTHEAST OF FORESTBURG															
SANBORN															
	# of Days Monitored		30	28	31	30	30								
	2026		1,250	1,214	1,179	1,322	1,376								1,268
	# of Days Monitored		30	27	21	30	31	29	31	31	30	31	16	19	
	2025		1,116	1,186	1,293	1,326	1,346	1,389	1,301	1,494	1,367	1,379	1,453	1,191	1,320
	% CHG. MO.		12.01%	2.36%	-8.82%	-0.30%	2.23%								
	% CHG. YR.			7.04%	-3.47%	-4.51%	0.97%								
165 SOUTH															
SD 37 SOUTHEAST OF FORESTBURG															
SANBORN															
	# of Days Monitored		30	28	31	30	30								
	2026		1,014	1,178	1,148	1,324	1,374								1,208
	# of Days Monitored		30	27	21	30	31	29	31	31	30	31	16	19	
	2025		1,119	1,132	1,098	1,308	1,321	1,353	1,305	1,444	1,356	1,352	1,064	1,103	1,246
	% CHG. MO.		-9.38%	4.06%	4.55%	1.22%	4.01%								
	% CHG. YR.			-2.62%	4.30%	2.74%	2.62%								
174 NORTH															
US 385 NORTH OF HOT SPRINGS															
FALL RIVER															
	# of Days Monitored		16	28	29	29	31								
	2026		438	526	599	624	838								605
	# of Days Monitored														
	2025		*	*	*	*	*	*	*	*	*	*	*	*	*
	% CHG. MO.														
	% CHG. YR.														
174 SOUTH															
US 385 NORTH OF HOT SPRINGS															
FALL RIVER															
	# of Days Monitored		16	28	29	29	31								
	2026		437	523	593	622	820								599
	# of Days Monitored														
	2025		*	*	*	*	*	*	*	*	*	*	*	*	*
	% CHG. MO.														
	% CHG. YR.														

NOTE: The statistics provided throughout this report are a general overview of the monthly traffic trends from approximately 75 permanent traffic monitoring locations throughout the state. For South Dakota's official travel trend, please refer to the annual vehicle miles travel report, which includes data from the permanent traffic monitoring locations in addition to approximately 7,000 short-term count locations.

Station	Direction	Year	Jan	Feb	Mar	Apr	May	Jun	Jul	Aug	Sep	Oct	Nov	Dec	Annual	
178 NORTH																
US 85 NORTH OF BELLE FOURCHE																
								BUTTE								
	# of Days Monitored		31	27	26	29	30									
	2026		589	626	681	700	822								684	
	# of Days Monitored		31	28	29	30	29	28	28	22	29	30	26	27		
	2025		562	554	648	685	803	921	890	866	880	878	740	625	754	
	% CHG. MO.		4.80%	13%	5.09%	2.19%	2.37%									
	% CHG. YR.			8.87%	8.74%	3.60%	2.28%									
178 SOUTH																
US 85 NORTH OF BELLE FOURCHE																
								BUTTE								
	# of Days Monitored		31	27	26	29	30									
	2026		586	637	682	682	823								682	
	# of Days Monitored		31	28	29	30	29	28	26	22	29	30	26	27		
	2025		556	569	632	658	801	908	949	946	908	903	793	674	775	
	% CHG. MO.		5.40%	11.95%	7.91%	3.65%	2.75%									
	% CHG. YR.			8.71%	9.83%	5.74%	3.15%									
202 EAST																
US 14A EAST OF US85 DEADWOOD																
								LAWRENCE								
	# of Days Monitored		31	28	29	29	31									
	2026		2,276	2,446	2,542	2,385	3,063								2,542	
	# of Days Monitored		31	28	27	30	30	30	28	28	30	31	27	30		
	2025		2,218	2,294	2,494	2,520	3,199	4,117	4,428	6,094	3,695	3,087	2,389	2,339	3,240	
	% CHG. MO.		2.61%	6.63%	1.92%	-5.36%	-4.25%									
	% CHG. YR.			4.65%	4.18%	-1.74%	-4.74%									
202 WEST																
US 14A EAST OF US85 DEADWOOD																
								LAWRENCE								
	# of Days Monitored		31	28	29	29	31									
	2026		2,208	2,428	2,513	2,333	2,999								2,496	
	# of Days Monitored		31	28	27	30	30	30	26	28	30	31	27	30		
	2025		2,151	2,278	2,475	2,485	3,192	4,064	4,581	6,221	3,513	2,985	2,377	2,404	3,227	
	% CHG. MO.		2.65%	6.58%	1.54%	-6.12%	-6.05%									
	% CHG. YR.			4.67%	3.96%	-2.30%	-6.08%									

NOTE: The statistics provided throughout this report are a general overview of the monthly traffic trends from approximately 75 permanent traffic monitoring locations throughout the state. For South Dakota's official travel trend, please refer to the annual vehicle miles travel report, which includes data from the permanent traffic monitoring locations in addition to approximately 7,000 short-term count locations.

Station Direction Year	Jan	Feb	Mar	Apr	May	Jun	Jul	Aug	Sep	Oct	Nov	Dec	Annual
208 NORTH													
US 83 NORTH OF VIVIAN						LYMAN							
# of Days Monitored		20	26		15								
2026	*	1,142	1,020	*	1,245								1,136
# of Days Monitored													
2025	*	*	*	*	*	*	*	*	*	*	*	*	*
% CHG. MO.													
% CHG. YR.													
208 SOUTH													
US 83 NORTH OF VIVIAN						LYMAN							
# of Days Monitored		20	26		15								
2026	*	1,101	968	*	1,199								1,089
# of Days Monitored													
2025	*	*	*	*	*	*	*	*	*	*	*	*	*
% CHG. MO.													
% CHG. YR.													
300 NORTH													
US 85 NORTH OF LUDLOW						HARDING							
# of Days Monitored	31	28	30	29	31								
2026	413	453	458	492	629								489
# of Days Monitored	31	28	31	30	31	30	29	31	30	30	30	30	
2025	372	381	424	458	593	715	721	710	682	640	548	476	560
% CHG. MO.	11.02%	18.90%	8.02%	7.42%	6.07%								
% CHG. YR.		15.01%	13.17%	7.71%	6.66%								
300 SOUTH													
US 85 NORTH OF LUDLOW						HARDING							
# of Days Monitored	31	28	30	29	31								
2026	420	449	482	526	637								503
# of Days Monitored	31	28	31	30	31	30	29	31	30	30	30	30	
2025	386	376	444	484	608	716	711	678	679	623	517	444	556
% CHG. MO.	8.81%	19.41%	8.56%	8.68%	4.77%								
% CHG. YR.		14.04%	13.54%	8.62%	6.50%								

NOTE: The statistics provided throughout this report are a general overview of the monthly traffic trends from approximately 75 permanent traffic monitoring locations throughout the state. For South Dakota's official travel trend, please refer to the annual vehicle miles travel report, which includes data from the permanent traffic monitoring locations in addition to approximately 7,000 short-term count locations.

Station	Direction	Year	Jan	Feb	Mar	Apr	May	Jun	Jul	Aug	Sep	Oct	Nov	Dec	Annual
301 EAST															
US 212 WEST OF BELLE FOURCHE															
BUTTE															
	# of Days Monitored		31	28	31	29	31								
	2026		877	963	984	1,068	1,269								1,032
	# of Days Monitored		29	25	30	28	16	30	26	31	28	27	30	13	
	2025		755	755	936	1,070	1,228	1,409	1,431	1,314	1,312	1,273	999	733	1,101
	% CHG. MO.		16.16%	27.55%	5.13%	-0.19%	3.34%								
	% CHG. YR.			21.85%	15.14%	2.29%	1.70%								
301 WEST															
US 212 WEST OF BELLE FOURCHE															
BUTTE															
	# of Days Monitored		31	28	31	29	31								
	2026		864	969	976	1,051	1,205								1,013
	# of Days Monitored		29	25	30	28	16	30	26	31	28	27	30	13	
	2025		723	739	927	1,022	1,149	1,350	1,473	1,337	1,353	1,309	1,013	747	1,095
	% CHG. MO.		19.50%	31.12%	5.29%	2.84%	4.87%								
	% CHG. YR.			25.38%	16.75%	4%	3.92%								
302 NORTH															
US 85 WY BORDER-SW OF CHEYENNE CROSSING															
LAWRENCE															
	# of Days Monitored		27	23	31	27	29								
	2026		150	157	144	190	255								179
	# of Days Monitored		12	14	26	20	15	15	29	28	30	29	19	23	
	2025		118	139	141	166	236	321	353	434	342	272	194	157	239
	% CHG. MO.		27.12%	12.95%	2.13%	14.46%	8.05%								
	% CHG. YR.			19.46%	7.50%	8.79%	10.70%								
302 SOUTH															
US 85 WY BORDER-SW OF CHEYENNE CROSSING															
LAWRENCE															
	# of Days Monitored		27	23	31	27	29								
	2026		127	153	151	173	252								171
	# of Days Monitored		12	14	26	20	15	15	29	28	30	29	19	23	
	2025		105	133	146	163	249	341	381	413	329	263	194	158	240
	% CHG. MO.		20.95%	15.04%	3.42%	6.13%	1.20%								
	% CHG. YR.			17.65%	8.96%	4.85%	3.16%								

NOTE: The statistics provided throughout this report are a general overview of the monthly traffic trends from approximately 75 permanent traffic monitoring locations throughout the state. For South Dakota's official travel trend, please refer to the annual vehicle miles travel report, which includes data from the permanent traffic monitoring locations in addition to approximately 7,000 short-term count locations.

Station Direction Year	Jan	Feb	Mar	Apr	May	Jun	Jul	Aug	Sep	Oct	Nov	Dec	Annual
304 EAST													
US 18 WEST OF EDGEMONT						FALL RIVER							
# of Days Monitored	31	27	30	28	31								
2026	425	467	536	551	763								548
# of Days Monitored	25	24	16	27	29	27	30	27	27	30	24	29	
2025	377	388	502	551	724	931	1,046	976	857	753	577	479	680
% CHG. MO.	12.73%	20.36%	6.77%	0%	5.39%								
% CHG. YR.		16.60%	12.70%	3.23%	3.06%								
304 WEST													
US 18 WEST OF EDGEMONT						FALL RIVER							
# of Days Monitored	31	27	30	28	31								
2026	424	455	540	572	762								551
# of Days Monitored	25	24	16	27	29	27	30	27	27	30	24	29	
2025	381	379	542	580	772	953	1,012	991	829	725	564	466	683
% CHG. MO.	11.29%	20.05%	-0.37%	-1.38%	-1.30%								
% CHG. YR.		15.66%	8.03%	-0.89%	-1.33%								
305 EAST													
US 18 SW OF BATESLAND						SHANNON							
# of Days Monitored	31	28	31	28	31								
2026	507	565	576	596	582								565
# of Days Monitored	27	26	29	29	30	28	30	29	30	30	29	30	
2025	490	511	530	575	563	564	583	629	598	580	544	484	554
% CHG. MO.	3.47%	10.57%	8.68%	3.65%	3.37%								
% CHG. YR.		7.09%	9.61%	6.06%	3.51%								
305 WEST													
US 18 SW OF BATESLAND						SHANNON							
# of Days Monitored	31	28	31	28	31								
2026	529	588	598	617	610								588
# of Days Monitored	27	26	29	29	30	28	30	29	30	30	29	30	
2025	512	547	549	598	588	596	609	650	631	601	573	501	580
% CHG. MO.	3.32%	7.50%	8.93%	3.18%	3.74%								
% CHG. YR.		5.48%	8.21%	5.93%	3.46%								

NOTE: The statistics provided throughout this report are a general overview of the monthly traffic trends from approximately 75 permanent traffic monitoring locations throughout the state. For South Dakota's official travel trend, please refer to the annual vehicle miles travel report, which includes data from the permanent traffic monitoring locations in addition to approximately 7,000 short-term count locations.

Station Direction Year	Jan	Feb	Mar	Apr	May	Jun	Jul	Aug	Sep	Oct	Nov	Dec	Annual
309 NORTH													
US 83 NORTH OF HERREID						CAMPBELL							
# of Days Monitored	31	28	31	29	31								
2026	476	507	540	520	587								526
# of Days Monitored	31	25	26	30	30	30	30	31	30	30	30	30	
2025	467	409	485	516	551	573	540	574	590	627	519	485	528
% CHG. MO.	1.93%	23.96%	11.34%	0.78%	6.53%								
% CHG. YR.		12.21%	17.11%	5.89%	3.75%								
309 SOUTH													
US 83 NORTH OF HERREID						CAMPBELL							
# of Days Monitored	31	28	31	29	31								
2026	496	531	560	558	622								553
# of Days Monitored	31	25	26	30	30	30	30	31	30	30	30	30	
2025	473	430	526	537	565	606	575	616	633	619	530	485	550
% CHG. MO.	4.86%	23.49%	6.46%	3.91%	10.09%								
% CHG. YR.		13.73%	14.12%	5.17%	7.08%								
311 EAST													
US 14 EAST OF HARROLD						HUGHES							
# of Days Monitored	29	27	30	29	31								
2026	554	662	638	649	750								651
# of Days Monitored	30	28	31	30	30	30	31	31	30	30	30	30	
2025	507	550	594	677	708	819	801	789	805	803	750	609	701
% CHG. MO.	9.27%	20.36%	7.41%	-4.14%	5.93%								
% CHG. YR.		15.04%	13.64%	1.26%	1.01%								
311 WEST													
US 14 EAST OF HARROLD						HUGHES							
# of Days Monitored	29	27	30	29	31								
2026	562	677	657	662	753								662
# of Days Monitored	30	28	31	30	30	30	31	31	30	30	30	30	
2025	528	569	614	688	721	818	802	813	817	836	758	607	714
% CHG. MO.	6.44%	18.98%	7%	-3.78%	4.44%								
% CHG. YR.		12.94%	12.76%	1.31%	0.43%								

NOTE: The statistics provided throughout this report are a general overview of the monthly traffic trends from approximately 75 permanent traffic monitoring locations throughout the state. For South Dakota's official travel trend, please refer to the annual vehicle miles travel report, which includes data from the permanent traffic monitoring locations in addition to approximately 7,000 short-term count locations.

Station Direction Year	Jan	Feb	Mar	Apr	May	Jun	Jul	Aug	Sep	Oct	Nov	Dec	Annual
317 NORTH													
US 281 WEST OF FREDRICK						BROWN							
# of Days Monitored	31	28	31	30	31								
2026	653	664	634	836	818								721
# of Days Monitored	31	28	31	30	31	29	31	31	30	31	30	31	
2025	722	745	637	967	797	1,094	1,099	845	815	808	716	634	823
% CHG. MO.	-9.56%	-10.87%	-0.47%	-13.55%	2.63%								
% CHG. YR.		-10.22%	-6.08%	-8.35%	-6.24%								
317 SOUTH													
US 281 WEST OF FREDRICK						BROWN							
# of Days Monitored	31	28	31	30	31								
2026	658	661	626	831	812								718
# of Days Monitored	31	28	31	30	31	29	31	31	30	31	30	31	
2025	726	746	634	968	797	1,102	1,115	855	817	815	732	641	829
% CHG. MO.	-9.37%	-11.39%	-1.26%	-14.15%	1.88%								
% CHG. YR.		-10.39%	-6.74%	-9.05%	-6.91%								
319 NORTH													
US 85 CASTLEROCK						BUTTE							
# of Days Monitored	29	27	31	29	31								
2026	412	437	484	505	596								487
# of Days Monitored	22	24	28	29	30	29	29	31	30	30	21	29	
2025	391	393	428	481	569	673	685	663	643	652	510	442	544
% CHG. MO.	5.37%	11.20%	13.08%	4.99%	4.75%								
% CHG. YR.		8.29%	12.18%	8.80%	4.86%								
319 SOUTH													
US 85 CASTLEROCK						BUTTE							
# of Days Monitored	29	27	31	29	31								
2026	378	420	442	445	564								450
# of Days Monitored	22	24	28	29	30	29	29	31	30	30	21	29	
2025	350	433	421	422	530	634	664	676	639	654	528	454	534
% CHG. MO.	8%	-3%	4.99%	5.45%	6.42%								
% CHG. YR.		1.92%	0.94%	5.22%	5.99%								

NOTE: The statistics provided throughout this report are a general overview of the monthly traffic trends from approximately 75 permanent traffic monitoring locations throughout the state. For South Dakota's official travel trend, please refer to the annual vehicle miles travel report, which includes data from the permanent traffic monitoring locations in addition to approximately 7,000 short-term count locations.

Station Direction Year	Jan	Feb	Mar	Apr	May	Jun	Jul	Aug	Sep	Oct	Nov	Dec	Annual
323 EAST													
SD 34 WEST OF UNION CENTER													
MEADE													
# of Days Monitored	31	28	29	28	31								
2026	362	394	386	473	546								432
# of Days Monitored	23	24	16	20	30	28	24	31	30	31	30	31	
2025	348	363	384	485	504	571	554	603	571	548	485	448	489
% CHG. MO.	4.02%	8.54%	0.52%	-2.47%	8.33%								
% CHG. YR.		6.33%	4.42%	-1.15%	3.03%								
323 WEST													
SD 34 WEST OF UNION CENTER													
MEADE													
# of Days Monitored	31	28	29	28	31								
2026	309	340	331	407	482								374
# of Days Monitored	23	24	16	20	30	28	24	31	30	31	30	31	
2025	294	312	332	414	449	489	483	529	508	463	412	393	423
% CHG. MO.	5.10%	8.97%	-0.30%	-1.69%	7.35%								
% CHG. YR.		7.10%	4.19%	-1.07%	3.01%								
326 EAST													
US 212 EAST OF RIDGEVIEW													
DEWEY													
# of Days Monitored	26	26	27	23	25								
2026	239	250	261	247	301								260
# of Days Monitored	23	23	26	14	31	22	30	21	30	30	28	23	
2025	217	222	248	215	295	314	320	339	306	340	339	213	281
% CHG. MO.	10.14%	12.61%	5.24%	14.88%	2.03%								
% CHG. YR.		11.39%	8.72%	9.72%	7.45%								
326 WEST													
US 212 EAST OF RIDGEVIEW													
DEWEY													
# of Days Monitored	26	26	27	23	25								
2026	253	281	278	267	339								284
# of Days Monitored	23	23	26	14	31	22	30	21	30	30	28	23	
2025	231	227	267	228	337	349	352	361	348	378	362	244	307
% CHG. MO.	9.52%	23.79%	4.12%	17.11%	0.59%								
% CHG. YR.		16.59%	13.16%	10.10%	7.26%								

NOTE: The statistics provided throughout this report are a general overview of the monthly traffic trends from approximately 75 permanent traffic monitoring locations throughout the state. For South Dakota's official travel trend, please refer to the annual vehicle miles travel report, which includes data from the permanent traffic monitoring locations in addition to approximately 7,000 short-term count locations.

Station Direction Year	Jan	Feb	Mar	Apr	May	Jun	Jul	Aug	Sep	Oct	Nov	Dec	Annual
327 EAST													
US 12 WEST OF MCLAUGHLIN						CORSON							
# of Days Monitored	22	25	25	25	28								
2026	140	158	170	169	194								166
# of Days Monitored	25			30	31	26	28	26	25	29	30	27	
2025	157	*	*	178	219	188	160	216	217	222	212	186	196
% CHG. MO.	-10.83%			-5.06%	-11.42%								
% CHG. YR.					-8.56%								
327 WEST													
US 12 WEST OF MCLAUGHLIN						CORSON							
# of Days Monitored	22	25	25	25	28								
2026	149	160	172	181	208								174
# of Days Monitored	25			30	31	26	28	26	25	29	30	27	
2025	163	*	*	184	231	201	188	227	227	221	215	190	205
% CHG. MO.	-8.59%			-1.63%	-9.96%								
% CHG. YR.					-6.27%								
331 EAST													
US 12 EAST OF BOWDLE						EDMUNDS							
# of Days Monitored	30	27	28	27	30								
2026	462	485	495	548	604								519
# of Days Monitored	31	28	29	13	23	26	28	30	28	25	28	28	
2025	416	399	487	447	520	674	453	493	546	564	510	480	499
% CHG. MO.	11.06%	21.55%	1.64%	22.60%	16.15%								
% CHG. YR.		16.20%	10.61%	11.67%	19.13%								
331 WEST													
US 12 EAST OF BOWDLE						EDMUNDS							
# of Days Monitored	30	27	28	27	30								
2026	544	577	593	650	757								624
# of Days Monitored	31	28	29	13	23	26	28	30	28	25	28	28	
2025	527	489	637	571	715	545	702	722	746	754	668	574	638
% CHG. MO.	3.23%	18%	-6.91%	13.84%	5.87%								
% CHG. YR.		10.33%	3.91%	2.90%	9.41%								

NOTE: The statistics provided throughout this report are a general overview of the monthly traffic trends from approximately 75 permanent traffic monitoring locations throughout the state. For South Dakota's official travel trend, please refer to the annual vehicle miles travel report, which includes data from the permanent traffic monitoring locations in addition to approximately 7,000 short-term count locations.

Station Direction Year	Jan	Feb	Mar	Apr	May	Jun	Jul	Aug	Sep	Oct	Nov	Dec	Annual
801 NORTH													
SD 37 NORTH OF PARKSTON						HUTCHINSON							
# of Days Monitored	31	28	30	30	31								
2026	1,476	1,612	1,652	1,746	1,800								1,657
# of Days Monitored	30	28	31	29	31	30	31	31	29	31	30	31	
2025	1,459	1,512	1,597	1,778	1,837	1,914	1,815	1,858	1,828	1,831	1,681	1,534	1,720
% CHG. MO.	1.17%	6.61%	3.44%	-1.80%	-2.01%								
% CHG. YR.		3.94%	4.99%	0.68%	-1.91%								
801 SOUTH													
SD 37 NORTH OF PARKSTON						HUTCHINSON							
# of Days Monitored	31	28	30	30	31								
2026	1,487	1,623	1,671	1,761	1,844								1,677
# of Days Monitored	30	28	31	29	31	30	31	31	29	31	30	31	
2025	1,457	1,508	1,593	1,765	1,833	1,935	1,829	1,855	1,840	1,861	1,692	1,542	1,726
% CHG. MO.	2.06%	7.63%	4.90%	-0.23%	0.60%								
% CHG. YR.		4.89%	6.22%	2.20%	0.19%								
802 EAST													
US 18 EAST OF MISSION						TODD							
# of Days Monitored	31	28	31	30	31								
2026	517	588	616	647	684								610
# of Days Monitored	31	28	31	30	31	30	20	25	30	30	29	31	
2025	528	544	607	673	707	717	678	706	658	663	632	541	638
% CHG. MO.	-2.08%	8.09%	1.48%	-3.86%	-3.25%								
% CHG. YR.		3.08%	4.60%	-1.33%	-3.55%								
802 WEST													
US 18 EAST OF MISSION						TODD							
# of Days Monitored	31	28	31	30	31								
2026	524	587	602	635	664								602
# of Days Monitored	31	28	31	30	31	30	20	25	30	30	29	31	
2025	529	547	600	646	687	694	674	679	652	660	631	549	629
% CHG. MO.	-0.95%	7.31%	0.33%	-1.70%	-3.35%								
% CHG. YR.		3.25%	3.66%	-0.72%	-2.55%								

NOTE: The statistics provided throughout this report are a general overview of the monthly traffic trends from approximately 75 permanent traffic monitoring locations throughout the state. For South Dakota's official travel trend, please refer to the annual vehicle miles travel report, which includes data from the permanent traffic monitoring locations in addition to approximately 7,000 short-term count locations.

Station Direction Year	Jan	Feb	Mar	Apr	May	Jun	Jul	Aug	Sep	Oct	Nov	Dec	Annual
804 NORTH													
US 83 NORTH OF AGAR						SULLY							
# of Days Monitored	31	27	30	30	31								
2026	458	515	495	557	643								534
# of Days Monitored	31	26	30	30	31	30	31	31	30	30	30	31	
2025	460	452	517	552	586	697	637	632	617	615	552	477	566
% CHG. MO.	-0.43%	13.94%	-4.26%	0.91%	9.73%								
% CHG. YR.		6.69%	4.23%	-1.59%	5.45%								
804 SOUTH													
US 83 NORTH OF AGAR						SULLY							
# of Days Monitored	31	27	30	30	31								
2026	458	506	471	529	614								516
# of Days Monitored	31	26	30	30	31	30	31	31	30	30	30	31	
2025	461	444	486	511	559	665	621	608	606	602	555	486	550
% CHG. MO.	-0.65%	13.96%	-3.09%	3.52%	9.84%								
% CHG. YR.		6.52%	5.05%	0.30%	6.82%								
811 NORTH													
US 85 SOUTH OF BELLE FOURCHE						BUTTE							
# of Days Monitored	31	27	30	30	29								
2026	3,788	4,041	4,137	4,232	4,562								4,152
# of Days Monitored	31	28	15	30	30	30	28	26	29	30	30	31	
2025	3,550	3,710	4,106	4,259	4,486	4,916	5,120	5,090	4,670	4,410	4,085	3,870	4,356
% CHG. MO.	6.70%	8.92%	0.75%	-0.63%	1.69%								
% CHG. YR.		7.84%	4.63%	0.05%	0.56%								
811 SOUTH													
US 85 SOUTH OF BELLE FOURCHE						BUTTE							
# of Days Monitored	31	27	30	30	29								
2026	3,853	4,152	4,267	4,364	4,729								4,273
# of Days Monitored	31	28	15	30	30	30	28	26	29	30	30	31	
2025	3,596	3,786	4,131	4,276	4,653	5,052	5,277	5,344	4,798	4,591	4,278	3,999	4,482
% CHG. MO.	7.15%	9.67%	3.29%	2.06%	1.63%								
% CHG. YR.		8.44%	6.34%	2.66%	1.84%								

NOTE: The statistics provided throughout this report are a general overview of the monthly traffic trends from approximately 75 permanent traffic monitoring locations throughout the state. For South Dakota's official travel trend, please refer to the annual vehicle miles travel report, which includes data from the permanent traffic monitoring locations in addition to approximately 7,000 short-term count locations.

Station Direction Year	Jan	Feb	Mar	Apr	May	Jun	Jul	Aug	Sep	Oct	Nov	Dec	Annual
903 EAST													
US 12 WEST OF GROTON						BROWN							
# of Days Monitored	31	26	30	30	31								
2026	2,545	2,754	2,823	2,963	3,267								2,870
# of Days Monitored	31	28	29	30	29	29	28	31	28	31	30	31	
2025	2,484	2,516	2,787	2,998	3,305	3,349	3,283	3,300	3,209	3,338	2,948	2,586	3,009
% CHG. MO.	2.46%	9.46%	1.29%	-1.17%	-1.15%								
% CHG. YR.		5.98%	5.17%	0.02%	-1.16%								
903 WEST													
US 12 WEST OF GROTON						BROWN							
# of Days Monitored	31	26	30	30	31								
2026	2,537	2,737	2,808	2,928	3,263								2,855
# of Days Monitored	31	28	29	30	29	29	28	31	28	31	30	31	
2025	2,468	2,492	2,790	3,019	3,289	3,362	3,309	3,285	3,207	3,333	2,923	2,581	3,005
% CHG. MO.	2.80%	9.83%	0.65%	-3.01%	-0.79%								
% CHG. YR.		6.33%	4.98%	-1.26%	-1.85%								
909 EAST													
US 14 WEST OF MANCHESTER						KINGSBURY							
# of Days Monitored	23	26	30	30	31								
2026	663	743	754	798	875								767
# of Days Monitored	31	28	31	30	30	30	31	31	30	31	30	31	
2025	698	709	747	852	921	1,029	954	1,066	955	909	828	703	864
% CHG. MO.	-5.01%	4.80%	0.94%	-6.34%	-4.99%								
% CHG. YR.		-0.07%	2.82%	-2.94%	-5.64%								
909 WEST													
US 14 WEST OF MANCHESTER						KINGSBURY							
# of Days Monitored	23	26	30	30	31								
2026	641	742	716	789	876								753
# of Days Monitored	31	28	31	30	30	30	31	31	30	31	30	31	
2025	692	714	750	844	927	1,039	980	1,108	930	908	829	714	870
% CHG. MO.	-7.37%	3.92%	-4.53%	-6.52%	-5.50%								
% CHG. YR.		-1.64%	-0.41%	-5.58%	-5.99%								

NOTE: The statistics provided throughout this report are a general overview of the monthly traffic trends from approximately 75 permanent traffic monitoring locations throughout the state. For South Dakota's official travel trend, please refer to the annual vehicle miles travel report, which includes data from the permanent traffic monitoring locations in addition to approximately 7,000 short-term count locations.

Station Direction Year	Jan	Feb	Mar	Apr	May	Jun	Jul	Aug	Sep	Oct	Nov	Dec	Annual
922 EAST													
US 14 WEST OF JCT US14 & 83						HUGHES							
# of Days Monitored	31	28	31	30	31								
2026	1,212	1,339	1,337	1,423	1,572								1,377
# of Days Monitored	31	28	31	30	31	29	31	31	30	31	30	31	
2025	1,190	1,240	1,346	1,351	1,497	1,584	1,632	1,733	1,566	1,606	1,473	1,275	1,458
% CHG. MO.	1.85%	7.98%	-0.67%	5.33%	5.01%								
% CHG. YR.		4.98%	3.48%	2.34%	5.16%								
923 WEST													
US 14 EAST OF JCT US14 & 83						HUGHES							
# of Days Monitored	31	28	31	29	31								
2026	790	887	879	917	1,071								909
# of Days Monitored	31	28	30	30		30	31	31	30	31	30	31	
2025	781	825	893	913	*	1,122	1,144	1,254	1,101	1,128	1,037	833	1,003
% CHG. MO.	1.15%	7.52%	-1.57%	0.44%									
% CHG. YR.		4.42%	2.79%	-0.55%									
924 SOUTH													
US 83 North of Jct US14 & 83						HUGHES							
# of Days Monitored	30	28	31	30	29								
2026	692	743	747	807	901								778
# of Days Monitored	15	24	31	22	31	30	31	31	30	31	30	31	
2025	619	637	735	785	865	911	876	885	850	906	825	747	803
% CHG. MO.	11.79%	16.64%	1.63%	2.80%	4.16%								
% CHG. YR.		14.25%	8.60%	2.24%	3.52%								
Urban Collector													
602 EAST													
IN SIOUX FALLS ON 18 ST						MINNEHAHA							
# of Days Monitored	26	28		26	14								
2026	3,294	3,405	*	3,468	3,554								3,430
# of Days Monitored	31	28	31	27	30	18	29	30	16	14	23	24	
2025	3,271	3,353	3,471	3,462	3,606	3,589	3,566	3,710	3,859	3,657	3,414	3,483	3,537
% CHG. MO.	0.70%	1.55%		0.17%	-1.44%								
% CHG. YR.		1.13%			-0.65%								

NOTE: The statistics provided throughout this report are a general overview of the monthly traffic trends from approximately 75 permanent traffic monitoring locations throughout the state. For South Dakota's official travel trend, please refer to the annual vehicle miles travel report, which includes data from the permanent traffic monitoring locations in addition to approximately 7,000 short-term count locations.

Station	Direction	Year	Jan	Feb	Mar	Apr	May	Jun	Jul	Aug	Sep	Oct	Nov	Dec	Annual
602 WEST															
IN SIOUX FALLS ON 18 ST															
MINNEHAHA															
# of Days Monitored			26	28		26	14								
2026			3,672	3,687	*	4,077	3,509								3,736
# of Days Monitored			31	28	31	27	30	18	29	30	16	14	23	24	
2025			3,319	4,278	3,669	3,953	3,631	3,688	3,570	3,647	3,827	3,859	3,627	3,557	3,719
% CHG. MO.			10.64%	-13.81%		3.14%	-3.36%								
% CHG. YR.				-3.13%			0.03%								
613 EAST															
IN RAPID CITY ON ANAMOSA ST.															
PENNINGTON															
# of Days Monitored			30	27	29	28	30								
2026			3,939	4,302	4,362	4,320	4,532								4,291
# of Days Monitored			31	28	29	29	31	21	31	31	30	31	24	29	
2025			3,424	3,647	3,914	3,953	4,120	4,143	4,226	4,223	4,179	4,150	4,075	4,076	4,011
% CHG. MO.			15.04%	17.96%	11.45%	9.28%	10%								
% CHG. YR.				16.55%	14.59%	10.36%	9.65%								
613 WEST															
IN RAPID CITY ON ANAMOSA ST.															
PENNINGTON															
# of Days Monitored			30	27	29	28	30								
2026			3,923	4,321	4,396	4,292	4,496								4,286
# of Days Monitored			31	28	29	29	31	21	31	31	30	31	24	29	
2025			3,593	3,795	4,069	4,133	4,238	4,258	4,569	4,599	4,549	4,537	4,099	4,080	4,210
% CHG. MO.			9.18%	13.86%	8.04%	3.85%	6.09%								
% CHG. YR.				11.59%	10.85%	5.93%	4.98%								
614 EAST															
IN VERMILLION ON WEST CLARK ST.															
CLAY															
# of Days Monitored			31	28	28	26	31								
2026			207	231	216	239	214								221
# of Days Monitored			31	28	28	30	31	27	28	31	29	31	30	31	
2025			198	209	222	227	219	202	189	226	246	227	219	198	215
% CHG. MO.			4.55%	10.53%	-2.70%	5.29%	-2.28%								
% CHG. YR.				7.62%	3.71%	1.34%	1.57%								

NOTE: The statistics provided throughout this report are a general overview of the monthly traffic trends from approximately 75 permanent traffic monitoring locations throughout the state. For South Dakota's official travel trend, please refer to the annual vehicle miles travel report, which includes data from the permanent traffic monitoring locations in addition to approximately 7,000 short-term count locations.

Station Direction Year	Jan	Feb	Mar	Apr	May	Jun	Jul	Aug	Sep	Oct	Nov	Dec	Annual
614 WEST													
IN VERMILLION ON WEST CLARK ST.						CLAY							
# of Days Monitored	31	28	28	26	31								
2026	199	213	203	224	210								210
# of Days Monitored	31	28	28	30	31	27	28	31	29	31	30	31	
2025	190	199	206	225	221	216	222	244	248	211	202	188	214
% CHG. MO.	4.74%	7.04%	-1.46%	-0.44%	-4.98%								
% CHG. YR.		5.91%	2.72%	-0.93%	-2.69%								
Urban Minor Arterial													
619 EAST													
IN SIOUX FALLS ON 26TH ST.						MINNEHAHA							
# of Days Monitored	31	28	31	30	31								
2026	5,287	5,405	5,527	5,906	6,026								5,630
# of Days Monitored	30	27	28	29	30	22	31	31	30	31	29	31	
2025	5,083	5,243	5,509	6,008	6,257	6,207	5,641	5,731	5,839	5,941	5,434	5,035	5,661
% CHG. MO.	4.01%	3.09%	0.33%	-1.70%	-3.69%								
% CHG. YR.		3.54%	1.67%	-0.73%	-2.72%								
619 WEST													
IN SIOUX FALLS ON 26TH ST.						MINNEHAHA							
# of Days Monitored	31	28	31	30	31								
2026	6,098	6,210	6,369	6,915	7,125								6,543
# of Days Monitored	30	27	28	29	30	22	31	31	30	31	29	31	
2025	5,962	6,124	6,498	7,197	7,603	7,481	6,738	6,714	6,869	6,795	6,204	5,818	6,667
% CHG. MO.	2.28%	1.40%	-1.99%	-3.92%	-6.29%								
% CHG. YR.		1.84%	-0.34%	-3%	-5.14%								
Urban Other Principal Arterials													
603 EAST													
US 14 MISSOURI RIVER BRIDGE IN PIERRE						HUGHES							
# of Days Monitored	30	28	27	30	30								
2026	6,475	7,188	7,065	7,276	7,765								7,154
# of Days Monitored													
2025	*	*	*	*	*	*	*	*	*	*	*	*	*
% CHG. MO.													
% CHG. YR.													

NOTE: The statistics provided throughout this report are a general overview of the monthly traffic trends from approximately 75 permanent traffic monitoring locations throughout the state. For South Dakota's official travel trend, please refer to the annual vehicle miles travel report, which includes data from the permanent traffic monitoring locations in addition to approximately 7,000 short-term count locations.

Station Direction Year	Jan	Feb	Mar	Apr	May	Jun	Jul	Aug	Sep	Oct	Nov	Dec	Annual
603 WEST													
US 14 MISSOURI RIVER BRIDGE IN PIERRE						HUGHES							
# of Days Monitored	30	28	27	30	30								
2026	6,490	7,184	7,053	7,256	7,752								7,147
# of Days Monitored													
2025	*	*	*	*	*	*	*	*	*	*	*	*	*
% CHG. MO.													
% CHG. YR.													
604 NORTH													
US 281 SOUTH OF US12 IN ABERDEEN						BROWN							
# of Days Monitored	31	28	27	29	30								
2026	1,918	2,001	2,142	2,259	2,444								2,153
# of Days Monitored	30	27	29	30	31	30	31	15	30	29	28	30	
2025	1,861	1,937	2,120	2,218	2,384	2,466	2,372	2,374	2,417	2,358	2,215	1,995	2,226
% CHG. MO.	3.06%	3.30%	1.04%	1.85%	2.52%								
% CHG. YR.		3.19%	2.12%	1.45%	2.19%								
604 SOUTH													
US 281 SOUTH OF US12 IN ABERDEEN						BROWN							
# of Days Monitored	31	28	27	29	30								
2026	1,948	2,045	2,185	2,281	2,458								2,183
# of Days Monitored	30	27	29	30	31	30	31	14	30	28	28	30	
2025	1,905	1,961	2,151	2,256	2,431	2,520	2,417	2,515	2,455	2,492	2,289	2,036	2,286
% CHG. MO.	2.26%	4.28%	1.58%	1.11%	1.11%								
% CHG. YR.		3.29%	2.87%	1.34%	1.11%								
605 EAST													
SD IN SIOUX FALLS ON 10TH ST.						MINNEHAHA							
# of Days Monitored	31	28	28	30	31								
2026	9,898	10,647	11,032	11,339	11,247								10,833
# of Days Monitored	31	27	27	30	31	30	31	31	29	28	30	30	
2025	10,170	10,319	10,921	10,900	11,257	10,999	10,396	10,372	10,127	10,199	10,352	9,919	10,494
% CHG. MO.	-2.67%	3.18%	1.02%	4.03%	-0.09%								
% CHG. YR.		0.27%	2.07%	2.52%	1.94%								

NOTE: The statistics provided throughout this report are a general overview of the monthly traffic trends from approximately 75 permanent traffic monitoring locations throughout the state. For South Dakota's official travel trend, please refer to the annual vehicle miles travel report, which includes data from the permanent traffic monitoring locations in addition to approximately 7,000 short-term count locations.

Station Direction Year	Jan	Feb	Mar	Apr	May	Jun	Jul	Aug	Sep	Oct	Nov	Dec	Annual
605 WEST													
SD IN SIOUX FALLS ON 10TH ST.						MINNEHAHA							
# of Days Monitored	31	28	28	30	31								
2026	10,300	10,754	10,944	10,727	10,541								10,653
# of Days Monitored	31	27	27	30	31	30	31	31	29	28	30	30	
2025	9,838	10,071	10,554	10,094	10,422	10,641	11,334	11,520	10,806	10,824	9,888	10,647	10,553
% CHG. MO.	4.70%	6.78%	3.70%	6.27%	1.14%								
% CHG. YR.		5.75%	5.20%	4.95%	3.67%								
812 NORTH													
SD 79 South of Rapid City						PENNINGTON							
# of Days Monitored	31	28	30	30	31								
2026	4,083	4,429	4,571	4,713	5,325								4,624
# of Days Monitored	31	28	31	30	31	30	31	30	30	31	29	31	
2025	3,836	3,990	4,416	4,800	5,472	6,250	6,358	6,457	5,795	5,116	4,518	4,318	5,110
% CHG. MO.	6.44%	11%	3.51%	-1.81%	-2.69%								
% CHG. YR.		8.77%	7.07%	0.74%	-2.28%								
812 SOUTH													
SD 79 South of Rapid City						PENNINGTON							
# of Days Monitored	31	28	30	30	31								
2026	4,129	4,507	4,615	4,723	5,403								4,675
# of Days Monitored	31	28	31	30	31	30	31	30	30	31	29	31	
2025	3,864	4,046	4,452	4,817	5,553	6,321	6,384	6,540	5,880	5,203	4,590	4,378	5,169
% CHG. MO.	6.86%	11.39%	3.66%	-1.95%	-2.70%								
% CHG. YR.		9.18%	7.34%	0.74%	-2.35%								
Urban Principal Arterial Interstate													
193 EAST													
I 90 EAST OF SPEARFISH						LAWRENCE							
# of Days Monitored	13	23	29	28	26								
2026	7,097	7,513	7,745	8,066	9,999								8,084
# of Days Monitored	30	26	28	29	31	27	30	27	27	23	17	29	
2025	6,216	6,520	7,324	8,525	9,548	10,983	11,318	11,791	10,682	10,098	7,076	7,289	8,948
% CHG. MO.	14.17%	15.23%	5.75%	-5.38%	4.72%								
% CHG. YR.		14.71%	10.21%	-0.24%	-0.04%								

NOTE: The statistics provided throughout this report are a general overview of the monthly traffic trends from approximately 75 permanent traffic monitoring locations throughout the state. For South Dakota's official travel trend, please refer to the annual vehicle miles travel report, which includes data from the permanent traffic monitoring locations in addition to approximately 7,000 short-term count locations.

Station Direction Year	Jan	Feb	Mar	Apr	May	Jun	Jul	Aug	Sep	Oct	Nov	Dec	Annual
193 WEST													
I 90 EAST OF SPEARFISH						LAWRENCE							
# of Days Monitored	13	23	29	28	26								
2026	7,202	7,611	7,738	8,094	10,240								8,177
# of Days Monitored	30	26	28	29	31	27	29	27	27	23	17	29	
2025	6,324	6,589	7,387	8,645	9,781	11,244	11,691	12,129	10,853	10,194	7,102	7,300	9,103
% CHG. MO.	13.88%	15.51%	4.75%	-6.37%	4.69%								
% CHG. YR.		14.71%	9.82%	-1.25%	-0.50%								
610 NORTH													
I 229 IN SIOUX FALLS						MINNEHAHA							
# of Days Monitored	31	28	29	30	25								
2026	19,279	19,574	19,496	21,780	21,014								20,229
# of Days Monitored	31	28	29	30	31	30	31	31	30	31	29	31	
2025	19,238	19,753	19,996	21,613	21,482	20,433	20,170	18,484	17,263	19,370	19,730	19,081	19,718
% CHG. MO.	0.21%	-0.91%	-2.50%	0.77%	-2.18%								
% CHG. YR.		-0.35%	-1.71%	-0.80%	-0.70%								
610 SOUTH													
I 229 IN SIOUX FALLS						MINNEHAHA							
# of Days Monitored	31	28	29	30	25								
2026	23,381	24,743	25,050	26,784	27,159								25,423
# of Days Monitored	31	28	29	30	31	30	31	31	30	31	29	31	
2025	23,163	24,651	25,267	26,504	27,004	26,969	26,739	26,433	26,001	26,183	25,088	22,932	25,578
% CHG. MO.	0.94%	0.37%	-0.86%	1.06%	0.57%								
% CHG. YR.		0.65%	-0.25%	0.12%	0.81%								
611 EAST													
I 90 EAST OF I 190 IN RAPID CITY						PENNINGTON							
# of Days Monitored	31	28	30	28	31								
2026	16,866	18,452	18,527	18,969	20,375								18,638
# of Days Monitored	30	28	29	30	30	30	22	30	27	30	28	31	
2025	15,814	16,627	19,265	19,061	20,208	21,585	21,400	21,883	20,411	20,142	18,534	17,672	19,384
% CHG. MO.	6.65%	10.98%	-3.83%	-0.48%	0.83%								
% CHG. YR.		8.87%	3.03%	-2.17%	0.19%								

NOTE: The statistics provided throughout this report are a general overview of the monthly traffic trends from approximately 75 permanent traffic monitoring locations throughout the state. For South Dakota's official travel trend, please refer to the annual vehicle miles travel report, which includes data from the permanent traffic monitoring locations in addition to approximately 7,000 short-term count locations.

Station Direction Year	Jan	Feb	Mar	Apr	May	Jun	Jul	Aug	Sep	Oct	Nov	Dec	Annual
611 WEST													
I 90 EAST OF I 190 IN RAPID CITY						PENNINGTON							
# of Days Monitored	31	28	30	28	31								
2026	17,916	19,533	19,980	20,293	21,759								19,896
# of Days Monitored	30	28	29	30	30	30	22	30	27	30	28	31	
2025	16,720	17,850	19,596	19,809	21,068	22,702	23,030	22,632	21,483	21,559	19,657	18,920	20,419
% CHG. MO.	7.15%	9.43%	1.96%	2.44%	3.28%								
% CHG. YR.		8.33%	5.52%	2.20%	2.87%								
620 NORTH													
I 190 IN RAPID CITY						PENNINGTON							
# of Days Monitored	31	28	30	30	31								
2026	9,599	10,544	10,614	10,645	11,276								10,536
# of Days Monitored									15	21	27	31	
2025	*	*	*	*	*	*	*	*	10,093	11,021	10,056	9,973	10,286
% CHG. MO.													
% CHG. YR.													
620 SOUTH													
I 190 IN RAPID CITY						PENNINGTON							
# of Days Monitored	31	28	30	30	31								
2026	9,260	10,175	10,188	10,296	11,029								10,190
# of Days Monitored									15	21	27	31	
2025	*	*	*	*	*	*	*	*	12,100	10,495	9,672	9,541	10,452
% CHG. MO.													
% CHG. YR.													

NOTE: The statistics provided throughout this report are a general overview of the monthly traffic trends from approximately 75 permanent traffic monitoring locations throughout the state. For South Dakota's official travel trend, please refer to the annual vehicle miles travel report, which includes data from the permanent traffic monitoring locations in addition to approximately 7,000 short-term count locations.