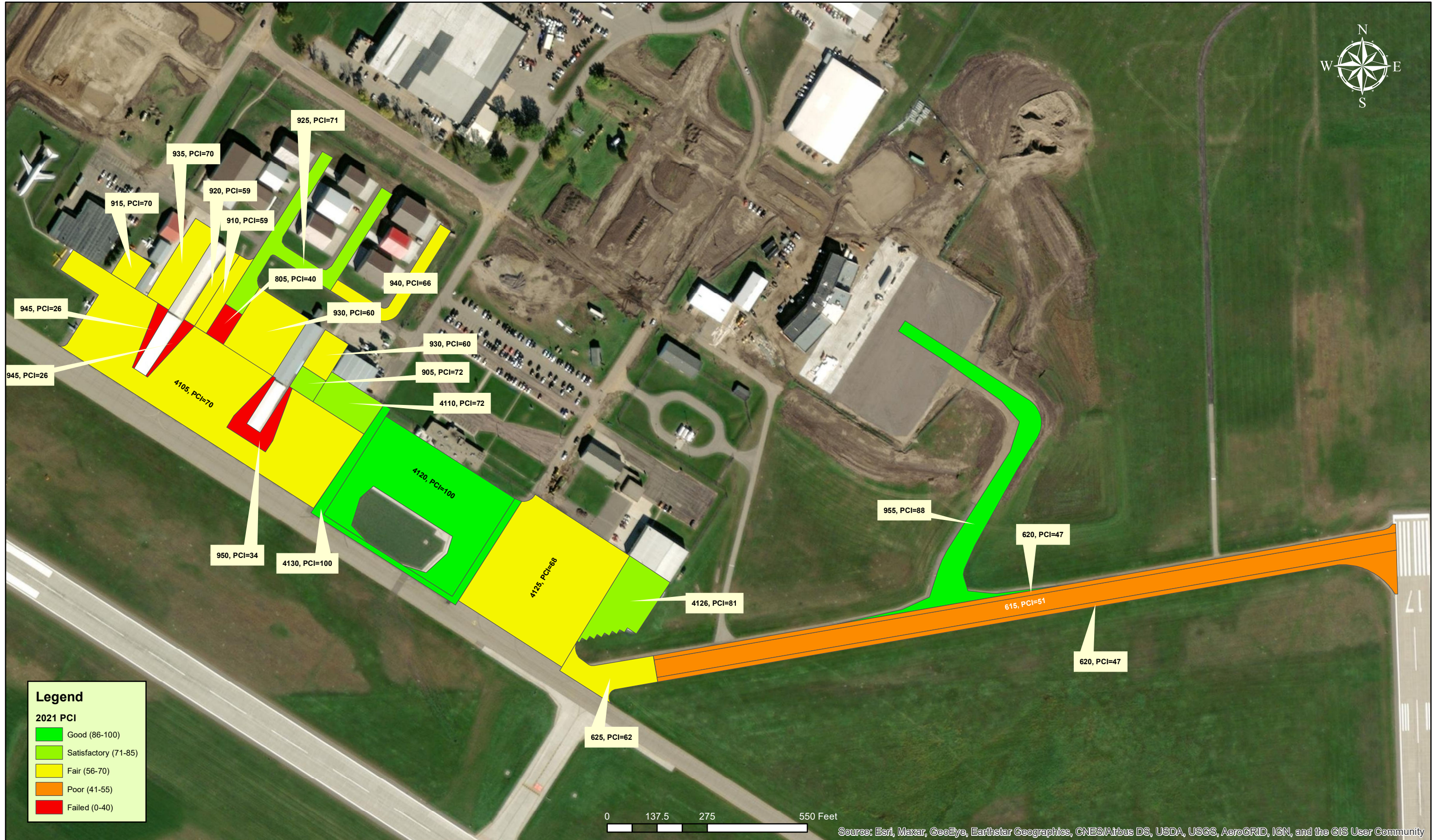


# Watertown Regional Airport (ATY)

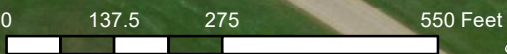
2021 Pavement Condition Index (PCI) Study



**Legend**

**2021 PCI**

- Good (86-100)
- Satisfactory (71-85)
- Fair (56-70)
- Poor (41-55)
- Failed (0-40)



Source: Esri, Maxar, GeoEye, Earthstar Geographics, CNES/Airbus DS, USDA, USGS, AeroGRID, IGN, and the GIS User Community