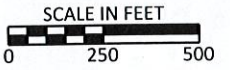


Year 2 Phase 1 Detour Closure of Lewis Avenue and Potsdam Avenue South of Benson Road

STATE OF SOUTH DAKOTA	PROJECT	SHEET	TOTAL SHEETS
	IM 2292(98)9 P 1200(04) IM 2292(112)6	C63	C102

FILE: ...Year 2 - Detours - Lewis South.dgn
PLOTTING DATE: 07-27-2022

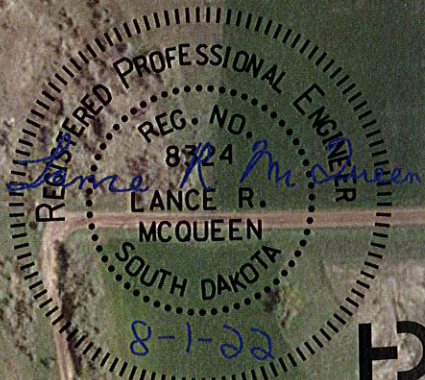
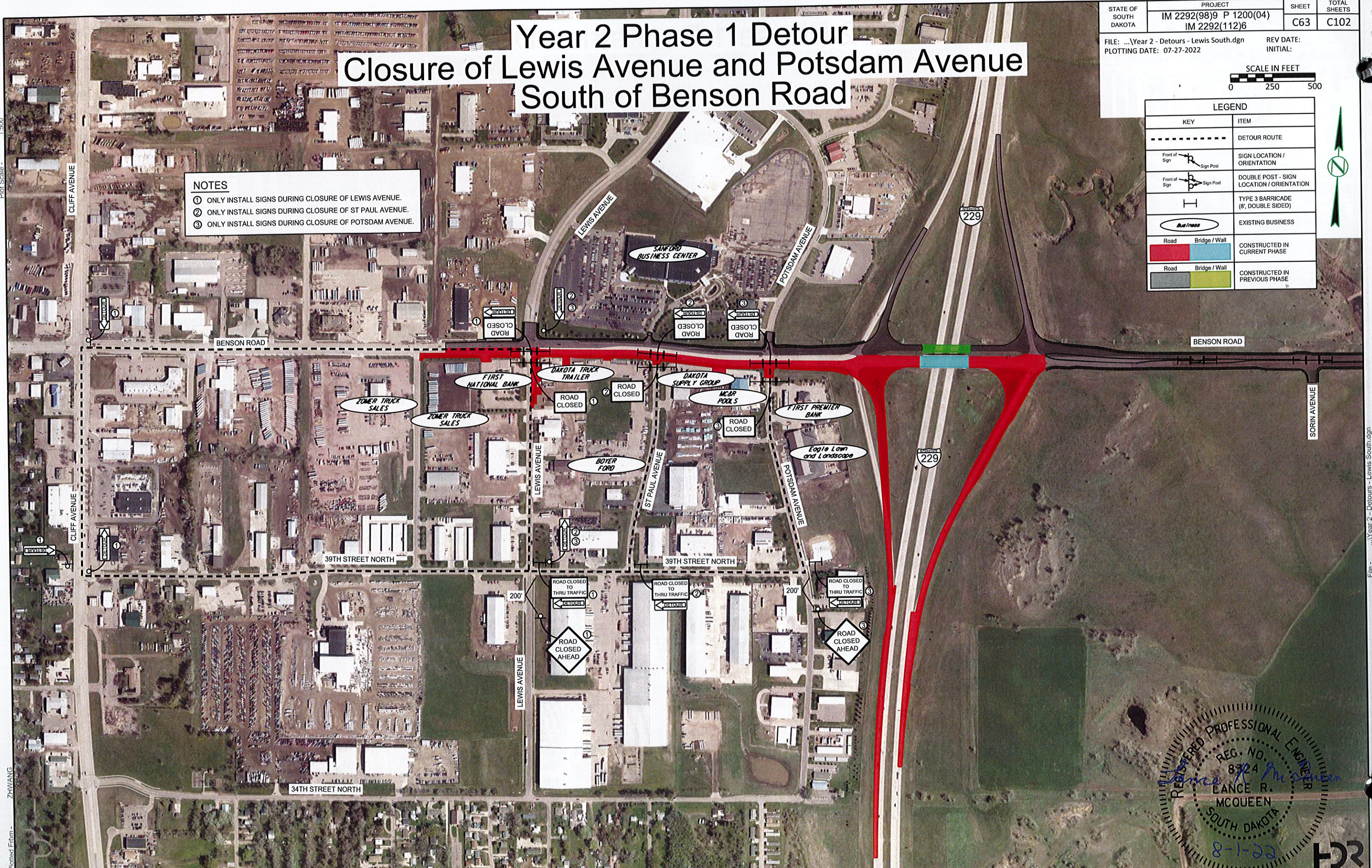
REV DATE: INITIAL:



LEGEND	
KEY	ITEM
-----	DETOUR ROUTE
Front of Sign Sign Post	SIGN LOCATION / ORIENTATION
Front of Sign Sign Post	DOUBLE POST - SIGN LOCATION / ORIENTATION
I	TYPE 3 BARRICADE (8', DOUBLE SIDED)
Bus/Truck	EXISTING BUSINESS
Road Bridge / Wall	CONSTRUCTED IN CURRENT PHASE
Road Bridge / Wall	CONSTRUCTED IN PREVIOUS PHASE

NOTES

- ONLY INSTALL SIGNS DURING CLOSURE OF LEWIS AVENUE.
- ONLY INSTALL SIGNS DURING CLOSURE OF ST PAUL AVENUE.
- ONLY INSTALL SIGNS DURING CLOSURE OF POTSDAM AVENUE.



Plot Scale - 1:500

Plotted From - ZHWANG

File: ...Year 2 - Detours - Lewis South.dgn

