



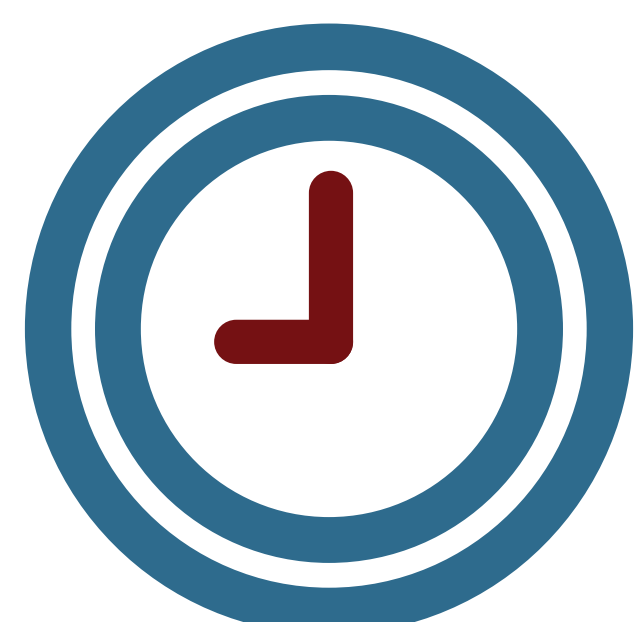
# WELCOME!

**We are pleased you are here to learn more about and provide feedback on the SDDOT Old U.S. Highway 14 and Interstate 90 (Exit 10) Traffic Study.**

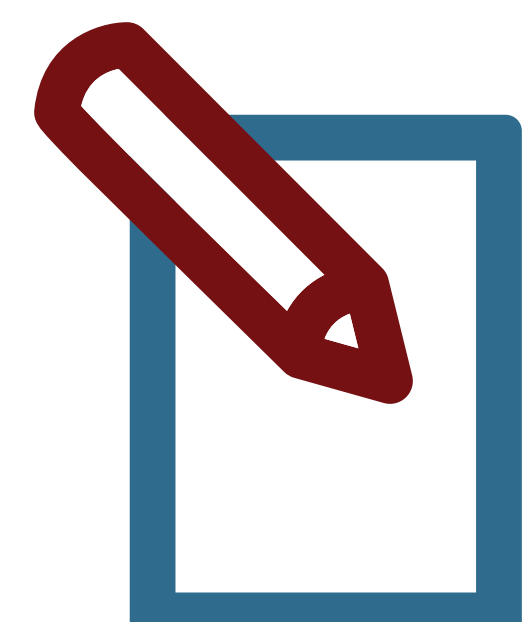
## **How to Get the Most Out of This Meeting:**



Review each display and talk with project team members to learn more and share your ideas.



Spend as much or as little time with us as you like.



Complete a comment form and drop it in the box.

# Project Overview

The purpose of the Old U.S. Highway 14 and Interstate 90 (Exit 10) Traffic Study is to evaluate current and future conditions of the study area, focusing on safety and traffic improvements at North Avenue's intersections with Old U.S. Highway 14 and Interstate 90 (Exit 10), where recurring crashes and operational issues have been identified.

The study anticipates future traffic growth and aims to find solutions that maintain acceptable traffic conditions through year 2038.

A final report, including the improvement recommendations, is anticipated to be completed in December 2024.

## Study Area



## Identified Needs

Needs were identified from technical evaluations and historical traffic volumes, with considerations for anticipated increased traffic growth.

**Immediate priorities include improvements at the intersections of:**

- North Avenue & Old U.S. Highway 14
- North Avenue & Interstate 90 (Exit 10) Eastbound Ramp

# Alternative 0

## No-Build

### Overview:

Maintains the current layout at North Avenue/Old U.S. Highway 14 and North Avenue/I-90 Exit 10 Eastbound Ramp with no changes.

### Considerations

<b>Traffic Operations</b> Motorist Delay/Travel Time	2024: ★☆☆☆☆ 2038: ★☆☆☆☆
<b>Safety</b> Conflicts/Severe & Fatal Crashes	★☆☆☆☆
<b>Cost</b> Design, Construction, ROW, Utilities	★★★★★ \$0



# Alternative 1

## Left-In, Right-Out (LIRO)

### Overview

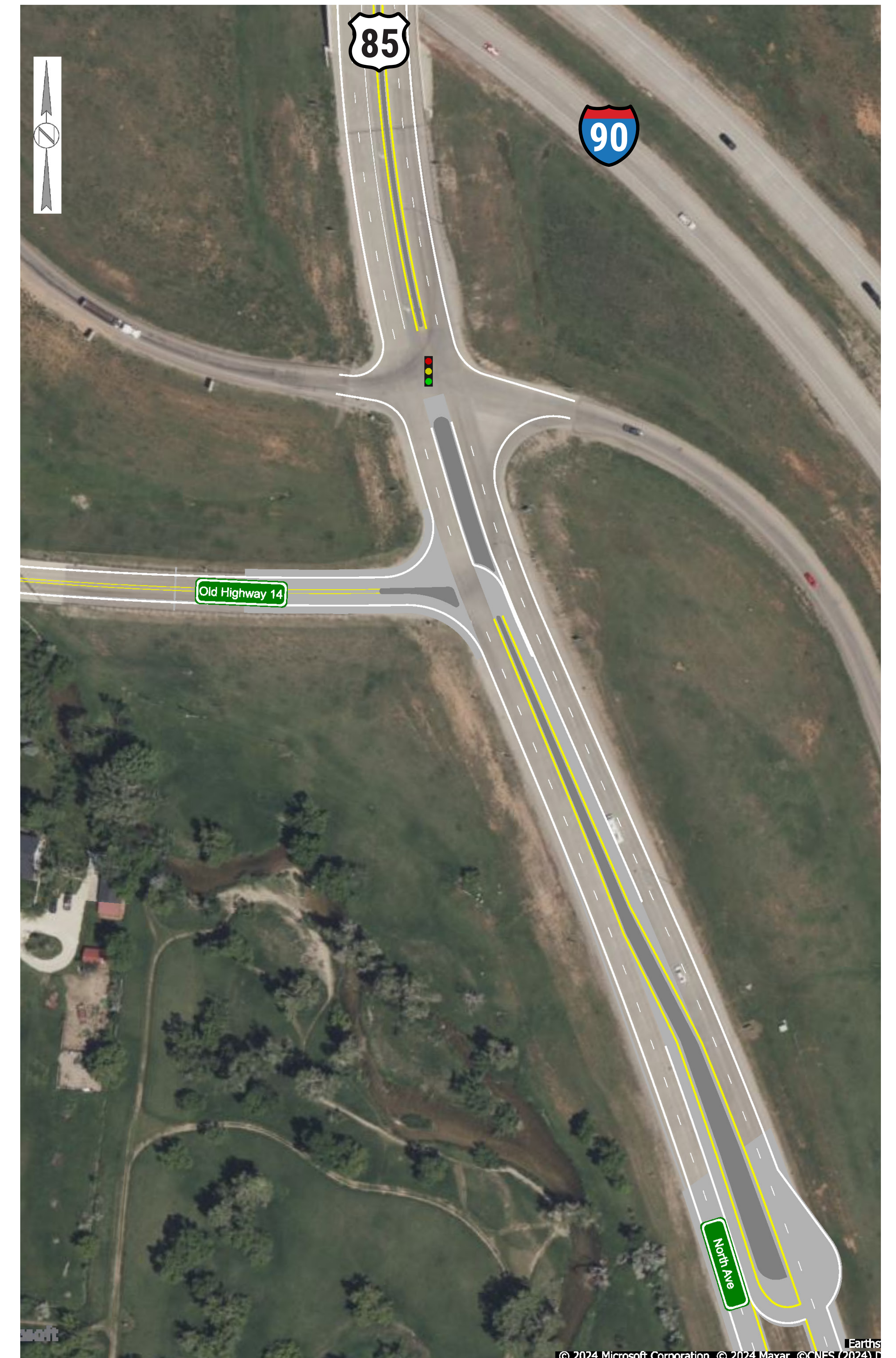
This alternative would restrict left-turn movements from Old Hwy 14 onto northbound North Avenue. Instead, motorists would turn right and use a dedicated u-turn location south of the intersection to perform this U-turn.

### Considerations

<b>Traffic Operations</b> Motorist Delay/Travel Time	2024: ★★★★★ 2038: ★★★★★
<b>Safety</b> Conflicts/Severe & Fatal Crashes	★★★★★
<b>Cost</b> Design, Construction, ROW, Utilities (with signal at Exit 10 EB)	★★☆☆☆ \$1,630,000

### Other

- Increased travel times due to out-of-direction travel.
- Signal at Exit 10 EB ramps to be installed when warranted.



# Alternative 2

## Traffic Signalization

### Overview

Maintains current layout but adds a traffic signal at the intersection of North Avenue and Old U.S. Highway 14. A traffic signal would be added at the Exit 10 EB ramps intersection when traffic volumes satisfy warrant criteria.

### Considerations

<b>Traffic Operations</b> Motorist Delay/Travel Time	2024: ★★★★★ 2038: ★★★★★
<b>Safety</b> Conflicts/Severe & Fatal Crashes	★★★★☆
<b>Cost</b> Design, Construction, ROW, Utilities (with signals at both intersections)	★★★★☆ \$980,000

### Other

- Signal at Exit 10 EB ramps to be installed when warranted.
- Closely-spaced traffic signals can cause delays and inefficient flow.
- Traffic signals incur additional operations and maintenance costs.

