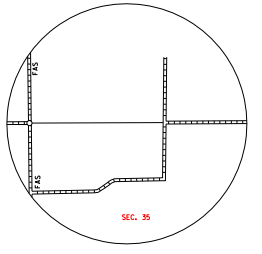
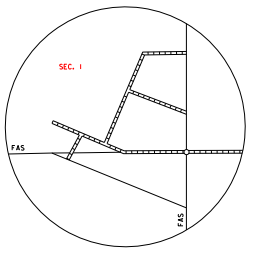


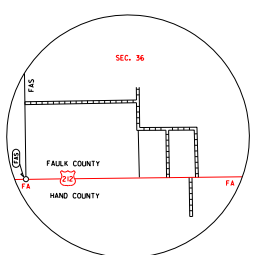
NORBECK
SEC. 25 - T 120 N - R 70 W
SCALE IN MILES



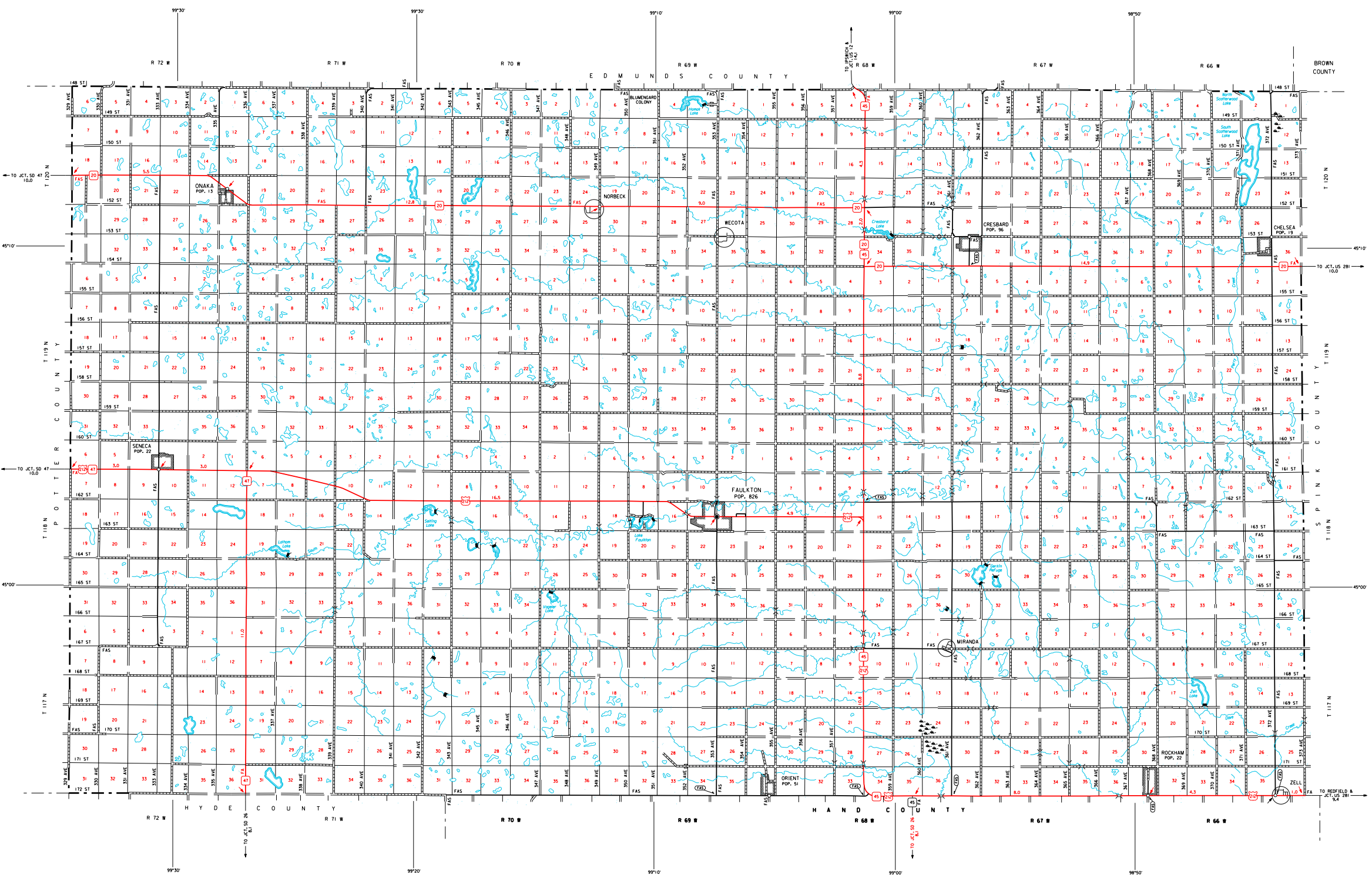
WECOTA
SEC. 35 - T 120 N - R 69 W
SCALE IN MILES



MIRANDA
SEC. 1 - T 117 N - R 68 W
SCALE IN MILES

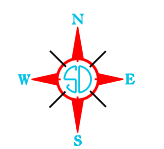


ZELL
SEC. 36 - T 117 N - R 66 W
SCALE IN MILES



LEGEND

INTERSTATE HIGHWAY (FULL CONTROL OF ACCESS)	ROAD BRIDGE (OVER 20 FT. IN LENGTH)
STATE NUMBERED HIGHWAY	DRAINAGE DITCH (MAIN)
FEDERAL AID HIGHWAY SYSTEM	IRIGATION DITCH
FEDERAL AID SECONDARY HIGHWAY SYSTEM	RESERVOIR, POND OR LAKE
END OF FEDERAL AID DESIGNATED ROUTE	RESERVOIR, WITH DAM
PRIMITIVE ROAD	DAM
UNIMPROVED ROAD	WASH OR SWAMP LAND
GRADED OR DRAINED ROAD	DOCK, PIER, OR LANDING
GRAVEL OR STONE SURFACED ROAD	HIGHWAY BRIDGE (CLOSELY SPACED)
HARD SURFACED ROAD	STEEL TRUSS BRIDGE (LARGE)
DIVIDED HIGHWAY (LEFT DRIVEWAY SIDE)	CANTILEVER BRIDGE
INTERCHANGE	FORD - ROAD ESTABLISHED
ROADWAY GRADE SEPARATION	CONCRETE FORD
POINTS BETWEEN BRIDGE STRUCTURES	CAUSEWAY
RAILROAD	CATTLE GUARD
RAILROAD IN JUNCTION	PROMINENT ELEVATION
RAILROAD IN JUNCTION OF SEPARATELY OPERATED COMPANIES ON ADJACENT RIGHT-OF-WAY	STATE LINE
RAILROAD CROSSINGS	COUNTY LINE
GRADE CROSSINGS	CONGRESSIONAL TOWNSHIP LINE
RAILROAD ABOVE	SECTION LINE
RAILROAD BELOW	FEDERAL AND STATE RECREATION ROADWAY LINE
APPOINT WITH SURFACED RUNWAYS	MONUMENT (SMALL)
MILITARY FIELD	COUNTY SEAT
ARROYO, COMPLETE FACILITIES	UNINCORPORATED VILLAGE OR AREA OF CONGESTED CULTURE
ARROYO, LIMITED FACILITIES	INCORPORATED CITY OR VILLAGE
LANDING AREA OR STRIP INCLUDING PRIVATE AIR FIELDS	(FIGURES INDICATED 1990 POPULATION)
ARMY LIGHT BEACON (GENERAL)	



GENERAL HIGHWAY MAP FAULK COUNTY SOUTH DAKOTA

prepared by the
SOUTH DAKOTA DEPARTMENT OF TRANSPORTATION
in cooperation with the
U.S. DEPARTMENT OF TRANSPORTATION
FEDERAL HIGHWAY ADMINISTRATION

SCALE
0 2 4 5 MILES

2021



UNIVERSAL TRANSVERSE MERCATOR PROJECTION

RESTRICTION OF LIABILITY: The South Dakota Department of Transportation makes no claim, promise or guarantee about the accuracy, completeness or timeliness of the data and information contained in this map. The user assumes the responsibility for any and all uses of the data and information contained in this map. The user agrees to hold the South Dakota Department of Transportation harmless from any and all claims, damages, losses, or expenses of any kind, including reasonable attorneys' fees, arising from the use of this map. The user agrees to hold the South Dakota Department of Transportation harmless from any and all claims, damages, losses, or expenses of any kind, including reasonable attorneys' fees, arising from the use of this map. The user agrees to hold the South Dakota Department of Transportation harmless from any and all claims, damages, losses, or expenses of any kind, including reasonable attorneys' fees, arising from the use of this map.

COPIES OF THIS MAP ARE AVAILABLE FOR PUBLIC USE AT A NOMINAL COST
S.D. Department of Transportation
Map Sale - Ph: (605) 773 5249
P.O. Box 10000, Pierre, South Dakota 57502