

BRYANT MASTER TRANSPORTATION PLAN



Overview of the Planning Process

June 24th, 2025

AGENDA

INTRODUCTION TO
THE
TRANSPORTATION
STUDY

OVERVIEW OF
THE PLANNING
PROCESS

INFORMATION
ON PUBLIC
ENGAGEMENT

INVENTORY OF
EXISTING
CONDITIONS

The Transportation Study

Provides a blueprint guided by local input

Considers multimodal facilities

- Roadways
- Sidewalks and Trails
- Transit

Identifies present and future issues and needs

- Inventory of existing transportation infrastructure
- Issue identification
- Public input

Prepares a list of transportation improvement priorities

- Safety
- Mobility
- Future needs

Identifies funding needs and capabilities

- Provides alternatives to identified issues and specific points of interest

Scope of Study

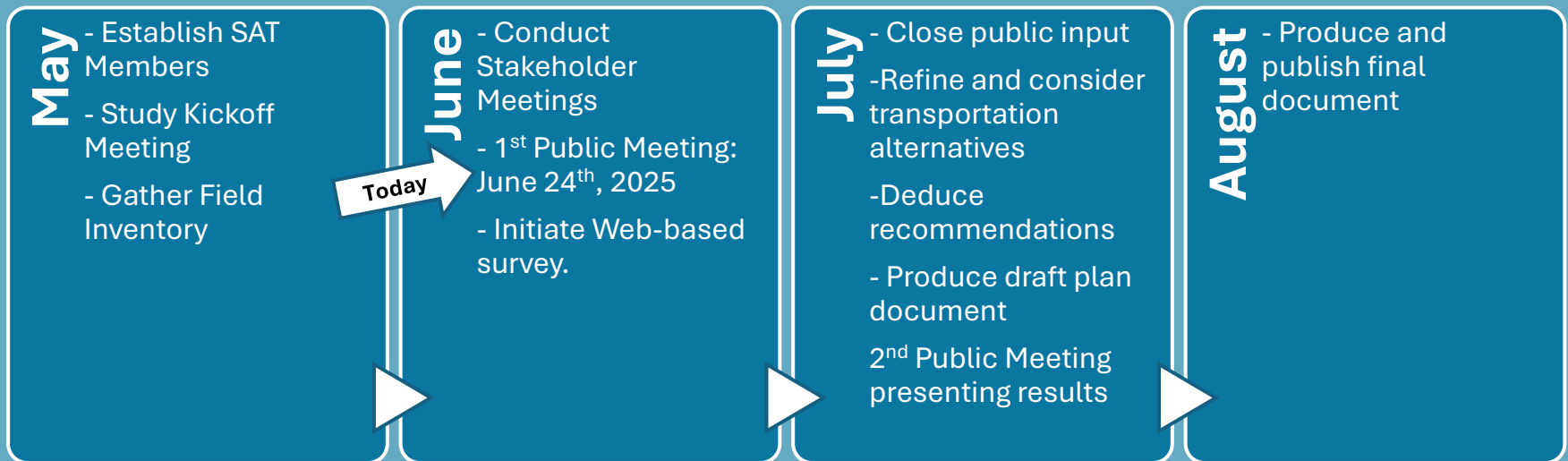
Covered in Plan

- Inventory of current conditions
- List of transportation needs
- Prioritized plans of improvements to the transportation system
- Draft city ordinances
- Cost Estimates
- Possible funding options

Not Covered in Plan

- Design/layout of future expansion
- Detailed design of improvements
- Construction documents or specifics
- Enforcement issues
- Environmental review.

Schedule



Public Involvement

Public Meetings

Two public meetings announced in the newspaper. These are, meetings where the public is encouraged to contribute and voice their concerns

Internet

Project Website

- Linked through:

<https://dot.sd.gov/bryant-mtp>

Survey

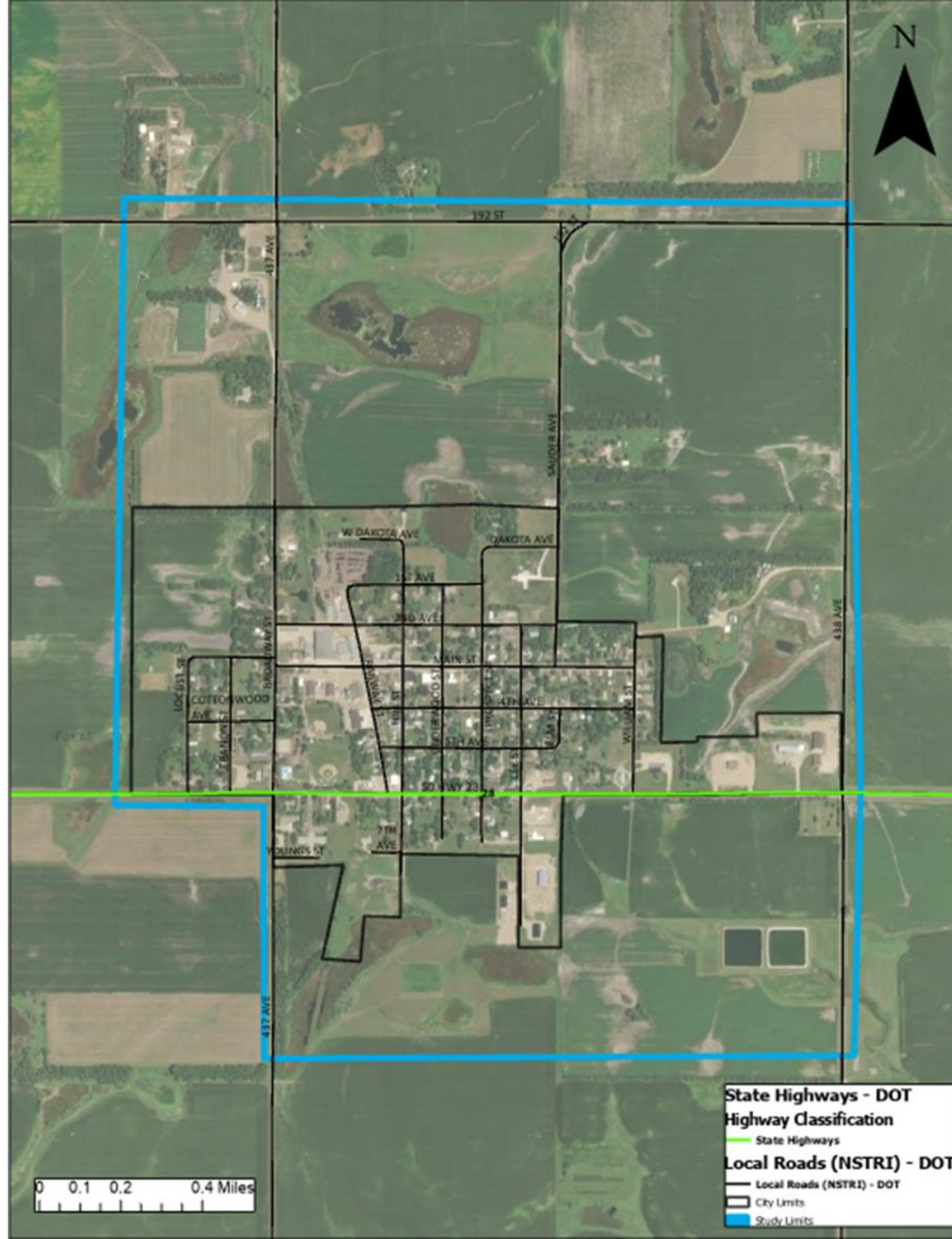
- Linked through project website

<https://www.surveymonkey.com/r/GSTFQDR>

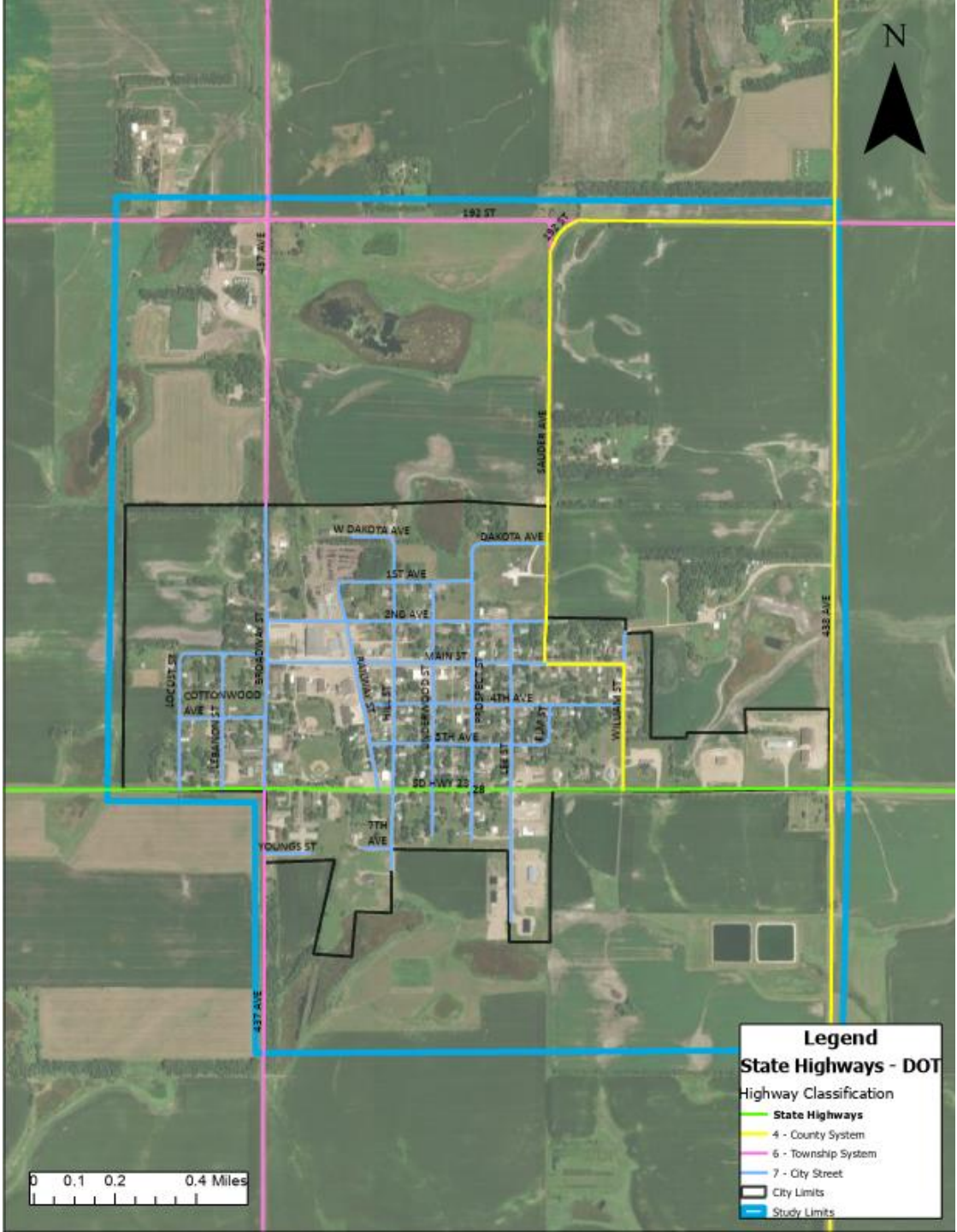
Inventory of Existing Conditions



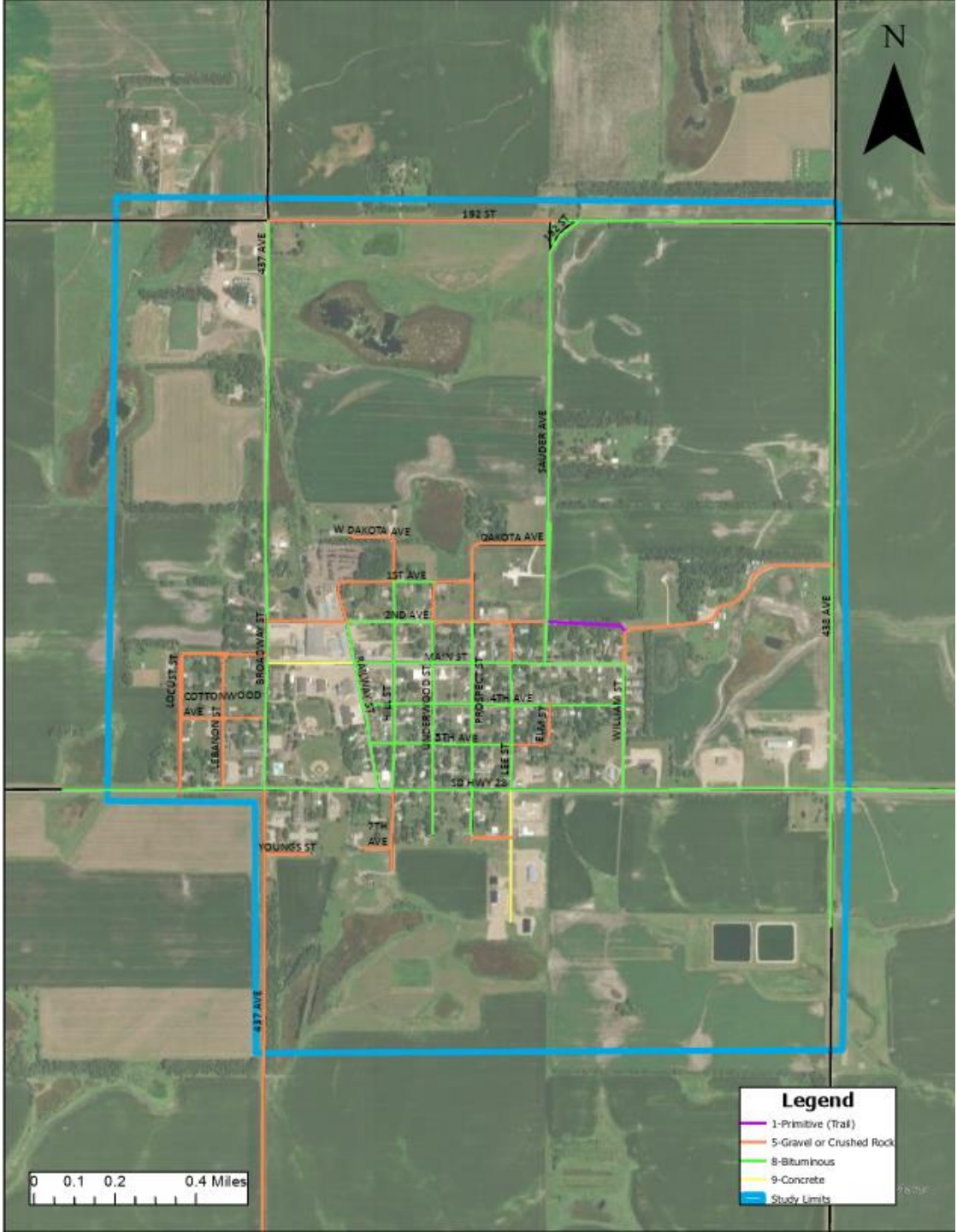
Study Area Map:



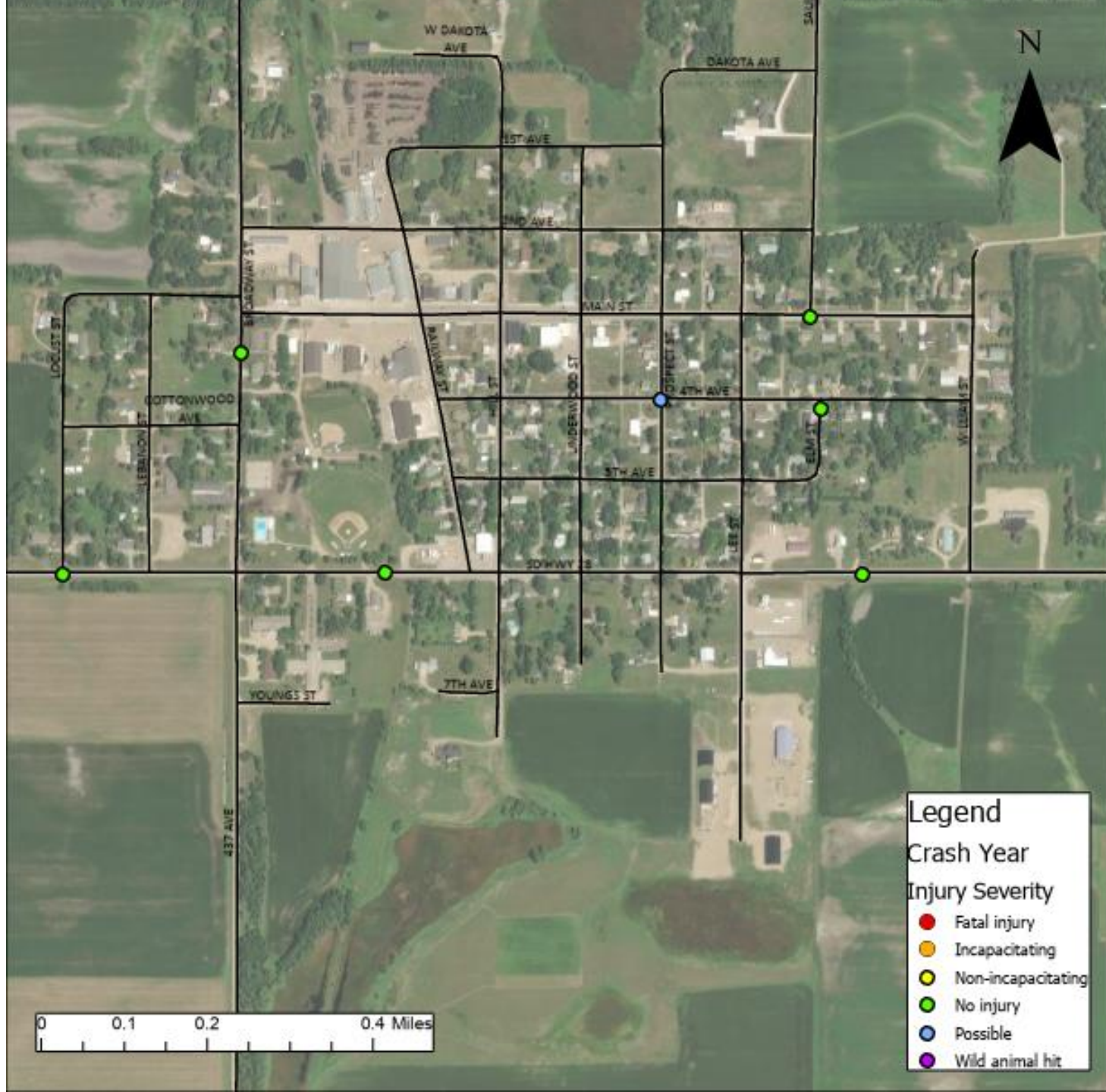
Road
Jurisdiction
Map:



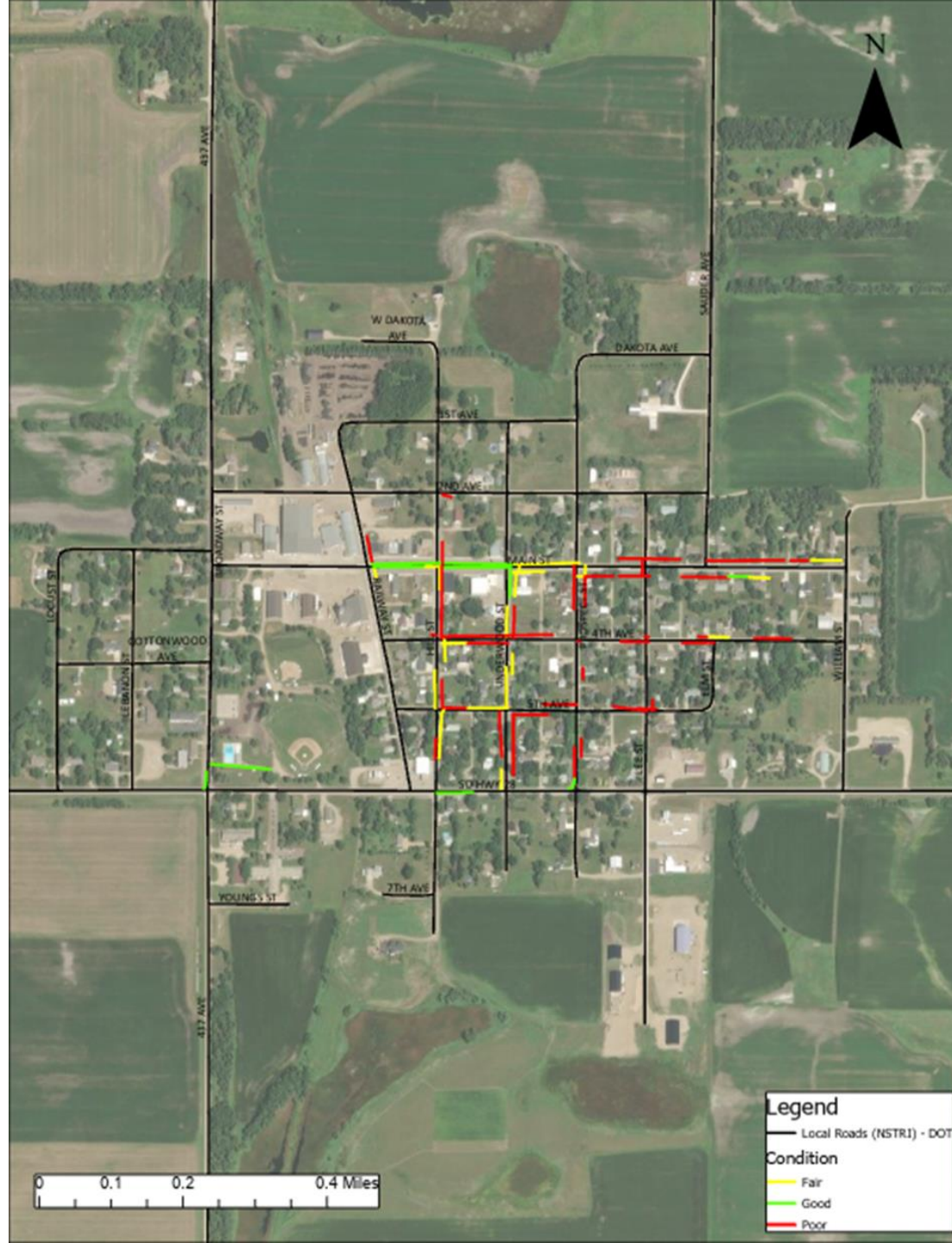
Road
Surface
Type Map:



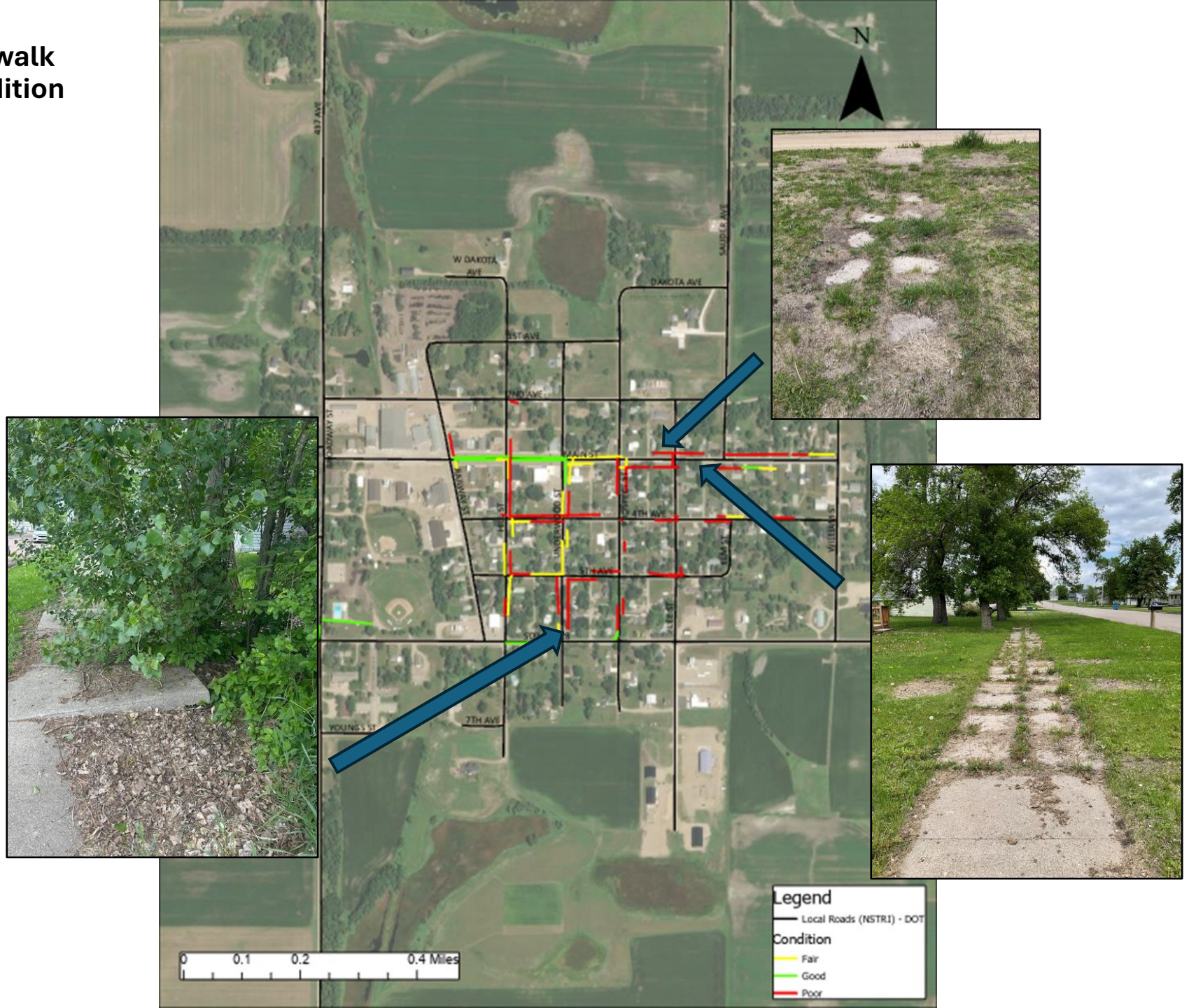
**Crash
Location
and
Severity
Map
(2020-
2025):**



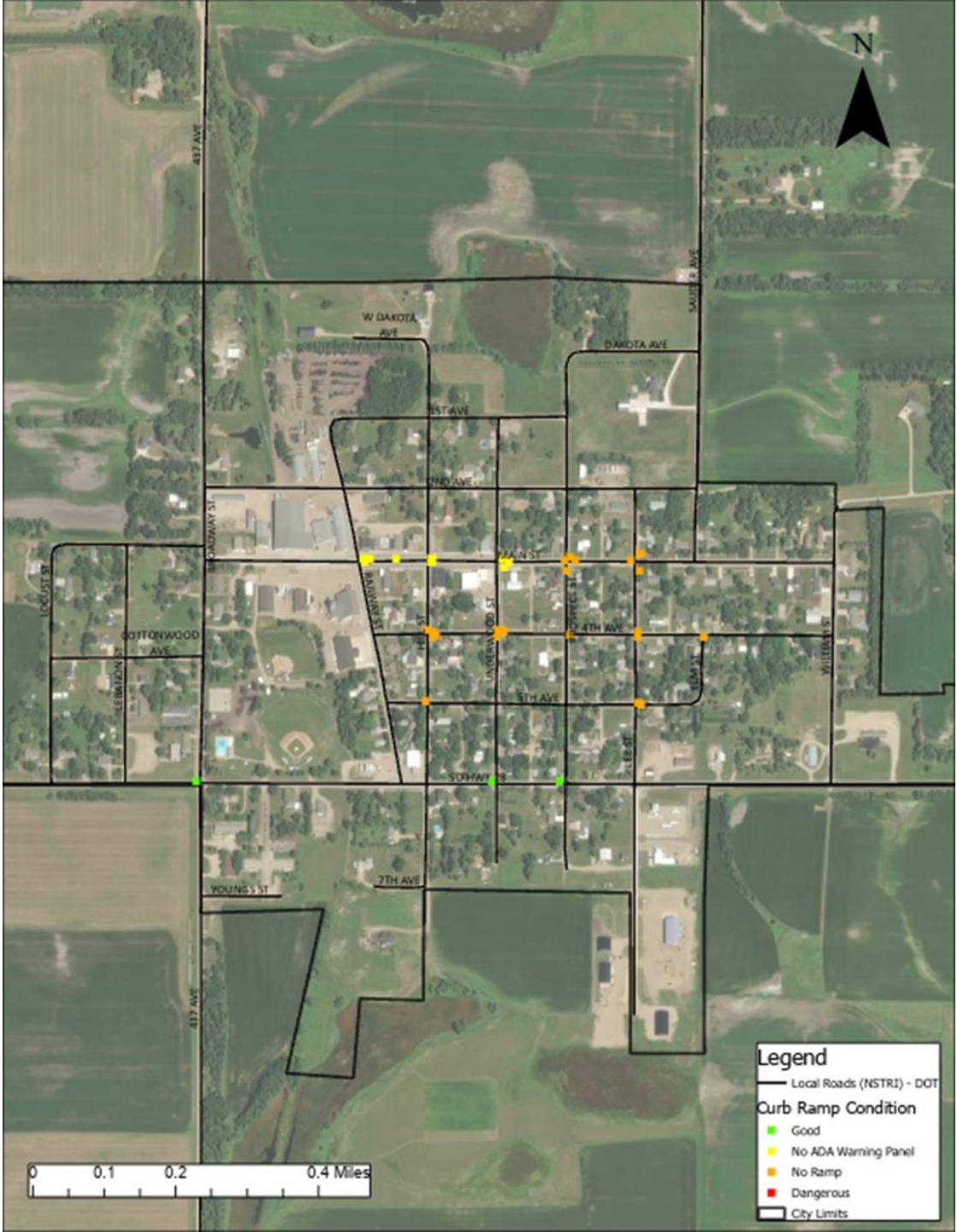
Sidewalk Condition Map:



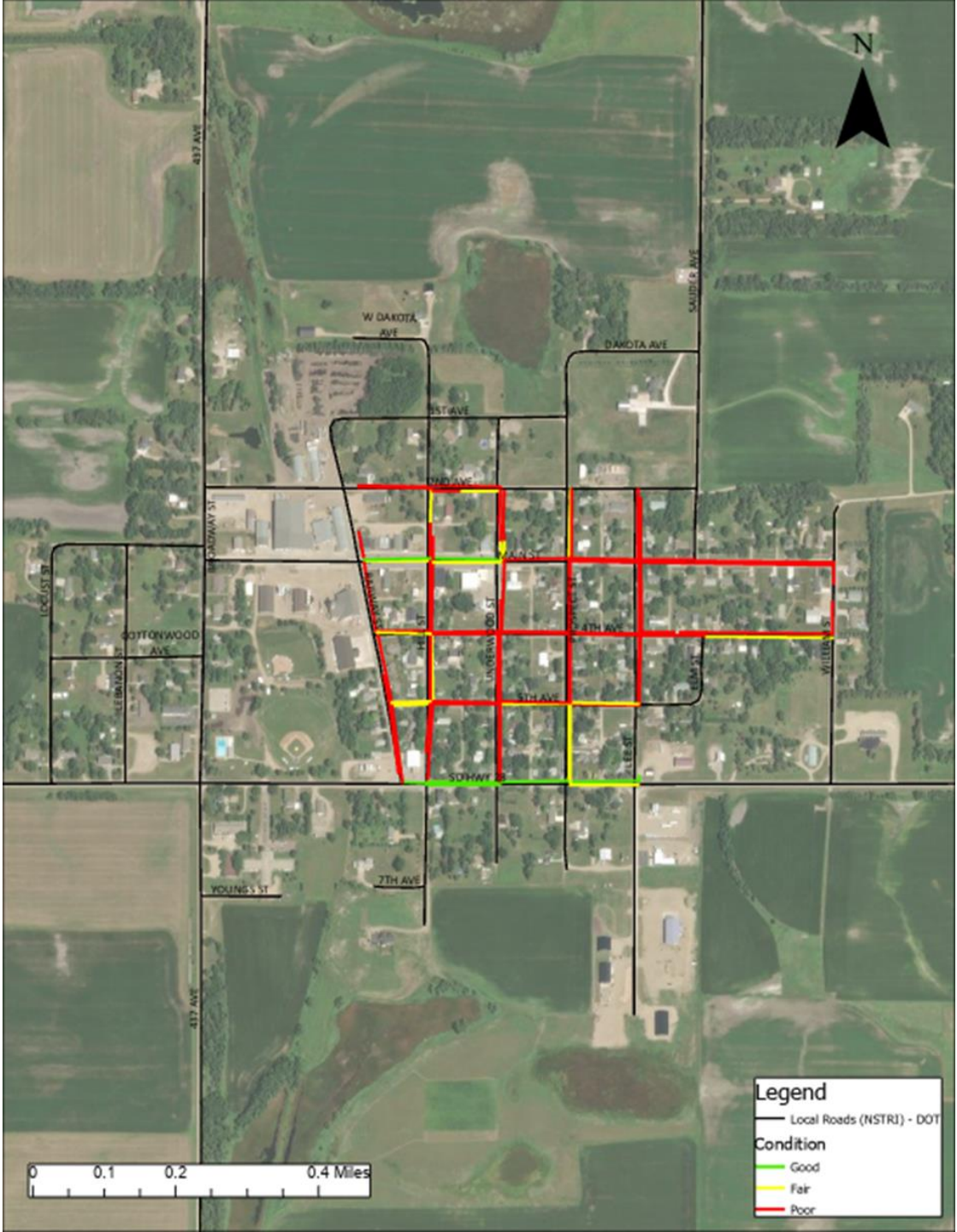
Sidewalk Condition Map:



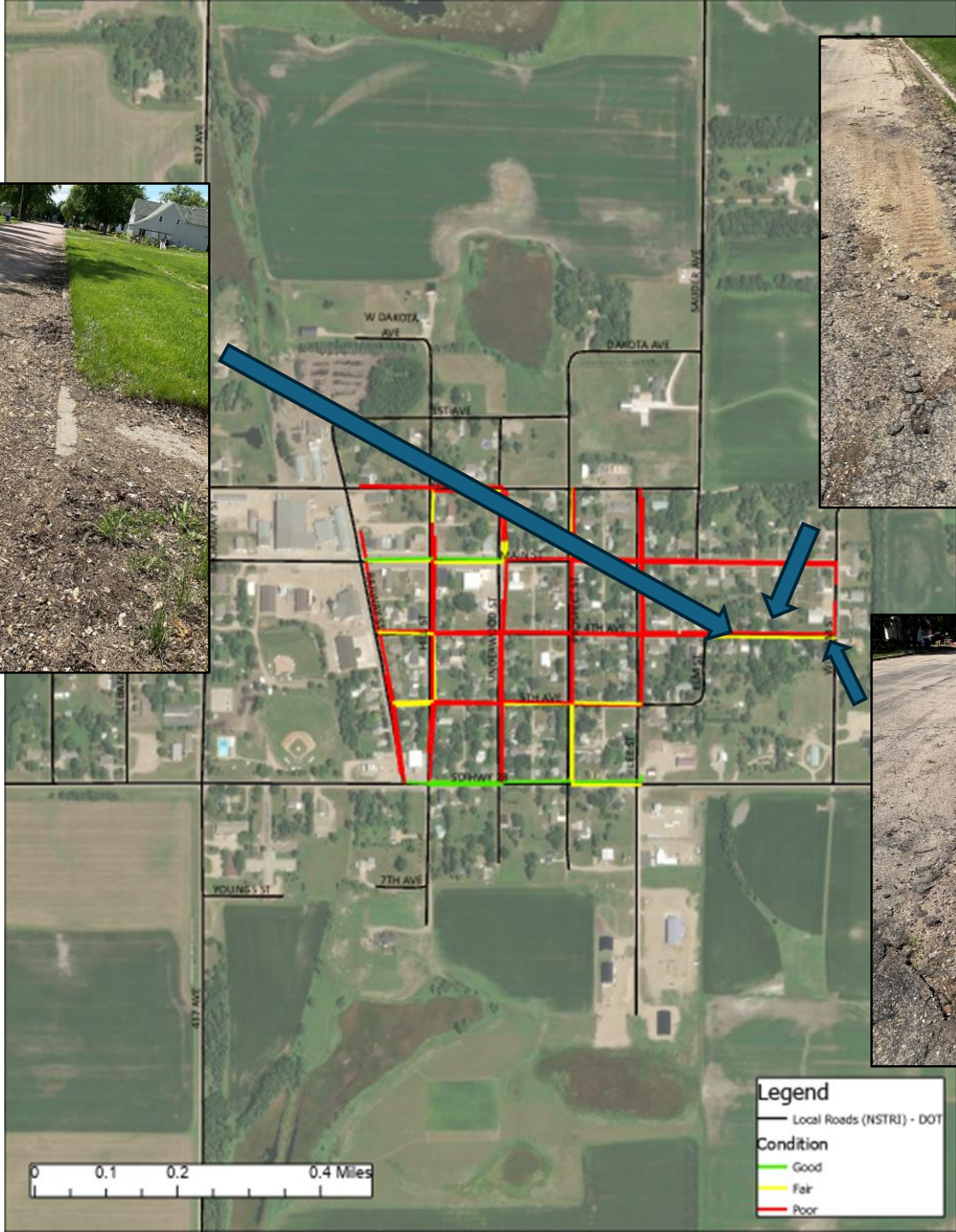
Curb Ramp
Condition
Map :



Curb and
Gutter
Condition
Map:



Curb and
Gutter
Condition
Map:



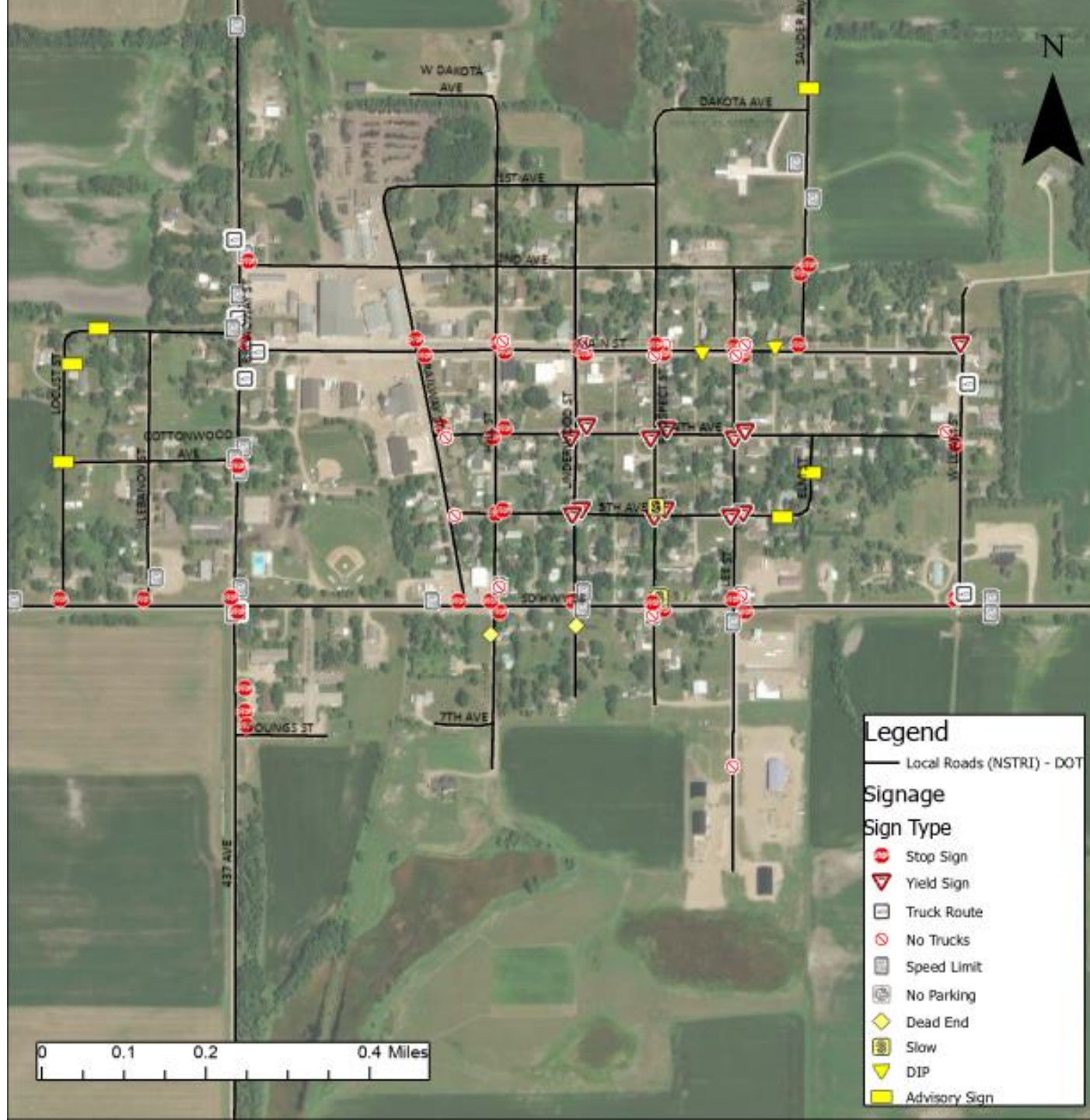
Legend

Local Roads (NSTR1) - DOT

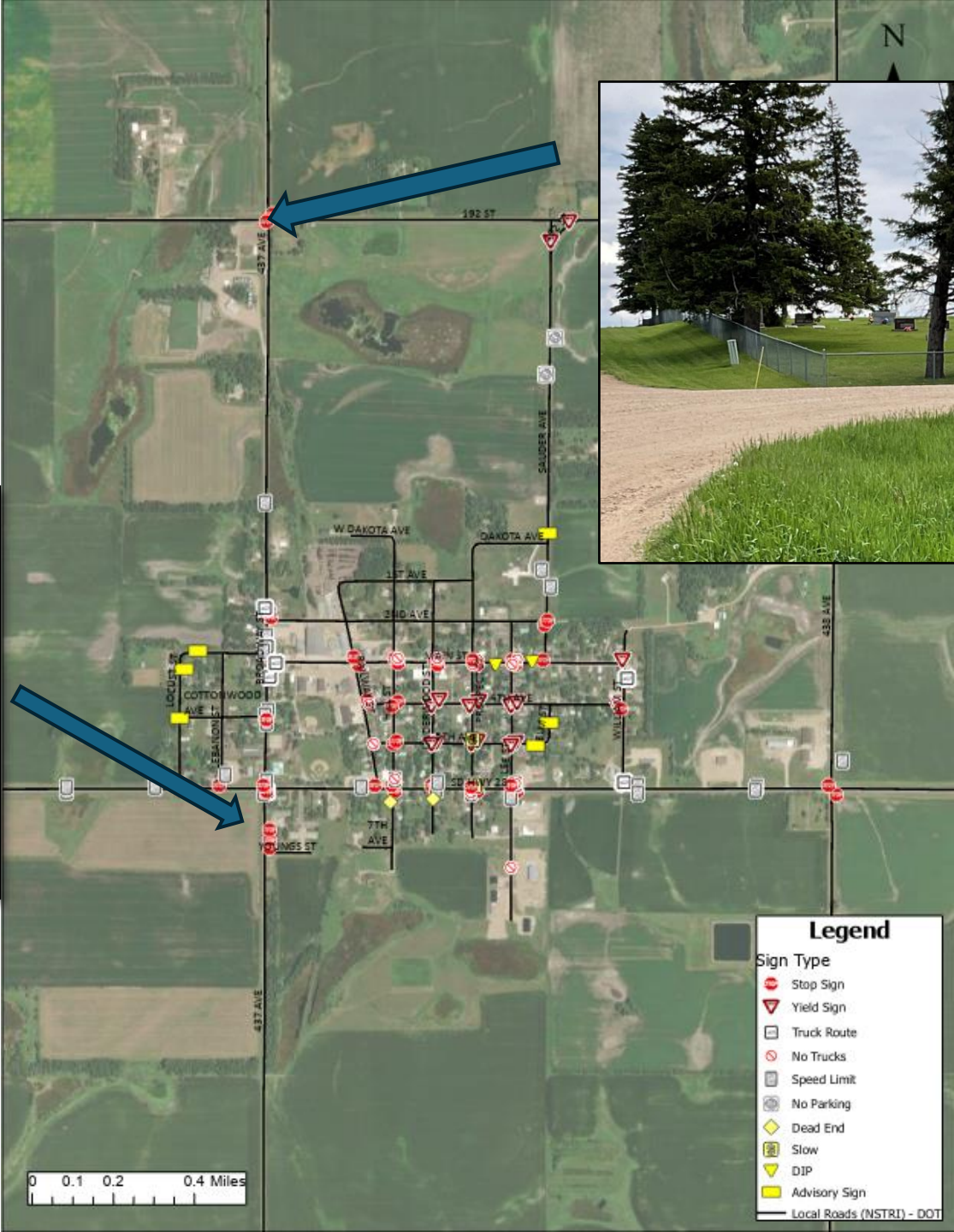
Condition

- Good
- Fair
- Poor

Signage Map:



Signage
Map:



Contact Information

Phone or Email

- Steve Gramm
 - 605-772-3281
 - steve.gramm@state.sd.us
- Katrina Burckhard
 - 605-773-6641
 - katrina.burckhard@state.sd.us
- Emalee Larson
 - 605-910-4923
 - emalee.larson@state.sd.us
 - If you have trouble accessing the survey, please email Emalee for a direct link.

Mail

SDDOT Office of Project Development
700 E. Broadway Ave.
Pierre, SD 57501

Thank You !

Questions / Comments

Please participate in our survey!

Survey:

<https://www.surveymonkey.com/r/GSTFQDR>