

# Public Meeting

**NH 0050(133)381 PCN 077J**  
**S.D. Highway 50 in Yankton**

**Brandon Riss, PE**  
**Design Project Engineer**

**Thursday, Oct. 13, 2022**



# Purpose of the Meeting

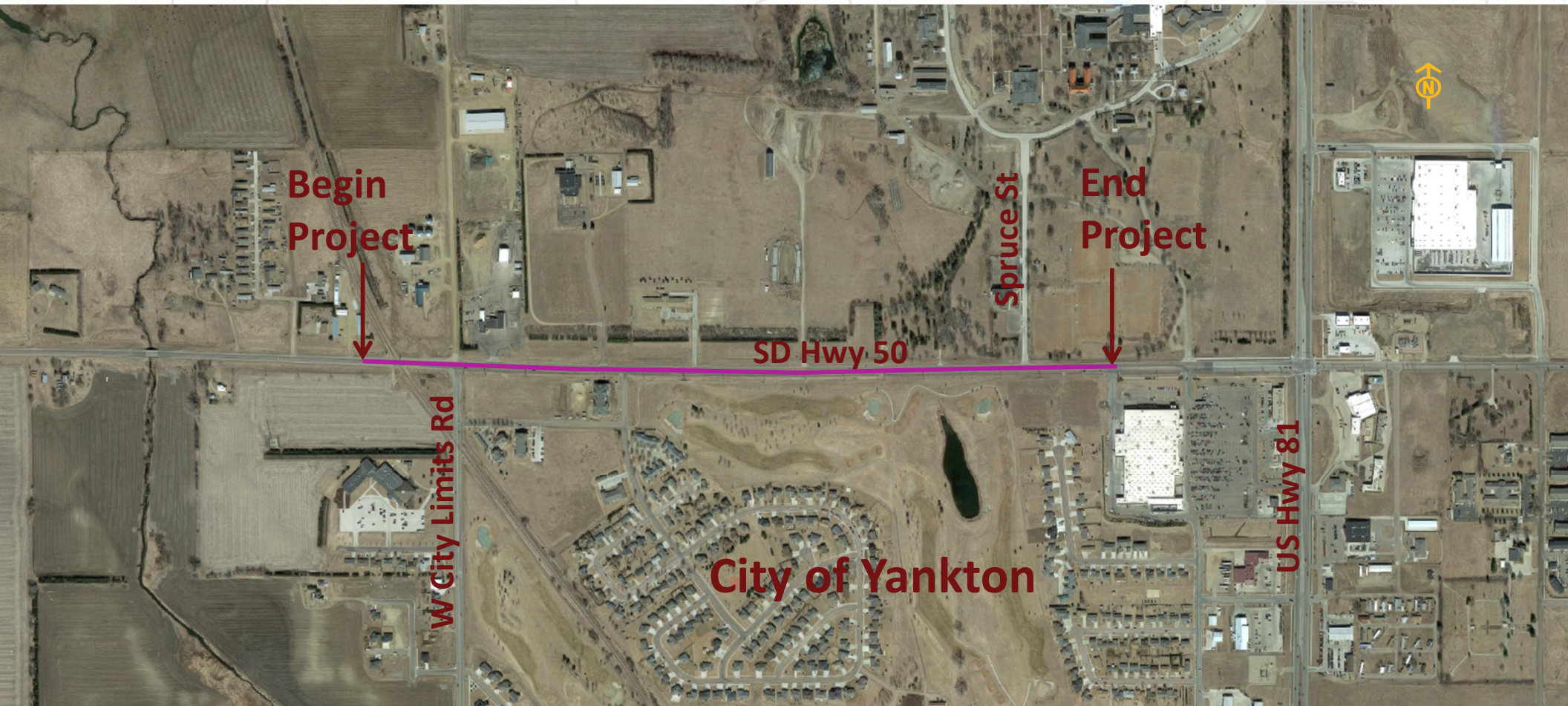
**Involve the public  
in the planning  
and design process**

**Provide a Project  
Overview**

**Gather Input and  
Comments**

- **Background Information**
- **Proposed Project**
- **Project Schedule**

# Project Limits



# Background Information

A map of South Dakota showing major roads and cities. The map is light-colored with blue lines for roads and green areas for parks or grasslands. Major cities like Buffalo, Spearfish, Rapid City, Fort Pierre, and Fort Thompson are labeled. The state name 'SOUTH DAKOTA' is visible in the center.

Grading & Curb and Gutter in 1979

Last Surface Improvements in 2015

Bike Trail Construction in 2018

A photograph of a road with a bike trail under construction. The road is paved and has a white curb on the left side. A blue sign with the text 'SD-50' is visible on the road. The background shows a clear blue sky, some trees, and buildings in the distance. The road is labeled 'SD-50' in white paint.

# Traffic

**2021 Average Daily Traffic (ADT) =  
3,757**

**2046 Projected ADT =  
6,124**

**9.3% Average Truck Traffic**

# Crash History

## 15 Reported Crashes

- 4 Intersection Crashes
- 6 Rear End Crashes
- 2 Animal Hit
- 1 Angle Non-Intersection
- 1 Head-On Crash
- 1 Run-Off-Road Crash

1 Fatality

**5 Year Period from  
2017 to 2021**

- Reported Crash Rate = 4.96
- Statewide Weighted Crash Rate = 1.92 (crashes per million vehicle miles of travel)

**Urban Principal  
Arterial**

# Why We Are Reconstructing

Rear End Crashes

Intersection Lane Configuration

Improve Safety



# Proposed Improvements

**Add Additional WB Lane to  
Accommodate New Left Turn Lane**

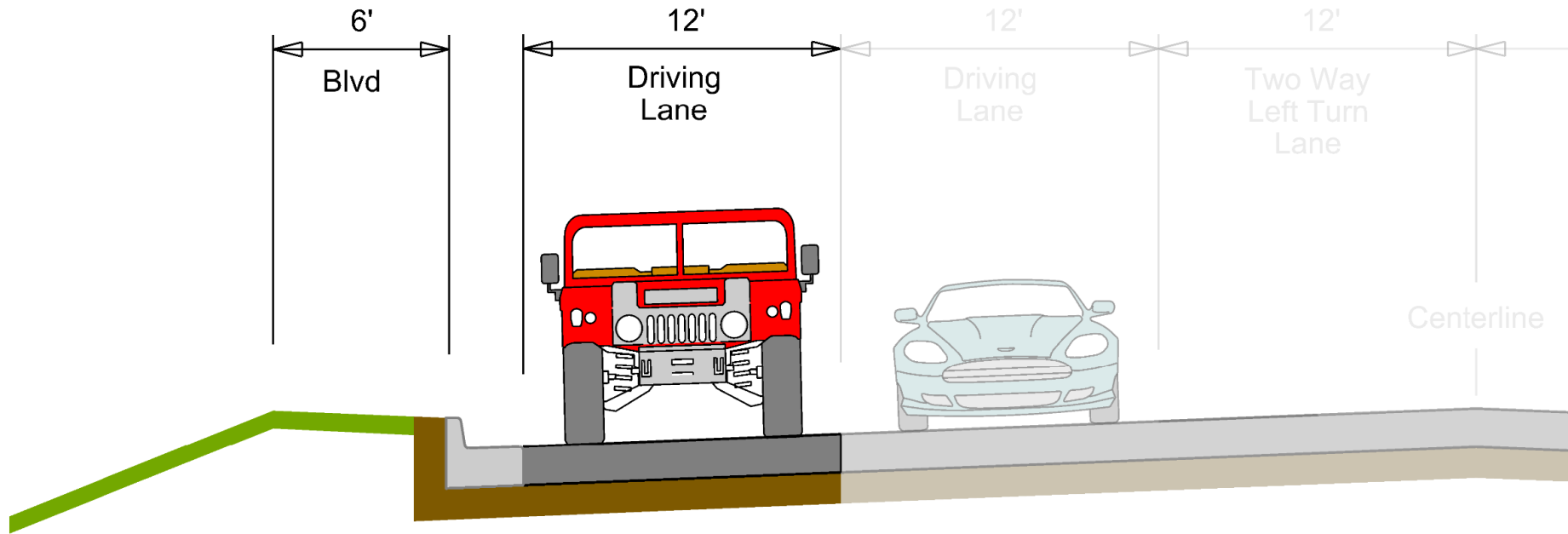
**Replaced Storm Sewer as Needed**

**New Roadway Lighting**



# Proposed Typical Section

ROW  
55' to 75' L



# Roadway Lighting

Replace Existing  
Lighting  
LED



# Access Management

**Manage location and number of access points**

Provide safe,  
efficient access to  
streets and  
highways

Relocating,  
combining and  
eliminating access  
points

**See Handout**

# Right of Way (ROW)

Existing Width varies 100-133 feet

Purchase additional ROW as needed

Temporary Easements as needed for construction

See Handout

# Encroachments

**Private  
Property in  
Public ROW**

**Federal Highway Regulations for  
Safety**

**Examples**

- Signs
- Private Use (Parking)
- Landscaping Items

**Notification**

**Owners of Encroachments will be  
notified by the Yankton Area  
Office**

**See Handout**

# Utility Coordination

Some Utilities  
may need to be  
relocated

Utility Companies  
negotiate  
easements with  
landowners

B-Y Water  
Vast Broadband  
MidAmerican Energy  
Midco  
Northwestern Energy  
SDN Communications  
Lumen  
City of Yankton

See Handout

# Utility Coordination

**Any Known  
Private Utilities?**

**Contact SD DOT**

**Water Lines**

**Drain Fields**

**Septic Tanks**

**Underground Storage Tanks**

**Underground Power Lines**

**See Handout**

# Environmental, Social and Economic Concerns

**This project is being developed in accordance with applicable State and Federal environmental regulations.**

- **National Environmental Policy Act of 1969 (NEPA), as amended.**
- **Section 106 of the National Historic Preservation Act (No historic or archaeological sites will be impacted by the project)**

**See Handout**



# Environmental, Social and Economic Concerns

- **Section 404 of the Clean Water Act** (No wetlands will be impacted by the project)
- **Section 4(f) of the USDOT Transportation Act of 1966** (Lewis and Clark Soccer Complex is a Section 4(f) resource. No permanent impact to the complex by the project)

**See Handout**

# Environmental, Social and Economic Concerns

## • Section 7 of the Endangered Species Act

The U.S. Fish and Wildlife Service will review the project to determine if it will impact the following species that are known to occur in Yankton County:

- Birds: Least Tern, Piping Plover & Red Knot
- Mammals: Northern Long-Eared Bat
- Clams: Higgins eye & Scaleshell mussel
- Fish: Pallid Sturgeon

**No impacts are anticipated to these species by the project.**

**See Handout**

# Construction Traffic Control

1 Year

Open to Traffic  
with Lane Closures

# Landowner Meetings

Landowners adjacent to the project will be contacted individually by SDDOT to schedule a meeting

## Discussion Items:

- Driveway locations/widths
- Fences
- Drainage
- Trees
- Temporary Easements or ROW acquisition

**See Handout**

# Tentative Project Schedule

Dependent on Federal Funding

**Winter  
2022/2023**  
Landowner  
Meetings

**Spring  
2023**  
Final Design

**2023 &  
2024**  
ROW  
Acquisition

**2026**  
Construction

Estimated Cost: \$1.7 million

# Public Input

Submit Questions and/or Comments:

by:

**Friday, Oct. 28, 2022**



to:

Brandon Riss  
SDDOT  
5316 W 60<sup>th</sup> St N  
Sioux Falls, SD 57107  
[Brandon.Riss@state.sd.us](mailto:Brandon.Riss@state.sd.us)

Public Meeting Information can be found at:

[https://dot.sd.gov/projects-studies/projects/public-meetings#listItemLink\\_1819](https://dot.sd.gov/projects-studies/projects/public-meetings#listItemLink_1819)