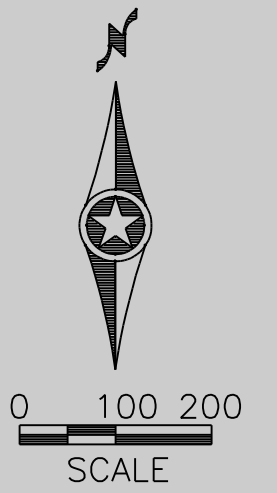
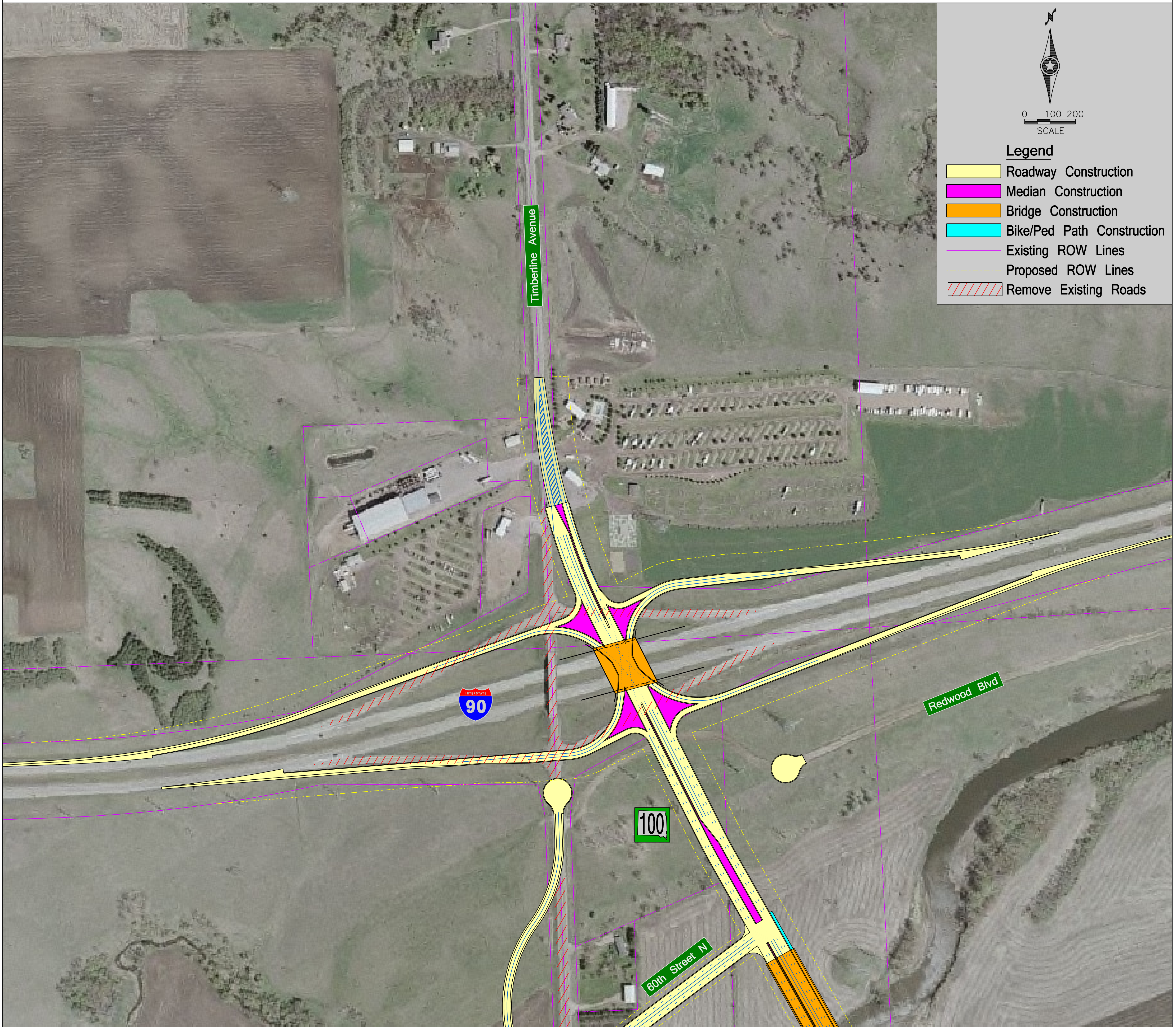


Single Point Interchange at SD100 and I-90



Legend

- Roadway Construction
- Median Construction
- Bridge Construction
- Bike/Ped Path Construction
- Existing ROW Lines
- Proposed ROW Lines
- Remove Existing Roads

Timberline Avenue



Redwood Blvd

100

60th Street N

Drawn by: Brenda Miller
Date: 01-11-07
Checked by: Steve Hoff
Date: 01-11-07
Revisions:
Date:



P0100(101)405 PCN 00T7
SD100 Corridor Preservation
January 2007

Interstate 90 – Exit 402
Option 2 – Single Point
Interchange