



DEPARTMENT OF
TRANSPORTATION

PUBLIC MEETING

Project Location: on S.D. Highway 44 near Cliffside Park, located four miles west of the S.D. Highway 231 junction

Project Number: NH 0044(203)39 PCN 05Q8

Date: Thursday, Oct. 17, 2024, 5:30 p.m.

Richard Sudmeier, PE

FMG Engineering

MISSION

To efficiently provide a safe and effective public transportation system.

<https://dot.sd.gov/>

PURPOSE OF THE MEETING

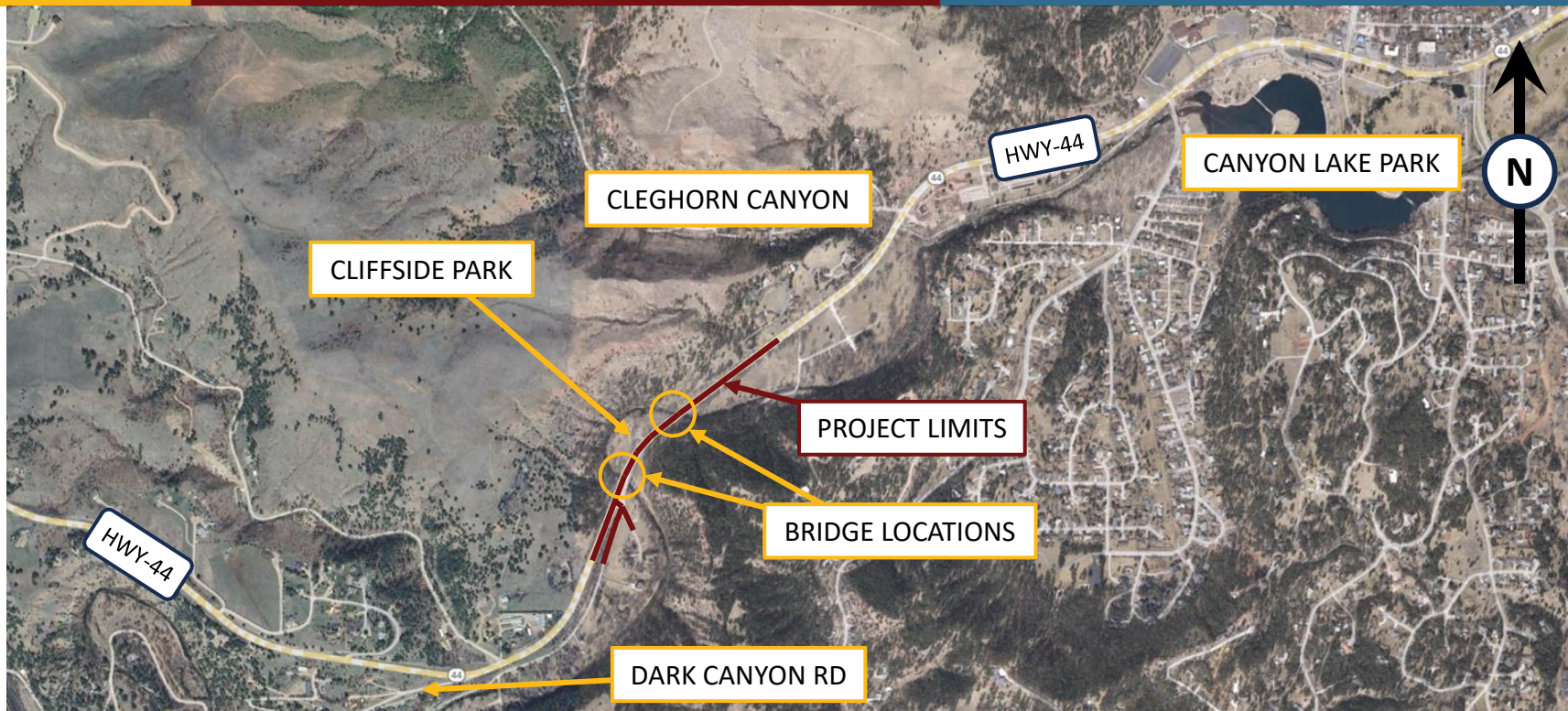
Involve the public in the planning and design process

Provide a project overview

Gather input and comments

- ✓ Background information
- ✓ Proposed project
- ✓ Project schedule

PROJECT LIMITS



BACKGROUND INFORMATION

Structure(s) Built in 1965

Improvements made to Bridge Barrier(s) in 2000

TRAFFIC

2020 Average Daily Traffic (ADT) = 4,816

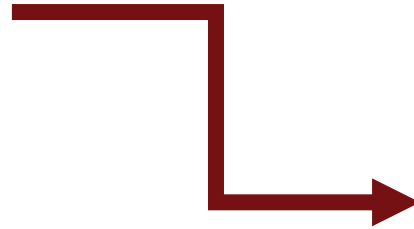
2044 Projected ADT = 9,350

3.7% Average Truck Traffic

CRASH HISTORY

5 Year Period from 2014 to 2018

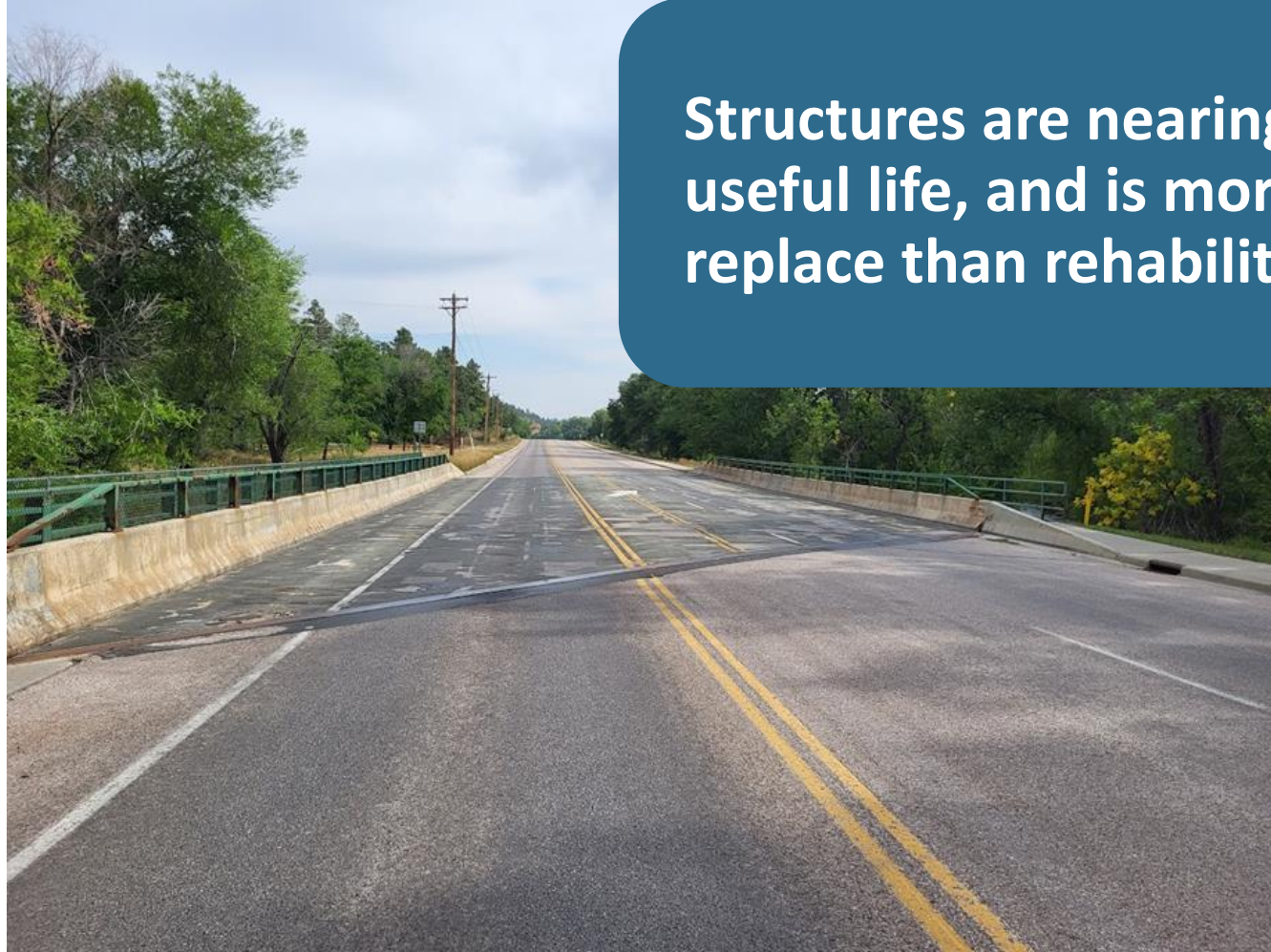
- 1 Reported Crashes
- 1 Struck Bridge
- Zero (0) fatalities



Urban Principal Arterial

- Reported crash rate = 0.43
- Statewide weighted crash rate = 1.92 (crashes per million vehicle miles of travel)

WHY WE ARE RECONSTRUCTING



Structures are nearing the end their useful life, and is more economical to replace than rehabilitate

PROPOSED IMPROVEMENTS

Replace Structures

Raise the Highway and move to the east for Construction of the new Structures

Realign Trout Court Intersection

Add Sidewalks to Access Cliffside Park



PROPOSED BRIDGES



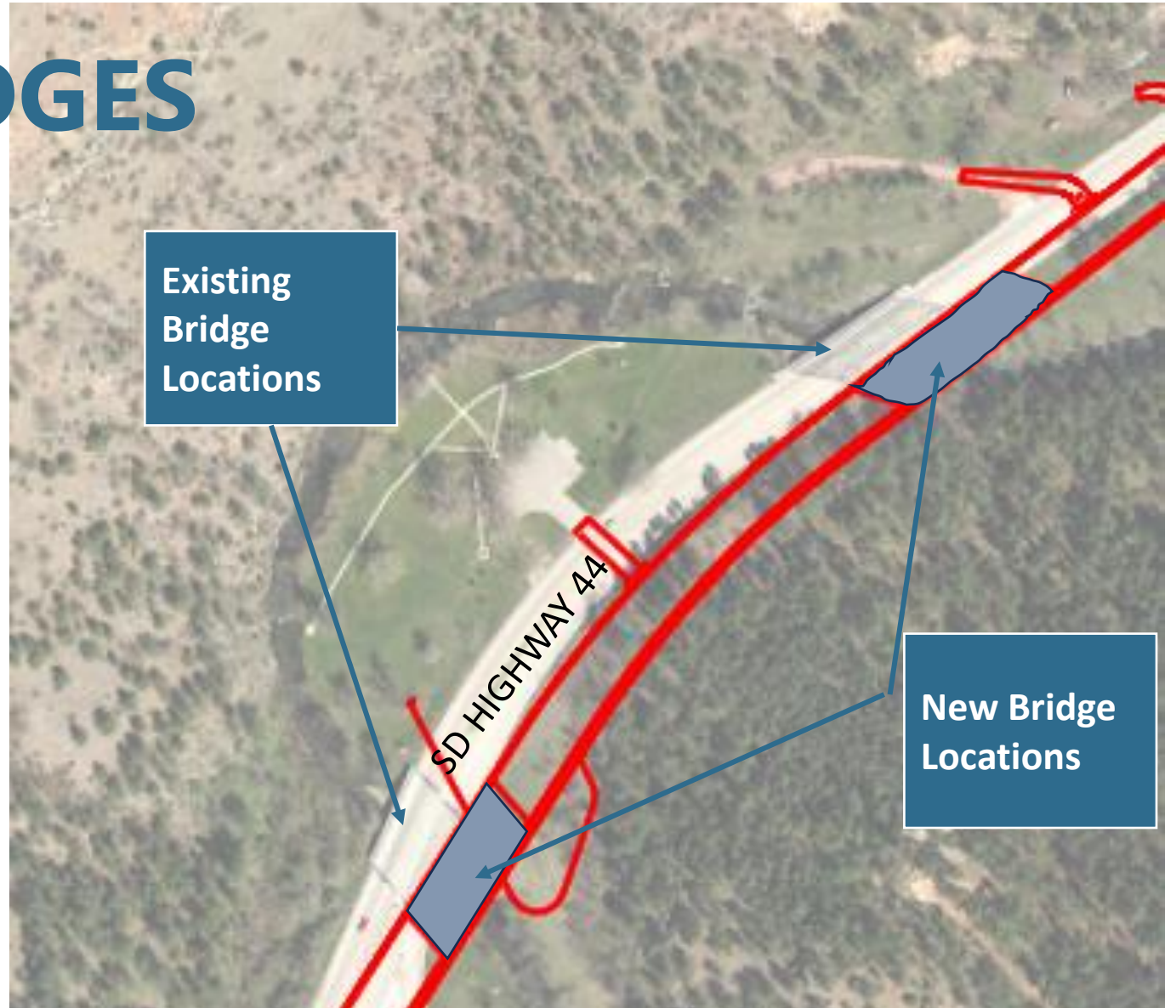
Longer and Taller Bridges

Accommodate Higher Flows

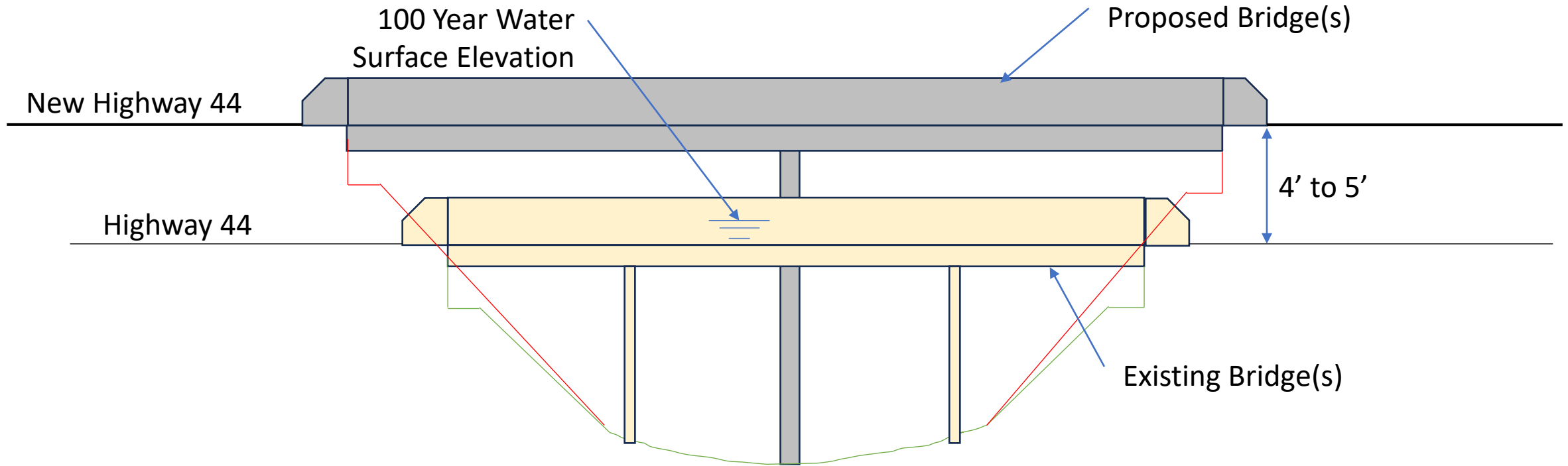
Sidewalk on Bridge Located on the East / South Side

New Bridges are Approximately 50' East / South of Existing for Constructability

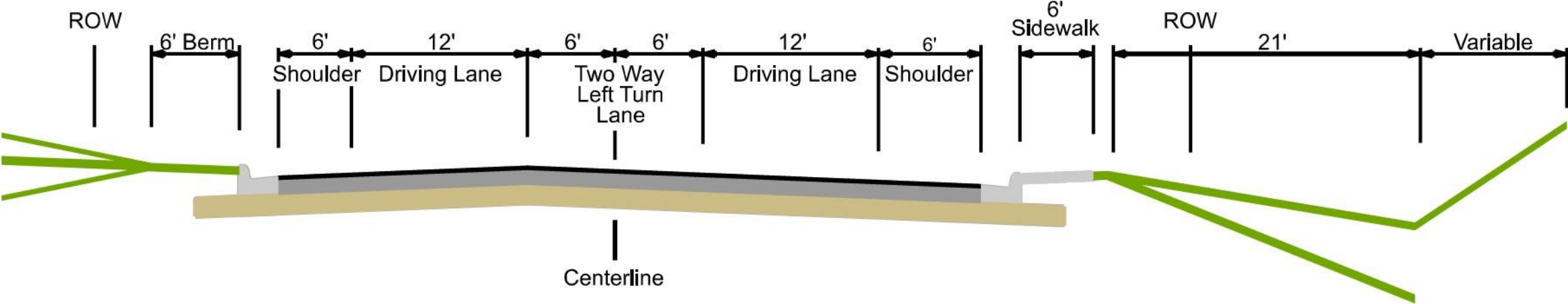
PROPOSED BRIDGES



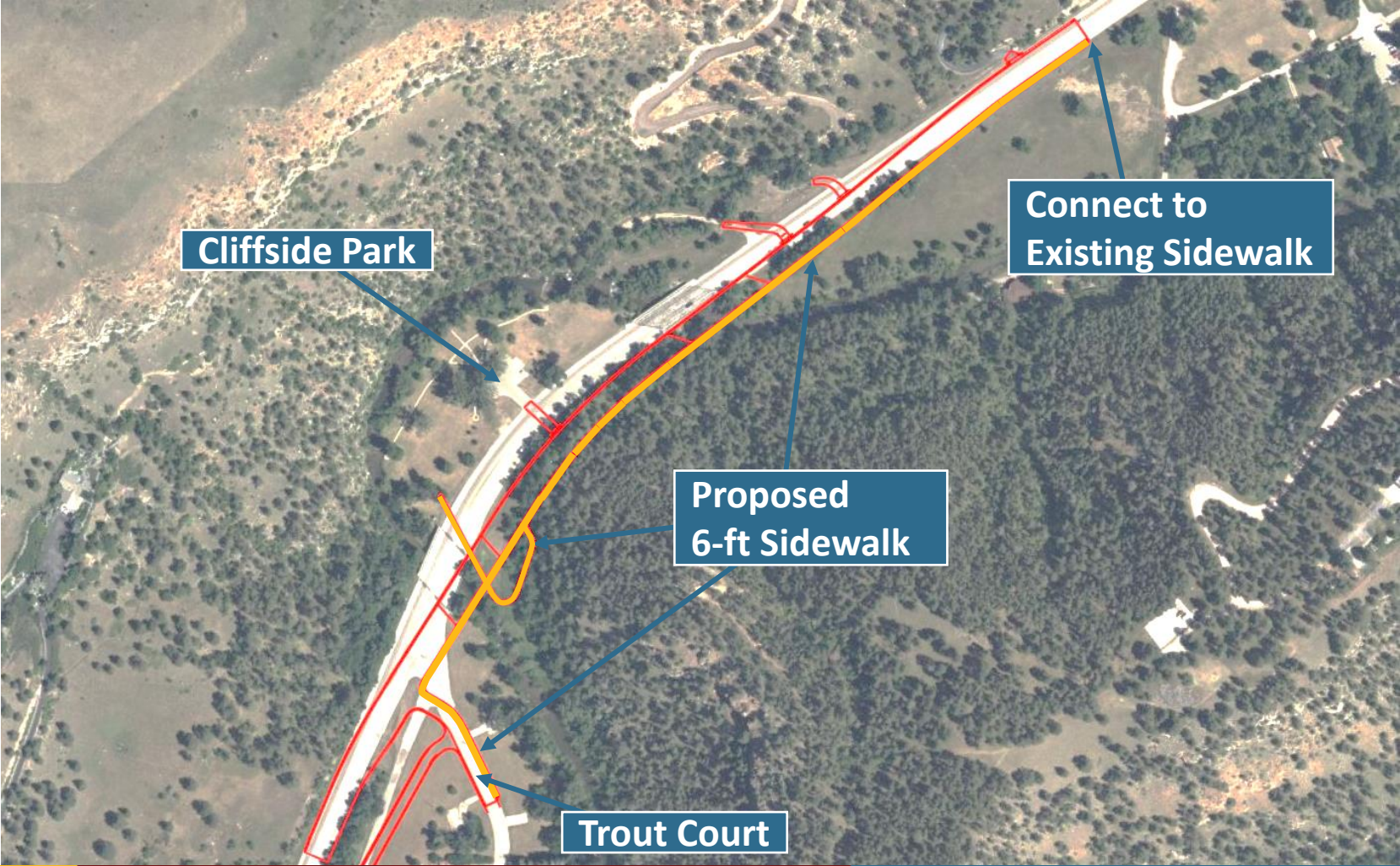
PROPOSED BRIDGES



PROPOSED ROADWAY WIDTH



PROPOSED PEDESTRIAN FACILITIES



ACCESS MANAGEMENT

Provide safe, efficient access to streets and highways by limiting the number of direct accesses to major roadways.

✓ See handout

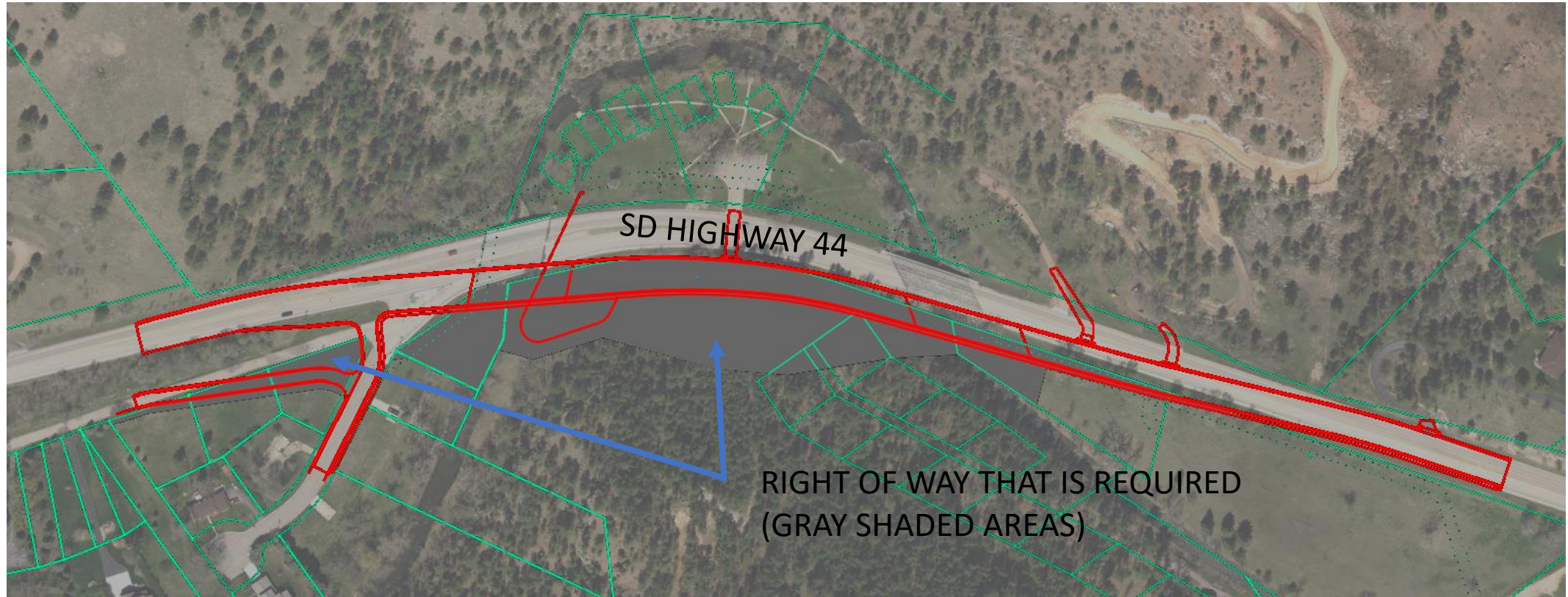
RIGHT OF WAY (ROW)

Existing width = 100 feet

Purchase additional ROW for New Highway Location

Temporary easements as needed

RIGHT OF WAY (ROW)



See handout

ENCROACHMENTS

Private property in public ROW

Federal highway regulations for safety

Examples

- Signs
- Private use (parking)
- Landscaping items

Notification

Owners of encroachments will be notified by the Rapid City Area Office.

UTILITY COORDINATION

Some utilities may need to be relocated.

Utility companies negotiate easements with landowners.

- Montana Dakota Utilities
- Black Hills Energy
- Lumen / Century Link
- SDN Communications
- Rapid Canyon Sanitary District

UTILITY COORDINATION

Any known
private utilities?

- Water Lines
- Drain fields
- Septic tanks
- Underground storage tanks
- Underground power lines

Contact SDDOT

See handout

ENVIRONMENTAL, SOCIAL, AND ECONOMIC CONCERNS

- **Section 404 of the Clean Water Act**
- **Section 4(f) of the USDOT Transportation Act of 1966** (The Adjacent City Park is a Section 4(f) resource. No permanent impact to the Park is anticipated)

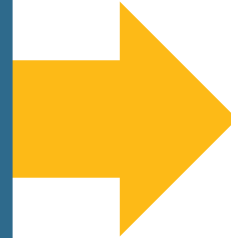
ENVIRONMENTAL, SOCIAL, AND ECONOMIC CONCERNS

This project is being developed in accordance with applicable State and Federal environmental regulations.

National Environmental Policy Act of 1969 (NEPA), as amended. Coordination has been initiated with State & Federal resource agencies.

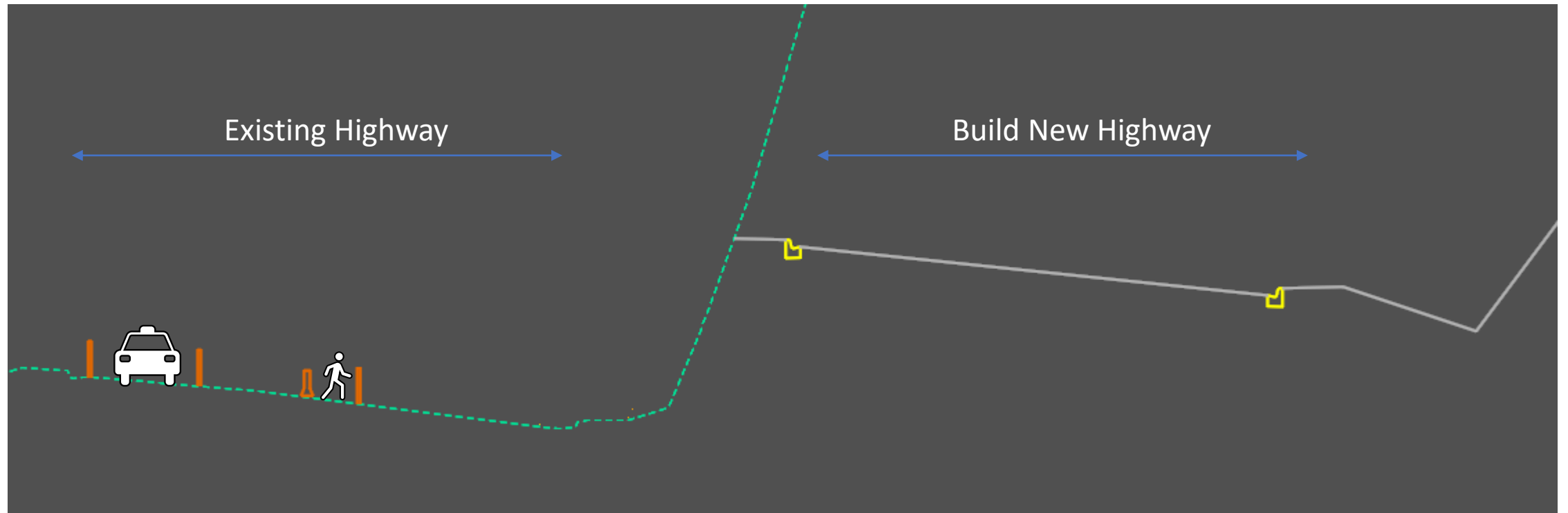
CONSTRUCTION TRAFFIC CONTROL

Current Roadway will remain Open
While Construction of the New
Highway is Built



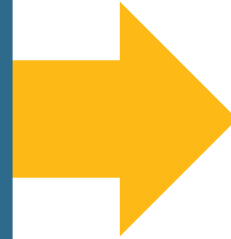
Two Lanes Roadway with
Pedestrian Access Maintained

CONSTRUCTION TRAFFIC CONTROL



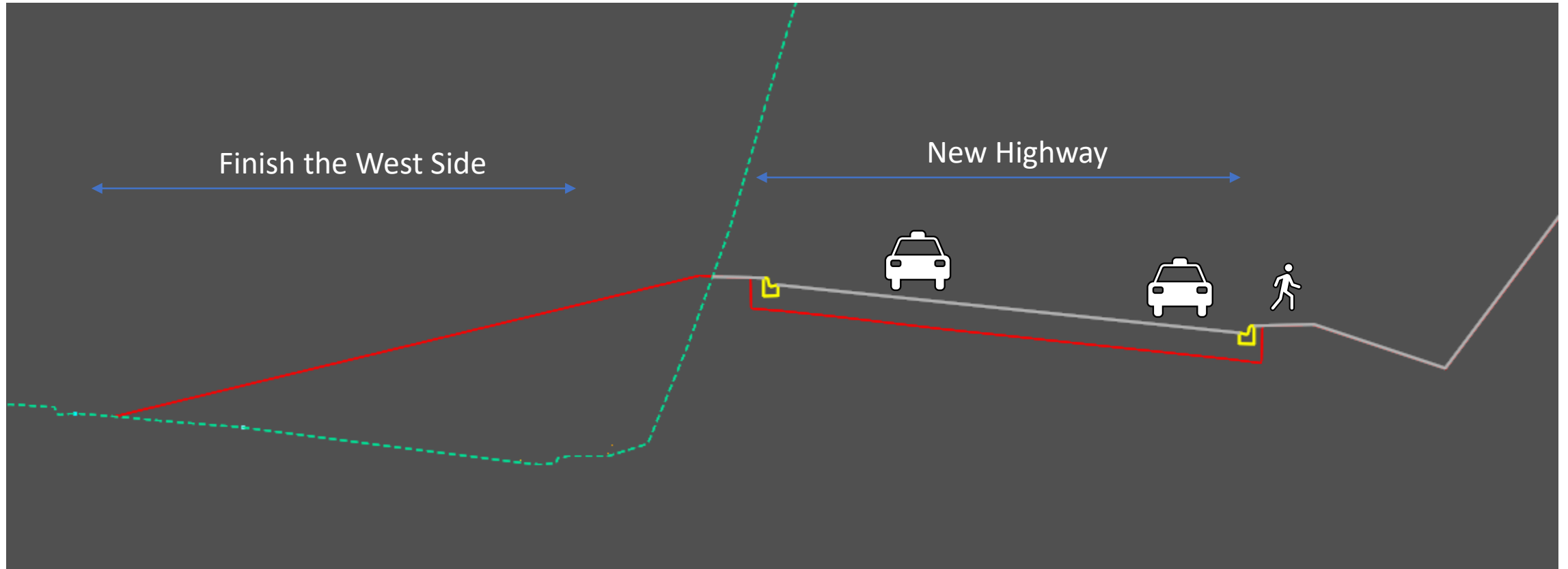
CONSTRUCTION TRAFFIC CONTROL

Switch to New Roadway when at
Least ½ of the Highway is
Completed



Two Lanes Roadway with
Pedestrian Access Maintained

CONSTRUCTION TRAFFIC CONTROL



LANDOWNER MEETINGS

December 2024

Landowners adjacent to the project will be contacted individually by SDDOT to schedule a meeting.

Discussion Items

- Driveway locations/widths
- Fences
- Drainage
- Temporary easements or ROW acquisition

TENTATIVE PROJECT SCHEDULE

Estimated Cost: \$11.0 million

Landowner
meetings

ROW
acquisition

December 2024

2025

Spring/Summer
2025

2027

Final
design

Construction

QUESTIONS OR COMMENTS

DEADLINE:

Friday, Nov. 1, 2024

SUBMIT TO:

Richard Sudmeier, PE

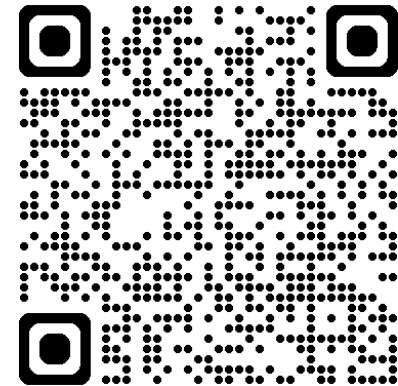
FMG Engineering

3700 Sturgis Road

Rapid City, SD 57702

rsudmeier@fmgengineering.com

THANK YOU



SCAN ME