

Preliminary

STATE OF SOUTH DAKOTA
DEPARTMENT OF TRANSPORTATION
PLANS FOR PROPOSED

Preliminary

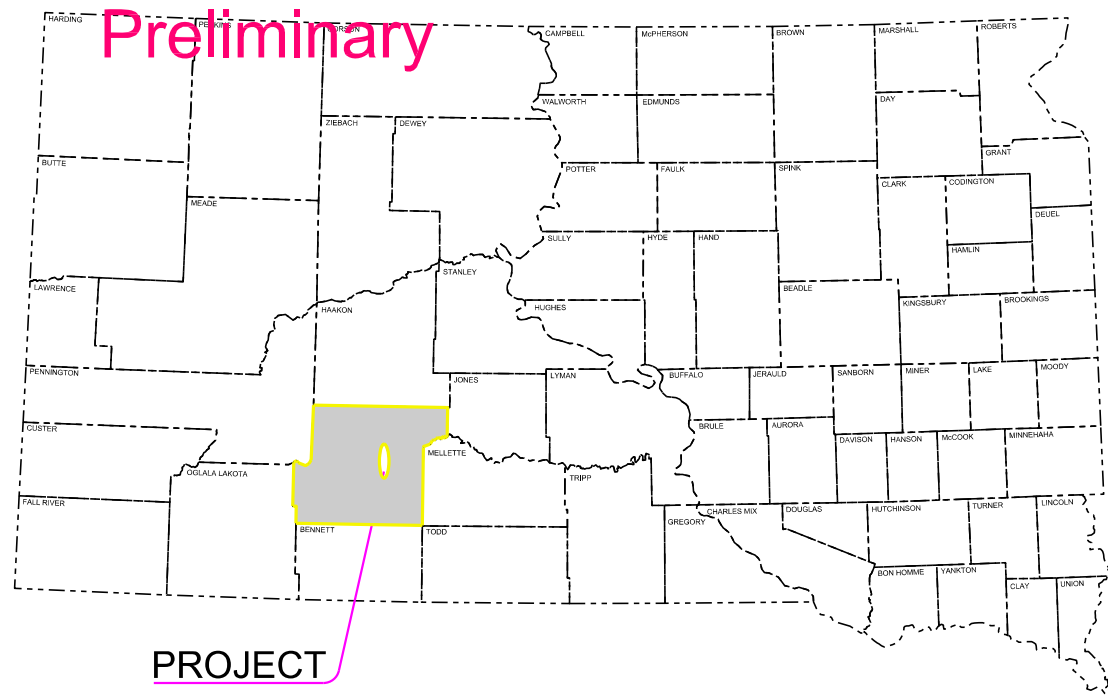
STATE OF SOUTH DAKOTA	PROJECT	SHEET	TOTAL SHEETS
	NH 0073(73)62	1	20

Plotting Date: 07/09/2020

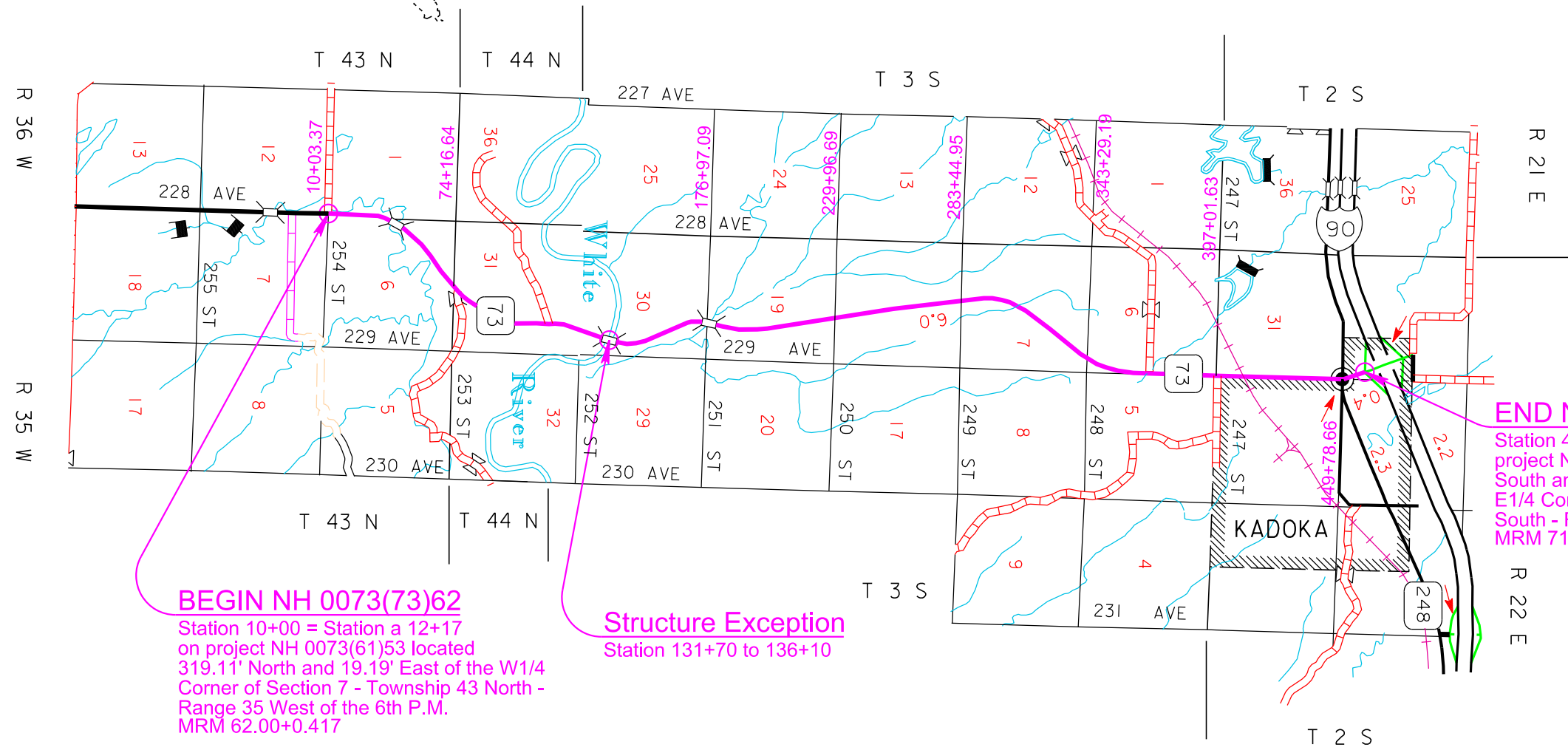
PROJECT NH 0073(73)62
S.D. HIGHWAY 73
JACKSON COUNTY

ROW PLANS

PCN 05HV



PROJECT



BEGIN NH 0073(73)62
 Station 10+00 = Station a 12+17
 on project NH 0073(61)53 located
 319.11' North and 19.19' East of the W1/4
 Corner of Section 7 - Township 43 North -
 Range 35 West of the 6th P.M.
 MRM 62.00+0.417

Structure Exception
 Station 131+70 to 136+10

END NH 0073(73)62
 Station 462+77 = Station g 22+56.56 on
 project NH 0073(61)53 located 1390.76'
 South and 248.07' West of the
 E1/4 Corner of Section 30 - Township 2
 South - Range 22 East of the B.H.M.
 MRM 71.00+0.190

LEGEND

STATE AND NATIONAL LINE	—+—+—+—+—+—+—+—+—+—
COUNTY LINE	—+—+—+—+—+—+—+—+—+—
SECTION LINE	—+—+—+—+—+—+—+—+—+—
QUARTER LINE	—+—+—+—+—+—+—+—+—+—
SIXTEENTH LINE	—+—+—+—+—+—+—+—+—+—
PROPERTY LINE	—+—+—+—+—+—+—+—+—+—
CONSTRUCTION LINE	—+—+—+—+—+—+—+—+—+—
EXISTING R.O.W. LINE	—+—+—+—+—+—+—+—+—+—
PROPOSED R.O.W. LINE	—+—+—+—+—+—+—+—+—+—
CUT AND FILL LIMITS	—+—+—+—+—+—+—+—+—+—

Gross Length 45277.22 Feet 8.575 Miles

Preliminary

Preliminary

Preliminary

Plot Scale - 1:200

Plotted From - tpr13315

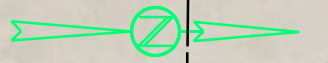
File - U:\proj\jac05HV\Title.dgn

Preliminary

Preliminary

STATE OF SOUTH DAKOTA	PROJECT	SHEET	TOTAL SHEETS
	NH 0073(73)62	2	20

Plotting Date: 07/09/2020
 Flown Date: FSA 2018
 Photo Not to Scale



Plot Scale - 1:200

Preliminary

Plotted From - trpr13315

Sec 1 - T43N - R36W

Edward Fisher
 The SE1/4 of Section 1 - Township 43 North -
 Range 36 West of the 6th P.M.

SE1/4

254th Street

1/4 Line

33'

33'

150'

10+00

Present SD Hwy 73

15+00

20+00

25+00

30+00

33'

Section Line

33'

33'

10+03.37

Section Line

Government Lot 7

Government Lot 6

Lloyd M. Olson Estate
 Government Lots 6 and 7 of Section 6 -
 Township 43 North - Range 35 West of the 6th P.M.

150'

35+00

36+61.16

Sec 6 - T43N - R35W

File - U:\trp\proj\jacob\5HV\10\row.dgn

Preliminary

Preliminary

Preliminary

STATE OF SOUTH DAKOTA	PROJECT	SHEET	TOTAL SHEETS
	NH 0073(73)62	3	20

Plotting Date: 07/09/2020
 Flown Date: FSA 2018
 Photo Not to Scale



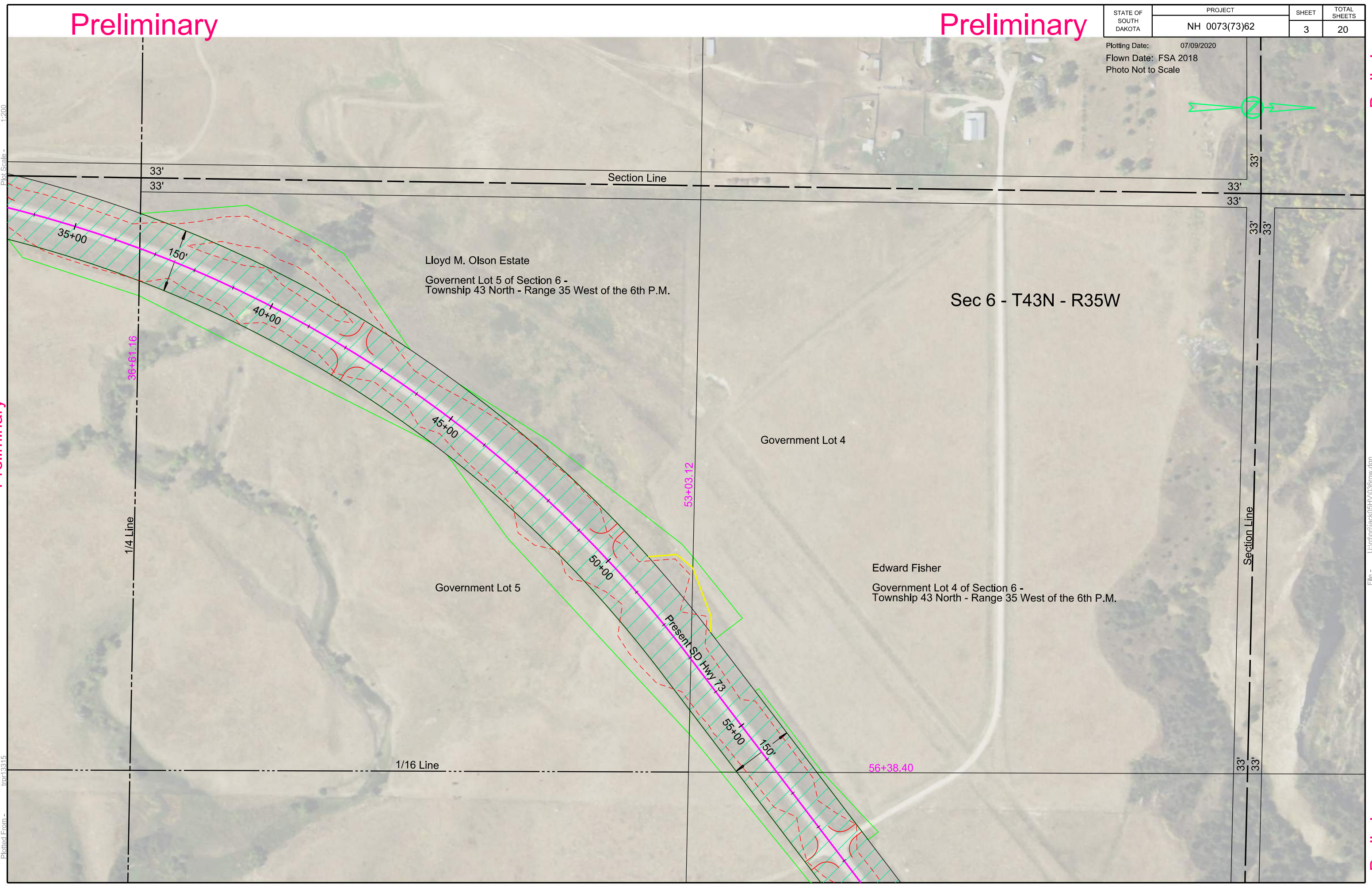
Plot Scale - 1:200

Preliminary

Plotted From - trp-13315

Preliminary

Preliminary



File - U:\trp\proj\jack\05HV\036row.dgn

Preliminary

Preliminary

STATE OF SOUTH DAKOTA	PROJECT	SHEET	TOTAL SHEETS
	NH 0073(73)62	4	20

Plotting Date: 07/09/2020
 Flown Date: FSA 2018
 Photo Not to Scale

Preliminary

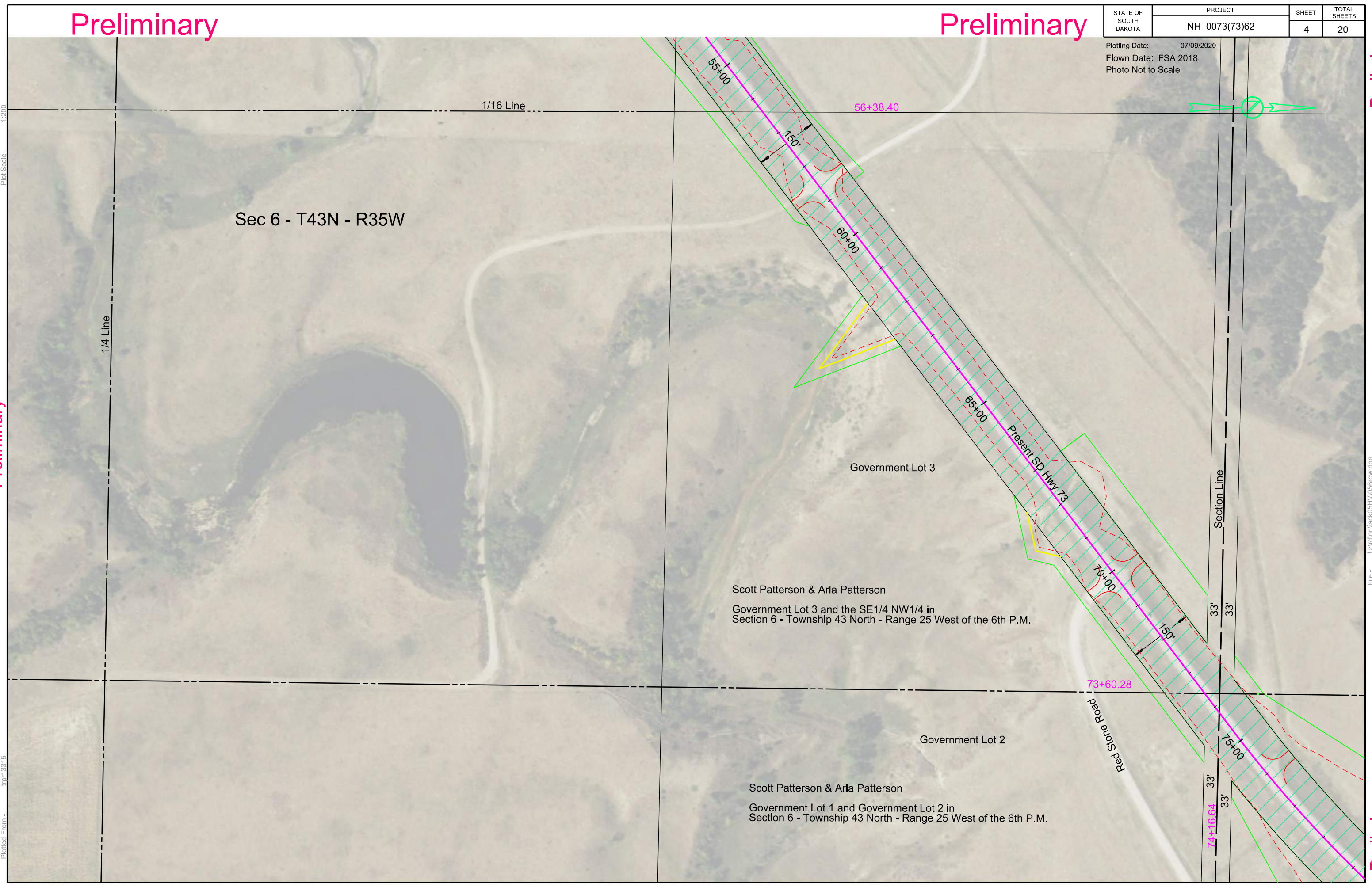
Plot Scale - 1:200

Preliminary

Plotted From - tpr13315

File - U:\trp\proj\jack\05HV\056row.dgn

Preliminary



Sec 6 - T43N - R35W

1/16 Line

1/4 Line

56+38.40

55+00

60+00

65+00

70+00

73+60.28

74+16.64

Government Lot 3

Scott Patterson & Arla Patterson
 Government Lot 3 and the SE1/4 NW1/4 in
 Section 6 - Township 43 North - Range 25 West of the 6th P.M.

Government Lot 2

Scott Patterson & Arla Patterson
 Government Lot 1 and Government Lot 2 in
 Section 6 - Township 43 North - Range 25 West of the 6th P.M.

Red Stone Road

Present SD Hwy 73

Section Line

33'

33'

33'

33'



Preliminary

Preliminary

STATE OF SOUTH DAKOTA	PROJECT	SHEET	TOTAL SHEETS
	NH 0073(73)62	5	20

Plotting Date: 07/09/2020
 Flown Date: FSA 2018
 Photo Not to Scale



Scott Patterson & Arla Patterson
 Government Lots 7 and 8 in Section 31 -
 Township 44 North - Range 25 West of the 6th P.M.

Government Lot 8

Sec 31 - T44N - R35W

White River

Scott Patterson & Arla Patterson
 Government Lots 6 and 9 and the E1/2 SE1/4 of
 Section 31 - Township 44 North - Range 25 West of the 6th P.M.

Government Lot 9

Government Lot 6

Present SD Hwy 73

1/16 Line

Plotted From - 1200

Plotted From - 13315

Preliminary

Preliminary

Preliminary

Section Line
 33'
 33'
 74+16.64
 33'
 33'

75+00

150'

80+00

85+00

90+00

92+63.61

95+00

96+08.90

150'

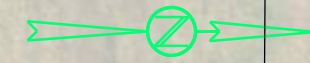
100'

Preliminary

Preliminary

STATE OF SOUTH DAKOTA	PROJECT	SHEET	TOTAL SHEETS
	NH 0073(73)62	6	20

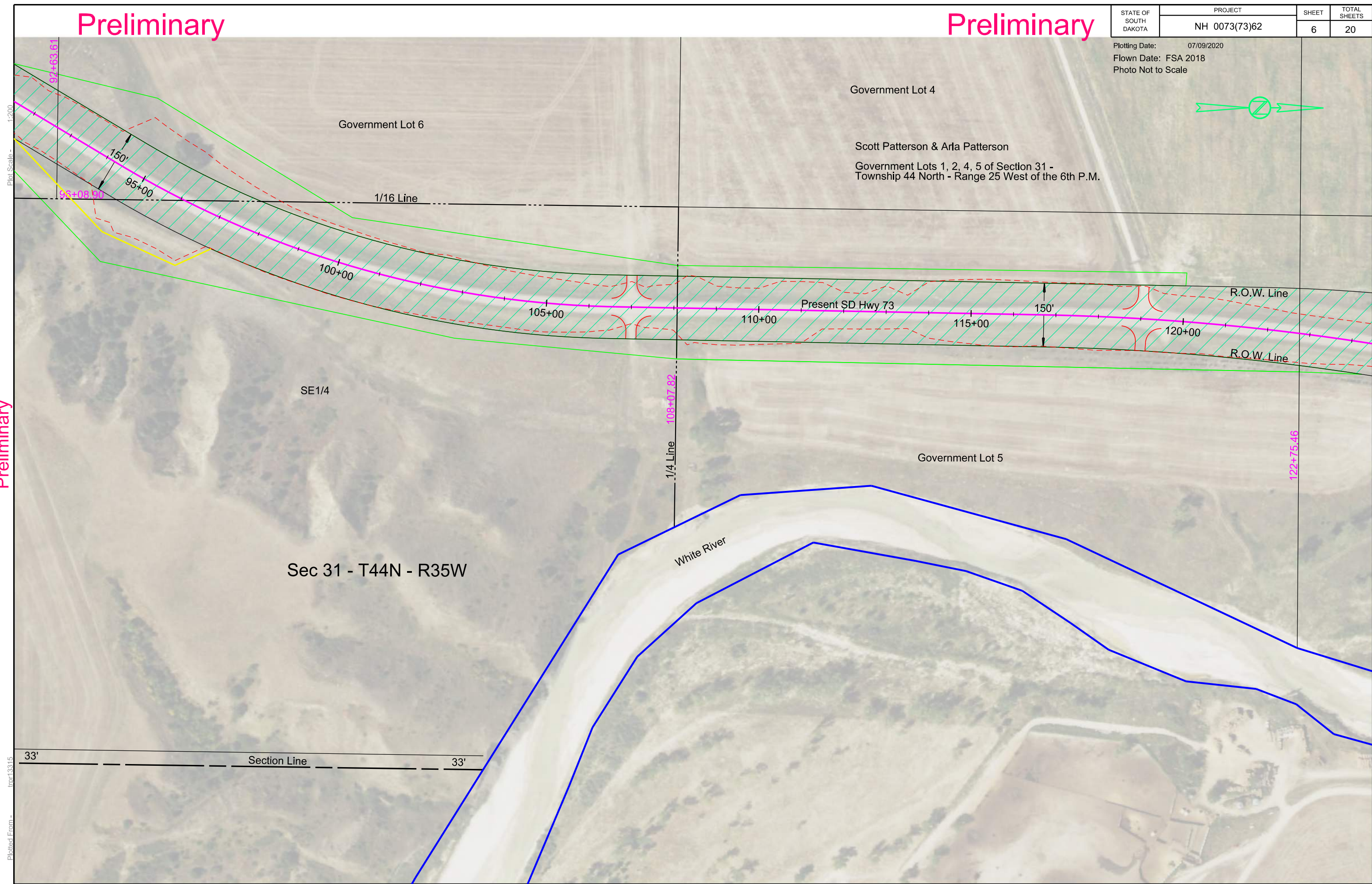
Plotting Date: 07/09/2020
 Flown Date: FSA 2018
 Photo Not to Scale



Plot Scale - 1:200

Preliminary

Plotted From - trp13315



Preliminary

Preliminary

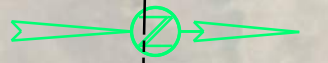
File - U:\trp\proj\jack\05HV\0506row.dgn

Preliminary

Preliminary

STATE OF SOUTH DAKOTA	PROJECT	SHEET	TOTAL SHEETS
	NH 0073(73)62	7	20

Plotting Date: 07/09/2020
 Flown Date: FSA 2018
 Photo Not to Scale



Sec 31 - T44N - R35W

Sec 30 - T3S - R22E

Government Lot 2

Government Lot 6

William C. Slovek & Pennie Slovek

That portion of Government Lot 7 of Section 30 - Township 3 South - Range 22 East of the B.H.M., lying west of Highway 73 right of way

Government Lot 7

Scott Patterson & Arla Patterson

Government Lots 1, 2, 4, 5 of Section 31 - Township 44 North - Range 35 West of the 6th P.M., except SD Highway 73 right of way

Government Lot 1

Government Lot 8

Thad Stout & Penny Stout

Government Lot 8 in Section 30 - Township 3 South - Range 22 East of the B.H.M.

Christopher Uhlir & Jo Beth Eisenbraun

That portion of Government Lot 7 of Section 30 - Township 3 South - Range 22 East of the B.H.M., lying east of Highway 73 right of way

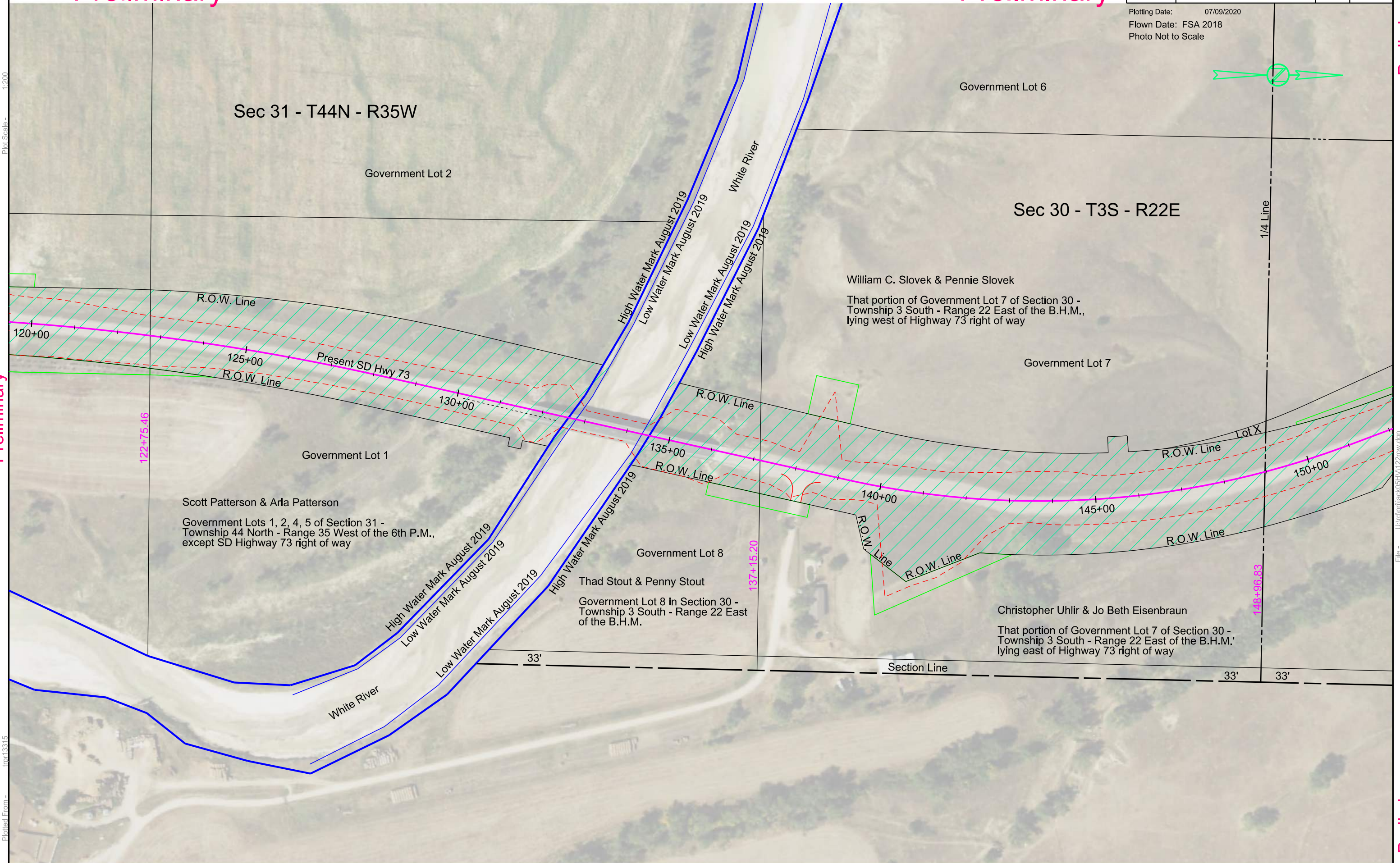
Plot Scale - 1:200

Preliminary

Plotted From - trp13315

File - U:\trp\proj\jack\05HV1122row.dgn

Preliminary



122+75.46

137+15.20

148+96.83

33'

33'

33'

Section Line

1/4 Line

Lot X

150+00

145+00

140+00

135+00

130+00

125+00

120+00

White River

White River

R.O.W. Line

R.O.W. Line

R.O.W. Line

R.O.W. Line

R.O.W. Line

R.O.W. Line

R.O.W. Line

R.O.W. Line

High Water Mark August 2019

Low Water Mark August 2019

High Water Mark August 2019

Low Water Mark August 2019

High Water Mark August 2019

Low Water Mark August 2019

High Water Mark August 2019

Low Water Mark August 2019

High Water Mark August 2019

Low Water Mark August 2019

High Water Mark August 2019

Low Water Mark August 2019

High Water Mark August 2019

Low Water Mark August 2019

High Water Mark August 2019

Low Water Mark August 2019

White River

White River

White River

White River

White River

White River

White River

White River

White River

White River

White River

White River

White River

White River

White River

White River

White River

White River

White River

White River

White River

White River

White River

White River

White River

White River

White River

White River

White River

White River

White River

White River

White River

White River

White River

White River

White River

White River

White River

White River

White River

White River

White River

White River

White River

White River

White River

White River

White River

White River

White River

White River

White River

White River

White River

White River

White River

White River

White River

White River

White River

White River

White River

White River

White River

White River

White River

White River

White River

White River

White River

White River

White River

White River

White River

White River

White River

White River

White River

White River

White River

White River

White River

White River

White River

White River

White River

White River

White River

White River

White River

White River

White River

White River

White River

White River

White River

White River

White River

White River

White River

White River

White River

White River

White River

White River

White River

White River

White River

White River

White River

White River

White River

White River

White River

White River

White River

White River

White River

White River

White River

White River

White River

White River

White River

White River

White River

White River

White River

White River

White River

White River

White River

White River

White River

White River

White River

White River

White River

White River

White River

White River

White River

White River

White River

White River

White River

White River

White River

White River

White River

White River

White River

White River

White River

White River

White River

White River

White River

White River

White River

White River

White River

White River

White River

White River

White River

White River

White River

White River

White River

White River

White River

White River

White River

White River

White River

White River

White River

White River

White River

White River

White River

White River

White River

White River

White River

White River

White River

White River

White River

White River

White River

White River

White River

White River

White River

White River

White River

White River

White River

White River

White River

White River

White River

White River

White River

White River

White River

White River

White River

White River

White River

White River

White River

White River

White River

White River

White River

White River

White River

White River

White River

White River

White River

White River

White River

White River

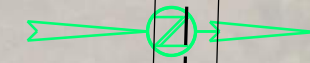
White River

Preliminary

Preliminary

STATE OF SOUTH DAKOTA	PROJECT	SHEET	TOTAL SHEETS
	NH 0073(73)62		

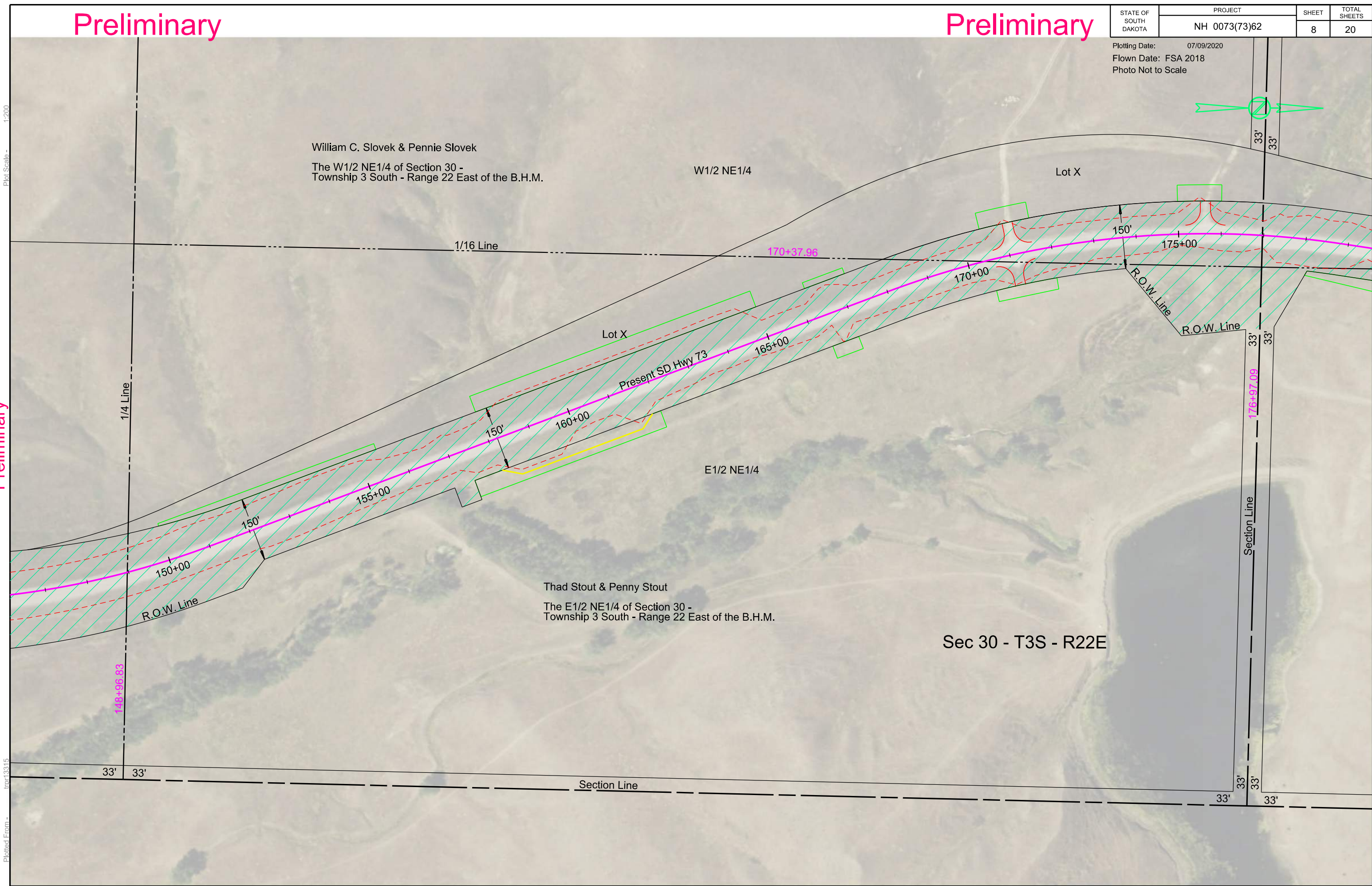
Plotting Date: 07/09/2020
 Flown Date: FSA 2018
 Photo Not to Scale



Plot Scale - 1:200

Preliminary

Plotted From - trp-13315



Preliminary

Preliminary

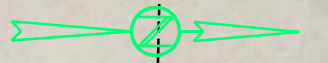
File - U:\trp\proj\jack05HV\148row.dgn

Preliminary

Preliminary

STATE OF SOUTH DAKOTA	PROJECT	SHEET	TOTAL SHEETS
	NH 0073(73)62		

Plotting Date: 07/09/2020
 Flown Date: FSA 2018
 Photo Not to Scale



Sec 19 - T3S - R22E

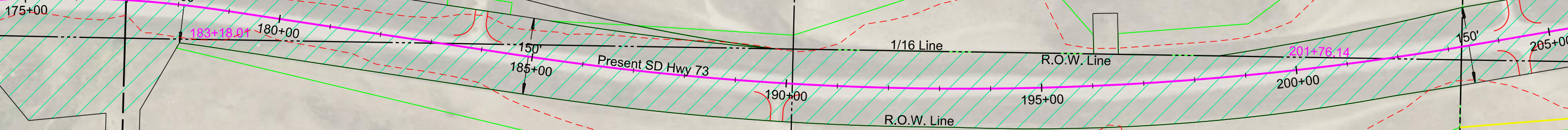
Mitchell-Slovek River Ranch, LLLP
 That portion of the SE1/4 of Section 19 - Township 3 South -
 Range 22 East of the B.H.M., lying west of SD Highway 73 right of way

SW1/4 SE1/4

NW1/4 SE1/4

Lot H3

Lot X



SE1/4 SE1/4

NE1/4 SE1/4

Thad Stout & Penny Stout
 The SE1/4 SE1/4 and the NE1/4 SE1/4 of
 Section 19 - Township 3 South - Range 22 East of the B.H.M.

33' 33'
 Section Line
 33' 33'
 33' 33'
 33' 33'
 176+97.09
 33' 33'

1/4 Line
 150'
 201+76.14
 203+26.46
 150'

1/16 Line
 150'
 185+00
 190+11.86
 190+00

Plot Scale - 1:200

Preliminary

Plotted From - tpr13315

Preliminary

File - U:\tr\proj\jack\05HV176row.dgn

Preliminary

Preliminary

Preliminary

STATE OF SOUTH DAKOTA	PROJECT	SHEET	TOTAL SHEETS
	NH 0073(73)62		

Plotting Date: 07/09/2020
 Flown Date: FSA 2018
 Photo Not to Scale

Plot Scale - 1:200

Plotted From - trpr13315

Preliminary

Preliminary

Sec 19 - T3S - R22E

Mitchell-Slovak River Ranch, LLLP
 That portion of the W1/2 NE1/4 of Section 19 - Township 3 South - Range 22 East of the B.H.M., lying west of SD Highway 73 right of way

W1/2 NE1/4

E1/2 NE1/4

Thad Stout & Penny Stout
 The W1/2 NE1/4 lying east of SD Highway 73 and the E1/2 NE1/4 of Section 19 - Township 3 South - Range 22 East of the B.H.M.

Present SD Hwy 73

1/4 Line

1/4 Line

1/16 Line

Section Line

229+96.69

203+26.46

150'

205+00

210+00

215+00

220+00

225+00

230+00

150'

33'

33'

33'

33'

33'

33'



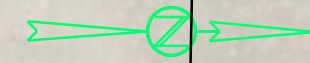
File - U:\trpr\jacob\514\203row.dgn

Preliminary

Preliminary

STATE OF SOUTH DAKOTA	PROJECT	SHEET	TOTAL SHEETS
	NH 0073(73)62	11	20

Plotting Date: 07/09/2020
 Flown Date: FSA 2018
 Photo Not to Scale



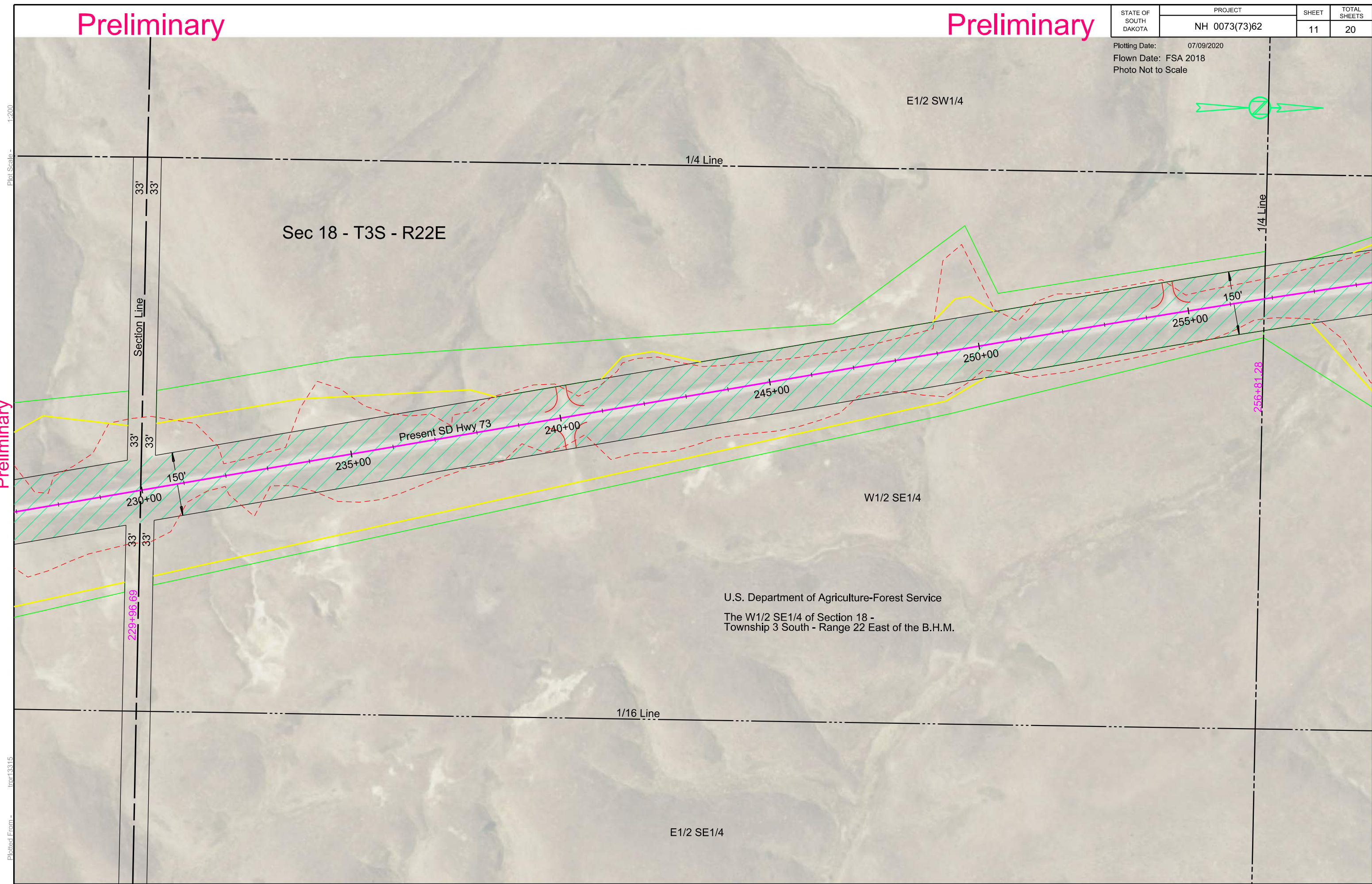
Plot Scale - 1:200

Preliminary

Plotted From - tpr13315

File - U:\trp\proj\jack\0514\1229row.dgn

Preliminary



E1/2 SW1/4

1/4 Line

Sec 18 - T3S - R22E

Section Line

33'

33'

229+96.69

33'

33'

150'

235+00

240+00

245+00

250+00

255+00

150'

256+81.28

W1/2 SE1/4

1/16 Line

E1/2 SE1/4

U.S. Department of Agriculture-Forest Service
 The W1/2 SE1/4 of Section 18 -
 Township 3 South - Range 22 East of the B.H.M.

Preliminary

Preliminary

STATE OF SOUTH DAKOTA	PROJECT	SHEET	TOTAL SHEETS
	NH 0073(73)62		

Plotting Date: 07/09/2020
 Flown Date: FSA 2018
 Photo Not to Scale

Plot Scale - 1:200

Preliminary

Plotted From - trp13315

Preliminary

File - U:\trp\proj\jack0514\256row.dgn

Preliminary

Sec 18 - T3S - R22E

U.S. Department of Agriculture-Forest Service
 The E1/2 NW1/4 of Section 18 -
 Township 3 South - Range 22 East of the B.H.M.

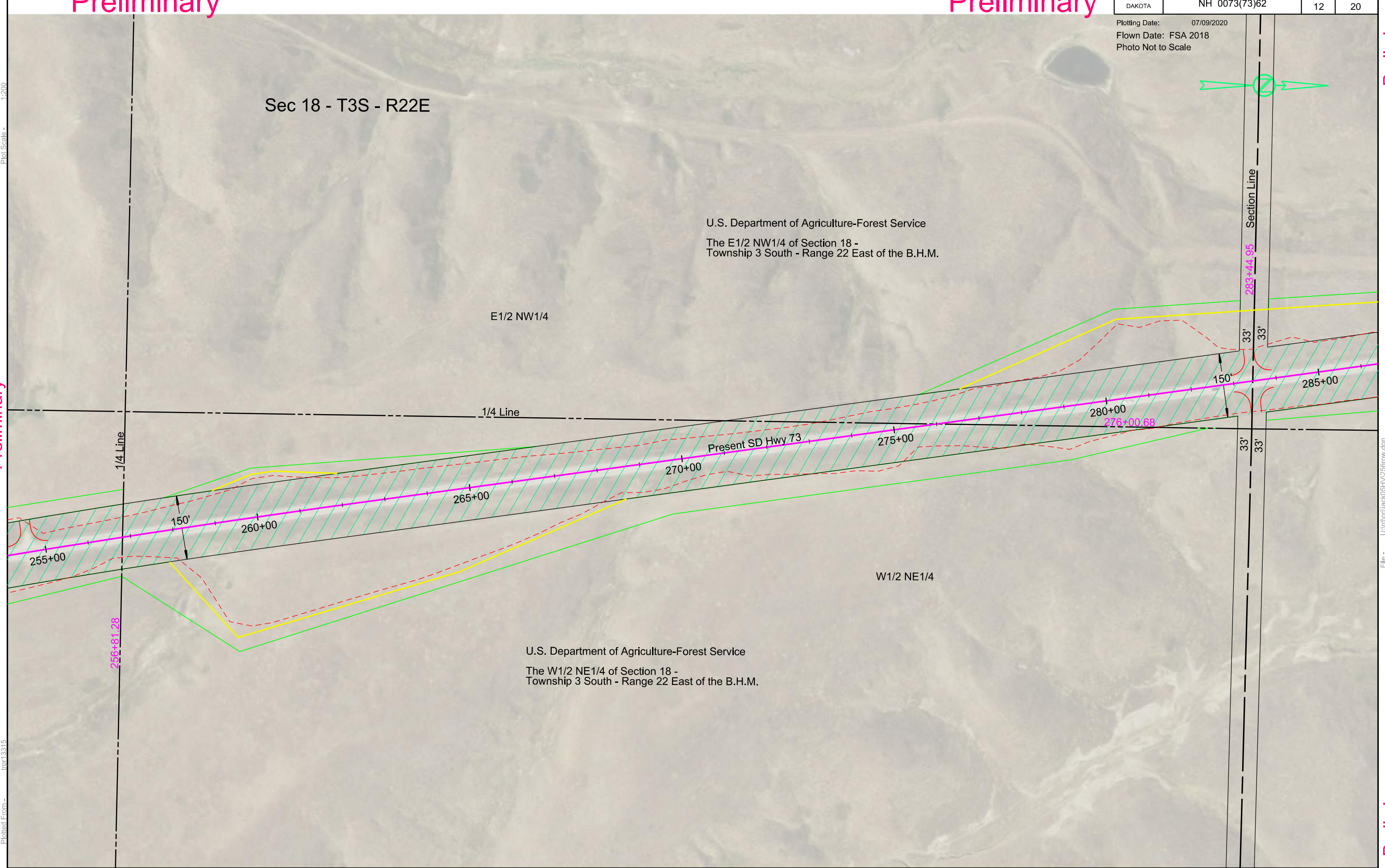
E1/2 NW1/4

1/4 Line

Present SD Hwy 73

W1/2 NE1/4

U.S. Department of Agriculture-Forest Service
 The W1/2 NE1/4 of Section 18 -
 Township 3 South - Range 22 East of the B.H.M.



Section Line

283+44.95

33'

33'

150'

280+00

276+00.68

33'

33'

1/4 Line

256+81.28

150'

260+00

265+00

270+00

275+00

280+00

285+00

Preliminary

Preliminary

STATE OF SOUTH DAKOTA	PROJECT	SHEET	TOTAL SHEETS
	NH 0073(73)62		

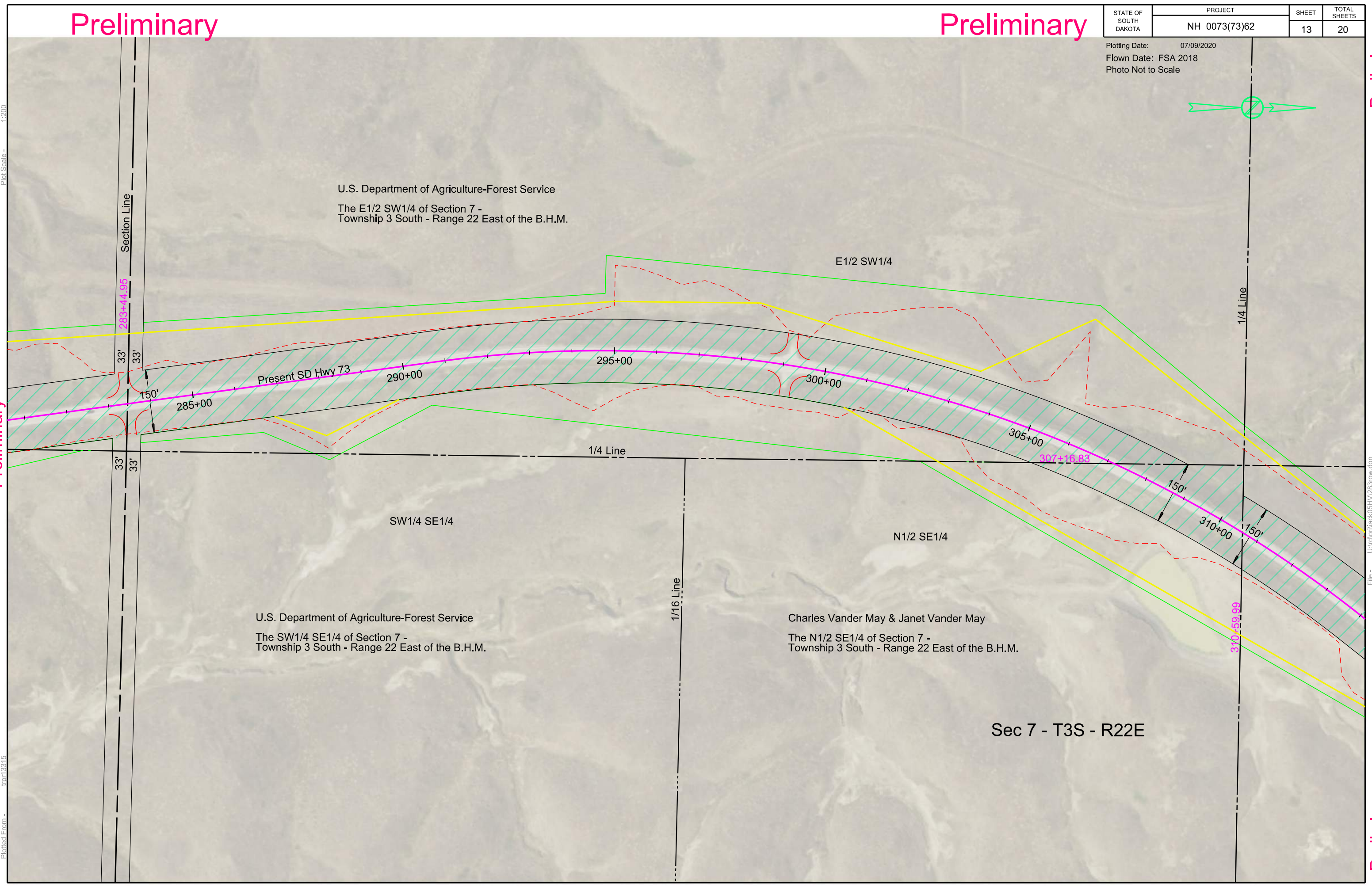
Plotting Date: 07/09/2020
 Flown Date: FSA 2018
 Photo Not to Scale



Plot Scale - 1:200

Preliminary

Plotted From - tpr13315



Preliminary

File - U:\trp\jjaack05HV\283row.dgn

Preliminary

Preliminary

Preliminary

STATE OF SOUTH DAKOTA	PROJECT	SHEET	TOTAL SHEETS
	NH 0073(73)62	14	20

Plotting Date: 07/09/2020
 Flown Date: FSA 2018
 Photo Not to Scale



Plot Scale - 1:200

Preliminary

Plotted From - trp13315

1/4 Line

1/4 Line

310+00

310+59.99

315+00

Present SD Hwy 73

320+00

W1/2 NE1/4

Thad Stout & Penny Stout

That portion of the W1/2 NE1/4 lying north and west of SD Highway 73 as the same is now situate, Section 7 - Township 3 South - Range 22 East of the B.H.M.

Sec 7 - T3S - R22E

Charles Vander May & Janet Vander May

That portion of the W1/2 NE1/4 lying south and east of SD Highway 73 in Section 7 - Township 3 South - Range 22 East of the B.H.M.

1/16 Line

325+00

330+00

329+84.29

33'

33'

Section Line

33'

33'

Preliminary

Preliminary

File - U:\trp\proj\jack\05HV\310row.dgn

Preliminary

Preliminary

STATE OF SOUTH DAKOTA	PROJECT	SHEET	TOTAL SHEETS
	NH 0073(73)62	15	20

Plotting Date: 07/09/2020
 Flown Date: FSA 2018
 Photo Not to Scale

Plot Scale - 1:200

Preliminary

Plotted From - trpr13315

Preliminary

File - U:\trpr\proj\jack\05HV\329row.dgn

Preliminary

W1/2 NE1/4

Sec 7 - T3S - R22E

E1/2 NE1/4

U.S. Department of Agriculture-Forest Service
 The E1/2 NE1/4 of Section 7 -
 Township 3 South - Range 22 East of the B.H.M.

1/16 Line

1/16 Line

Section Line

Section Line

33'

33'

33'

33'

33'

33'

325+00

150'

330+00

329+84.29

335+00

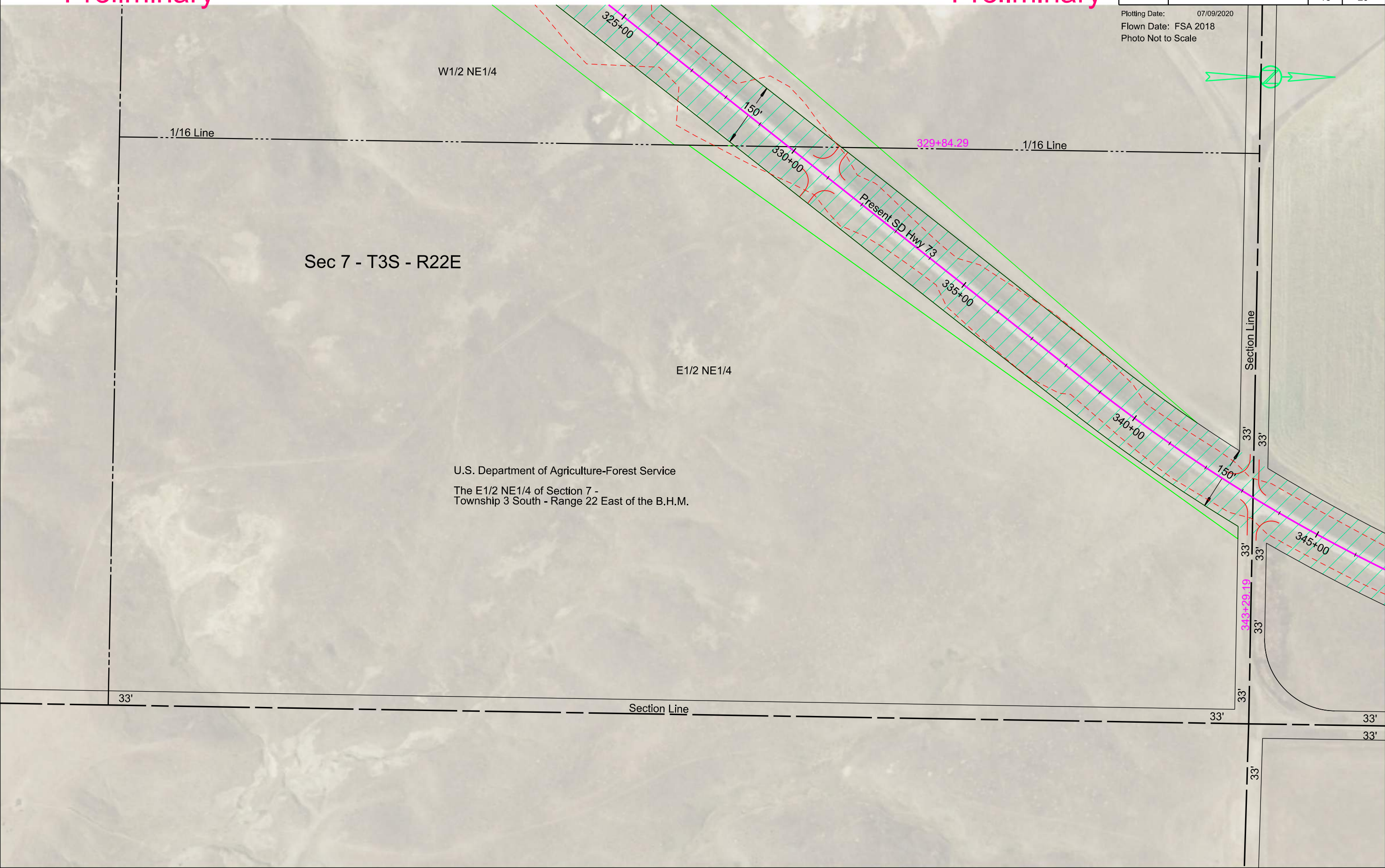
340+00

150'

343+29.19

345+00

Present SD Hwy 73

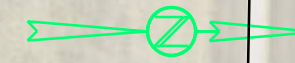


Preliminary

Preliminary

STATE OF SOUTH DAKOTA	PROJECT	SHEET	TOTAL SHEETS
	NH 0073(73)62	16	20

Plotting Date: 07/09/2020
Flown Date: FSA 2018
Photo Not to Scale



Plot Scale - 1:200

Preliminary

Plotted From - tpr13315

Sec 6 - T3S - R22E

Mitchell-Slovek River Ranch, LLLP
The SE1/4, except Railroad Right-of-way therein, of Section 6 - Township 3 South - Range 22 East of the B.H.M.

SE1/4

White River Road

Cutoff

Section Line

Present SD Hwy 73

SW1/4

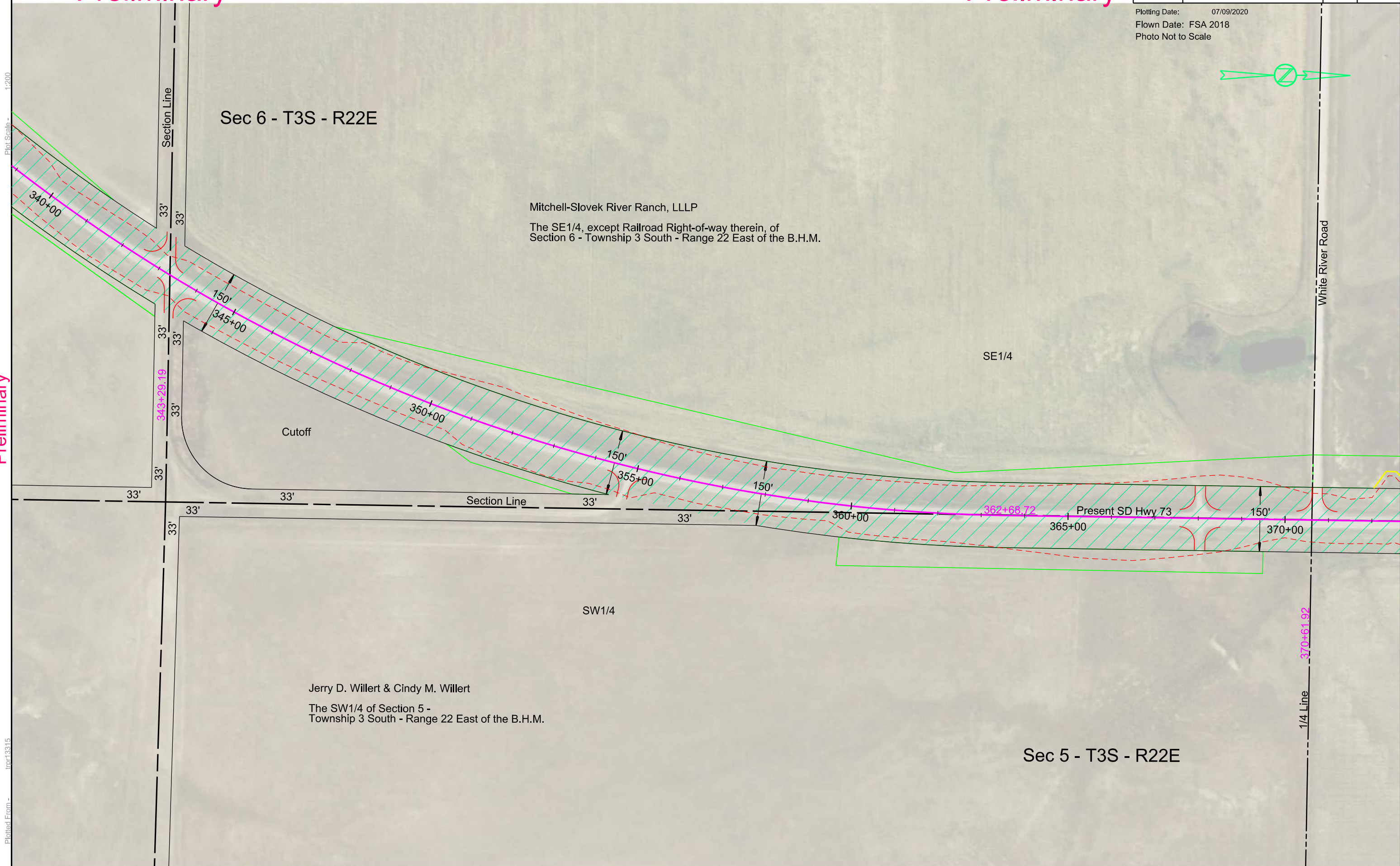
Jerry D. Willert & Cindy M. Willert
The SW1/4 of Section 5 - Township 3 South - Range 22 East of the B.H.M.

Sec 5 - T3S - R22E

1/4 Line

File - U:\trp\proj\jack051v\31313row.dgn

Preliminary

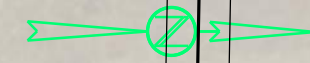


Preliminary

Preliminary

STATE OF SOUTH DAKOTA	PROJECT	SHEET	TOTAL SHEETS
	NH 0073(73)62	17	20

Plotting Date: 07/09/2020
 Flown Date: FSA 2018
 Photo Not to Scale



Sec 6 - T3S - R22E

Jerry D. Willert & Cindy M. Willert
 The S1/2 NE1/4 and the N1/2 NE1/4 of
 Section 6 - Township 3 South - Range 22 East of the B.H.M.

NE1/4

1/4 Line
 White River Road

Section Line
 33'
 33'

370+00 150' 375+00 380+00 Section Line 385+00 390+00 Present SD Hwy 73 395+00 150'

370+61.92

Pine Street
 33'
 397+01.63
 33'

W1/2 NW1/4

James and Fayola Mansfield Living Trust
 The W1/2 NW1/4 of Section 5 -
 Township 3 South - Range 22 East of the B.H.M.

Sec 5 - T3S - R22E

Plot Scale - 1:200

Preliminary

trpr13315

Plotted From -

Preliminary

File - U:\trpr\jjaack\05HV\370row.dgn

Preliminary

Preliminary

Preliminary

STATE OF SOUTH DAKOTA	PROJECT	SHEET	TOTAL SHEETS
	NH 0073(73)62		

Plotting Date: 07/09/2020
 Flown Date: FSA 2018
 Photo Not to Scale

Plot Scale - 1:200

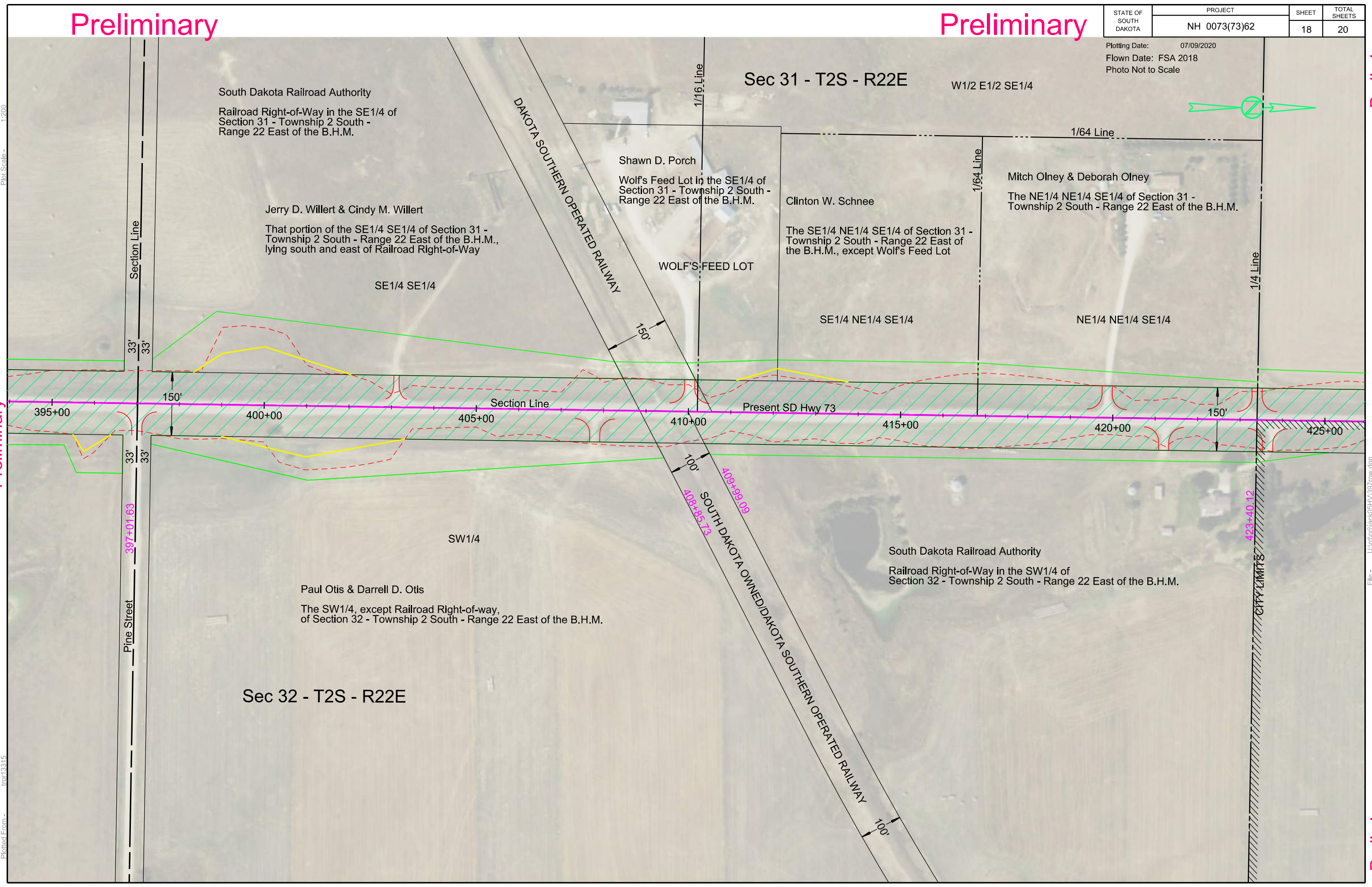
Preliminary

Plotted From - trpr13315

Preliminary

File - U:\trpr\proj\jack\05HV\397row.dgn

Preliminary



South Dakota Railroad Authority
 Railroad Right-of-Way in the SE1/4 of
 Section 31 - Township 2 South -
 Range 22 East of the B.H.M.

Jerry D. Willert & Cindy M. Willert
 That portion of the SE1/4 SE1/4 of Section 31 -
 Township 2 South - Range 22 East of the B.H.M.,
 lying south and east of Railroad Right-of-Way

Sec 31 - T2S - R22E
 W1/2 E1/2 SE1/4

Shawn D. Porch
 Wolf's Feed Lot in the SE1/4 of
 Section 31 - Township 2 South -
 Range 22 East of the B.H.M.

Mitch Olney & Deborah Olney
 The NE1/4 NE1/4 SE1/4 of Section 31 -
 Township 2 South - Range 22 East of the B.H.M.

Clinton W. Schnee
 The SE1/4 NE1/4 SE1/4 of Section 31 -
 Township 2 South - Range 22 East of
 the B.H.M., except Wolf's Feed Lot

SE1/4 SE1/4

WOLF'S FEED LOT

SE1/4 NE1/4 SE1/4

NE1/4 NE1/4 SE1/4

SW1/4

Paul Otis & Darrell D. Otis
 The SW1/4, except Railroad Right-of-way,
 of Section 32 - Township 2 South - Range 22 East of the B.H.M.

South Dakota Railroad Authority
 Railroad Right-of-Way in the SW1/4 of
 Section 32 - Township 2 South - Range 22 East of the B.H.M.

Sec 32 - T2S - R22E

Section Line

Pine Street

Section Line

Present SD Hwy 73

CITY LIMITS

395+00 400+00 405+00 410+00 415+00 420+00 425+00

409+99.09
 408+85.73
 SOUTH DAKOTA OWNED/DAKOTA SOUTHERN OPERATED RAILWAY

33'

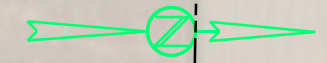
33'

150'

150'

100'

100'



Preliminary

Preliminary

STATE OF SOUTH DAKOTA	PROJECT	SHEET	TOTAL SHEETS
	NH 0073(73)62		

Plotting Date: 07/09/2020
 Flown Date: FSA 2018
 Photo Not to Scale

Sec 31 - T2S - R22E

Clinton W. Schnee
 The NE1/4 of Section 31 - Township 2 South - Range 22 East of the B.H.M., except a 3/4 acre residence in the NE1/4 and except Tracts 1 and 2 of Schnee's First Addition in the NE1/4 NE1/4 and except Porch's Tract 1, a subdivision of a portion of Lot 2 and all Lot 1 of Schee's First Addition to Kadoka and a Subdivision of the NE1/4 NE1/4 and except Tracts A, B, C, D and E of the NE1/4 NE1/4 NE1/4 and except Tower Tract, a portion of Sschnee's First Addition to Kadoka and except Schnee's 2nd Addition to Kadoka and except Schnee's 1st Addiiton to Kadoka

Theodore L. Hicks & Arlene J. Hicks
 Lots 1 through 5 of Schnee's First Addition, Block 1 and Block 2 of Schnee's 2nd Addition and Tracts A, B, C, D & E in the NE1/4 NE1/4 of Section 31 - Township 2 South - Range 22 East of the B.H.M., Kadoka

Verda Anderson
 Block 3 of Schnee's 2nd Addition to Kadoka

Theodore L. Hicks & Arlene J. Hicks
 Tract 2 of Schnee's First Addition in the NE1/4 NE1/4 of Section 31 - Township 2 South - Range 22 East of the B.H.M.

SCHNEE'S FIRST ADDITION

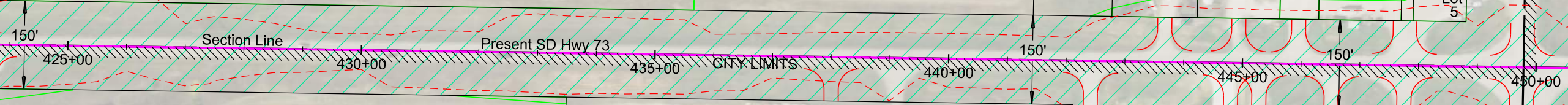
SCHNEE'S 2ND ADDITION

SCHNEE'S 2ND ADDITION

SCHNEE'S FIRST ADDITION
 Lot 1
 Lot 2
 Lot 3
 Lot 4
 Lot 5

1/4 Line

NE1/4



Preliminary

W1/2 NW1/4

Paul Otis & Darrell D. Otis
 The W1/2 NW1/4, except N1/2 NW1/4 NW1/4 and except Lot S, of Section 32 - Township 2 South - Range 22 East of the B.H.M.

State of South Dakota (Department of Transportation)
 Lot S in the NW1/4 of Section 32 - Township 2 South - Range 22 East of the B.H.M.

66' Poplar Street

Lot B Lot A HANDCOCK 1ST ADDITION

Nibble Nook Drive

Lot C Lot D

KADOKA

Sec 32 - T2S - R22E

Kadoka 19479, LLC
 Lot B of Hancock 1st Addition in the NW1/4 NW1/4 of Section 32 - Township 2 South - Range 22 East of the B.H.M.

Kevin Wenzel & Scott Wenzel
 Lots A and D of Hancock 1st Addition in the NW1/4 NW1/4 of Section 32 - Township 2 South - Range 22 East of the B.H.M.

Section Line 449+78.66

Maple Street 33'

Preliminary

Preliminary

Plot Scale - 1:200

Plotted From - trp13315

File - U:\trp\proj\ack05\HV4\23row.dgn

Preliminary

Preliminary

STATE OF SOUTH DAKOTA	PROJECT NH 0073(73)62	SHEET 20	TOTAL SHEETS 20
-----------------------	--------------------------	-------------	--------------------

Plotting Date: 07/09/2020
 Flown Date: FSA 2018
 Photo Not to Scale

Plot Scale - 1:200

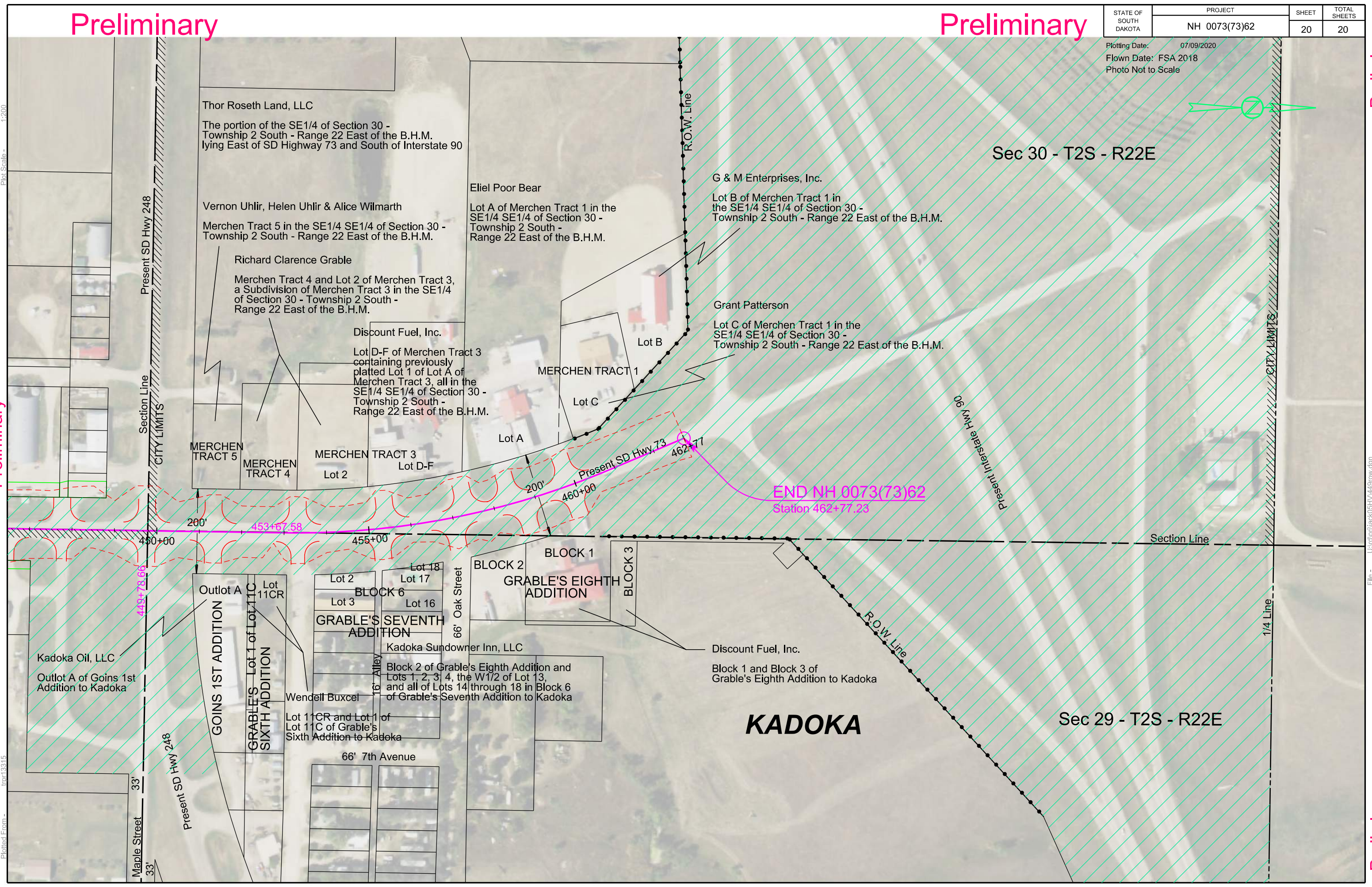
Preliminary

Plotted From - trp13315

Preliminary

File - U:\trp\jacob\0514\449row.dgn

Preliminary



Thor Roseth Land, LLC
 The portion of the SE1/4 of Section 30 -
 Township 2 South - Range 22 East of the B.H.M.
 lying East of SD Highway 73 and South of Interstate 90

Vernon Uhler, Helen Uhler & Alice Wilmarth
 Merchen Tract 5 in the SE1/4 SE1/4 of Section 30 -
 Township 2 South - Range 22 East of the B.H.M.

Richard Clarence Grable
 Merchen Tract 4 and Lot 2 of Merchen Tract 3,
 a Subdivision of Merchen Tract 3 in the SE1/4
 of Section 30 - Township 2 South -
 Range 22 East of the B.H.M.

Discount Fuel, Inc.
 Lot D-F of Merchen Tract 3
 containing previously
 platted Lot 1 of Lot A of
 Merchen Tract 3, all in the
 SE1/4 SE1/4 of Section 30 -
 Township 2 South -
 Range 22 East of the B.H.M.

Eliel Poor Bear
 Lot A of Merchen Tract 1 in the
 SE1/4 SE1/4 of Section 30 -
 Township 2 South -
 Range 22 East of the B.H.M.

G & M Enterprises, Inc.
 Lot B of Merchen Tract 1 in
 the SE1/4 SE1/4 of Section 30 -
 Township 2 South - Range 22 East of the B.H.M.

Grant Patterson
 Lot C of Merchen Tract 1 in the
 SE1/4 SE1/4 of Section 30 -
 Township 2 South - Range 22 East of the B.H.M.

MERCHEN TRACT 5
 MERCHEN TRACT 4
 MERCHEN TRACT 3
 Lot 2
 Lot D-F

MERCHEN TRACT 1
 Lot A
 Lot B
 Lot C

Outlot A
 Lot 11CR
 GOINS 1ST ADDITION
 GRABLE'S Lot 1 of Lot 11C
 SIXTH ADDITION
 Lot 2
 Lot 3
 BLOCK 6
 Lot 17
 Lot 16
 GRABLE'S SEVENTH
 ADDITION
 Kadoka Sundowner Inn, LLC
 Block 2 of Grable's Eighth Addition and
 Lots 1, 2, 3, 4, the W1/2 of Lot 13,
 and all of Lots 14 through 18 in Block 6
 of Grable's Seventh Addition to Kadoka
 Wendell Buxcel
 Lot 11CR and Lot 1 of
 Lot 11C of Grable's
 Sixth Addition to Kadoka
 66' 7th Avenue

BLOCK 1
 BLOCK 2
 GRABLE'S EIGHTH
 ADDITION
 BLOCK 3

Discount Fuel, Inc.
 Block 1 and Block 3 of
 Grable's Eighth Addition to Kadoka

KADOKA

Sec 29 - T2S - R22E

Sec 30 - T2S - R22E

END NH 0073(73)62
 Station 462+77.23

Present SD Hwy 248

Maple Street 33'

Present SD Hwy 248

Section Line

CITY LIMITS

R.O.W. Line

R.O.W. Line

Present Interstate Hwy 90

CITY LIMITS

1/4 Line

Section Line