

## Public Meeting

### US 12 Bridge Replacement, SD1806 Intersection Realignment, and Grand River Casino Entrance Relocation

NH 0012(197)183 & P 1806(18)363  
**PCN 04XF & PCN 05M9**

Karen K. Olson, PE  
Road Design Engineering Supervisor  
January 15, 2019



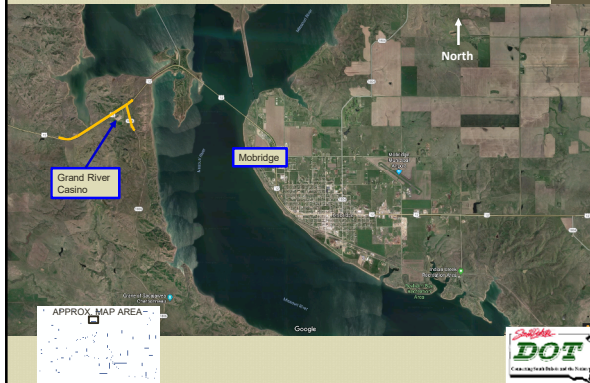
## Purpose of the Meeting

Involve the public in the planning and design process

- Provide a Project Overview
  - Background Information
  - Proposed Project
  - Project Schedule
- Gather Input and Comments

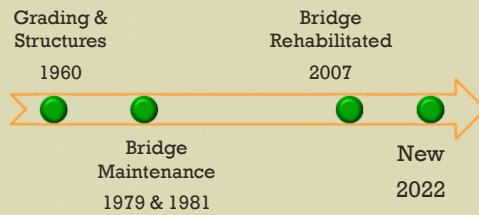


## Project Limits



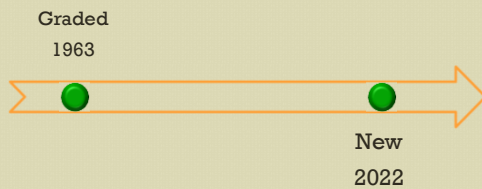
## Background Information

US12



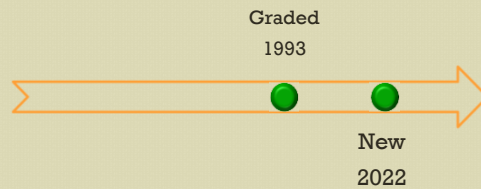
## Background Information

SD1806



## Background Information

Grand River Casino Entrance



## Traffic

### US12

- 2017 Average Daily Traffic (ADT) = 1,400
- 2037 Projected ADT = 1,900
- 15% Trucks

### SD1806

- 2017 ADT = 120
- 2037 Projected ADT = 170
- 11% Trucks



## Crash History

### US12

#### ➤ 4 Years (2012 to 2016)

- 14 Reported Crashes
  - 2 Fatalities
  - 2 at intersections
  - 2 at bridge
- Crash Rate = 3.65

Statewide Crash Rate Rural Principal Arterial = 1.56  
(crashes per million vehicle miles of travel)



## Crash History

### SD1806

#### ➤ 4 Year Period from 2012 to 2016

- 0 Reported Crashes
- Crash Rate = 0.00

Statewide Crash Rate Rural Major Collector = 2.37



## Highway Deficiencies

### US12 Bridge

- Beyond Useful Design Life
- Narrow Shoulders
- Horizontal Curve Sharper than Current Standards



## Highway Deficiencies

### US12 Intersections

#### SD1806 & Grand River Casino Entrance

- Insufficient Sight Distance
- Vertical Grades Steeper than Current Standards



## Proposed Improvements

### US12 Bridge

- Replace with box culvert south of current bridge
- Flatten the horizontal curve west of the structure



# Proposed Improvements

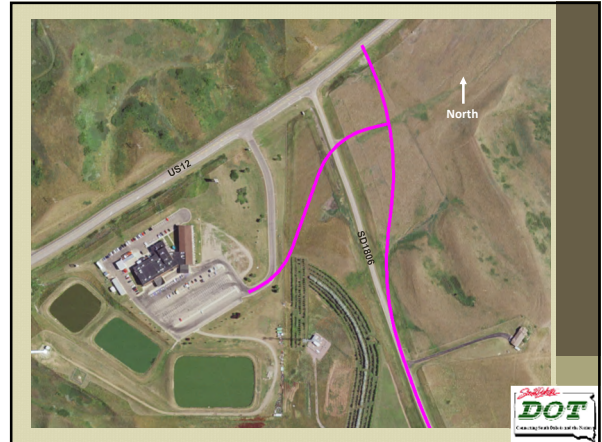
## US12 Intersections

### SD1806

- Move farther downhill to gain sight distance

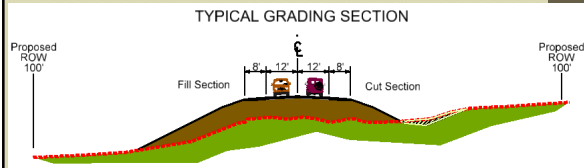
### Grand River Casino Entrance

- Relocate the entrance to SD1806
  - Minimize confusion and reduce accident potential with fewer conflict points on US12



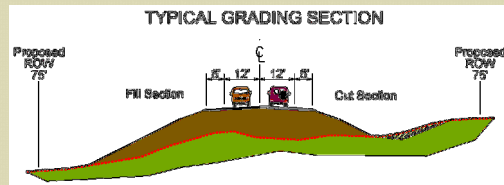
# Proposed Typical Section

## US12 at structure



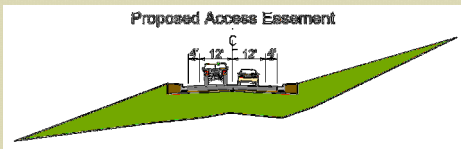
# Proposed Typical Section

## SD1806 realignment



# Proposed Typical Section

## Grand River Casino Entrance



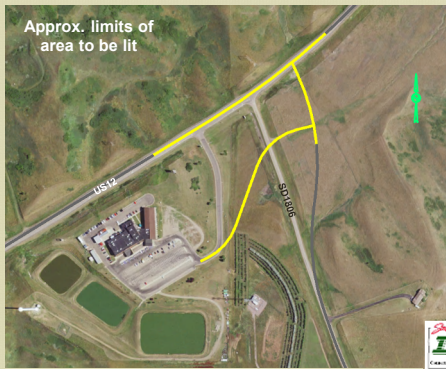
# Intersection Layout



Example of a similar offset right turn lane



## Lighting



## Access Management

- To provide safe, efficient access to streets and highways
- Limit number of direct accesses to major roadways
- Minor changes expected with this project

See Handout



## Encroachments

### Private Property within the Public ROW

- Federal Highway Regulations
- Safety

### Examples:

- Signs and Awnings
- Private Use (Parking)
- Landscaping Items

*Encroachments survey is being conducted*



## Utility Coordination

- **Some Utilities** may need to be relocated
- **Utility Companies** may negotiate easements with landowners if needed
- **Utility Companies:**



- West River Telecommunications
- Moreau Grand Electric
- Standing Rock Sioux Rural Water System

See Handout



## Utility Coordination

### ➤ Any Known Private Utilities?

- Waterlines
- Drainfields
- Septic Tanks
- Underground Storage Tanks
- Underground Power Lines

### ➤ SDDOT Utility Contact

Bronson Blow (605)773-4097



## Environmental, Social & Economic Concerns

- National Environmental Policy Act (1969)
  - Social
  - Economic
  - Public Involvement
  - Environmental
    - Section 4(f)
    - Section 106
    - **Wetlands**
    - Threatened/Endangered Species
    - Contaminated Materials

See Handout



## Environmental, Social & Economic Concerns

- Cultural resources survey will be conducted
- Impact to wetlands is being investigated
- Endangered and Threatened Species:
  - Birds: Whooping Crane, Piping Plover, Least Tern, Rufa Red Knot
  - Mammals: Northern Long-Eared Bat, Black-Footed Ferret
  - Fish: Pallid Sturgeon

See Handout



## Construction Traffic Control

### Traffic maintained at reduced speeds

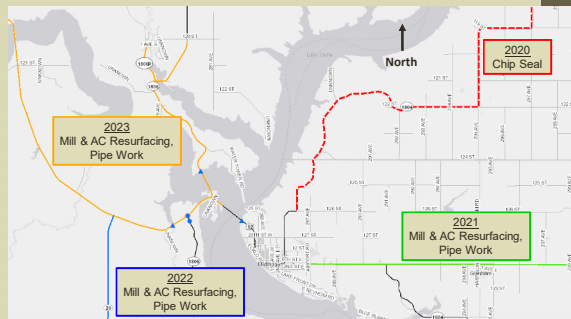
- New alignments built
- Traffic moved to new alignments
- Existing alignments obliterated



See Handout



## Other Projects in the Area



## Tentative Project Schedule

Dependent on Federal Funding

<b>Final Design:</b>	<b>2019</b>
<b>ROW Acquisition Process:</b>	<b>2020</b>
<b>Construction:</b>	<b>Summer 2022</b>
<b>Estimated Cost:</b>	<b>\$2.73 million</b>



## Questions or Comments

Send by **January 29, 2019** to:

Karen Olson  
 South Dakota Department of Transportation  
 Office of Road Design  
 700 E Broadway  
 Pierre SD, 57501  
[Karen.Olson@state.sd.us](mailto:Karen.Olson@state.sd.us)

Public Meeting Information available at:  
<http://sddot.com/dot/publicmeetings/default.aspx>



## Meeting Opinions

Please fill out the survey at the back of the project information packet

OR online at this address:

<http://www.surveymonkey.com/r/SDDOT-Public-Meeting-Survey>

OR follow this link:



Thank you!

