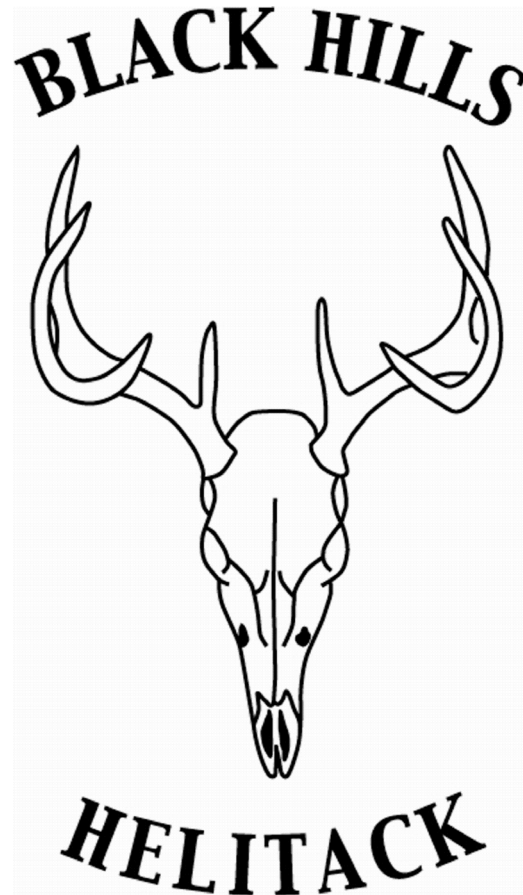


# *BLACK HILLS NATIONAL FOREST AVIATION MGT. PROGRAM*



# Black Hills Helitack

## BLACK HILLS HELITACK BASE

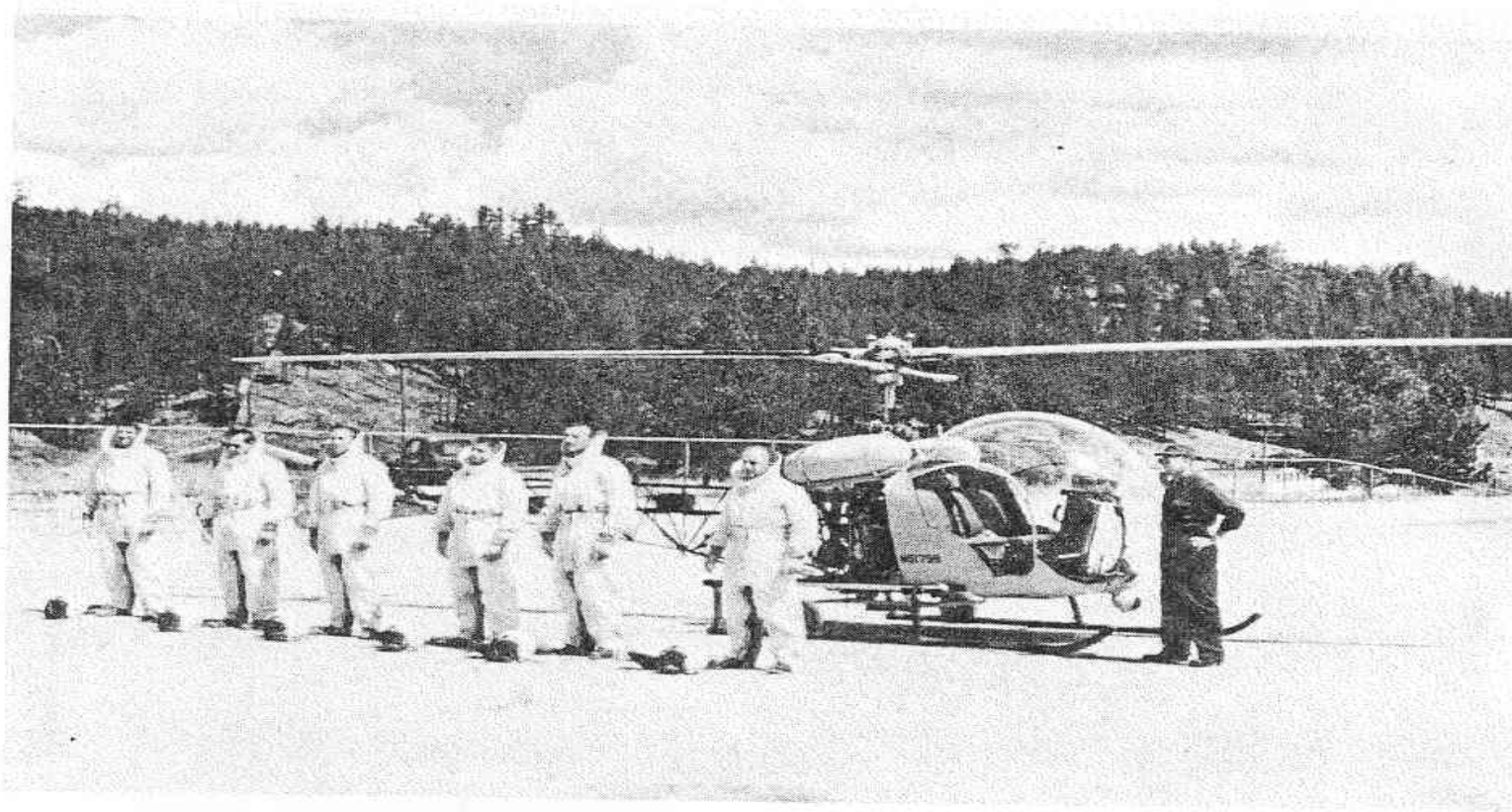
HELITACK IS A COINED WORD DERIVED FROM "HELICOPTER" AND "ATTACK." THIS BASE IS THE HEADQUARTERS FOR A HELICOPTER AND FIVE MAN CREW WHOSE MISSION IS TO ATTACK FOREST FIRES BEFORE THEY GET BIG.

THE HELICOPTER IS ALSO EMPLOYED ON LARGE FIRES FOR SCOUTING AND DELIVERY OF MEN TO REMOTE PLACES ON THE FIRE LINE.

THE "COPTER'S" UNIQUE QUALIFICATIONS ARE EMPLOYED IN SPRAYING HERBICIDES TO IMPROVE NATIONAL FOREST CATTLE AND SHEEP RANGES AND FOR EARLY DETECTION OF INSECT INFESTATIONS WHICH CAN AND HAVE DEVASTATED OUR FOREST.

YOU ARE INVITED TO TOUR OUR BASE.

# 1959 – 1993 Hill City



1959 HELITACK CREW WITH CONTRACT HELICOPTER AND PILOT  
INC. OF DISTRICT OFFICE

# 1994 – Present Custer Co. Airport (KCUT)



# Helitack Program Overview

- 105 MAP ( Mandatory Availability Period) annually
- 7-10 person Helitack Module ( USFS Employees)
- Type 3 Helicopter ( Vendor Operated)
- 2 Helicopter Support Vehicles
- USFS Owned Hangar (Built 1980 for USFS Lead Plane)
- Leased property from Custer County (1980-2030, 50 Year)

# Helitack Missions

- Wildland Firefighting
  - Personnel Transport / Aerial Delivery
  - Water delivery
  - External Cargo
  - Intelligence and Reconnaissance
- Prescribed Fire
  - Aerial Ignition
- Natural Resource Missions
- Search and Rescue



# Helitack Missions Cont'd

Water Delivery



Aerial Ignition



# Statistics on Average

- 8,160 Wildfire Acres Burned Annually (BKF)
- 90 – 100 Initial Attack Fires per Year Locally
- 5-10 Large Fire Support Assignments Nationally

# Statistics for 2018

- 170.6 HRS. Flight Time
- 79,485 Gal. Water Delivered
- 565 Passengers Transported
- 38,099 Lbs. Cargo Delivered



# Rapid City AirTanker Base



# Rapid City AirTanker Base

- Located at Rapid City Regional Airport
- 2 permanent USFS Staff
- Supplemented by Call-When-Needed personnel
  - Aircraft Timekeepers
  - Ramp Manager
  - Parking Tender
- Contracted Mix & Load Crew
- Fully staffed 120 days (minimum) 1 June – 30 Sept annually
- Capable of supporting all Next-Gen Large Air Tankers (LAT) including USAF Modular Airborne Fire Fighting System (MAFFS)

# Rapid City AirTanker Base Cont'd

- Capable of supporting all Next-Gen Large Air Tankers (LAT) including USAF Modular Airborn Fire Fighting System (MAFFS)
- Single Engine Air Tanker (SEAT) loading capability with Variable Frequency Drive (VFD)
- Capable of supporting 6 LATs at any one time
- 180,000 gallons of fire retardant on hand
- Capable of supporting incidents within 300 NM

# Rapid City AirTanker Base Cont'd



Future?



# Questions?

