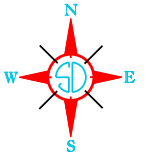
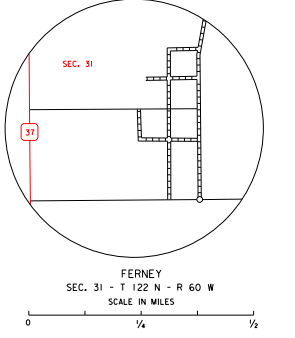
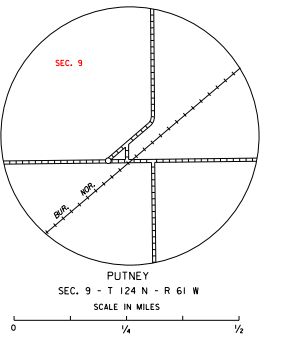
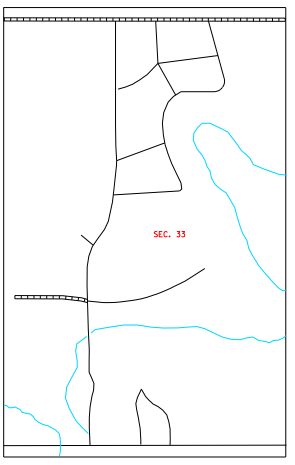


LEGEND

- INTERSTATE HIGHWAY (FULL CONTROL OF ACCESS)
- U.S. NUMBERED HIGHWAY
- STATE NUMBERED HIGHWAY
- FEDERAL AID HIGHWAY SYSTEM
- FEDERAL AID SECONDARY HIGHWAY SYSTEM
- END OF FEDERAL AID DESIGNATED ROUTE
- NARROW STREAM
- WIDE STREAM (INTERMITTENT NAVIGATION)
- DRAINAGE DITCH (MAIN)
- IRRIGATION DITCH (MAIN)
- RESERVOIR, POND OR LAKE
- RESERVOIR, WITH DAM
- DAM
- MARSH OR SWAMP LAND
- DOCK, PIER, OR LANDING
- HIGHWAY BRIDGE (OVER 20 FT. IN LENGTH)
- HIGHWAY BRIDGES CLOSELY SPACED
- STEEL TRUSS BRIDGE (LARGE)
- CANTILEVER BRIDGE
- FORD - ROAD ESTABLISHED
- CONCRETE FORD
- CAUSEWAY
- CATTLE GUARD
- PROMINENT ELEVATION
- STATE LINE
- COUNTY LINE
- CONGRESSIONAL TOWNSHIP LINE
- SECTION LINE
- FEDERAL AND STATE RESERVATION BOUNDARY LINE
- MONUMENT (SMALL)
- OTHER TOWNS AND VILLAGES
- UNINCORPORATED CITY OR VILLAGE
- INCORPORATED CITY OR VILLAGE
- FIGURES INDICATED 1990 POPULATION
- UNIMPROVED ROAD
- GRADED AND DRAINED ROAD
- GRAVEL OR STONE SURFACED ROAD
- HARD SURFACED ROAD
- DIVIDED HIGHWAY (WITH FRONTAGE ROAD)
- INTERCHANGE
- HIGHWAY GRADE SEPARATION
- POINTS BETWEEN WHICH DISTANCES ARE MEASURED INDICATED THUS
- RAILROADS IN JURISDICTION: TWO OR MORE TRACKS OF SEPARATELY OPERATED COMPANIES OR ADJACENT RIGHT-OF-WAY
- RAILROAD CROSSINGS: GRADE CROSSINGS
- RAILROAD ABOVE
- RAILROAD BELOW
- AIRPORT WITH SURFACED RUNWAYS
- MILITARY FIELD
- AIRPORT, COMPLETE FACILITIES (COMMERCIAL OR MUNICIPAL)
- AIRFIELD, LIMITED FACILITIES
- LANDING AREA OR STRIP (INCLUDING PRIVATE AIR FIELDS)
- ARRAY LIGHT BEACON (GENERAL)

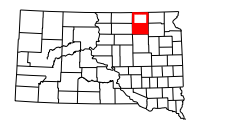


GENERAL HIGHWAY MAP
SOUTH HALF
BROWN COUNTY
SOUTH DAKOTA

prepared by the
SOUTH DAKOTA DEPARTMENT OF TRANSPORTATION
in cooperation with the
U.S. DEPARTMENT OF TRANSPORTATION
FEDERAL HIGHWAY ADMINISTRATION

SCALE
0 1 2 3 4 5 MILES

2021



RESTRICTION OF LIABILITY: The South Dakota Department of Transportation makes no claim, promise or guarantee about the accuracy, completeness or adequacy of the data and expressly disclaims liability for errors and omissions of the data contained in any portion of any data, implied, expressed or otherwise, including but not limited to the warranties of non-infringement of third party rights, title, merchantability and fitness for a particular purpose is given with respect to this data.

